

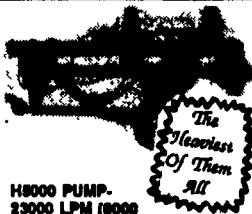
**HUSKY**  
of

**VACUUM TANKERS  
VACUUM LIQUID  
SPREADER**

**FEATURES**

- 6mm tank with dished ends
- New tanker lined inside against rust with special coating
- Fully baffled
- Access hatch

- Level sight gauge
- 210 CFM vacuum pump, larger than normal size
- 6" (150mm) vac hose
- Secondary moisture trap
- Positive float shut off
- Vacuum pump supplied with high heat waxes



H8000 PUMP.  
23000 LPM (8000  
GPM) 20 TONS PER MIN.  
CAN BE CHANGED FROM  
"PUMPING" TO "AGITATING"  
AT FULL SPEED

**HUSKY®  
Liquid  
Manure  
Handling  
Systems**

See Us For All  
Your PARTS &  
SERVICE NEEDS  
Related To Vacuum  
Equipment!

With 2 Full Ports  
1 Rear and 1 Side

**5 YEARS UNCONDITIONAL  
AXLE WARRANTY  
QUALITY BUILT IN**

**HAULING TANKS If You Have A Special**

Truck Or  
Flotation  
Vehicle,  
Husky Can  
Help To  
Make The  
Mounting  
Easy



**WE NOW CAN INSTALL YOUR  
TRUCK MOUNT TANKER WITH  
SPECIAL DRIVE CLUTCH  
SYSTEMS AVAILABLE!**

**BINKLEY & HURST  
BROS. INC.**

133 Rothsville Station Rd.  
Lititz, PA 17543  
(717) 626-4705



**Best Buys In Used Equipment**

**Used Skid Loaders, Backhoe Loader Tractors, Industrial  
Loader Tractors, Crawler Loaders, Excavators and Forklifts**

- |  |   |
|--|---|
| (1) UT2832 Case 1830 Unloader  | (9) UT2834 Kalmar 7800 Lb. Lift Dual Drive Tires, LP Gas, Indoor Type 1990-1991 Model, 46" Wide, 84" Height, Hard Rubber Dual Drive Tires |
| (2) UT2828 John Deere 210C TL Backhoe, Very Good Condition   | (10) Take Your Pick From Good Used Gehl 4610 Diesel Skid Loaders: 44 Perkins, Self-Leveling Loader, 10:00x16.5 Tires, 65" Bucket          |
| (3) UT2831 IH 4500 Forklift Diesel 5000 Lb. Low Hrs.   | (11) UT2815 Gehl 4615 Industrial Diesel 44 HP, Skid Loader With Aux. Hyd., Good Rubber, Lights  |
| (4) UT2840 JCB 930 Forklift 6000 Lb. 4x4, 21 Foot Mast With Cab  | (12) Case 30-4 Diesel Trencher Rubber Tired With D100 Hoe & Dozer Blade   |
| (5) UT2738 Case 580B Diesel Industrial Loader Tractor With Power Shuttle And Partial Cab And Rear Centerweight | (13) UT2808 Case 1840 Diesel Unloader   |
| (6) UT2796 1991 Case 1845C, Only 469 Hrs. With Hyd. Detach Bucket, Quick Coupler, New Rubber, Aux. Hyd.        | (14) UT2718 1984 Case 1835B Diesel Unloader 2300 to 2400 Hrs. With All New Hydraulic Drives (Best Offer)                                  |
| (7) UM2208 Model 35 Backhoe Extensahoe To Fit Case 580C or 580B  |   |
| (8) UM2192 Case 24" Trenching Bucket, Excellent Cond.  |   |

**Good Used Backhoes  
In Stock!**



- Case 580K Phase III Cab, 4x4 Extensahoe
- JD 210C 2WD Tractor Loader Backhoe, Rops, NICE!
- Case 680 w/Cab

**USED MACHINERY SALE**

- |  |  |
|--|--|
| (1) UM2291 7 Foot Heaton Model 1070 Mower Conditioner  | (26) UM2198 New Idea 325 2 Row 30" Picker With 12 Row Husking Bed  |
| (2) UM2264 5 Shank Glencoe Coulter Chisel ..... \$2,895 FOB  | (27) UM2202 M.F. 345 Plow 3 Bottom Auto Reset, Almost New  |
| (3) UM2304 Gehl 1580 Blower, 1000 RPM  | (28) UM2246 Allis Chalmers Model 2500 Transport Wing Disk Harrow 17 Foot Centerfold  |
| (4) H&S 7 + 4 Forage Box, 16 Foot, 3 Beater With Roof On Heavy Duty 12 Ton Tandem Axle Running Gear, Nice!                       | (29) UM2190 New Holland 316 Baler Late Model, Used Only 4 Years, With No. 75 Pan Thrower And Gandy Applicator In Very Good Condition                 |
| (5) UM2305 Gehl 1400 Round Baler 4' Wide 54" Dia., Density Control   | (30) UM2194 IH Model 140 Roll Over Tumble Plow, 4 Bottom 16" Very Good Condition   |
| (6) UM2309 IH Model 47 Baler With Thrower, Nice!   | (31) IH 21x7 Grain Drill, Single Disc, Seed View Cups, In Good Condition, UM1998   |
| (7) UM2301 Used Gehl 309 Scavenger V Spreader  | (32) UM2265 JD Model 215 Dura Cushion 13" Disc   |
| (8) UM2258 Heaton 1085 9 Foot Mower Conditioner With New Guards, Knife & Slip Clutch, Field Ready                                | (33) UM2183 Country Boy Bin On Gear, Like New  |
| (9) UM2267 John Deere 7000 6 Row Planter   | (34) UM2122 John Deere 145 Plow 5 Bottom 16" With New Coulters Last Year   |
| (10) 85 GMC Diesel Forward Mount Truck w/Double Frame & 18 Foot Scott Dump Body w/14 Ton Hoist, Hydraulic Tailgate w/Grain Chute | (35) UM2095 Like New! Case IH Model 710 Front End Loader, Heavy Duty Quick Attach With Self Leveling And 96" Bucket, For Magnum Tractors, Come & See |
| (11) UM2292 New Holland Model 30 Forage Blower 1000 RPM  | (36) UM2131 John Deere 1530 12 Foot Dual Wheeled Transport Disk Harrow, Complete With Cylinder & Hoses   |
| (12) UM2251 13x7 Massey Ferguson Grain Drill Very Good Condition   | (37) UM2167 Zimmerman 3 Axle 9 Ton Trailer In Good Condition   |
| (13) UM2279 Case IH 3 Pt. 60" Finish Mower With Gauge Wheels..... \$875  | (38) UM2142 Sunflower Soil Finisher Like New Model 6211-13, 1 3 Foot With Walking Tandem Transport   |
| (14) UM2282 IH 470 Wing Disk 17" Manual Fold Wings   | (39) UM2261 Krause Model 4900 18" Disc   |
| (15) UM2283 John Deere 7000 Planter, 6 Row 30" w/Liquid Fert   | (40) UM2228 JD 16" Hyd. Fold Field Cultivator  |
| (16) Case IH #14 5 Shank Auto Reset Subsoiler NC 3620  | (41) UM2255 Case IH 8440 Round Baler Like New 5'x5' Hard Core  |
| (17) UM2271 New Holland 316 Baler With Model 70 Belt Thrower   | (42) UM2203 White 508 Semi-Mount 4 Bottom Moldboard Plow, Spring Auto  |
| (18) UM2232 Badger 950 Forage Wagon On 12 Ton Gear   | (43) 2 Row Corn Head Removed From 881 Chopper 30" Used Only 12 Loads..... \$2,495  |
| (19) UM2269 Case IH 600 Blower In A1 Condition   | (44) UM2204 1000 Gallon Top Fill Manure Tanker With Hyd. Gate Valve  |
| (20) UM2268 Gehl Model 95 Grinder Mixer  | (45) UM2234 Case 7 Shank Coulter Chisel Transport  |
| (21) UM2226 Gehl 3038 2 Row Corn Head, Demo.   |  |
| (22) UM2236 Allis Chalmers Pull Type Field Cultivator, Hydraulic Wing Fold, 16 Foot  |  |
| (23) UM2188 Degelman Rock Picker 1 1/2 Cu. Yd. Hopper Semi High Lift   |  |
| (24) UM2222 John Deere FB-B Grain Drill 13x7 With Grass Seeder   |  |
| (25) Schuler Model 175B Feeder Wagon With Scales, Good Condition   |  |

**USED TRACTOR SPECIALS**

- |   |  |
|---|--|
| (1) UT2853 IH 244 Compact Diesel, 24 HP With 60" Woods Belly Mount Finish Mower, Nice!                      | (8) UT2657 Case IH 685 2 Wheel Drive ROPS Tractor, Only 865 Hrs., 2 Speed, P. Shift Trans., 18.4x30 Rear Tires 75% and 10:00x16 Front Tires, Dual Shaft 540-1000 PTO, Very Good, 1 Owner Tractor With 7.9% Financing Available |
| (2) UT2848 John Deere 2640 With Model 48 Loader   | (9) UT2622 IH 186 Hydro C.A.H. Nice With 540-1000 PTO  |
| (3) UT2797 Magnum 7110 MPD, 18 Speed, Power Shift, 145 HP   | (10) UT2835 IH 986 4 Post Rops Tractor   |
| (4) UT2829 Case 870 Cab, Tractor, Power Shift   | (11) UT2782 Case IH 685 With Cab And Air Condition, 62 Rated HP Nice! Low Rate Financing Available   |
| (5) UT2819 Case IH Maxxum 5130 2WD 86 HP Rops, Trans, 16 Speed With Syncro Shift, 18.4x38 Rear Tires        | (12) UT2826 John Deere 4430 Cab Tractor, Nice  |
| (6) UT2795 IH 656 Wide Front Gas Powered With 15.5x38 Rear Tires, 3 Pt. Hitch, Hyd. Outlet, Very Very Nice! | (13) UT2845 IH 504 Wide Front Gas  |
| (7) Case 930 Comfort King Good Amish Power  | (14) UT2842 IH 886 1 Owner, Mint Condition   |

Good Used Heavy  
Duty No-Till Drill  
In Stock



18x7 Lilliston Model  
9680 With Double  
Hoppers, Double Disc  
Openers, Rear Hitch  
w/Hydraulics Included!

FINANCING AVAILABLE  
PRICE REASONABLE

(2) Used Case  
Tractors - Ideal  
PTO & Hydraulic  
Power



- Case 930 Open Rops
- Case 870 F.O.B. As Is

**\$4,600**

Enclosure Can Be  
Removed

**BINKLEY & HURST BROS., INC.**

133 Rothsville Station Rd., Lititz, PA 17543

Located 1/4 Mile North of Rothsville

(717) 626-4705 1-800-IT PAYS U

**BINKLEY & HURST  
BROS. INC.**

133 Rothsville Station Rd.  
Lititz, PA 17543  
(717) 626-4705

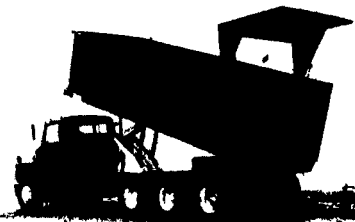
After Hours Emergency Call: (717) 630-0885 (717) 630-5180 (717) 630-8768  
Machinery Sales M-F 7 to 5 Sat. 7 to 11:00 Sun. Closed - Lord's Day



**BUY THE COMPLETE SYSTEM  
FROM BINKLEY & HURST NOW!**

Be Ready For A Fast Speedy Harvest  
To Save Time Plus Get A Special Package  
Pricing If You Purchase All 3 Units From  
Binkley & Hurst Now!

Hi-Lift  
Hydraulic  
End Gate  
Controlled  
From Inside  
Of Cab  
Center  
Mounted  
Grain Trap



Up To  
1000 Cu. Ft.

A-Dump  
Wagon Can  
Replace Up To  
2 Forage Boxes



See Us For All Sizes  
Available

SAVE: • Labor  
• Time • Equipment

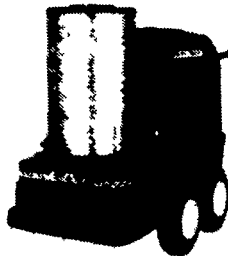
**RICHARDTON**

When Your Truck Reaches The Blower,  
Just Back Into Your Load And Race Away For The Next!

LOOK AT THIS ALL  
NEW STATIONARY  
CONVEYOR  
FEEDER BOX!  
Super Deals For  
The Buyer Who  
Makes A Deal & Takes Delivery Now!



**NOW IS THE TIME  
To Buy A Pressure Washer  
From Binkley & Hurst Bros.**

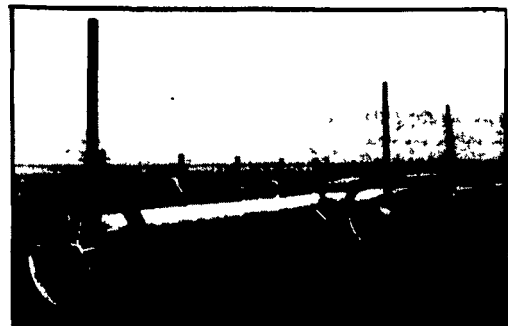


**COME MAKE AN OFFER On Our  
Good Selection Of Trade-In  
Units Serviced & Ready To Go To Work For You.**

**IN STOCK NOW! WEED WIPERS  
ARE THE SAFE WAY  
TO APPLY  
HERBICIDES!**



**WEED WIPER  
CONTACT HERBICIDE  
APPLICATOR**



*Destroys Tall  
Weeds In  
Production  
Fields, Pastures  
And Row Crops...*

**No-Mist  
Application Is  
Healthier For  
The Operator  
And Keeps Your  
Neighbors  
Happy!**