

1987 MACK MS200
with NEW Knapheide 16' Grain
Body Dump, 54" Sides Not Shown,
175 HP, Diesel, 5 Speed, Power
Steering
\$16,900.00
1-800-345-2829

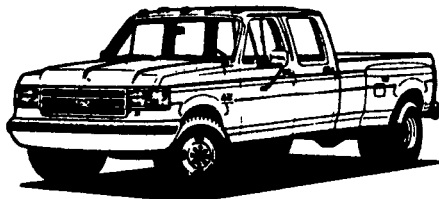


**Z Mack Tandem
Dump Trucks**
1960, B-61, diesel
1963, B-63, 22 in. tires,
power steering, diesel
\$3000. for both.
Telephone Numbers:
Evenings: 410-398-9430
Days: 410-398-9004

FOR SALE

2 - Used 3,500 Lb. Axles And 15"
Rims With 48" Center Of Springs.
\$180⁰⁰
Call Farmer Boy Ag
717-866-7565
Ask For Elvin

'93 FORD CREW CABS



IN STOCK:

- (3) '93 Diesel, Stick
- (3) '93 Turbo Diesel
(In Transit)
- (3) '93 Centurion Diesel, Stick

SHEEHY LEBANON

FORD • MERCURY • LINCOLN
9-9 Daily, 9-5 Saturday Sheehy Hotline (717) 272-7671 or 633-5293
20TH & CUMBERLAND STS - RT 422 WEST

Royal Truck & Equipment Inc.

6910 Route 309 Coopersburg, PA 18036

Just Off I-78, Between
Allentown & Quakertown
Financing Pre-Approved

(215) 282-4090
(800) 283-4090



1982-85 Ford E-350, Enclosed Utilities, 351
V8, AT, PS, PB, 7,000 Wat. Water Cooled
Generator (Built In) Very Clean Tks. Owned &
Maintained by Local Utility Co.



Ford F350 Cab & Chassis 351, V8, 4 Spd.,
PS, PB, 11,000 GVW, Several To Choose
From.....\$3,950 Ea.
With New Stake Body \$4,950



1978 Ford LN7000 18' Stake Dump 3208
Cat, DSL, 5/2 Spd., PS, AB, New PA Inspec-
tion, Ready To Go To Work.



1979 Int 18000, 9' Stake Dump, V8, 4 Spd.,
PS, PB, 19,000 GVW, No CDL License
Required Parks Dept. Owned & Maintained
Since New w/Only 21,000 Original Miles,
Exceptional Must See To Appreciate



1985 IHC 1754 5 Spd. Dia., 14' Stk. or Cab &
Chassis, 22,500 GVW, No CDL Required,
Fleet Maintained, Starting At \$3900.00,
Many To Choose From While They Last
215-282-4090.



1988 GMC 7000 12' Stake Dump w/Utility
Boxes, 6.2L Diesel w/Only 58,000 Miles, 5/2
Spd., PS, 28,000 GVW, Bank Repo, Taking
Offers.

TWO ACRES OF ALL TYPES USED TRUCKS.
"IF WE DON'T HAVE IT, WE'LL GET IT"

**REEDMAN LEASING
2300 CARS-TRUCKS**

*All Cars Below Equipped With
Auto Trans, Air Cond, PB, PS, & Stereo.

*'93 NEW JAGUAR XJ6 SDN \$461.00
Per Month For 36 Months. Closed End Lease.
Stock #92047 & Cyl VIN PC674882 MSRP * \$53,192
Total Of Monthly Payments \$16,596
With \$2900 Down

*'93 NEW CORVETTE CONVERTIBLE
\$450.00
Per Month For 36 Months. Closed End Lease/5tk
#15082 & Cyl VIN P5107073 MSRP * \$44,254 Total Of Mthly
Payments \$16,200 With \$4000 Down

*'93 NEW LINC MARK VIII \$388.00
Per Month For 24 Months. Closed End Lease.
Stock #99554 & Cyl VIN PY884858 MSRP * \$38,147
Total Of Monthly Payments \$9,312.00 With \$3000
Down 11* Per Mile Over 30,000

*'93 NEW LINC TOWN CAR \$377.00
Per Month For 24 Months. Closed End Lease.
Stock #98229 & Cyl VIN PY729600 MSRP * \$35,025
Total Of Monthly Payments \$9,048.00 With \$3000
Down 11* Per Mile Over 30,000 Miles

*'94 NEW LINC CONTINENTAL
\$388.00
Per Month For 24 Months. Closed End Lease.
Stock #99024 & Cyl VIN PY602262 MSRP * \$34,475
Total Of Mthly Payments \$9,512 With \$3000 Down
11* Per Mile Over 30,000 Miles

*'93 NEW CHRYS NY SALON \$237.00
Per Month For 36 Months. Closed End Lease.
Stock #50185 & Cyl VIN PD203933 MSRP * \$20,120
Total Of Mthly Payments \$6,532. With \$2800 Down

*'93 NEW DODGE STEALTH \$265.00
Per Mth For 48 Months. Closed End Lease. Stk #99044
& Cyl VIN PY009793 MSRP * \$21,726 Total Of Mthly
Pymts \$12,720 With \$2000 Down Total Of \$5,000 M

*'93 NEW MERC GRAND MARQUIS
GS \$303.00
Per Month For 24 Months. Closed End Lease.
Stock #91048 & Cyl VIN PX622112 MSRP * \$25,607
Total Of Mthly Payments \$7,272 With \$2500 Down

*'93 NEW MERC SABLE GS \$220.00
Per Month For 24 Months. Closed End Lease.
Stock #94501 & Cyl VIN PA600119 MSRP * \$18,140
Total Of Monthly Payments \$6,280 With \$2000 Down
11* Per Mile Over 30,000 Miles

*'93 NEW PLY VOYAGER \$218.00
Per Month For 36 Months. Closed End Lease. Stock
#78104 & Cyl VIN PR181855 MSRP * \$18,595 Total
Of Monthly Payments \$7,848 With \$1500 Down

**SHOP REEDMAN BEFORE YOU
BUY LEASE OR RE-LEASE A
CAR OR TRUCK**

FLASH! If You Still Have Payments On Your
Present Leased Car Or Truck We Would Like
To Bid On Your Lease For A New Vehicle,
Individual Lease, Or Company Leasing.

*'93 NEW T-10 BLAZER 4x4 4 Dr
\$257.17
Per Month For 48 Months. Closed End Lease Stk/
T-5005 & Cyl VIN P2100977 MSRP * \$20,882 Total Of
Mthly Pymts \$12,344.15 With \$1500 Down Total Of \$5,000 M

*'93 NEW COUGAR XR7 \$279.39
Per Month For 24 Months. Closed End Lease. Stock
#93510 & Cyl VIN PH02930 MSRP * \$18,595 Total
Of Mthly Payments \$6,705.39 With \$1500 Down

*'93 NEW CHEV LUMINA 4 DR
\$176.51
Per Month For 36 Months. Closed End Lease.
Stock #35301 & Cyl VIN P919842 MSRP * \$18,595
Total Of Mthly Payments \$6,354.39 With \$2000 Down

*'93 NEW OLDS CUTLASS SUPREME
S CPE \$273.00
Per Month For 36 Months. Closed End Lease.
Stock #92088 & Cyl VIN PD345817 MSRP * \$19,020
Total Of Mthly Pymts \$9,828.00 With \$2000 Down

Closed End Leases
First Monthly Payment Plus A Security Deposit
Equal To One Monthly Payment Is Required Upon
Delivery. Lessee May Have The Option To Purchase
The Car At Lease End At A Price To Be Negotiated
With The Dealer At Lease Inception. At The End Of
The Lease If You Do Not Exercise Your Option To
Buy You Will Pay A Mileage Charge Of 10* Per Mile
For Each Mile In Excess Of 15,000 Miles Per Year
Plus The Costs Of Any Excess Wear Or Tear.

* Price Includes All Cost To Be
Paid By A Consumer, Except For
Licensing Costs, Registration
Fees & Taxes.

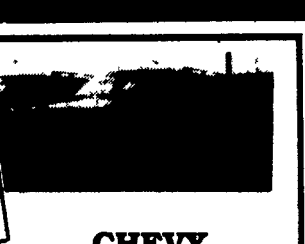
CALL 215-757-4661
Ask For Reedman Leasing Dept.
Reedman Rte 1 Langhorne Pa.

**CENTRAL
PA'S
LARGEST
GM
DEALER!**

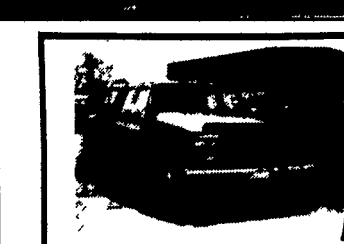
**Frederick
THE TRUCK PLACE**

**OVER
200 NEW AND
USED TRUCKS
IN STOCK!**

SOLD
'84 GMC CREW CAB
Dual Rear Wheels, High Sierra,
1 Ton, Low Mileage



**CHEVY
SUBURBANS**
5 New & Used To
Choose From
2WD & 4WD Available



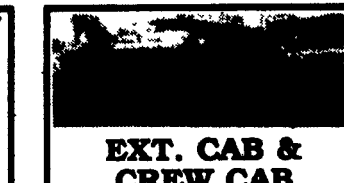
**'89 CHEV CREW
CAB**
Dual Rear Wheels,
Silverado, 1 Ton

'91 GMC CONVERSION VAN
13 Pass, Extra High Top, Front & Rear
Air, Frederick Owned, Only 335 Miles,
Ideal For Wheelchair Lift

'92 GMC 3500 SL
1 Ton Dump, 6,200 Mi., 350, AT



**CONVERSION
VANS**
15 To Choose From!
Hi-Tops & Low Tops Available



**EXT. CAB &
CREW CAB
DUALY'S**
Centurion Conversions &
Silverados In Stock 7 To
Choose From! 2WD & 4WD
Gas & Diesel (2) '92 Leftovers
In Stock!

'93 CHEVY 3500
1 TON SINGLE
WHEEL CREW CAB
6.5 L Diesel Engine

'93 CHEVY COUNTRY COACH
Pick-up Trucks, 2 & 4 WD, Reg.
Cab & Extend Cab, 11 to
Choose From

'91 CHEV 70 SERIES
TRUCK 2 Speed, Rear,
Low Miles.

**IF WE DON'T
HAVE IT,
WE'LL
LOCATE IT!**

**Frederick
The SUPERMARKET OF TRUCKS**

1505 Quentin Rd.
Rt. 72 - Lebanon
SALES HOURS:
Mon.-Fri. 9-9
Sat. 9-5

(717) 274-1461 • PA (800) 222-5523