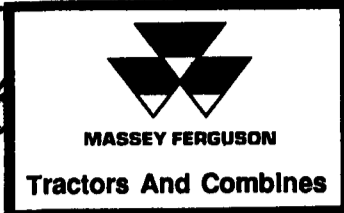


SINCE 1936

M.M. WEAVER & SONS, INC.

Lancaster Farming.
Saturday, June 26, 1993-D19



Leola, PA 17540 Phone: (717) 656-2321

Located: 4 miles West of New Holland on Rt. 23, 1 1/2 miles Northeast of Leola on the No. Groffdale Rd., 1 mile on the right, opposite Groffdale Mennonite Church.



LATE MODEL MF USED COMBINES

1986 MF 860 With 9115 Floating Grain Head & 1163 Corn Head, 2400 Hrs.	\$52,000
1983 MF 860 With 9115 Floating Grain Head & MF 1163 Corn Head, 2800 Hrs.	\$32,000
1982 MF 860 With 9115 Floating Grain Head & MF 1163 Corn Head, 2860 Hrs.	\$34,000
1982 MF 850 With 9113 Floating Grain Head & MF 1163 Corn Head, 4680 Hrs.	\$25,000

USED TRACTORS

MF 3660-4, 140 HP, 814 Hrs.	\$52,000
MF 3525-2, 110 HP, 2882 Hrs.	\$18,500
MF 2745-2, 143 HP, 2583 Hrs.	\$12,000
MF 374-4 With Loader, 57 HP, 735 Hrs.	\$21,000
MF 1085, 82 HP, 3568 Hrs.	\$8,500
MF 1085, 82 HP, 3980 Hrs.	\$7,500
MF 1080, 82 HP, 5516 Hrs.	\$5,000
MF 1020-4, 21 HP, 224 Hrs.	\$5,500
MF 1030-2, 26 HP, 232 Hrs.	\$6,700
MF 1035-2, 31 HP, 185 Hrs.	\$7,800
MF 1045-2, 35 HP, 262 Hrs.	\$7,900
MF 40 With Loader, 3170 Hrs.	\$4,700
MF 30E With Loader, 668 Hrs.	\$19,500
MF Loader Backhoe, 2956 Hrs.	\$8,500
MF 35 With Loader.	\$4,500
IH 350 Tractor, 42 HP	\$2,500
Ford 9N Tractor.	\$1,500

SPRAYER EQUIPMENT

Demco Sprayer 45' Boom, Hydraulic Drive, Centrifugal Pump, Foam Marker, 3 Yrs. Old

HAY EQUIPMENT

MF 128 Baler	\$2,200
Demo MF 228 Baler With Thrower	\$11,000
Demo Vicon 1511E 5x6 Round Baler	\$9,900
Demo MF 5 Big Square Baler	\$36,000
Used Vicon 1211 E 4x5 Round Baler	\$6,500
Demo Vicon 321 Disc Mower Conditioner	\$12,500
Demo Vicon 216 7 Ft. Disc Mower	\$3,900
Lucknow Tub Grinder	\$5,900
Teagle Bale Shredder	\$1,900
Vicon RS740 Tedder 24 Ft.	\$4,500
6 Like New 8x24 Ft. Flat Wagons	@ \$1,200
NH 851 Round Baler	\$4,250
NH 489 Haybine	\$3,900
Hesston 1014 Hydra Swing	\$1,750

PLOWS & TILLAGE

JD 10 Ft. Disc	\$800
Glenco 7 Tooth Soil Saver	\$5,900
M&W 5 Tooth V-Ripper	\$5,700
Vicon 18 Ft. Field Cultivator	\$6,900
MF 2-16 Spring Trip 3 Pt. Plow	\$650
Dunham 14 Ft. Cultipacker	\$1,875
Yetter 3 Pt. Rotary Hoe	\$2,695
Buffalo 6 Row Cultivator-Ridge-Till, Like New	\$7,900
Pequea 6 Row Cultivator	\$2,100

MANURE & FEED MIXER EQUIPMENT

NH 795 Tandem Axle Spreader	\$4,900
NH 791 Tandem Axle Spreader	\$2,400
NI 244 Tandem Axle Spreader	\$1,900
Knight Little Auggie Mixer w/Scale	\$3,900
Knight Big Auggie Mixer w/Scale	

ROTARY CUTTERS & EQUIPMENT

Hincker Brady 12 Ft. 1000 RPM Shredder	\$5,500
Woods 60 HP Rated 8 Ft. 3 Pt. Blade	\$650
Low Cost 7 Ft. 3 Pt. Blade	\$305
Sweepster 3 Pt. 6 Ft. Rotary Broom	\$700
Myers Front Tractor Mtd. Snow Blade	\$1,250
Brady 7 Ft. Flail Chopper	\$2,500
Danuser 3 Pt. Post Hole Digger	\$680
Shaver 3 Pt. Hydraulic Post Drive	\$2,500
Brady 12 Ft. Flail Shredder	\$5,500

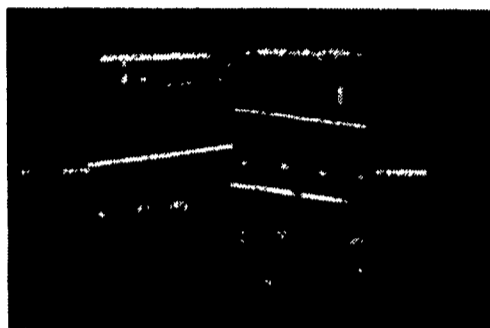
THE CLAAS HARVESTER



MAXIMUM FEED QUALITY

To ensure maximum feed quality from maize it is vital to crack every kernel. Digestion of uncracked maize falls as the maize becomes drier. Independent trials have shown the Claas corn cracker to be close to 100% effective. From the cylinder the corn passes through the two large diameter rollers with saw tooth profiles. The rollers run at different speeds to intensify the grinding effect and open up each kernel. It is a fairly tough process so the latest generation of corn crackers take account of the wear involved on the rollers. Nothing can reduce the wear but Claas have cut the cost of repair by making the outer sleeve replaceable. The shaft, drive pulley and bearings can all be reused which cuts down repair bills dramatically. Adjusting the distance between the two rollers is accomplished by turning two handles, easily accessible behind the cab. In no time at all the degree of cracking can be matched to the ripeness of the crop.

Call Today For The Custom Harvester
In Your Area Equipped With A
Claas Harvester And Roller Mill



RELIABILITY

The CLAAS Cutterbox is a unique balanced design using 2 knives in a V configuration. This forces the cutting action toward the center instead of the outside. This is the secret of their horsepower requirement and good quality of cut.



CLAAS HARVESTER DAY
Coming Tuesday, July 13, 1993 - More Details
To Come Later - Watch Our Ad!



CLAAS STEEL ROLL ROUND BALER

The Ultimate In Wet Hay Baling

- Ideal in Straw and Dry Hay
- Roliant 46 and 66 can net wrap a bale in 10 seconds.
- Rugged steel roller, fixed chamber design
- Extremely reliable - low warranty claims

COMING THIS MONTH:

ROTO-CUT SILAGE BALER

The Pickup on this baler cuts hay into 6-12" lengths. Now you can feed hi-moisture round bales with a fork or mix these bales in a TMR Mixer without a Grinder!

CALL FOR A DEMONSTRATION!

Kverneland

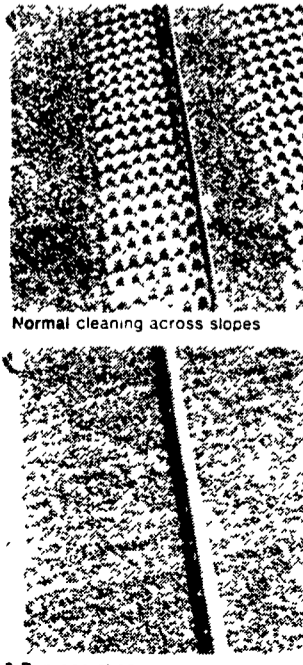
BALE WRAPPERS

TOP-AIR
MANUFACTURING INC
SPRAYERS

Yetter
ROTARY HOES

WOODS
MOWERS

COMBINING SLOPES — THE MF 3-D CLEANING SYSTEM



With the MF 3-D cleaning system, the crop is distributed evenly across the full width of the sieves, performance remains stable and output maintained.

The 3-D cleaning system provides dynamic slope compensation which means that the upper sieve moves sideways against the slope of the hill. The degree and direction of these movements depend on the inclination of the slope. Quick reaction and of course equal performance in any direction on slopes of up to 20%.

With the MF 3-D system you can operate at the same speed on slopes as on flat land. Daily performance can be maintained.

3-D in operation