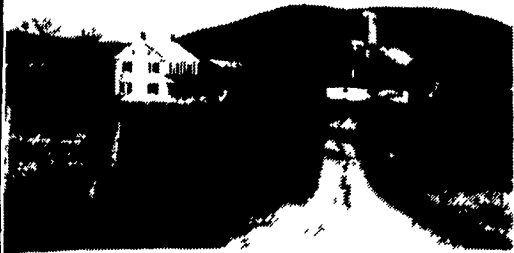


CUMBERLAND COUNTY FARMS



97 Acre Working Dairy Farm. Bank barn, dairy barn with 30 tie stalls, pipeline, bulk tank, silos, and 200 hd. hog building. Renovated 4 bedroom house and 2 streams on property. Price Reduced.

135 A. Beef Cattle or Horse Farm. Colonial brick 4 bedroom home with large spring fed pond.



Stewart Real Estate
Ask for Mark Bucher Office 717-245-9393 or Evenings 717-776-3073

An Independently Owned and Operated Member of the Prudential Real Estate Affiliates, Inc.

FOR SALE BY OWNER

145 acre working dairy farm, 60 tie stall barn w/Patz gutter cleaner, 8 box stalls, 8 calf stalls, 20x64 silo w/Patz unloader, various additional outside sheds, 3 BR ranch home w/attached garage. 70 acres tillable, balance pasture and wooded, pond, additional land available to buy or lease. Farm machinery available at extra cost. Easily converted to beef or horse farm. 20 miles North of Bloomsburg, PA in Luzerne Co.

717-864-2215

SANFORD G. LEAMAN, REALTOR/AUCTIONEER
1 (800) 836-8113

BRADFORD COUNTY, PA: 100 acre beef farm w/ modern 318x60' slated floor, 115,000 cu yd manure pit, 11 pens, electronic scales, loading chutes, grain bins Call Sandy Leaman for all the details. This building is only 1 1/2 years old. **Reduced \$100,000.**
LANCASTER COUNTY 45 or 60 acre farm in Manheim area with like new barn, old log house needing restoration plus a modular home, stream, woods, great horse or Amish farm Call Sanford Leaman for price and location

Call Sandy Leaman to List Your Farm. We Have Many Buyers Waiting For Just The Right Place and Yours May Fit The Bill.

We Are Working On Several Nice Dairy Farms Listings in Tioga, Bradford County Area. Call For Strict Confidential Information.

MODERN OPERATING SYSTEM FACILITY

Excellent Opportunity for a progressive and ambitious dairy family on new dairy facilities, 2 to 5 years old on 11 acres, designed for cow comfort and labor efficiency.

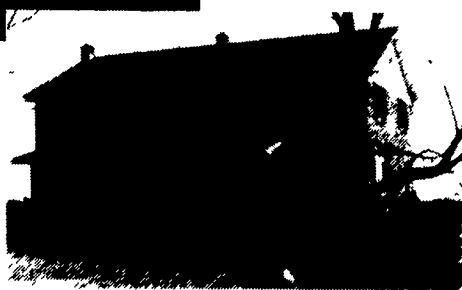
118 freestall barn, cow pillows, adjustable side curtains, stainless steel Herringbone milking parlor, 14 Bou-Matic milkers (10 automatic take-offs) 1000 gallon Mueller milk tank, office and utility room, large feeding room w/ Risler TMR stationary mixer, 20x80 Ribstone silo, Jamesway unloader, 2 grain bins, Patz belt conveyor feed system, ASCS approved manure lagoon (1 year storage). Dry cow/heifer barn 50x160, large yard, mobile home, septic tank, deep well, beautiful view, and location for new home. Located in Lawrence County, PA. Mohawk Schools.

Dairy operation for sale \$290,000 due to death of operator.

412-667-0452

260 Jersey herd and machinery also for sale. 250 acres crop and pasture land for rent or sale. (Negotiable) Older dairy barn, silo and house available to lease adjacent to new facility.

CUMBERLAND COUNTY 2 FARMS - PERFECT FOR HOG OR POULTRY CONFINEMENT



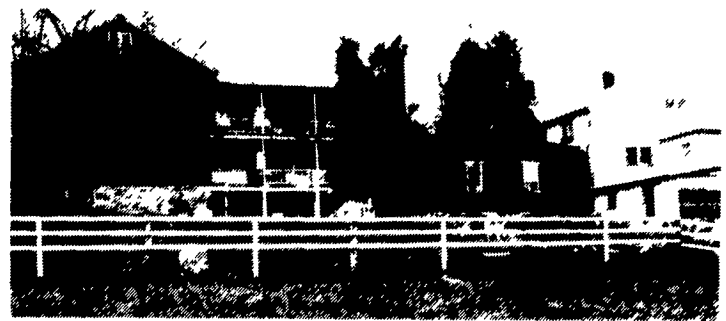
151 Acres- 130 T.A., 20 pasture, 1 wooded, high state of cultivation, gently rolling - shady loam soils, 54x120 equipment shed, bank barn w/40 cow barn attached, 16x60 & 12x50 silos, 4000 bu. grain bin w/drying fan, stream & pond in pasture, 5 large BR dwelling, approx. 13 yrs. old-modern kitchen 2 baths.



152 Acres- 155 T.A., 25 pasture, 10 wooded, slightly rolling, dairy barn w/40 comfort stalls, 25 free stalls w/pipeline & barn cleaner. New equip. shed - 36x64, 16x60 & 12x40 silos, 2 1/2 story frame dwelling, 5 BR, 1 1/2 bath, modern kitchen & bath.

Negotiable Possession On Both Farms

BEDFORD CO.



• Near New Enterprise, Pa. 160+ Ac. Dairy Farm w/130 free stalls & milking parlor - 4 silos, very nice limestone soil - equip. shed & garage. Dwelling = 13 rm brick - kit = 14'x27' & L.R = 17'x33' - 2 baths & 2nd kit. 2nd Dwelling = 3 BR brick & frame Nice stream in pasture!! Call for fast personal service!!

MAHLON OBERHOLTZER AGENCY

Your Central PA Farm Broker
Smoketown, PA 17576 (Lanc. Co.)
717-392-1177

Lancaster County Farms

• **Hunting & Fishing in Bedford & Somerset Counties** - This 123 acre farm is a sportsman's dream. 5 bedroom house, 1 bath - barn, summer house, spring house and milk house. 2 ponds, 3 streams. All this for only \$100,000.00. Call Sandy 717-442-4415.

• **Rare property...** 10 acre horse farm with elegant restored brick Georgian home in beautiful condition. Wide plank floors, large covered deck & screened porch. Large triple decker bank barn w/6 box stalls. Pond filled w/bass, fenced pasture, great riding trails. Plenty of storage for hay & tack room.

Produce - Vegetable and horse farm. 29 acre farmette - 20 tillable and 9 pasture, 2 story house with modern kitchen and bath. Barn and 2 car garage. Call Joanne @ 717-786-2440.

Land

• **30 Acres Manheim Twp.** - zoned residential, great location, lots of potential.

• **40 Acres Colerain Twp.** - zoned residential, lovely setting, close to major roads, privacy.

• **63 Acres Fulton Twp.** - great location overlooking river, mostly farmland, private.

Other farms available please call for details.

Specializing in Farm & Investment Real Estate

Century 21 Wagner-Hatton & Associates

Investment properties - Tax exchange opportunities for any buyer or seller
Ken Rutt Farm Specialist Ray Stoltzfus
717/786-3591 (H) 717/786-1300 (O) 717/548-3785 (H)



OTHER FARMS AVAILABLE

Please Call and Tell Us Your Preference

PAUL M. LONGACRE

REAL ESTATE BROKER

Rt. 100 Hereford, PA 18056

Ph: 215-679-5919

Paul Zelsloft, R.E.S. (717) 437-2305

TIoga COUNTY

• 182 acres m/l dairy farm, 53 tie stalls with 2- 16x55 concrete stave silos, shop 30x30, horse barn 30x52, 2 1/2 " S.S. pipeline milkers, 500 gal. bulk tank, bull pen, heifer barn. 2 story frame house with aluminum siding, "big" modern farm kitchen with solid oak cabinets, LR, DR, laundry, office, wall to wall carpet throughout, 3 BR, 2 full baths, plus attic, \$200,000. Cattle, Machinery At Extra Cost.

BRADFORD COUNTY

• 116 Acres Dairy Farm, Approx. 80 Tillable, Rest Pasture, Lg. 2 Story Frame House, Modern Family Kitchen, Lg. LR, Family Room, 2 Baths, 8 BR, Laundry, W/W Carpet, Lg. Dairy Barn With Double High Trashing Floor With 1 Story Addition, 70 Tie Stalls, Pipeline Milker With Lg. Bulk Tank, 3 Silos, Harvestore Grain Silo, Lg. 4 Bay Garage 36x60 Metal, \$225,000.

• 120 Acres, 65 Tillable M/L, Pasture 40 Acres, Remainder Wooded. Containing 3 Houses, (1) 2 Story, 8 Room, 1 1/2 Baths, w/Attached Garage, (1) 1 1/2 Story, 7 Room, 2 Car Detached Garage, (1) 1 Story, 3 Br., Bath, Detached Garage. 44 Stall Cow Barn, Milk House, Pipeline Milker. All Modern Conveniences. 2 Concrete Silos. Asking \$250,000. Can Be Subdivided.

UPPER MONTGOMERY COUNTY

• 80 Acre Mill/Farm w/Road Frontage, Features 76,000 Bushel Storage Grain Elevator, Dryer, Tractor And Trailer Scale, Mill And Large Heavy Storage Barns. Stone Double Farmhouse, \$625,000.

BERKS COUNTY

Bally, Commercial Property, 4 Apartments, Paved Lot, 12,000 Sq. Ft. Parking Space, 2 Story Block, Stucco And Frame Building, Video Store On 1st Floor. 1st Floor, 2BR, LR, Modern Kitchen Apartment. 2nd Floor, 2 Apartments, 1BR, LR, Modern Kitchen. Basement Houses Commercial Washer/Dryer, Plenty Of Storage Space. Very Good Income Producing Property For Only.....\$225,000 Or \$190,000 Without Video Equipment.

BEDFORD COUNTY

• 186 Acres M/L, 105 Tillable, 15 Acres Pastureland, 40 Acres Woodland, Gently Rolling Ground. 2 Houses, #1- 2-Story 4 Bedroom, Modern Eat-In Kitchen, Living Room, Dining Room, Full Basement; #2- 1-Story, Full Basement, Patwell House, 3 Bedrooms, Modern Kitchen, Dining Room, Living Room, Breezeway. 80 Cow Free Stall Barn, 120' Long x 45' Wide, 50x60 Barn w/28 Stanchion, Universal Pipeline w/6 Milkers, Automatic Washer, 1000 Gal. Mojonier Bulk Tank. 3 Silos: 20x68 Poured Concrete w/Jamesway Unloader, 16x50 Stave Silo w/Acorn Unloader, 12x40 Concrete Stave Silo. 14x20 Garage And Workshop, Grain Storage & Double Corn Crib, 2 Car Garage Below. Add'l. Oversize 2 Car Garage. \$255,000.

MONTGOMERY COUNTY (Between Washingtonville & Danville)

• 133A m/l a prestigious estate farm has everything to offer. Location, privacy, a lg. frame 4 br. house w/2 full baths, modern kitchen and dining combination, den, LR w/fireplace, picture window overlooking 3 acre pond, 100 tillable acres, large bank barn equipped for beef & hog, large pole shed for equipment, located in good farming area. Shown by appointment only. Contact Paul Zelsloft, 717-437-2305.