

Our 52nd Year
INTERNATIONAL TRUCKS
Sales • Service • Parts
IVECO
Parts, Service & Warranty

CENTRAL GARAGE INC.
S. 2nd St., Womelsdorf, Pa. 19567
215-589-4581

TRUCKS
Sales • Service • Parts
Cummins Service • Parts

SALES - LEASING
STATE INSPECTION
ASE Certified Mechanics!

REPAIRS -
All Make Trucks
And Cars

NEW TRUCKS

1994 International 4700.....	29,000 GVW
1993 International 4900.....	33,000 GVW
1993 Nissan UD 2600.....	26,000 GVW
1993 Nissan UD 1800.....	SOLD 17,000 GVW
1993 Nissan UD 1300, 5 Speed.....	13,000 GVW

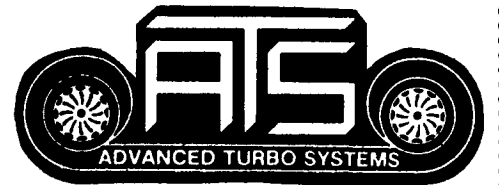
USED TRUCKS

1977 International 1850.....	30,000 GVW
1976 International Fleetstar, Automatic.....	SOLD 35,000 GVW
1978 International Loadstar.....	19,200 GVW
1988 International Model 1954.....	32,800 GVW
1989 International Model 1954.....	32,800 GVW
1989 International F9370 Tractor.....	With Sleeper
1985 Ford F350 w/Dump.....	10,000 GVW
1992 Nissan UD1800 with 16 ft. Reefer Body (Repo).....	17,000 GVW

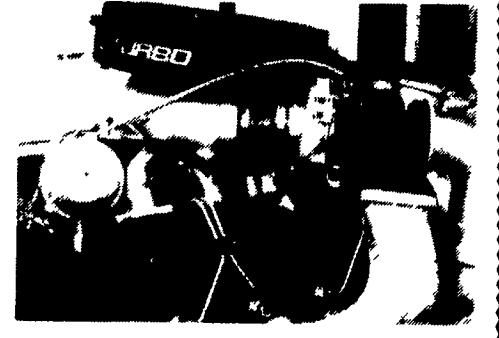
PRE-OWNED CARS & TRUCKS
1991 Dodge Caravan - \$14,500 1979 Jeep - Mechanic's Special!
1986 Olds Firenza Wgn. - \$2,395

ASSORTED NEW AND USED TRUCK BODIES FOR SALE!
• Van Bodies, 14 Ft. To 24 Ft. • Heavy Duty Winch •

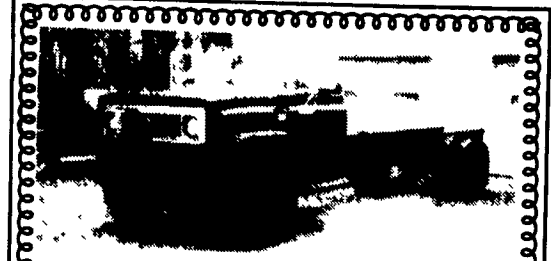
SERVICING • TOWING • TUNE UPS • INSPECTION
FUEL ADDITIVES • ENGINE REBUILDING
• MACHINE SHOP
PARKVIEW GARAGE, INC.
AMERICAN & FOREIGN DIESEL SPECIALIST
A.T.S. TURBO SYSTEMS
39 PARKVIEW HGTS. RD. EPHRATA, PA 17522
P.O. Box 246 Ph. (717) 733-9691



Have Your 6.2, 6.9 & 7.3 Diesel Engine
Turboized Before The Busy Season
Call Us & Ask About The New
Wastegated Turbo For The 7.3 Engine



Rogers Lo-Boy
Good Tires & Deck, Recent Paint
& Brakes. Must Go - Quit Farming
& Sold Tractor
\$1500
717-764-8301



1988 Chevy C70
Cab & Chassis, 366, 5 Speed, PS,
PB, 23,300 GVW,
65,000 Original Miles, Red.
\$6,900.00
717-733-2873

JONES
PONTIAC • HONDA
GMC TRUCK
1335 Manheim Pike, Lancaster
394-0711

JONES BEST BUY USED TRUCKS

<p>'88 CHEVY CREW CAB Stake Body, Pwr. Lift Gate, AT, AC, V8 #7550 Was \$12,900 SALE \$9,400</p>	<p>'89 CHEVY SUBURBAN 4x4 Silverado, 350, AT, AC, Clean #7586 Was \$16,900 SALE \$14,800</p>	<p>'89 GMC C1500 PICKUP AT, V8, High Sierra #7592 Was \$9,995 SALE \$8,100</p>	<p>DIESEL</p> <p>'87 GMC 3/4 TON PICKUP 4x4 6.2 Diesel, 4 Spd., Snow Plow, AC, #7561 Was \$8,995 SALE \$7,350</p>
<p>'87 CHEVY SUBURBAN 3/4 4x4 Silverado, 350, AT, AC, Trailer Pack, #7580 Was \$12,900 SALE \$9,900</p>	<p>'92 CHEVY 3/4 TON PICKUP 350, AT, AC, Silverado 2500 Miles #7541 Was \$17,900 SALE \$15,900</p>	<p>'88 CHEVY S-10 EXT. CAB 4x4 V6, AT, AC, Black, Clean, #7488 Was \$11,995 NOW \$9,700</p>	<p>DIESEL</p> <p>'84 CHEVY SILVERADO 47,000 Mi., AT, AC, Clean #7513 Was \$8,495 NOW \$6,300</p>
<p>'89 CHEVY S10 4x4 V6, Tahoe, AC, 5 Spd., 50,000 Miles #7540 Was \$9,995 SALE \$8,400</p>	<p>'78 DODGE CUBE VAN New Paint, AT, V8 #7563 Was \$3,995 SALE \$1,975</p>	<p>'91 FORD EXPLORER 4 Door, XLT, AT, AC #7539 Was \$16,995 SALE \$14,900</p>	<p>DIESEL</p> <p>'92 CHEVY 3/4 TON PICKUP Silverado, 6.2 Diesel, AT, AC, 11,000 Miles #7569 Was \$17,900 SALE \$15,900</p>
<p>'84 CHEVY 3/4 4x4 350, AT, 8600 GVW, 58,000 Miles (File Photo) #7547 Was \$8,900 SALE \$6,750</p>	<p>'89 CHEVY 3/4 4x4 PICKUP 350, AT, AC, #7536 Was \$11,995 SALE \$10,200</p>	<p>'86 CHEVY C30 DUALY 454, 4 Spd., Great Shape #7587 Was \$8,995 SALE \$5,975</p>	<p>DIESEL</p> <p>'87 CHEVY 3/4 4x4 Only 14,000 Miles, 6.2 Diesel, 4 Spd., Factory Vehicle #7314 Was \$13,900 SALE \$11,050</p>
<p>'92 GMC EXT. CAB 1 TON DUALY 454, AT, AC, 18,000 Mi., #7475 New Was \$27,500 NOW \$18,100</p>	<p>'90 CHEVY XCAB PICKUP Long Bed, Silverado, V8, AT, AC #7574 Was \$14,900 SALE \$13,700</p>	<p>'89 JEEP COMMANCHE 4 Spd., 4 Cyl. #7452 Was \$6,995 SALE \$4,700</p>	<p>'87 CHEVY 3/4 4x4 PICKUP 350, AT, 8600 GVW, 56,000 Miles #7575 Was \$9,995 SALE \$7,750</p>

Prices based on straight sale, Tax & Tags extra. Trades accepted at actual cash value
Must present this ad at time of purchase for sale price.

Trailer Hitches
Brake Controllers
Pintle Hooks
and Much More!
• Free Catalog •
Free UPS/Credit Cards
Weaver Distributing
1-800-Weaver-D

MOTORS
New & Rebuilt
350, 366,
427, 454
6.2 Diesels
• Rebuilt & Used
Will Install
Roll Back Service
(at cost)
717-762-6415

1988 Ford L9000
w/Muv-all 43'
trailer w/hydraulic
ramp, 80,000
GVW, 250,000
miles
\$42,500
Call
Hertz
Equipment
Rental
(215) 391-1890
ask for Tom Burleigh

E-TOWN DODGE
1991 Dodge Dakota
25K, 318 V8,
Red & Silver LE
1984 Chevy
Suburban, Auto
Air, 454 Eng.
(4) 4 More Coming
In 1993 Diesels
In Stock Club
Cab, Dual
Wheels &
Regular Cab,
5 Speed &
Automatic,
2 WD & 4 WD.
CALL
MILTON HESS
Certified Truck Specialist
717-367-6644
717-653-6667
Elizabethtown, PA