

- 1992 Chevy Beauville 8 Pass., 6.2 Diesel, AT, Loaded, Black/Gray 15,900 Mi.....\$17,900
- 1992 Ford Aerostar XL Ext., 7 Pass., V6, AT, Loaded, Green, 62,800 Mi.....\$12,800
- 1989 Dodge Ram 100 V8, AT, AC, AM-FM Cass., Tan/White, 39,000 Mi.....\$7,900
- 1989 Pontiac Grand Prix V6, 5 Spd., Loaded, Maroon/Gray, 60,400 Mi.....\$7,400
- 1988 Olds Cutlass Supreme, V6, AT, Loaded, Black, 56,600 Mi.....\$6,900
- 1988 Chevy Astro CS, 8 Pass., V6, AT, AC, Tilt, AM-FM Cass., Gray/Silver, 52,800 Mi.....\$7,900
- 1988 Honda Accord LX 4 Cyl., 5 Spd., Loaded, Tan, 58,700 Mi.....\$7,900
- 1988 Dodge Shadow 2 Dr., 4 Cyl., AT, AC, Sunroof, AM-FM Cass., Black, 58,000 Mi.....\$4,800
- 1988 Buick Skyhawk 4 Cyl., AT, AC, CR, Tilt, AM-FM Cass., Red, 71,000 Mi.....\$3,900
- 1986 Chevy 30 Panel Van, V8, AT, AC, AM-FM, Gray, 67,500 Mi.....\$4,800
- 1986 Chevy S10 Blazer 4x4, 4 Cyl., 4 Spd., AM-FM, Gray, 92,400 Mi.....\$3,900

Brubaker's Auto Sales
Myerstown, PA
717-866-5237

Huntingdon Equipment

Rentals Available **GOOD USED EQUIPMENT**

Huntingdon Valley, PA • 215-672-9667 • 1-800-543-3833 • Eddle



20 Ton P&H Crane 3 Sec. Hyd. Boom mounted on a 1968 F.W.D. both engine gas (new front 89), fleet maintenance.



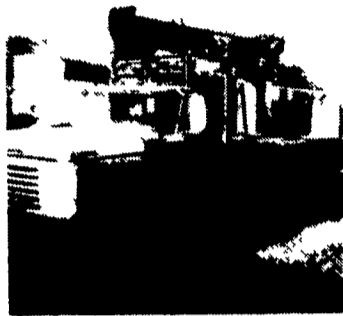
1985 F-600 8.2 Diesel, Auto, 5 Man Cab, Utility With Rollup Door On Rear, Clean, Low Mileage, 1 of 3.



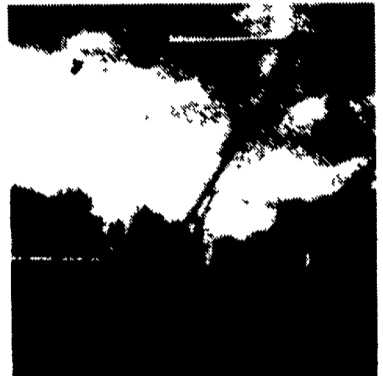
Buses - Two Fords and Three Internationals \$500.00 Per Unit. While they last.



Holan 70' Double Bucket 75' working height mounted on 1981 Western Standard, 6x6 Flatbed, CAT 3208, Auto.



Need a Lift? We Have A Large Selection Of Boom Trucks Up To 14,000 lbs. Cap. Some With Post Diggers.



Bucket Trucks 28' to 65' Gas and Diesel. Call For Details.

DIGGER DERRICKS/AERIAL BUCKETS/UTILITY EQUIPMENT

REEDMAN LEASING 2300 CARS-TRUCKS

*All Cars Below Equipped With Auto Trans, Air Cond, PB, PS, & Stereo.

*'93 NEW JAGUAR XJ6 SDN \$461.00
Per Month For 36 Months. Closed End Lease.
Stock #92047 6 Cyl VIN PC674892 MSRP * \$53,192
Total Of Monthly Payments \$16,596
With \$2800 Down

*'93 NEW CORVETTE CONVERTIBLE \$450.00
Per Month For 36 Months. Closed End Lease Stk #15062 8 Cyl VIN P5107073 MSRP * \$44,254 Total Of Mthly Payments \$16,200 With \$4000 Down

*'93 NEW LINC MARK VIII \$388.00
Per Month For 24 Months. Closed End Lease. Stock #99554 6 Cyl VIN PY884858 MSRP * \$38,147
Total Of Monthly Payments \$9,312.00 With \$3000 Down 11* Per Mile Over 30,000

*'93 NEW LINC TOWN CAR \$377.00
Per Month For 24 Months. Closed End Lease. Stock #98229 6 Cyl VIN PY728600 MSRP * \$35,025
Total Of Monthly Payments \$9,048.00 With \$3000 Down 11* Per Mile Over 30,000 Miles

*'94 NEW LINC CONTINENTAL \$388.00
Per Month For 24 Months. Closed End Lease. Stock #99024 6 Cyl VIN PY605262 MSRP * \$34,475
Total Of Mthly Payments \$9312 With \$3000 Down 11* Per Mile Over 30,000 Miles

*'93 NEW CHRYS NY SALON \$199.00
Per Month For 36 Months. Closed End Lease. Stock #50185 6 Cyl VIN PD203933 MSRP * \$20,120
Total Of Mthly Payments \$7164. With \$2800 Down

*'93 NEW DODGE STEALTH \$265.00
Per Mth For 48 Months. Closed End Lease. Stk #88044 6 Cyl VIN PY09793 MSRP * \$21,720 Total Of Mthly Pymts \$12,720 With \$2000 Down Total Of 55,000 MI

*'93 NEW MERC GRAND MARQUIS GS \$303.00
Per Month For 24 Months. Closed End Lease. Stock #91046 6 Cyl VIN PX622112 MSRP * \$23,607
Total Of Mthly Payments \$7272 With \$2500 Down

*'93 NEW MERC SABLE GS \$220.00
Per Month For 24 Months. Closed End Lease. Stock #94501 6 Cyl VIN PA600119 MSRP * \$18,140
Total Of Monthly Payments \$5280 With \$2000 Down 11* Per Mile Over 30,000 Miles

*'93 NEW PLY VOYAGER \$218.00
Per Month For 36 Months. Closed End Lease. Stock #76104 4 Cyl VIN PR151655 MSRP * \$15,595 Total Of Monthly Payments \$7848 With \$1500 Down

SHOP REEDMAN BEFORE YOU BUY LEASE OR RE-LEASE A CAR OR TRUCK

FLASH! If You Still Have Payments On Your Present Leased Car Or Truck We Would Like To Bid On Your Lease For A New Vehicle, Individual Lease, Or Company Leasing.

*'93 NEW T-10 BLAZER 4x4 4 Dr \$257.17
Per Month For 48 Months. Closed End Lease Stk# T-5005 6 Cyl VIN P2100977 MSRP * \$20,842 Total Of Mthly Pymts \$12,344.15 With \$1500 Down Total Of 55,000 MI

*'93 NEW COUGAR XR7 \$279.39
Per Month For 24 Months. Closed End Lease. Stock #93510 6 Cyl VIN PH602930 MSRP * \$16,698 Total Of Mthly Payments \$6705.36 With \$1500 Down

*'93 NEW CHEV LUMINA 4 DR \$176.51
Per Month For 36 Months. Closed End Lease. Stock #35301 6 Cyl VIN P9196642 MSRP * \$15,956
Total Of Mthly Payments \$6354.36 With \$2000 Down

*'93 NEW OLDS CUTLASS SUPREME S CPE \$273.00
Per Month For 36 Months. Closed End Lease. Stock #82088 6 Cyl VIN PD345617 MSRP * \$19,020
Total Of Mthly Pymts \$8228.00 With \$2000 Down

Closed End Leases
First Monthly Payment Plus A Security Deposit Equal To One Monthly Payment Is Required Upon Delivery. Lessee May Have The Option To Purchase The Car At Lease End At A Price To Be Negotiated With The Dealer At Lease Inception. At The End Of The Lease If You Do Not Exercise Your Option To Buy You Will Pay A Mileage Charge Of 10¢ Per Mile For Each Mile In Excess Of 15,000 Miles Per Year Plus The Costs Of Any Excess Wear Or Tear.

* Price Includes All Cost To Be Paid By A Consumer, Except For Licensing Costs, Registration Fees & Taxes.

CALL 215-757-4961
Ask For Reedman Leasing Dept.
Reedman Rte 1 Langhorne Pa.

Frederick
THE TRUCK PLACE

CENTRAL PA'S LARGEST GM DEALER!

OVER 200 NEW AND USED TRUCKS IN STOCK!

SOLD

'84 GMC CREW CAB
Dual Rear Wheels, High Steer, 1 Ton, Low Mileage

CHEV SUBURBANS
5 New & Used To Choose From
2WD & 4WD Available

'89 CHEV CREW CAB
Dual Rear Wheels, Silverado, 1 Ton

'91 GMC CONVERSION VAN
13 Pass., Extra High Top, Front & Rear Air, Fredrick Owned, Only 535 Miles, Ideal For Wheelchair Lift

'92 GMC 3500 SL
1 Ton Dump, 6,200 Mi., 350, AT

CONVERSION VANS
15 To Choose From!
Hi-Tops & Low Tops Available

EXT. CAB & CREW CAB DUALY'S
Centurion Conversions & Silverados In Stock 7 To Choose From! 2WD & 4WD Gas & Diesel (2) '92 Leftovers In Stock!

'93 CHEV 3500 1 TON SINGLE WHEEL CREW CAB
6.5 L Diesel Engine

'93 CHEV COUNTRY COACH
Pick-up Trucks, 2 & 4 WD, Reg. Cab & Extend Cab, 11 to Choose From

'91 CHEV 70 SERIES TRUCK 2 Speed, Rear, Low Miles,

Frederick
The SUPERMARKET OF TRUCKS

IF WE DON'T HAVE IT, WE'LL LOCATE IT!

1505 Quentin Rd.
Rt. 72 - Lebanon
SALES HOURS:
Mon.-Fri. 9-9
Sat. 9-5

(717) 274-1461 • PA (800) 222-5523