



1985 RST698 LST - 350 Mack, T2100 Trans., Nuway Air Ride, Asking \$25,000.00
 1985 Great Dane Reefer, 45'x13 1/2' x96", SBI Unit, Asking \$11,500.00
 1985 Mack + 1985 Reefer Combination, Asking \$35,000.00
 1981 Fruehauf flatbed, 42' w/aluminum floor & steel frame, new tires and brakes, asking \$6,500
 Spider w/air-cooled engine, asking \$6,000
 1981 Fruehauf flatbed + spider combination, asking \$11,000
 1981 Halb Knuckle Boom, Self Contained, Has 23' Reach, Asking \$6,500.00.

Call Day (302) 934-8506
 Nights (302) 934-7718
 Ask for James Bartleson

'89 Chevy 3500 w/12' Reading stake body, 350 FI, 4 spd, PS, PB, 10,500 GVW, 18,000 original miles, like new, red, \$13,500 717-733-2873

'89 Ford F250, HD, 3/4 ton, 351 FI, auto, PB, PS, AM-FM, 8,600 GVW, 48,000 miles, dark brown, 1 owner, excellent condition, \$8,975 717-733-2873

'89 Ford XL F250 Super Cab, 351 EFI, 5 spd, PS, PB, cruise, tilt, air, AM-FM, 8,800 GVW, 44,000 miles, new Michelin radials, blue, excellent condition, \$11,995 717-733-2873

'90 Ford XL F150, 300 EFI, 5 spd., PS, PB, AM-FM cassette, dual tanks, new radials, 45,000 miles, black, excellent condition, \$8,300. 717-733-2873

'92 Chevy Beauville G30 extended 15 passenger, 350 FI, auto, PB, PS, PW, PDL, cruise, tilt, dual air, AM-FM, Michelin radials, charcoal, excellent condition, \$15,900 717-733-2873

9' utility truck body w/cab over cover, 2 entry doors, \$1995 717-264-2265 6AM-5PM

Air slide 5th wheel 1-800-732-0004

Chevy C30, 1985, w/11' steel flatbed, 454, AT, PS, PB, AC, good condition, \$5900 717-345-4882



1987 F-350 XL 460
 4 Speed, 84,000 Miles, Gooseneck and Class III Hitch
 Excellent Cond. **\$8,500**
215/593-5502

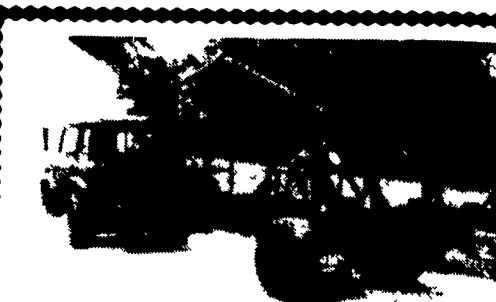


1987 MACK MS200
 with NEW Knapheide 16' Grain Body Dump, 54" Sides Not Shown, 175 HP, Diesel, 5 Speed, Power Steering
\$16,900.00
1-800-345-2829



New 18' Multi-Purpose Body, Tapered Sides, Hydraulic End Gate With Grain Door, 11 Ton Harsh Hoist, Red or Black on 79 Chevy C70 32060 GVW Air Brakes, 366 Gas, 5 Speed, 2 Speed Rear, Double Frame, Good Runner. \$11,600 Buys Complete Unit

Al's Truck Repair
 Shippensburg 717-530-8998



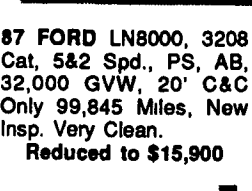
IH Cabover With Prentice Loader
 Gas, Log Grapple
\$2,200
 Call Eves. (304) 876-6653

R & R CAR AND TRUCK CENTER

84 IHC S1954, DT 466 210 HP, PS, AB, 5&2 Spd, 32,800 GVW, 22' C&C, New Paint, New Insp Call For Details



87 FORD LN8000, 3208 Cat, 5&2 Spd., PS, AB, 32,000 GVW, 20' C&C Only 99,845 Miles, New Insp. Very Clean. Reduced to \$15,900



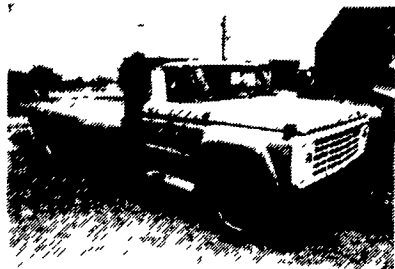
85 CHEVROLET 30, 16' Step Van, 4.8 Liter, PS, PB, AT, 10,000 GVW, Dual Wheels, Very Clean, New Insp Call For Details



CALL RAY LEED:
 (717) 560-4901

HARD TO FIND TRUCKS!

1979 FORD F600 w/20' FLATBED



V8, 4 Speed, PS, PB, 68,000 Miles

\$2,600

1989 CHEV C2500



350 V8, Auto, Air, 8600 GVW

\$8,950

1988 FORD F250 4x4



351 V8, 4-Speed, 8600 GVW

\$7,990

"THE TRUCK PEOPLE"
 Over 30 Pre-Owned Trucks In Stock!

BOYER MOTOR CO.

1065 S. State Street
 Ephrata, PA 17522

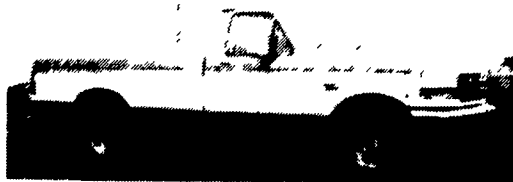
717-738-1885 1-800-786-1835

C P MARTIN FORD
 Presents the

NEW LOOK OF QUALITY

1993 FORD F-150 4x4

XLT, 5.0L, OD Trans., AC, AM/FM Cass., PW, PDL, Cruise, Tilt, Deluxe Two-Tone #3046



Was \$21,238 CP Martin Sale Price **\$17,699**

1993 FORD F-250 4x4

5.8L V-8, Auto OD, Argent Rear Bumper, All-Terrain Tires, 8 Ft. Bed, #3040



Was \$20,116 CP Martin Sale Price **\$17,900**

1993 FORD F-150 SUPERCAB 4x4

XLT Lariat, 5.0L V8, AT, AC, AM/FM Cass., PW, PDL, Deluxe Two Tone Paint, More #3064



Was \$24,696 CP Martin Sale Price **\$20,899**

1992 FORD E-350 SUPERWAGON

15 Passenger, 351 V8, Auto OD, XLT Trim, High Capacity Air, Completely Loaded!



SALE PRICE **\$19,795**

PUSH, PULL OR DRAG IT IN \$2500 MINIMUM TRADE

'92 GMC 4x4 SLE Every option 12,000 ml. w/glass cab \$17,995 - \$2,500 \$15,495	'91 F-150 LARIAT 5 Sp. PS, PB, AC. \$13,495 - \$2,500 \$10,995	'90 C-1500 SILVERADO AT, PS, PB \$11,495 - \$2,500 \$8,995	'92 TRACKER LS CONV. AT, PS, PB, 8,000 ML. \$13,995 - \$2,500 \$11,495	'92 RANGER XLT 4x2, 5 Sp., AC, PS, PB \$13,495 - \$2,500 \$10,995	'91 S-10 PU Bk & Red, V8, AT, PS, PB, AC \$11,495 - \$2,500 \$8,995	'91 CHEVY S.S. 454 PU 14,000 ML, Loaded w/Equip \$16,995 - \$2,500 \$14,495	'90 JEEP WRANGLER CONV. Bk, RWL, Rally Wheels \$11,995 - \$2,500 \$9,495	'90 FORD E-150 CONV. VAN AT, PS/PB, Loaded w/Equip, Cass. \$18,195 - \$2,500 \$15,695	'91 GMC Jimmy 4x4 AT, PS, PB, AC, AM/FM Cass. \$16,750 - \$2,500 \$14,250
'91 FORD AEROSTAR Edda Base/Edison AWD \$18,495 - \$2,500 \$15,995	'90 BRONCO II XLT AT, PS, PB, Nice \$10,950 - \$2,500 \$8,450	'92 F-150 XLT LARIAT AT, 2-Tone \$7,250 - \$2,500 \$4,750	'90 S-10 BLAZER Tahoe, V8, AT, AC, PS/PB \$12,295 - \$2,500 \$9,795	'90 RAM CHARGER 4x4 V8, Loaded w/Equip, 28,000 ML. \$14,495 - \$2,500 \$11,995	'90 CHEVY 454 S.S. AT, AC, Low Miles \$16,295 - \$2,500 \$13,795	'90 F150 XL AT, Blue/White \$11,450 - \$2,500 \$8,950	'91 FORD EXPLORER 4x4, 2 Tone \$17,495 - \$2,500 \$14,995	'91 S-10 4x4 4.3, VC-6, AT, PS, AC, 2-Tone \$14,995 - \$2,500 \$12,495	'91 BLAZER 4x4 4 Dr, AT, Very Roomy \$18,495 - \$2,500 \$15,995



(717) 733-6644
 CALL ON MY DIME
 1-800-258-2677

Rt. 272,
 North Reading Road, Ephrata
 (Across From The Green Dragon Sign)

