

EBY

USED EQUIPMENT SALE

POSSUM BELLY TRAILERS

- New Eby 1993 48'x102"x13'6" Cattle-Pot Jailhouse
- 1984 Chamberlain 47'x96"x13'2" Cattle-Hog Combo
- 1984 Barrett 46'x96"x13'6" Cattle Trailer Jailhouse
- 1983 Wilson 45'x96"x13'4" Cattle/Hog Combo
- 1982 Wilson 45'x96"x13'2" Cattle Trailer
- 1982 Wilson 45'x96"x13'6" Cattle-Pot

STOCK TRAILERS

- 1987 26' Eby Gooseneck
- 1986 Barrett 22'x7'x6'6"
- 1986 Featherlite 20'x7'x6'6"
- 1985 Moritz 20'x8'x6'10"
- 1985 Eby 45'x8'x8'8"

BODIES

- 1993 21'x6'6"x96" Double-Decker

Call For Special Pricing

- Omaha Steel Cattle/Grain Body, 14'x42" Sides
- (5) 12' Eby Aluminum Cattle Body
- 9 Ft. Eby Aluminum Cattle Body
- 8 1/2 Ft. Steel Dump Body with Holst
- 10 1/2 Ft. Dehart Steel Dump Body
- 20' Fruehauf - Deck-Rail & Decking
- 12'x7' Steel Flatbed Body

M.H. Eby, Inc.

1194 Main Street (Route 23)
Blue Ball, PA 17506
(717) 354-4971 (800) 292-4752
FAX: (717) 355-2114

4435 State Route 29
West Jefferson, OH 43162
(614) 879-6901 (800) 752-0507
FAX: (614) 879-6904

'87 Ford XL F250, 4x4 w/8' stake body, 351 auto, PB, PS, AM-FM, dual tanks, 8,600 GVW, 41,000 miles, excellent condition, \$8,900. 717-733-2873

'88 Chevy K30, 4x4, dually, 350 FI, auto, PB, PS, air, AM-FM, dual tanks, 10,000 GVW, 54,000 miles, 1 owner, \$10,900 717-733-2873

'87 Chevy C20 HD, 3/4 ton pickup, 350 FI, auto, PS, PB, air, AM-FM, dual tanks, 8,600 GVW, blue & white, \$7,400. 717-733-2873

'85 Chevy Sport Van, 12 passenger, 350 auto., PB, RS, AM-FM cassette, mechanically good, needs paint, \$2,900 717-733-2873

Lancaster Farming, Saturday, June 26, 1993-C27

1992 Reading SC-99-8 space cap w/2 swivel hooks. Excellent condition. Best offer (703)564-0619

429 gas engine w/453 Allison auto trans, complete, \$2000, Spicer 5 speed, 5752, \$450 908-788-5022.

44' Fruehauf flatbed w/5' aluminum removeable sides This trailer is in excellent condition. Good tires and brakes. Solid oak floor Good tarp PA state inspected. Only \$3,900 LanCo (717)396-9718.

48 ft aluminum cattle trailer \$4000 OBO (609)455-6637

'69 Heil 8000 gallon, 2 compartments, bottom load scully Priced to sell 717/383-1401

'69 Prentice crane, 2 1/2 ton w/40' boom, 8' jib, bucket, mounted on '72 Ford 600 chassis w/330 V8 engine, 4 speed, 2 speed axle, full width, 4 door utility box, \$5995 717-264-2265 6AM-5PM

(6) crew cab pickups, 1981 Chevy, 1982 GMC, 1988, 1989 Chevy and Fords Call Jerry 717-463-3701

'71 Int tri-axle dump, 18' aluminum box suitable for grain or coal 238 Detroit, PS, 5+4 (717)626-1397

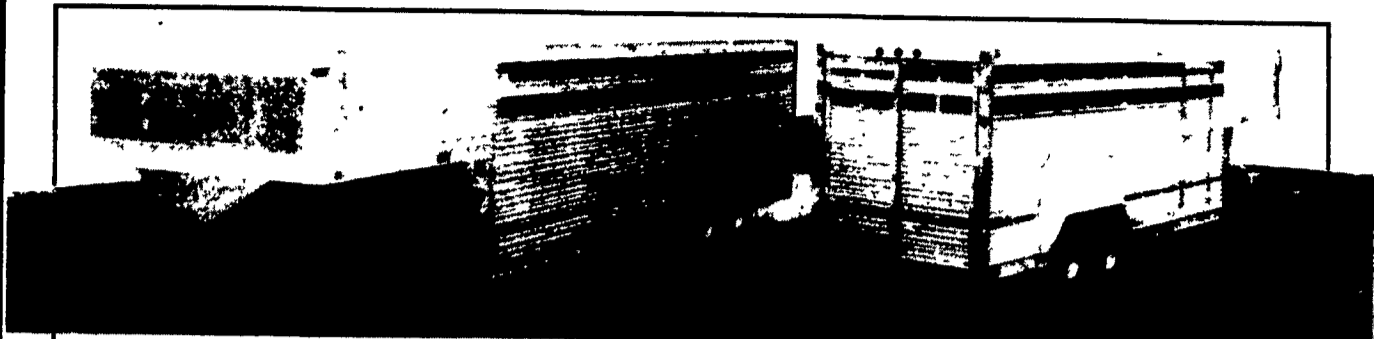
'72 Rogers Trailer Detachable Gooseneck Wetline, 18' Deck, 10X15 Tires, Asking \$9250 OBO 215-663-9221

74 Winnebago 16' Gooseneck Dump Trailer, Tri-Axle, 18,000 GVW, Very Good Condition \$3500 814-447-3374

81 Int. 2600 tdm. axle, 22' flat dump, w/grain sides, 56 GVW, 80 Int 1800, 20 ft flat, w/grain sides, 27 GVW, 78 Ford P600 step van, 15 GVW, 74 Ford 750 Cab/chassis 27GVW, 65 GMC 5000, 22 ft van body, 27 GVW (609)358-0831

'87 Ford pickup 4x4, 78,000 miles, engine fire, \$2,500 410-429-1927

EBY Quality Specs Don't Cost - They Pay!



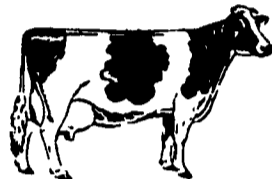
HERE'S WHY YOU CAN'T AFFORD ANYTHING LESS.

Eby livestock gooseneck trailers make top quality affordable. Both Wrangler and Ruff Neck models feature premium quality components and all-aluminum construction for greater payload efficiency, minimum maintenance and highest resale value.

The economical Wrangler series offers rugged design in lengths from 12' to 24', with a choice of

4 heights. The work horse Ruff Neck series is available in lengths from 20' to 32' and three standard widths, with a full range of custom options (including stainless steel front end).

These trailers are engineered for efficient operation and dependable service. So whatever your agri-transportation needs, Eby equipment satisfies the demands of your business.



*We Salute The Dairy Farm Families
A Vital Part Of Our Business*



EBY

M.H. Eby, Inc.

1194 Main Street (Route 23)
Blue Ball, PA 17506

(717) 354-4971 (800) 292-4752

4435 State Route 29
West Jefferson, OH 43162

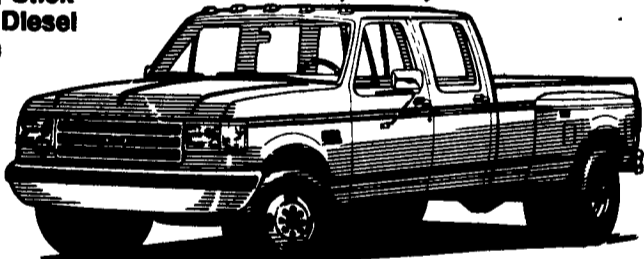
(614) 879-6901 (800) 752-0507 FAX: (614) 879-6904

Mark VII - Pickups - Broncos - Bronco II - Stake Body - Crew Cab -

'93 FORD CREW CABS

- In Stock
- (3) '93 Diesel, Stick
- (3) '93 Turbo Diesel (In transit)
- (3) '93 Centurions Diesel, Stick

As Low As **\$20,995**



'93 FORD F-150

#1442, 6 Cyl., 5 Spd, PS, PB, AM-FM St., Rear Step Bumper DELIVERED PRICE

\$10,995*



'93 FORD F-250

SUPER CAB 4x4 Diesel, Stick, PW, PL, More!
2 In Stock!



From **\$24,390**

'93 CONVERSION VANS

6 To Choose From!

V8, AC, Automatic, PS, PB, TV, Loaded, HI-Tops & Low Tops



* Prices include applicable rebates plus \$500 cash or trade. Tax, tags and doc fees additional. Payments at 10.9% APR for 60 Months.



'91 FORD F-350 XLT Dually, Crew Cab, 7.3 Diesel, AT, Loaded, 5th Wheel Hookup, 39,000 Mi., P1627 Call For Details



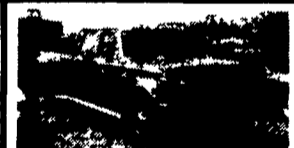
'91 CHEVY S10 PICK-UP 4.3 Liter, AT, A/C, 4x4, Tahoe Pkg., Red. #1663B ...\$13,495



'90 MAZDA 4x4 MINI VAN V6, AT, Loaded, Local Trade #P1625A.....On Sale \$15,500



'91 FORD AEROSTAR VAN 6 Cyl., AT, A/C, Loaded, Eddie Bauer Pkg., 37,000 Mi. #P1598\$16,925



'87 FORD F-350 CREWCAB DUALY 460 V8, AT, Loaded, 59,000 Mi., One Owner, #1337A\$15,899



'92 FORD MARK III CONVERSION VAN V8, AT, AC, Loaded, Silver #1074AOn Sale For \$19,900



'91 FORD EXPLORER XLT V6, AT, AC, Loaded, 40,049 Miles, Tan #1720A....\$18,250



'92 FORD F150 XLT 6 Cyl., 4x4, AT, A/C, Loaded, 9,400 Mi. #1624A\$17,453



'91 FORD BRONCO XLT AT, Loaded, 21,000 Mi., Super Clean P1609On Sale \$18,999

- '92 Aerostar Ext, XL, 22,000 MI, P1588 \$16,992
- '88 Toyota SR5 Extended Cab, 4x4, 5-Spd., AC, Sun Roof & More #1524A\$10,999
- '88 Bronco II XLT, V6, 4 Spd., A/C, Local Trade, Super Clean #P1530B\$11,679
- '91 Chevy S10 Blazer, 4 Dr., V6, Loaded, Tahoe Pkg., Local Trade #1680A\$15,999
- '91 Aerostar, Eddie Bauer, 4WD, V6, AT, Loaded, P1598\$18,925

- '90 F-150, XLT, 5.0L, 5 Sp., 28,000 MI, 1477A\$13,332
- '90 Ranger XLT, 4 Cyl., 5 Spd., 48,000 MI, 1446A\$8,997
- '90 Ranger XLT, 4 Sp., One Owner, 60,000 MI, 1135A\$7,997
- '89 Ranger, 4 Cyl., 5 Sp., Local, 1096A\$5,998
- '89 F-150 Supercab, 4x4, XLT, 351 V8, Loaded, 1488A\$14,266

Unless This Emblem Is On Your Car Or Truck You Probably Paid Too Much

9-9 Daily
9-5 Sat.
717-272-7671



SHEEHY LEBANON

SHEEHY FORD LINCOLN MERCURY INC.

20th & Cumberland St., Lebanon

Parts Dept. Open
Daily 8-5
Sat. 8-12
717-273-8168

Tempo - Cougar - Continental - Town Car - 4x4 - Box Van - Rangers -

Custom Vans

XLT

Grand Marquis

Marquis

Lynx

Topaz

Diesel Pickups

Mustang

T Bird