

Ag Exhibits Increase At Pa. Fair

PHILADELPHIA — The Pennsylvania Fair was held at the Philadelphia Park Racetrack recently. A great increase in the number of competitive exhibits added a greater element of agriculture to the show. More than 275 exhibitors participated in the event.

Four large animal shows were conducted during the 12 days of the show. Youth, open-class beef, sheep, 4-H goats, and potbellied pigs were shown. Agriculture

coordinator for the show was Beverly Gruber of New Tripoli.

Following are the results of the shows.

PA. Fair 1993 Sheep Show

Supreme Ram: Willow Manor Farm, Clinton, NJ.

Cheviot: Champion Ram: Michelle Snyder, Parker, PA; Reserve Champion Ram, Michelle Snyder. Champion Ewe Michelle Snyder. Supreme Champion Michelle Snyder.

Dorset: Champion Ram Willow Manor Farm, Clinton, NJ; Reserve Champion Ram, Robert Riccioni, Frenchtown, NJ; Champion Ewe, Robert Riccioni, Frenchtown, NJ;

Reserve Champion Ewe, Willow Manor Farm, Clinton, NJ; Supreme Champion, Willow Manor Farm, Clinton, NJ

Hampshire: Champion Ram, Willow Manor Farm, Clinton, NJ; Reserve Champion Ram, Dirk Wise, Spring Mills, PA; Champion Ewe Everett Hampshires, Upper Black Eddy, PA; Supreme Champion, Everett Hampshires, Upper Black Eddy, PA.

Shropshire: Supreme Champion, Willow Manor Farm, Clinton, NJ.

Southdown: Champion Ram, Hunter Family, Fleetwood, PA; Reserve Champion Ram, Poverty Point Farm, Valencia, PA; Champion Ewe, Willow Manor Farm, Clinton, NJ; Reserve Champion Ewe, Willow Manor Farm, Clinton, NJ; Supreme Champion, Hunter Family, Fleetwood, PA.

Suffolk: Champion Ram, Torok Family, Pittstown, NJ; Reserve Champion Ram, Melanie Snyder, Parker, PA; Champion Ewe, Torok Family, Pittstown, NJ; Reserve Champion Ewe, Melanie Snyder, Parker, PA; Supreme Champion, Torok Family, Pittstown, NJ.

Oxford: Champion Ram, Jeffrey Everett, Upper Black Eddy, PA; Reserve Champion Ram, Isaac Garges, Telford, PA; Champion Ewe, Joyce Heffner, Fleetwood, PA; Reserve Champion Ewe, Susan Eshelman, Sinking Spring, PA; Supreme Champion, Joyce Heffner, Fleetwood, PA

Pa. Fair Beef Show

Angus: Champion Eric Berkheimer, Mechanicsburg, Pa.; Reserve Champion, Lindsey Tice, Bridgeton, NJ.

Polled Herefords: Champion, Jason Allar, Williamstown, NJ; Reserve Champion, Lilliput Farms, Lederach, PA.

Simmental: Champion, Eric Berkheimer, Mechanicsburg, Pa.; Reserve Champion, Leeann Tice, Bridgeton, NJ.

Market Steer: Grand Champion, Tom Newpher, Fleetwood, PA; Reserve Champion, Eric Berkheimer, Mechanicsburg, Pa.

Youth Goat Show

Alpine: Junior Champion, David Michalik, Sellersville, Pa.; Reserve Junior Champion, Christine Michalik, Sellersville, Pa.; Senior Champion, Christine Michalik, Sellersville, Pa.; Reserve Senior Champion, David Michalik, Sellersville, Pa.; Grand Champion, Christine Michalik, Sellersville, Pa.; Reserve Champion, David Michalik, Sellersville, Pa.; Champion Challenge, Christine Michalik, Sellersville, Pa.

Nubian: Junior Champion Christal Kloiber, Bath, Pa.; Reserve Junior Champion, Christine Michalik, Sellersville, Pa.; Senior Champ-

(Turn to Page C10)



Tom Newpher of Fleetwood, Pa. showed the champion steer. He is pictured with the beef judge, Henry Gruber of New Tripoli.



Crystal Kloiber of Bath, Pa. showed the best of show goat. Crystal is a member of the "Udder Delight 4-H Club" in Northampton County. Presenting her the "Champion Chair" is Ernie Cowen, assistant fair manager.



The Polled Hereford champion was shown by Jason Allar of Williamstown, N.J. and Lilliput Farms showed the Polled Hereford reserve champion.

KEN CLUGSTON
(717) 665-6775

**CRAFT-BILT
CONSTRUCTION INC.**

FARM-HOME BUILDING
1242 Breneman Road
MANHEIM, PA 17545
PH: (717) 665-4372

BUILDING & REMODELING FOR —
DAIRY RESIDENTIAL
SWINE POLE BUILDINGS
BEEF STORAGE

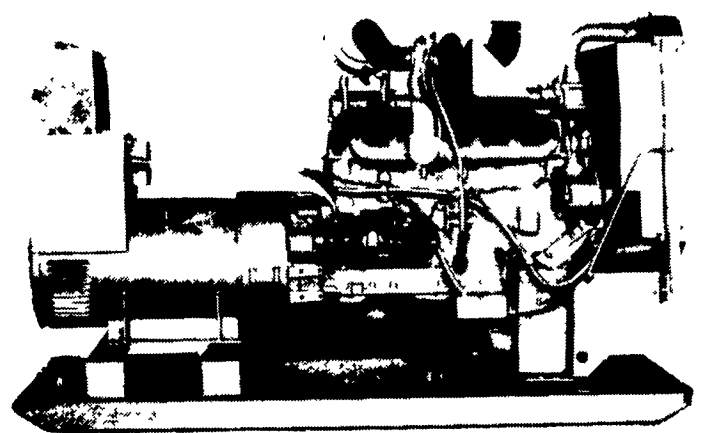
**Need Your
Farm Buildings
Painted?**

Let us give you a price!
Write: Daniel's Painting

637-A Georgetown Rd.
Ronks, PA 17572
(or leave message)

(717) 687-8262

*Spray on and
Brush in Painting*



Automatic Systems

NEW

USED

- 1 - 30 KW LP Gas
- 2 - 50 KW PTO
- 1 - 60 KW PTO

- 1 - 10 KW Gas
- 1 - 15 KW P.T.O.
- 1 - 10 KW P.T.O.
- 1 - 85 KW LP Gas
- 1 - 60 KW Diesel

24 HR
SERVICE

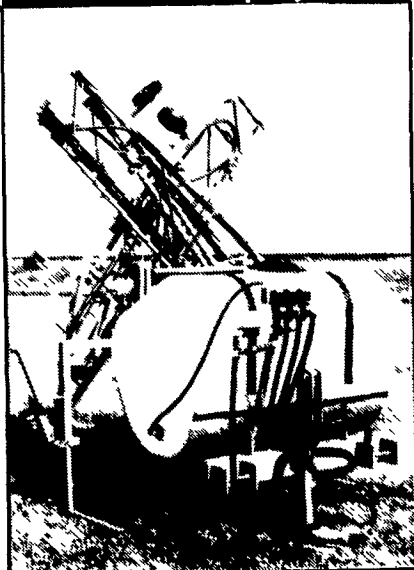
MAXI-POWER

RADIO
DISPATCH

330 Fonderwhite Rd. Lebanon, PA 17042
717-273-4544 1-800-272-MAXI

If You're Planning On
SPRAYING
POST EMERGENCE
AG-CHEM
Has Your **SPRAYER**

TPH 250 Sprayer



400 Skid Unit

COMPLETE LINE OF PARTS



Serving The Farming Industry
For Over 25 Years.

1188 Enterprise Rd
East Petersburg, PA 17520

CALL (717) 569-2610
FOR MORE INFORMATION

**CONTACT US FOR THE
DEALER NEAREST YOU.**

"BELT BUSTERS"

Save on Flat Belts for Your Farm Machinery! We Will Make the Belt You Need and Ship Same Day by U.P.S. - We're Fast!

- ★ Bale Thrower Belts
- ★ Round Baler
- ★ Harvesting Machines Like Bean, Cherry, Grape, Etc.
- ★ Forage Box Belts for Gehl, Grove Kasten, New Idea, Etc.

SORRY, NO V-BELTS

Agricultural Belt Service

10632 Rt. 75
Eden, New York 14057

PHONE 716-337-BELT