

Anthony Landis

AUTO BODY & SALES
1701 B Division Hwy.
New Holland, PA • 717-355-0644

Specializing in Rebuilt Collision Damage Vehicles



'87 FORD F-150 XL
300 FI, 4 Speed, 59,000 Mi.,
5450 GVW, 2-tone, Very Nice,
Minor Damage
\$3,000

COMING IN: '90 FORD RANGER SUPERCAB, XLT, V6,
AT, PS, PB, AC, Tilt, Cruise, Cass.,
PW, PDL, 15,500 Miles, Needs Bed &
Some Sheet Metal
\$4,950

(800) 533-3837

YOUR DIRECT LINE TO GENUINE GM PARTS

When you call the number listed above you'll reach our wholesale parts specialists, who can help you keep your GM repair work moving quickly. Ask About:

- Specializing in GM Medium Duty Trucks, Current and Obsolete.
- \$500,000 Parts Inventory
- Parts Locator For Those Hard To Find Items
- We Ship Anywhere. Local Delivery Available.
- Experienced, Knowledgeable Personnel.

LEFEVER BROS.
DILLSBURG

(717) 432-9697

Quality Dealer Since 1921
406 U.S. Route 15 • Dillsburg, PA 17019



Mr. Goodwrench

PASSENGER VAN SALE



Brand New

1993 GMC SAFARI VAN
8 Passenger Van #540887

\$16,923

- Automatic
- Tilt Wheel
- AM/FM/Cass
- 4.3L V-6
- Air Conditioning
- Cruise Control
- Rally Wheels
- Pulse Wipers

* 7 NEW VANS TO CHOOSE FROM *

1986 GMC SAFARI VAN

- Automatic - Pwr Windows
- Air Conditioning - Tilt Wheel
- Rally Wheels - V-6
- Running Boards - AM/FM Radio
- 8 Passenger Seating #525633A

1985 CHEVY SUBURBAN

- Automatic Transmission,
 - Air Cond., Pwr. Str.,
 - 350 V8, Pwr. Brakes
- READY TO TOW!!

\$5,995.00

1992 CHEVY ASTRO VAN

- 8 Passenger Van
- Automatic - 4.3 V6
- Air Cond. - Tilt Wheel
- Cruise Control - Pwr. Windows
- Pwr. Locks - Rally Wheels #A212631

1992 GMC RALLY STX VAN
12 PASSENGER VAN #A508304

- Automatic - 350 V-8 Engine
- Tilt Steering - Cruise Control
- Power Wind. and Locks - AM/FM Cass. And Much More

\$15,762.00



* 2 OTHER RALLY VANS TO CHOOSE FROM *

Ebersole

Pontiac - Olds - GMC

1900 Cumberland St., (Rt. 422)
Lebanon, PA

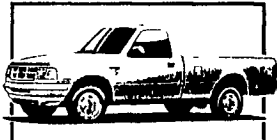
Phone (717) 273-7611

Showroom Hours:
Daily 8:30 AM - 9 PM
Sat. 8:30 AM - 4 PM

150 TRUCKS IN STOCK

Overstocked With Trucks!

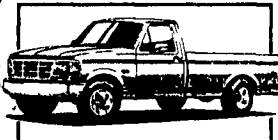
The Area's Best Selection Of Light & Heavy Duty Trucks On Sale Now!



NEW '93 FORD RANGER XLT 4x2

5-spd O/D trans, sliding rear window, chrome rear bumper, stereo cassette, interval wipers, cast alum wheels, 2-tone. #F7713

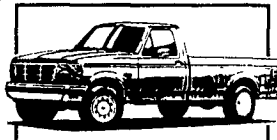
SAVE \$1115 OVER
NOW PRICED AT \$992



NEW '93 FORD F-150 XL 4x2

6 cyl eng, 5-spd O/D trans, headliner, 5450 GVW, aux fuel tank, interval wipers, argent step bumper, stereo cassette, more! #F7406

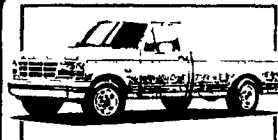
SAVE \$1350 OVER
NOW PRICED AT \$11,202



NEW '93 FORD F-150 XL 4x4

6 cyl eng, 5-spd O/D trans, headliner, 6250 GVW, aux fuel tank, interval wipers, argent step bumper, stereo, much more! #F7618

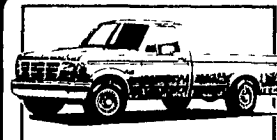
SAVE \$1637 OVER
NOW PRICED AT \$13,983



NEW '93 FORD F-150 XLT PICKUP

6 cyl, 5 speed trans, power steering & brakes, air cond, AM/FM stereo, chrome step bumper, aux fuel tank two-tone paint #F7207

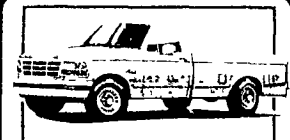
SAVE \$2282 OVER
NOW PRICED AT \$13,597



NEW '93 FORD F-150 4x4 XLT PICKUP

5 speed trans, pwr steering & brakes, air cond, AM/FM stereo, chrome rear step bumper, aux fuel tank, two tone paint, #F7794

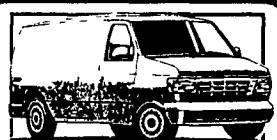
SAVE \$2590 OVER
NOW PRICED AT \$15,690



NEW '93 FORD F-250 4x4 PICKUP

V8, 5 speed trans overdrive, pwr strg & brks, air cond, AM/FM stereo, rear step bumper, argent low mount mirrors, sport whl covers, #F7159

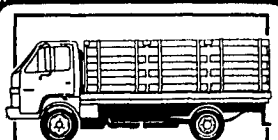
SAVE \$2852 OVER
NOW PRICED AT \$17,166



NEW '93 FORD E-350 14ft WALK-IN VAN

V8, automatic transmission, 11,700 GVW, power steering & power brakes, AM/FM stereo, dual fuel tanks, #F7570

\$19,461



NEW '93 ISUZU NPR STAKE BODY

135HP turbo diesel, 5-spd trans, 12 foot stake body, 11,000 GVW, exhaust brake, tilt wheel, 33 gallon fuel tank, more! #3118

SAVE \$5040 OVER
NOW PRICED AT \$18,992



NEW '93 FORD SUPERDUTY CAB & CHASSIS

V8 diesel supercooling eng, 5-spd O/D trans, 151" wheel base, 15,000 GVW, headliner insulation pkg, cassette, more! #F7385

SAVE \$3325 OVER
NOW PRICED AT \$19,986



NEW '92 FORD CF7000 CAB & CHASSIS

185HP diesel, 6 speed, 2600 GVW, air brakes, power steering, radial tires, aux fuel tank. #F6221

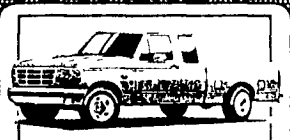
SAVE \$4834 OVER
NOW PRICED AT \$26,479



NEW '93 FORD F-350 4x4 CAB & CHASSIS

V8, diesel, 11,000 GVW, 5 speed transmission, power steering & brakes, stereo & cass, headliner, dual fuel tanks, all terrain tires, #F7699

\$20,970



NEW '93 FORD F-250 SUPERCAB 4x4

XLT trim, V8, auto O/D trans, air cond, power wind & locks, cassette, trailer towing pkg, aux fuel tank, sliding window. #F7650

SAVE \$2950 OVER
NOW PRICED AT \$22,997

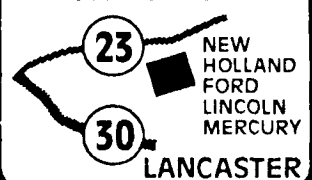
PRICES INCLUDE REBATES IF APPLICABLE. TAX & TAGS ADDITIONAL.

New Holland FORD ISUZU

717-354-4901 • 800-642-8605



Just 15 Minutes East Of Lancaster On Route 23



Route 23, New Holland, PA