

TRUCKCRAFT



PICKUP INSERT DUMPER
For FREE brochure, call toll free 24 hr.
1-800-755-3867

- 1992 Ford Club Wagon XLT, 15 Pass. Maxi Van, V8, AT, Dual AC, Loaded, White, 16,300 Mi. \$18,500
- 1992 Ford F-250 XLT V8, AT, Loaded, Black, 20,200 Mi. \$14,800
- 1991 Pontiac Grand Prix LE, 4 Dr., Quad 4, AT, AC, CR, Tilt, PDL, AM-FM Cass., White, 55,900 Mi. \$8,800
- 1991 Buick Century V6, AT, AC, CR, Tilt, AM-FM Cass., Black, 55,200 Mi. \$7,900
- 1991 Dodge Monaco LE, V6, AT, AC, CR, Tilt, AM-FM, Blue, 50,000 Mi. \$6,400
- 1990 Chevy Corsica LT, V6, AT, AC, AM-FM Cass., Blue, 62,600 Mi. \$5,900
- 1990 Mitsubishi Eclipse, 4 Cyl., AT, Loaded, Maroon, 64,700 Mi. \$7,600
- 1990 Olds Delta 88 Royale, V6, AT, Loaded, Silver, 53,500 Mi. \$8,900
- 1990 Pontiac Grand Am SE, 2 Dr., Quad 4, 5 Spd., Loaded, Black, 24,000 Mi. \$8,900
- 1990 Chevy Beretta GTZ Quad 4, 5 Spd., Loaded, Sunroof, 43,900 Mi. \$8,900
- 1989 Ford Mustang GT, V8, 5 Spd., Loaded, Sunroof, Black, 59,900 Mi. \$8,600

Brubaker's Auto Sales
Myerstown, PA
717-866-5237

Diesel Engines Detroit, 318, 671, V-653, 6V92, 82, Chev diesel 6 2 Other engines and truck parts Reasonable prices Call after 6PM, (215)944-9871

Dutchie flatbed trailer w/3 7,000 lb axles, mini 5th wheel hitch, electric brakes, \$3800 OBO 717-786-7502

FOR SALE 1963 N600 Ford dump, 21,000 GVW 391 4W/2spd 717/724-5055

FOR SALE 1990 Ford LXT Lariat, 4x4, 7.3 diesel cruise, S/C, PS, PB, AC AT, OD PW, PDL, AM/FM cass, TK cab, silver/blue, 49,000 miles 717-354 0605

FOR SALE 1973 Diamond Reo, tandem axle, gas, rebuilt engine, has model H telescock Call Gerald at 717-463-3701

For Sale 1988 Int'l Tractor, 475 Detroit, 13Sp, 3 55 Rears, Air Ride, 270 Wb Rolled on Right Side, Aluminum Wheels, Needs Cab Hood Bunk \$10,000 Franklin Co 717-532-8133

Fruehauf flatbed 42' air-ride slider, good shape, \$3500, also Fruehauf single axle lowbed, \$1800 Buck Co 215/794-8713 evenings

Mack R Model Cab, Original Paint, No Rust, No Dents, \$3,200 304-876-6653 Evenings

Reefer trailer 26', w/ Thermo King, road ready or good for cold storage Priced to sell (717)597-4470 evenings

Tandem axle Mack boom truck Call Jerry 717-463-3701

Trailer 15 Ton Birmingham Beavertail Lo-Boy for Single Axle Tractor, Excellent Condition \$1,700 304-876-6653 Evenings

EBY

USED EQUIPMENT SALE

POSSUM BELLY TRAILERS

- New Eby 1993 48'x102"x13'6" Cattle-Pot Jailhouse
- 1984 Chamberlain 47'x96"x13'2" Cattle-Hog Combo
- 1984 Barrett 46'x96"x13'6" Cattle Trailer Jailhouse
- 1983 Wilson 45'x96"x13'4" Cattle/Hog Combo
- 1982 Wilson 45'x96"x13'2" Cattle Trailer
- 1982 Wilson 45'x96"x13'6" Cattle-Pot

STOCK TRAILERS

- 1987 26' Eby Gooseneck
- 1986 Barrett 22'x7'x6" 1986 Featherlite 20'x7'x6" 1985 Moritz 20'x6'x6" 1985 Eby 45'x8'x6"

BODIES

NEW

- 1993 21'x6'6"x96" Double-Decker
- Call For Special Pricing
- Omaha Steel Cattle/Grain Body, 14'x42" Sides
- (5) 12' Eby Aluminum Cattle Body
- 9 Ft. Eby Aluminum Cattle Body
- 8 1/2 Ft. Steel Dump Body with Hoist
- 10 1/2 Ft. Dehart Steel Dump Body
- 20' Fruehauf - Deck-Rail & Decking
- 12'x7' Steel Flatbed Body

M.H. Eby, Inc.
1194 Main Street (Route 23) Blue Ball, PA 17506 (717) 354-4971 (800) 292-4752 FAX: (717) 355-2114
4435 State Route 29 West Jefferson, OH 43162 (614) 879-6901 (800) 752-0507 FAX: (614) 879-6904

Frederick
THE TRUCK PLACE

CENTRAL PA'S LARGEST GM DEALER!

OVER 200 NEW AND USED TRUCKS IN STOCK!



SOLD

'84 GMC CREW CAB
Dual Rear Wheels, High Sierra, 1 Ton, Low Mileage

CHEVY SUBURBANS
5 New & Used To Choose From
2WD & 4WD Available

'89 CHEV CREW CAB
Dual Rear Wheels, Silverado, 1 Ton

'91 GMC CONVERSION VAN
13 Pass., Extra High Top, Front & Rear Air, Frederick Owned, Only 335 Miles, Ideal For Wheelchair Lift.

'92 GMC 3500 SL
1 Ton Flatbed, 6,200 Mi., 350, AT

CONVERSION VANS
15 To Choose From!
Hi-Tops & Low Tops Available

EXT. CAB & CREW CAB DUALY'S
Centurion Conversions & Silverados In Stock 7 To Choose From! 2WD & 4WD Gas & Diesel (2) '92 Leftovers In Stock!

'93 CHEVY 3500 1 TON SINGLE WHEEL CREW CAB
6.5 L Diesel Engine

3500 HD CAB & CHASSIS
6.5 L Turbo, Heavy Duty, 15,000 GVW

VAN BODY TRUCKS
New & Used Available

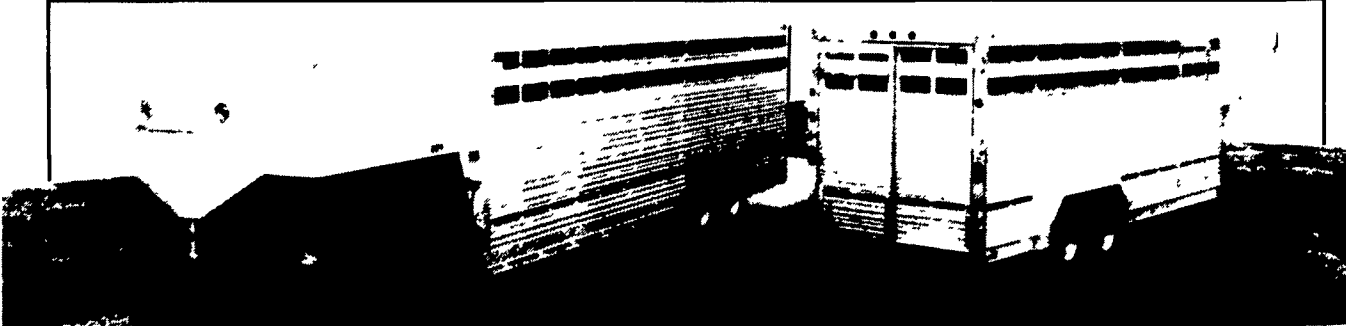
IF WE DON'T HAVE IT, WE'LL LOCATE IT!

Frederick
The SUPERMARKET OF TRUCKS

1505 Quentin Rd. Rt. 72 - Lebanon
SALES HOURS:
Mon.-Fri. 9-9
Sat. 9-5

(717) 274-1461 • PA (800) 222-5523

EBY Quality Specs Don't Cost - They Pay!



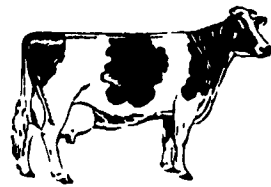
HERE'S WHY YOU CAN'T AFFORD ANYTHING LESS.

Eby livestock gooseneck trailers make top quality affordable. Both Wrangler and Ruff Neck models feature premium quality components and all-aluminum construction for greater payload efficiency, minimum maintenance and highest resale value.

The economical Wrangler series offers rugged design in lengths from 12' to 24', with a choice of

4 heights. The work horse Ruff Neck series is available in lengths from 20' to 32' and three standard widths, with a full range of custom options (including stainless steel front end).

These trailers are engineered for efficient operation and dependable service. So whatever your agri-transportation needs, Eby equipment satisfies the demands of your business.



*We Salute The Dairy Farm Families
A Vital Part Of Our Business*



EBY
M.H. Eby, Inc.

1194 Main Street (Route 23)
Blue Ball, PA 17506
(717) 354-4971 (800) 292-4752

4435 State Route 29
West Jefferson, OH 43162
(614) 879-6901 (800) 752-0507 FAX: (614) 879-6904