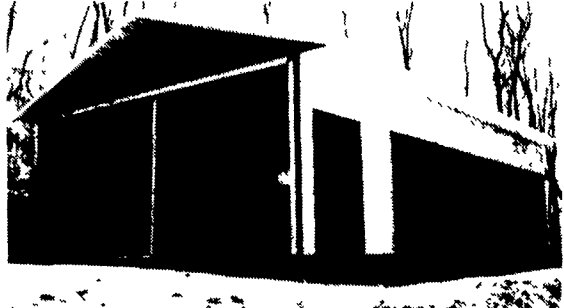


**Kirby** **A.S. Hoover, Inc.**  
 Allied Steel Buildings  
 3125 Manor Road  
 Coatesville, Pennsylvania 19320  
 1-800-942-2591

**Ceco Building Systems**  
 A Division of CECO Company



Quality Unobstructed Insulated Spans 20 to 120 feet.  
 B.C. Spans to 240 feet. Engineered Custom Drawings.  
 Commercial • Industrial • Agricultural • Churches • Hangers • Arenas  
 Beauty, durability and SAFETY of steel, cost competitive with wood.



## POLE BUILDINGS

CUSTOM DESIGNED & ENGINEERED

- COMMERCIAL    AGRICULTURAL    RESIDENTIAL
- HORSE BARN • ARENAS • GARAGES
- IMPLEMENT SHEDS

**BYLER CONSTRUCTION**  
 Dennis E. Byler

FREE ESTIMATES  
**717-866-6302**



# GLENWOOD METAL FORMING

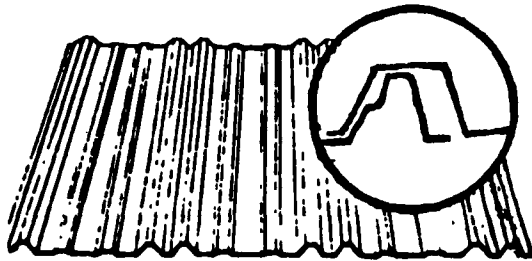
809 Glenwood Dr., Ephrata, PA 17522

FAX

717-733-9590 - 1-800-582-9956 - 717-738-4988

MANUFACTURERS OF  
**METAL ROOFING**  
 AND  
**SIDING PANELS**

WITH CUT TO  
 LENGTH LINE  
 IN 36" WIDTH



29 Ga. Galvanized  
 26 Ga. Galvalume  
 .024 Mill Finish Alum.

29 Ga. Painted  
 26 Ga. White  
 29 Ga. 304 Stainless Steel

## 24 Ga. Standing Seam Roofing

In Galvanized - Galvalume & Painted  
 Commercial & Residential Panels

5 & 6" K-Style Alum. Seamless Gutters

- Pre-Hung Thermo Doors
- Agri Built Windows
- Ridgeolators
- Roofing Nails & Screws

- Sliding Door Track Trolley & Hardware
- Ridge Vents

BARNs -- RIDING ARENAS -- SHEDS -- ETC.

## "Steel Top" Buildings

manufactured & erected by  
**H.B. SMITH CONSTRUCTION CO.\***  
 223 Warner Road, Columbus, NJ 08022

### DID YOU KNOW?

H.B. SMITH CONSTRUCTION CO. is one of the few companies in North America that both MANUFACTURES and ERECTS buildings with its own equipment and factory trained technicians? By eliminating the middle man, the customer (that's YOU!) will have CONFIDENCE & PIECE OF MIND knowing that ONE company will guide him (or her!) from the initial planning stages through the completed project!!!

(Lease Financing Available)

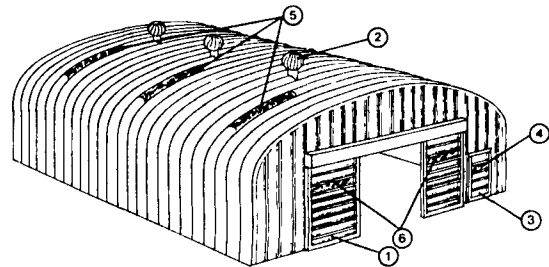
**SPRING RIDING ARENA SPECIALS!!**  
**609-267-5571 or FAX 609-267-8135**

\* A Division of H.B. SMITH MACHINE CO., INC.  
 PRIDE IN WORKMANSHIP - PRODUCT GUARANTEE - COURTEOUS SERVICE

## STORAGE PROBLEMS???

AT LAST, THE ANSWER!!!

SOLVE THEM TODAY WITH A STATE-OF-THE-ART STEEL STRUCTURE.



Erect the Building Yourself And Save Big \$\$\$ Dollars.

#### Accessories

- 1) Sliding doors      4) Door lights
- 2) Ventilators      5) Skylights
- 3) Service doors    6) Sliding door lights

EASILY MAINTAINED  
 EASILY ERECTED.  
 VERSATILE.  
 STRONG.

NO  
 LOST  
 SPACE  
 AS IN  
 TRADITIONAL  
 POLE BUILDINGS.

See Our Display At The  
 Animal Housing Expo  
 Lebanon Fairgrounds  
 July 13th and 14th

Call or Write Today For FREE Details and Brochures  
**800-854-5568 or 717-927-8222**  
 "Meeting Tomorrow's Building Needs Today"

## BLUE MOUNTAIN STRUCTURES

BROGUE, PENNSYLVANIA 17309

## WEAVER CEILING & INSULATION

### TRI-PLY (Vapor Barrier) CEILINGS

For a low-cost ceiling in chicken, hog, dairy buildings and shops

- ▲ Strong, Durable, High Gloss White
- ▲ Sound Absorbent
- ▲ Easy Washdown

Material only 6¢ sq. ft. — Installation available



Radiant Barrier  
 Foil Faced Air Cell Insulation  
 From European Technology

Double Bubble - 27¢ sq. ft.  
 Call or write for free literature

### Weaver Insulation and Ceiling

RD #1, Box 71,  
 Mt. Pleasant Mills, PA 17853  
**(717) 539-2615**