

850-Gallon Tank Available For Caddy

LINCOLN, Neb. — The Blue-Jet LandTracker, the multiple-use conservation tillage tool caddy, is available with a factory-fitted tank for fertilizer or chemical applications.

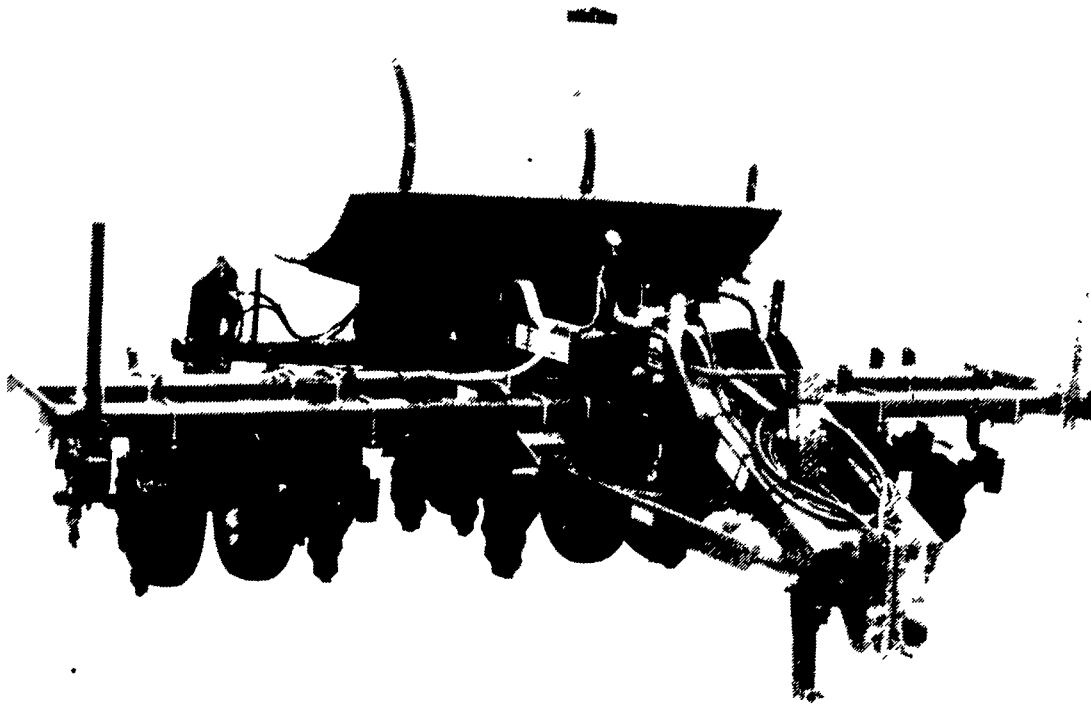
The 850-gallon elliptical tank comes complete with saddle for mounting directly to the Land-

Tracker frame. The tank features a sump that ensures complete emptying during use.

The larger tank capacity cuts refilling time to give the operator more productivity in the field.

LandTracker features two threepoint hitches for attaching a

variety of tool bar configurations. This implement caddy accommodates planters, drills, tillage tools, coulters, bars, and even an optional tow hitch for pull-type implements to permit the operator to perform up to three operations in one pass.

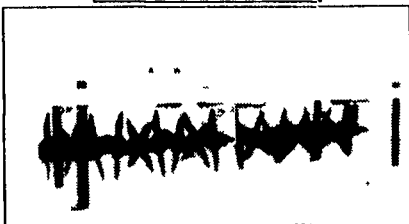
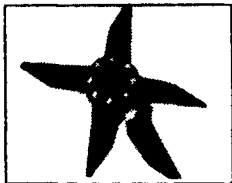


The Blue-Jet LandTracker, the multiple-use conservation tillage tool caddy, is available with a factory-fitted tank for fertilizer or chemical applications. The 850-gallon elliptical tank comes complete with saddle for mounting directly to the LandTracker frame.

~ ATTENTION ~
DAIRYMEN & LIVESTOCK PRODUCERS
A GOOD THING JUST GOT BETTER!
 ★ NOW AVAILABLE WITH BOLT ON TEETH ★

FARMING FOR THE FUTURE with **Aer-Way**

→ A new AERWAY can be your ticket to INCREASED PROFITS ←
 and help you comply to your conservation plan.



"This year we ran the Aer-Way over half the land where we had harvested corn silage. We then spread between 4,000-5,000 gallons of liquid manure per acre and deked the seed bed to prepare for small grains. We were absolutely amazed at the difference where we used the Aer-Way and one deking. My non-Aer-Wayed ground was deked 3 to 4 times and still wasn't as good. I would recommend the Aer-Way to other farmers as it softens the ground and lets rain and manure penetrate instead of running off."
 W.W. Sandford III -
 Kerwood Farm, Orange, Virginia

Helping Ranchers and Dairymen Make Better Hay and Pastures Throughout the Nation.
UNIVERSITY TESTS SHOW

- AerWay-ing Pays
- Increases yield and quality
- Important part of intensive hay and pasture management
- Helps conserve valuable soil, fertilizer and water.
- Reduces compaction
- Improves manure management
- Reduces run-off
- Promotes extended stand life

"Earlier this spring, I used the Aer-Way Implement and Aer-Way chain harrow on my rolling pastureland. This was done to open up the ground to get water into the sloping grasslands. At the same time I pulled the Aer-Way chain harrow to scatter the cattle manure around. Even after the dry summer we had, I noticed that the Aer-Wayed ground held the moisture better and we got thicker and taller regrowth where we ran the machine."
Dr. Rex Wilhelm D.V.M., Stuart, Iowa



"I have better pastures since I started using the Aer-Way to aerate and renovate my pastures. Using the Aer-Way has helped me get the nutrients where they are needed. I would not recommend fertilizing or liming without running the Aer-Way first."
Sandy Fisher, Brookview Farm - Beef Cattle Operation Manakin-Sabot, Virginia

FLEXIBLE CHAIN HARROW
 One of the heaviest in the industry.
 INTENSIVE GRAZING MAINTENANCE
 PASTURE RENOVATION
 SEED BED PREPARATION

- Yes, please send me free information about your:
- Flexible Chain Harrow
- Aer-Way Implement

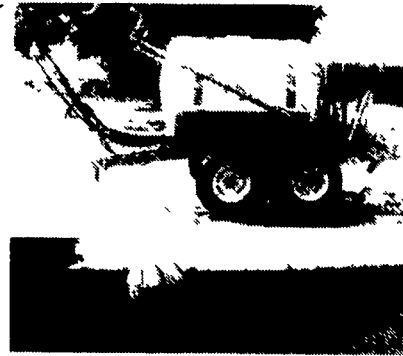
AGRI-QUIP CORPORATION
 3920 MARKET STREET, CAMP HILL, PA. 17011
1-800-228-8032

For complete details on the Blue-Jet LandTracker with 850-gallon tank, contact Thurston Mfg. Co., Hwy. 87A, P.O. Box 218, Thurston, NE 68062, (402) 385-3042 or (800) 658-3127.



Your Complete Headquarters For Sprayers And Parts

HEAVY DUTY SPRAYERS BUILT STRONG TO PERFORM TOUGH



- 200, 300 & 500 Gal. Trailer Models
- 110, 150, 200 & 300 Gal. 3 Pt. Hitch Models

FEATURES AVAILABLE:

- 30', 35' and 40' Booms
- 30' & 45' All Hydraulic Folding Boom
- **Quick Teejet** No Drp Nozzles.
- Independent Boom Suspension
- Eliminates All Boom Bouncing.

At Last! A Reliable, New Stainless Steel **AG-CHEM FOAM MARKER** Reg. \$869.00 **SPECIAL \$830.00**

Each Foam Marker Contains:

- Mixing chamber for each boom.
- Electric harness for in-cab controls (on-off/left-right).
- Drop hoses for each boom.
- Hose for boom lengths up to 47'.

The Ag-Chem foam marker offers you efficient operation with a 12 volt compressor that draws only 9 amps. Independent left and right boom markers can be controlled from the cab for on-the-go operation. That lets you operate either boom marker for precise, economical foam placement. And best of all the Ag-Chem Foam Marker produces a dense foam within seconds of agitation, and has a dependable output that can be adjusted for volume.

Use with the new 80-to-1™ high concentrate foam



TERRA-TRONICS I

Electronic Monitor Measures Working Acres And Ground Speed

- Easy-to-see digital readout
- Easy-to-operate touch sensitive keys
- Operates with any field implement requiring acre measurement - pulled, mounted, or self propelled sprayers, combines, etc.



Reg. \$212.00
SPECIAL \$188.00

Handy Half Gallon AG FOAM



Reg. \$10.20
SPECIAL \$9.25

FOAM DYE For Higher Visibility Foam

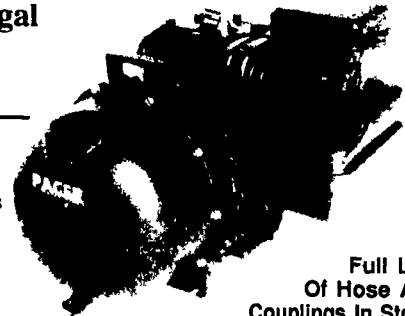
SPECIAL \$12.00 Pint

Self-Priming Centrifugal PACER PUMPS

• 3 H.P. 'S' Series
 1 1/2" Or 2" Ports

Reg. \$212.00

SPECIAL \$185.50



Full Line Of Hose And Couplings In Stock!

Features:

- Self-priming to 20 feet
- Total heads to 120 feet
- Capabilities to 200 U.S. GPM
- Built in check valve
- Equipped with 1/2" or 2" female threaded connections, NPT

• 5 H.P. 'S' Series
 2" Ports
 Reg. \$252.00

SPECIAL \$220.50

• 5 H.P. 'S' Series
 With I/C Briggs Engine
 2" Ports
 Reg. \$332.00

SPECIAL \$290.50

• 5 H.P. 'S' Series
 With Honda Engine,
 2" Ports
 Reg. \$482.00

SPECIAL \$421.75

• 'S' Series Pedestal Pump Only 1 1/2" or 2" - Reg. \$138.00... **SPECIAL \$120.75**

Raven Tough Polyethylene Tanks



• SPRAYER TANKS - ALL SIZES AVAILABLE FROM 25 GAL. to 2500 GAL.
 For New Or Replacement

• STATIONARY TANKS - For Liquid Fertilizer Storage

We Also Stock A Complete Line Of:

Teejet
 Sprayer Nozzles And Accessories

Hypro
 Pumps And Accessories

PACER PUMPS

- Sprayer Hose
- Ball Valves
- Nylon Fittings
- Poly Tanks

PAUL B. ZIMMERMAN, INC.

50 Woodcorner Rd., Litz, PA 17543
 1 Mile West of Ephrata
 (717) 738-7350

HOURS:
 Mon., Thurs., Fri 7:30
 Tues., Wed 7:30
 Sat: 7:40

• HARDWARE • FARM SUPPLIES •