

FOCUS



Dixie L. Burris, Membership Development,
Call 1-800-DHIA-1231 for information.
Pennsylvania Dairy Herd Improvement Association
DHIA Service Center, Orchard Road, University Park, PA 16802

REDUCING YOUR SCC CAN SAVE YOU MONEY

Knocking down somatic cell counts can earn bonuses for many dairymen and with the new regulations starting in July could be trouble for some. Don't let quality premiums slip away by ignoring little things. You can improve your cash flow by harvesting the quality premiums.

On the Pennsylvania DHIA report, cows are ranked from highest to lowest. Any cow showing up on the top of the list could be milk last. That way you don't take any risk of infections down the line to other cows.

If you do have high cows there are follow up procedures to specifically identify the problem.

Efforts to keep the SCC low can start before you DHIA sample are taken and the cows are milked. By making sure your cows aren't dirty. Environmental practices can also help to eliminate problems before they get started such as clean cows, clean dry bedding. Proper disposal of manure instead of letting it accumulate.

With cows in a clean, dry environment and also the most importantly the milking time sanitation. Cows should be washed with disinfectant and water with one disposable pa-

(Turn to Page A37)

WHAT CAN YOU SAVE BY REDUCING YOUR SCC ??

No. of Cows	reduced by 1/2		reduced by 3/4	
	lb milk/day	lb milk/day	lb milk/day	lb milk/day
10	15	30	15	30
20	30	60	30	60
30	45	90	45	90
40	60	120	60	120
50	75	150	75	150
60	90	180	90	180
70	105	210	105	210
80	120	240	120	240
90	135	270	135	270
100	150	300	150	300

SCC code	milk less/day per cow per day	SCC range ml (thousands)
4	48.2	17.0
5	47.2	11.0
6	47.5	7.6
7	47.3	4.4
8	45.4	2.0
9	40.1	0.6
N	—	no sample
0	—	0-17
1	—	18-35
2	—	36-70
3	1.5 lb	71-141
4	3.0 lb	142-282
5	4.5 lb	283-565
6	6.0 lb	566-1130
7	7.5 lb	1131-2261
8	9.0 lb	2262-4523
9	10.5 lb	over 4523

YOUR HERD

SCC reduced by half: _____ X 1.5 X 365 X \$ _____ + 100 = \$ _____
cows milk price/cwt

\$ _____

SCC reduced by 3/4: _____ X 3.0 X 365 X \$ _____ + 100 = \$ _____
cows milk price/cwt

\$ _____

Average Production by SCC Code (raw data, PA DHIA, 1985)

code	avg test day milk	% cows involved
0	60.8	4.6
1	57.5	11.0
2	54.6	18.0
3	51.2	21.0

*Trends of SCC codes for each cow and for the herd can be monitored through use of ARIS services, or summary sheets available through your DHIA supervisor or the state extension dairyman.

*The SCC on the DHIA report does not indicate which quarters are infected. Usually only one or two quarters are involved. Infected quarters should be identified by the California Mastitis Test.

*For every cow with an SCC score of 7, it takes 16 or more cows with a score of 3 to lower the herd average cell count to score 4.

IN STOCK NC+ SWEETLEAF™ A Forage Breakthrough

This versatile sorgo/sudan-grass cross outshines the competition with:

High Palatability/ Low Risk due to extra sweetness and low prussic acid.

Fast Emergence/Re-growth — Plants early, handles temperature extremes and recovers fast after cutting.

Top Yields/Conversion — Finer stems with more leaves and tillers produce higher tonnage and TDN per acre.

Better Coverage — Smaller seed size for more acres per bag.

SWEETLEAF fits any intensive management program like a glove. See us today for complete details.

ALSO:
SHORT SEASON SOYBEAN & CORN IN STOCK

America's down to earth seed company



- For More Information Contact:
- District Manager, Rod Dodds 717-436-5514
 - Territory Sales Manager, Elvin Hureh 717-733-3538
 - Territory Sales Manager, Samuel E. Knouse 717-463-2885
 - Arthur Auker 717-865-8827
 - John Auker 717-933-5224
 - Jeffrey Borger 215-381-3785
 - Wayne R. Litzberger 215-847-5563
 - Clarence Mull 717-865-2037
 - Robert Rineer 717-284-4858
 - Aaron Stoltzfus 315-536-4946

LEACOCK SHOE STORE
64 Old Leacock Rd., Ronks, PA
(Between Route 340 & Route 30)
717-768-7440

10% OFF

our already low marked prices on **ALL MENS WORK SHOES**
Including Brand Names Such As:

- Wolverine
- Georgla
- Herman
- Lake of The Woods
- North Lake
- More!

(Special on in stock items only good thru Saturday, June 19, 1993)

NOTICE: FARMERS!!
We have a barnyard acid-resistant, triple tan leather shoe with a one year guaranteed sole!

Hours: Closed Sunday; Saturday 8 AM to 4 PM
Mon.-Wed. & Thurs.: 8 AM to 5 PM
Tues. & Fri.: 8 AM to 8 PM

Martin Concrete

Subsidiary of Martin Paving, Inc.

CONCRETE MIXED AT JOB SITE

METERED DELIVERY

PAY ONLY FOR WHAT YOU USE!



No Waste - We Mix Any Amount
You Need - Mixes Can Be Changed Right On The Job

Mon. Thru Sat. Delivery
P.O. Box 446
Ephrata, PA

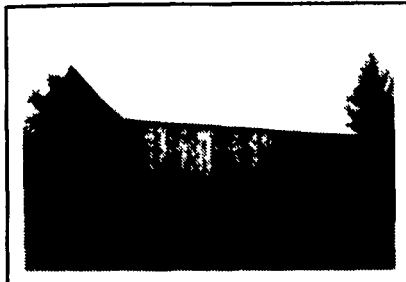
STATE APPROVED DUST OIL FOR BARN YARDS, FARM LANES, ETC.

Ephrata: (717) 733-7915
Lititz: (717) 626-2494
Lebanon: (717) 272-7541

Brecknock Builders

DESIGN • BUILD • CONTRACTORS

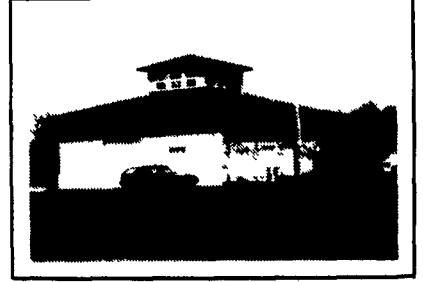
337 Panorama Dr.
Denver, PA 17517



MORTISE & TENON
*NEW & RESTORATION



ALL STEEL
* COMMERCIAL
* LIGHT INDUSTRIAL
* AGRICULTURE



EQUESTRIAN
* RIDING ARENAS
* STABLES, ETC.

FROM DESIGN TO COMPLETION, OUR GOAL IS CUSTOMER SATISFACTION. WE OBTAIN THAT BY QUALITY CONSTRUCTION WITH COMPETITIVE PRICES. CALL FOR MORE INFORMATION
(215) 445-7897