

Kutztown Produce Auction
Hay Auction

Saturday, June 5, 1993
TOTAL LOADS: 8.
MIXED HAY: 80.00-90.00.
WHEAT STRAW: 70.00-76.00.
BARLEY STRAW: 70.00-78.00.

Philadelphia Potato & Onion
Philadelphia, Pa.

Wednesday, June 9, 1993
ONIONS AND POTATOES
--ONIONS DRY: MARKET YELLOW GRANO JUMBO LOWER, OTHERS ABOUT STEADY US#1 OR GENERALLY GOOD QUAL AND COND UNLESS OTHERWISE STATED. NEW CROP Yellow Granex GA 50 lb ctns jbo 10.00-14.00 few 16.00 Grano CA 50 lb ctns jbo 8.00-9.00 fr appear 7.50 rpkz sz fr appear 8.00-10.00 NM 50 lb ctns jbo 8.00-9.00 mostly 8.50-9.00 TX 50 lb ctns jbo 9.00 rpkz sz few 12.00 White TX 50 lb ctns jbo 12.50-13.00 Red CA 25 lb ctns jbo 9.50-10.00 med 7.50-8.00 TX 25 lb ctns jbo 10.00 med 7.00-7.50 Flat Type CA 40 lb ctns jbo 13.00-14.00 mostly 13.00 med 11.00 few 12.00 --POTATOES: MARKET ABOUT STEADY US#1 SZ A WASHED OR BRUSHED UNLESS OTHERWISE STATED NEW CROP Round Red AL 50 lb ctns 11.00-13.00 mostly 12.00 sz B 14.00-16.00 mostly 16.00 occ 17.00 fr appear low as 12.50 AZ 50 lb ctns 13.00 sz B 15.50-16.00 mostly 16.00 CA 50 lb ctns one label 17.00 sz B one label 22.00 FL 50 lb ctns 10.00-12.00 sz B 16.00-17.00 mostly 16.00 Round White FL 50 lb ctns 9.00-11.00 mostly 10.00 sz B 10.00 Long White CA 50 lb ctns 13.50-15.00 mostly 14.00-15.00 OLD CROP Russet Burbank ID bld 10 5-lb flmbgs few 9.00 50 lb ctns 70s 15.00-17.00 mostly 16.00-16.50 80s 15.00-17.00 mostly 16.00-16.50 90s 11.00-13.00 100s 9.00-11.00 mostly 10.00 one label few 12.00 Norkotah CD New Brunswick CDOne 50 lb ctns 70s 10.00 80s 10.00 90s

9.00 100s 8.00 120s 8.00 Prince Edward Island CDOne 50 lb ctns 70s few 12.00 80s few 12.00 90s few 11.00 100s few 9.00 120s few 9.00 WI 50 lb ctns 70s 11.00-14.00 80s 11.00-14.00 90s 10.00 100s 8.00-9.00 Round White CD New Brunswick 50 lb ctns fr cond 5.00-5.50.

Oklahoma City Feeder Cattle

Oklahoma City, Okla.
Wednesday, June 9, 1993
OKLAHOMA NATIONAL STOCKYARDS WEEKLY CATTLE SUMMARY: Compared To Last Week: Feeder steers over 600 lbs. \$1.00-\$3.00 higher; under 600 lbs. \$2.00-\$4.00 higher. All heifers firm to \$1.00 higher. Demand excellent for steers, good for heifers. Trading very active. Buyers less discriminating for grade and quality than at any time in recent memory. Quality of supply plain to average with moderate end attractive. Flesh condition remains fairly attractive, mostly slightly thin to slightly fleshy, end fleshy. Weigh condition gaunt to moderately full. Slaughter cows steady to \$1.00 higher. Slaughter bulls steady. Receipts this week 13,875; last week's holiday shortened period 6,522; last year 8,198. Supply consisted of 78% feeders and stockers over 600 lbs.; 12% calves and light yearlings under 600 lbs.; 10% cows and bulls (mostly pairs and bred cows). Bulk price ranges follow with weighted averages in parenthesis.

Feeder Steers: Medium and Large Frame 1, few 300-325 lbs. \$120.00-\$124.00; few 350-450 lbs. \$109.50-\$120.00; few 450-500 lbs. \$104.00-\$108.00; 500-550 lbs. \$103.00-\$110.00 (\$106.97); 550-600 lbs. \$100.00-\$107.00 (\$102.30); 600-650 lbs. \$96.00-\$101.50 (\$98.68); 650-700 lbs. \$91.00-\$97.00 (\$93.72); 700-800 lbs. \$85.25-\$91.75 (\$88.67); 800-900 lbs. \$84.00-\$88.25 (\$85.99); 900-1000 lbs. \$81.75-\$86.25 (\$82.83). Large Frame 2 Holsteins, 350 lbs. \$95.00; 425-500 lbs. \$86.25-\$89.50; lot 560 lbs. \$83.75; 625-700 lbs. \$76.75-\$81.00; 725-800 lbs. \$75.00-\$75.50; 800-900 lbs.

\$69.75-\$73.25; 900-950 lbs. \$67.75-\$70.25.

Feeder Heifers: Medium and Large Frame 1, few 275-375 lbs. thin \$102.00-\$110.00; few 400-500 lbs. \$95.00-\$105.50 (\$99.07); 500-550 lbs. \$89.75-\$95.00 (\$91.91); 550-600 lbs. \$86.25-\$91.00 (\$88.10); 600-700 lbs. \$84.75-\$88.75 (\$86.64); 700-800 lbs. \$82.25-\$85.50 (\$84.20); 800-850 lbs. \$80.00-\$82.50 (\$80.96).

Slaughter Cows: Cutter, Boning and Breaking Utility Y.G. 1-3 average dressing \$47.50-\$50.25; high dressing \$50.50-\$53.00.

Slaughter Bulls: Y.G. 1 1300-1900 lbs. average dressing \$57.75-\$60.25; high dressing, few high boning \$63.25-\$66.50.

AVERAGE TO HI QUALITY COWS FROM SEVERAL RANCH DISPERSALS PAIRS: MEDIUM AND LARGE 1: 59 head 3-4 year old 800-1100 lb. cows with 100-275 lb. Limousine cross calves \$855.00-\$1105.00, wted avg \$976.00. 162 head 5-7 year old 850-1150 lb. cows with 100-275 lb. Limousine cross calves \$750.00-\$1125.00, wted avg \$975.00. 6 head same as above with 300-400 lb. calves \$1075.00-\$1100.00, weighted avg \$1092.00. 10 head 5-7 year old 750-850 lb. cows with 100-275 lb. Limousine cross calves \$870.00-\$885.00, wted avg \$879.00. 105 head 8-9 year old 800-1150 lb. cows with 100-275 lb. Limousine cross calves \$690.00-\$900.00, wted avg \$801.00.

Frederick Livestock Auction

Frederick, Md.
June 7, 1993

Report Supplied by Auction

SLAUGHTER COWS: 47 HEAD, GOOD DEMAND. UTILITY 50.00-54.00; HIGH DRESSING 54.00-56.75; CANNERS 45.00-49.50; SHELLY 44.00 DOWN.

BULLS: YG#1 1850 LBS. TO 65.25; YG#2 1000-1400 LBS. 57.00-63.00.

FED STEERS: NONE.
FED HEIFERS: NO CHOICE; SELECT 1000 LBS. TO 66.50.

VEAL CALVES: CHOICE, NONE; GOOD 135-180 LBS. 90.00-99.00; CULLS 85-110 LBS. 55.00-65.00; 50-80

LBS. 50.00-58.00; WEAK/ROUGH 48.00 DOWN.

FARM CALVES: HOLSTEIN BULLS #1 90-120 LBS. 160.00-180.00; 80-85 LBS. 130.00-175.00; #2 100.00-130.00; HOLSTEIN HEIFERS #1 90-120 LBS. 170.00-190.00; #2 125.00-160.00; BEEF X BULLS AND HEIFERS TO 160.00.

BUTCHER HOGS: 60 HEAD, 1.00 LOWER. US#1&2 230-260 LBS. 46.75-47.10; 215-260 LBS. #1&3 45.00-46.00; 260-280 LBS. 43.00-44.00; 180-210 LBS. TO 43.50.

SOWS: 300-500 LBS 34.00-36.00; 500-650 LBS. 37.00-39.75.

BOARS: 260 LBS. TO 35.50
STOCK CATTLE: STEERS FEW 300-400 LBS. TO 98.50; HOLSTEIN TYPE 500-750 LBS. 58.00-71.50, BEEF TYPE 700-900 LBS. 70.00-75.50.

HEIFERS: 500-650 LBS. 80.00-88.00, HOLSTEINS 300-500 LBS. 70.00-90.00.

BULLS: HOLSTEIN 500-750 LBS 59.00-66.00; BEEF TYPE 700-900 LBS. TO 72.00.

LAMBS: 120 LB. BUCK AT 62.50; 4 HEAD 145 LBS. AT 47.00.

SHEEP: 150-200 LBS. 20.00-26.00
GOATS: MEDIUM TO 41.00.

PIGS AND SHOATS: BY THE HEAD FROM TESTEDE HERDS 8 HEAD 30 LBS. TO 23.00, 5 HEAD 70 LBS TO 42.50.

HATFIELD QUALITY MEATS WEIGHT AND GRADE PROGRAM-BASE PRICE 51.00 AT PLANT. PLUS BONUS ON QUALITY HOGS

Grantsville Livestock

Grantsville, Maryland
Sat., June 5, 1993

HOGS: TOP BARROWS & GILTS 46.00-48.20; HEAVY BUTCHER 42.00-47.50; LIGHT BUTCHER 38.00-46.00; BUTCHER SOWS 33.00-41.50; FEEDER SHOATS 30.00-52.00.

VEAL: GOOD 80.00-95.00; STANDARD 45.00-75.00; UTILITY 40.00 AND DOWN; BULL CALVES 100.00-145.00;

BEEF CALVES RETURNED TO FARM UP TO 280.00.

SHEEP & LAMBS: GOOD 62.50-68.50; UTILITY 55.00-60.00; SLAUGHTER EWES 18.50-24.00.

GOATS: SMALL 20.00-35.00; LARGE 50.00-78.00.

SLAUGHTER CATTLE: GOOD 72.50-74.50; STANDARD 68.00-70.00; UTILITY 58.00-64.00.

HEIFERS: GOOD 70.00-72.50; STANDARD 62.50-68.00; UTILITY 52.00-60.00.

COWS: COMMERCIAL 45.00-53.50; UTILITY 42.00-44.00; CANNER & CUTTER 40.00 TO DOWN.

BULLS: COMMERCIAL AND GOOD 60.00-68.50; CUTTER AND UTILITY 52.00-55.00.

STOCK-FEEDER BULLS: GOOD 70.00-87.50; MEDIUM 60.00-65.00.

STEER CALVES: GOOD 80.00-92.50; MEDIUM 65.00-72.50.

HEIFER CALVES: GOOD 75.00-90.00; MEDIUM 65.00-70.00.

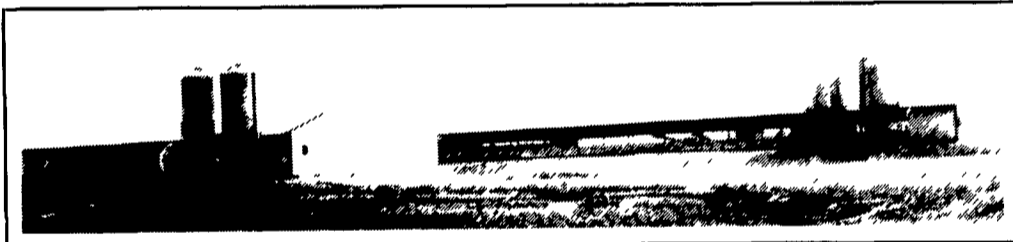
EGGS: LARGE .50-60, MEDIUM 40-50.

Dewart Livestock

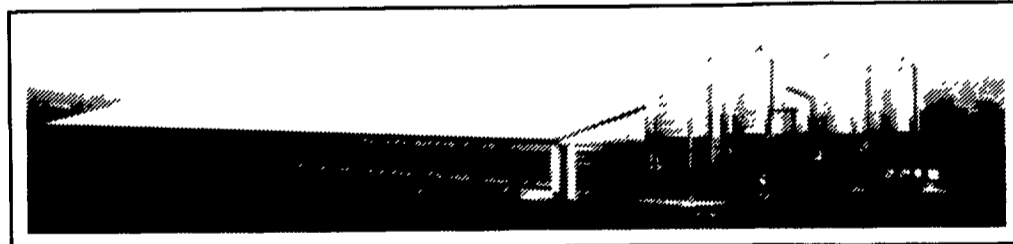
Dewart, Pa.
Monday, June 7, 1993
Report Supplied by Auction
STEERS: 60.00-80.00.
HEIFERS: 60.00-75.50.
GOOD COWS: 47.00-55.00.
CANNERS AND CUTTERS: 40.00-47.00.
BULLS: 55.00-59.00.
VEAL: 90-190 LBS. 99.00-217.00;
70-90 LBS 60.00-99.00
HOGS: 44.00-47.00.
SOWS: 32.00-38.75.
FEEDER PIGS: 15.00-40.00 HEAD

ADD INCOME TO YOUR FARM

Turkey & Hog Contracts Available



This 2-stage facility features a 50'x 215' brooder building and a 50'x 520' growout building designed for 8,000 Toms.



This Hog Finishing Facility features 2 Rooms of 1,000 head each

EXISTING PRODUCERS ARE EXPERIENCING THE FOLLOWING:

- EXCELLENT SUPPORT SERVICE BY CONTRACT COMPANY
- EXCELLENT HEALTH & DISEASE PROGRAM SUPPORT

CONTACT FARMER BOY AG...YOUR PROFESSIONAL COMPANY

- CUSTOM DESIGN • NUTRIENT MANAGEMENT PLANNING
- ASSISTANCE IN PLANNING YOUR FINANCING
- SERVICING BUILDING PERMITS & INFORMATION REQUIREMENTS



FARMER BOY AG. INC.

CALL TODAY 717-866-7565

410 E. LINCOLN AVE. MYERSTOWN, PA 17067

