



# Nothing runs like a Deere™

## TRACTORS

JD 4230 Cab & Quad Range..... Coming In  
 JD 4430 Cab & Power Shift, 1977 Model. Coming In  
 JD 4030, Syncro..... Coming In  
 JD 3020 Dsl w/WF & Cab..... Coming In  
 JD 4440, Cab, Heat & Air, Quad Range, 20.8x38  
 Radial, Excellent..... Coming In  
 Deutz DX130, 4 Post, w/3000 Original  
 Hours..... Coming In  
 JD 2030 Dsl. w/Reverser & 145 Loader... Coming In  
 MM G750 Del., WF & 3 Pt..... Coming In  
 JD 4620 w/R.G. Canopy, Nice..... \$ 9,650  
 Ford 5000 (SOLD Model) 1975 Row Crop  
 W.F. 10 Spd., Excellent..... \$ 8,500  
 IHC 5088 Cab, Heat & Air, 2600 Hrs.,  
 3 Outlets.....\$24,900  
 JD 4320 Cab, Heat & Air w/Direct Axle Duals,  
 Original Paint.....\$13,900  
 JD 1010 Special, W.F. 3 Pt..... Coming In  
 Case 930 Gas W.F.....\$ 4,950  
 JD 2840.....\$11,900

## FORAGE EQUIPMENT

Gehl 1250 2 Row & 7'  
 Pickup Head..... \$ 9,500  
 NI 709 Unisystem w/767 Chopper, 3 Row  
 Cornhead & Pickup Head  
 2100 Hrs.....\$24,900  
 JD 3940 Harvester w/Electric Controls,  
 540 PTO, w/2 Row &  
 5 1/2' Pickup.....\$11,300  
 JD 4 Row Forage Head,  
 Narrow Row..... \$ 9,750  
 JD 216 Forage Wagon w/Gehl  
 Tandem..... \$ 1,750  
 JD 716A Forage Wagon w/12 Ton  
 Chassis..... \$ 5,850  
 JD Cutterhead For Self Propelled  
 Harvester..... \$ 800

## HAY EQUIPMENT

JD 336 Baler w/Ejector..... Coming In  
 JD 350 Sickle (SOLD) Power, 7'..... \$ 1,585  
 NH 488 Haybine, 9'..... Coming In  
 NH 479 Haybine..... Coming In  
 NH 68 Baler w/Thrower..... Coming In  
 NH 315 Baler w/Belt Thrower..... Coming In  
 NH 495 Haybine..... \$ 4,000  
 Gehl 2350 Discbine 3 Yrs. Old..... \$ 4,500  
 Hesston 1014 12' Hydro Swing..... \$ 2,950  
 Hesston 1014 12' Hydro Swing,  
 Non Clog Guards..... \$ 2,950  
 Oliver 520 Baler..... \$ 300  
 NH 273 Baler w/Ejector..... \$ 1,200

## PLANTERS

JD 7000 6R Conservation Planter w/Dry  
 Fertilizer & Auger Fill..... Coming In  
 JD 1240 4R Shoe, No Markers..... \$ 400  
 JD 7000 4R Conservation Planter w/Liquid  
 & Frame Mounted No-Till..... \$ 7,850

## COMBINES & HEADS

JD 6600 Combine, Diesel, Nice..... Coming In  
 JD 643 Corn Head, Excellent..... \$ 7,250  
 JD 215 Flex Head, Black Reel,  
 Excellent..... \$ 5,250  
 JD 443 Low Tin Oil Bath Corn Head,  
 Excellent..... \$ 6,450  
 JD 4400 Dsl., 1977 Model, 1500 Original  
 Hours, Very Nice..... Coming In  
 JD 40 w/Grain Platform..... \$ 1,200  
 JD 4400 Gas Combine..... \$ 4,995  
 JD 6600 Combine (Parts)..... \$ 1,500  
 MF 510 w/Cornhead & 13'  
 Platform..... \$ 3,000  
 JD 213 Flexhead, Yellow Reel..... \$ 1,500  
 IHC 6 Row Cornhead..... \$ 800

## TILLAGE

IHC 450 Plow, 3X, Spring Reset..... \$ 1,450  
 (2) JD 5X Model 1350-1450 Plows, Like  
 New..... Your Choice \$ 1,800  
 JD F145 5 Bt. Plow w/Coulters..... \$ 1,000  
 White 21' Wing Fold Field Cult. Spike Attach..... \$ 2,450  
 JD 3 Btm. 3 Pt. Box Beam Plow..... \$ 450  
 JD 5 Btm. Trip Plow..... \$ 700  
 JD 6 Btm. Trip Plow..... \$ 1,100  
 Pittsburgh 6 Spring Reset..... \$ 6,000  
 Power Harrow..... \$ 350  
 JD 2 Row Mounted Cultivator..... \$ 100  
 JD 16' Drag Harrow..... \$ 800  
 JD 12' Disk..... \$ 400  
 IHC 710 4BT Safety Trip..... \$ 1,850  
 JD 950 12' Roller Harrow,  
 Excellent..... \$ 3,250

## DRILLS

JD 450 2446 w/Press Wheels,  
 1 Year Old..... \$ 7,750

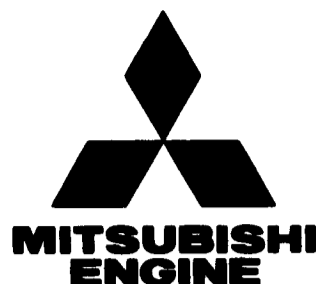
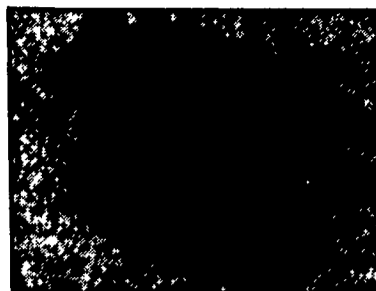
## MISCELLANEOUS

JD 245 Loader w/85" Bucket & Pallet Forks &  
 Independent Valve..... \$ 3,950  
 20.8x38 Snap On Duals..... \$ 850  
 Dual Wheels 18.4x34 Snap On,  
 w/Tires..... \$ 750  
 3 Pt. Green Blade..... \$ 100  
 Woods Belly Mower..... \$ 300  
 Case Rotary Mower..... \$ 100

## WINELAND EQUIP. INC.

RD 2 Rte. 164 East  
 Martinsburg, PA 16662  
 Phone 814-793-2109

## MITSUBISHI DIESELS!



We are a franchised factory direct distributor, there is no middle-man. Therefore, we can sell this premium quality product at volume prices. MITS diesels are smooth, quiet and efficient. They have been almost 100% fault-free in operation.

We stock MITSUBISHI diesels extensively from 15 Hp up to 315 Hp, in both Industrial and Gen-Drive versions.

Have it your way - we custom dress engines to your requirements - from basic engine to fully dressed drop in power unit with radiator mounted.

Peripheral accessories from stock: stub shafts, PTO clutches, hydraulic pump adaptors, skid bases, control systems, etc.

— Check Our Value-Rated Prices —

S3F, 3 Cyl, Diesel, Rated 35 Hp @ 1800 RPM  
 48 Hp @ 2500 RPM.....\$3,500  
 4D31, 4-Cyl. Diesel, Rated 68 Hp @ 2500 RPM  
 800 Lbs.....\$4,150  
 4D31T, 4-Cyl. Turbocharged Diesel, Rated 96 Hp  
 @ 2500 RPM, 825 Lbs. Special Value.....\$4,600  
 6D14, 6 Cyl. Diesel, Rated 121 Hp @ 2500 RPM  
 400 CID, 1275 Lbs.....\$6,100  
 6D14T, 6-Cyl. Turbocharged Diesel, Rated 157 Hp @  
 2500 RPM, 400 CID 1350 Lbs.....\$7,275  
 Warranty: Mitsubishi Policy, Unlimited Hours For 12 Mo.

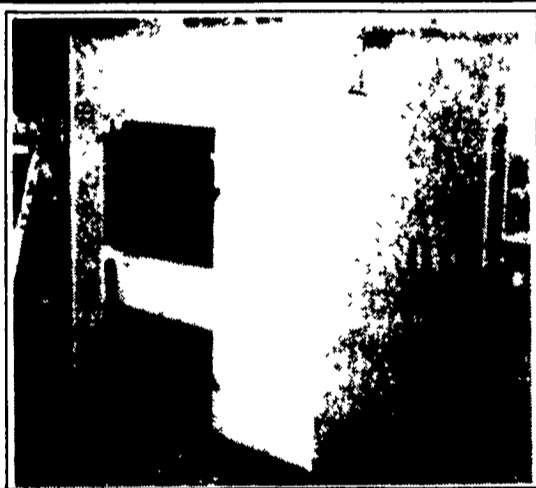
Dress: Loose Power Units With 12V. Starting Equipment w/o Starting/Indicator Panel. Includes Loose Radiator, Muffler

Call Us For Information And Data. Engine Dealer - Discounts Available. Offered in PA, NJ, DE & MD.



46 Pleasant Valley Rd.  
 Ephrata, PA 17522  
 (717) 738-2500

Branch: Irwin, PA  
 (Pittsburgh Area)  
 (412) 864-6969



Model 200MF Stainless Steel. Finished in-plant and ready to ship.

### Get Comforting Heat and Efficiency.

The Mahoning Outdoor Multi-Fuel Furnaces provide thermostat controlled heat by economically burning wood, coal or fuel oil. The furnace is placed 25-100 feet outside the structure to be heated, connections between the furnace and building are buried underground. Wood or coal is the primary burning fuel lasting 8-12 hours in the furnace. For convenient, automatic firing the separate oil burner combustion chamber can provide heat until wood or coal burning is desired. Both Wood/Coal & the Fuel Oil burners are enclosed to heat the same water tank. The purpose of the firebox is to heat the water-filled tank surrounding the outside unit, this heated water is then circulated through underground pipes into your home. A heating coil is installed inside your existing heat system. The thermostat controls the blower which picks the heat off the coils and delivers warm air through existing ducts and registers. There are safeties which eliminate the danger of over-pressurizing the system and automatic shutdown in case of a power failure. The Mahoning Outdoor Furnace can also be connected to an existing hydronic heating system, that operates at 180° F or less, using fin tube baseboard, cast iron radiators or hanging hydronic heaters. Only the thermostat and heating coils are installed inside your home, eliminating open fire dangers, smoke, dust and messy kindling wood boxes. Adjust the thermostat for the Mahoning Outdoor Furnace to your comfort setting and it automatically controls the water pump and blower to circulate heat to your home. You may set the thermostat for your existing heat system to back-up the Mahoning Outdoor Furnace when not in operation or in case the firebox is left to burn out. An Aquastat senses the temperature of the water in the outside unit and automatically adjusts the combustion rate to maintain the correct temperature (normally 180 degrees)

### Hot Water too....!

A Mahoning Outdoor Furnace is a heat exchanger. By running a cold water line from your home to the outside unit, fresh household cold water can be heated and returned to the hot water plumbing in the house. A temporing valve adjusts the hot water at the faucets to a range of 120° to 180°. This boiler system will adapt to any existing plumbing. Heat your pool & hot tub with energy generated by a Mahoning Outdoor Furnace!

For more information see your nearest dealer.



We have a variety of styles & sizes, and one to fit your home/business heating needs!

## OUTDOOR FURNACES

Cut Your Heating Costs  
 With Our Outdoor Furnace!  
 WOOD • COAL WOOD • COAL • OIL  
 - STANDARD MODEL - - MULTI-FUEL MODEL -

Approved for Natural or LP Gas  
 Heat Your Home, Farm or Commercial Buildings with  
 Mahoning Outdoor Furnaces

### Safe - Efficient - Durable

Look at what makes the Mahoning Outdoor Furnace a great purchase...  
 CLEAN. All dirt, dust, fuel and fire is outside. No chance of chimney fire or flue fire  
 ELIMINATES AIR POLLUTION IN THE HOME. Smoke, fuel odors and other causes  
 of allergies are outside the home  
 SAFE FOR MOBILE HOMES. Eliminate a danger that other furnaces contained in a  
 mobile home can cause.  
 NO DANGER OF EXPLOSION. This is a zero pressure furnace  
 ENCLOSED COMPONENTS. The circulation pumps and electrical connections are  
 enclosed in an insulated cabinet on the back of the Mahoning Outdoor Furnace  
 ADAPTABLE. Install our furnace in any forced air heating or hot water system  
 OUTSIDE SHAKER HANDLES. Coal burning and ash removal made easy  
 - CATALYTIC COMBUSTOR -

With the aid of Corning Company, we were able to design a catalytic combustor  
 unit that is proven to provide the following:

- 1) Cut emissions by 90%.
- 2) Improve burning efficiency by 80%.
- 3) Efficiency rating of 83 to 85%.
- 4) Makes furnace more user friendly & neighborhood acceptable.
- 5) No more smoke belching!
- 6) Use 1/3 less wood to heat your home!

Proudly Built in Indiana County Pennsylvania  
**MAHONING MANUFACTURING**

Mahoning Outdoor Furnace Co.  
 R.R. Box 210, Rochester Mills, PA 15771 (412) 286-9959

### FOUR SIZES:

Standard Model - Wood or Coal  
 Multi-Fuel Model - Wood, Coal or Oil  
 Model 100S both supply up to 100,000 BTU's per hour  
 100MF 24 inch long fire box  
 Model 200S both supply up to 200,000 BTU's per hour  
 200MF 36 inch long fire box  
 Model 300S both supply up to 300,000 BTU's per hour  
 300MF 48 inch long fire box  
 Model 400S both supply up to 400,000 BTU's per hour  
 400MF 60 inch long fire box  
 Models and specifications subject to change without notice.

### MAHONING OUTDOOR MULTI-FUEL FURNACE

#### CONSTRUCTION FEATURES:

- 22 ga. steel exterior
- 1/4 in. plate steel firebox
- 3ft. smoke stack of 26 ga. stainless steel (9 ft. opt.)
- 3/16 in. plate steel water tank
- 2 in. foam insulation board cover underneath
- 8 in. legs with skids for easy handling.
- Shaker grates with external shaker handle.
- Large ash pit and large clean-out door for easy ash removal.
- Furnace water level gauge and water temperature gauge.
- Primed and painted finish (stainless steel opt.)
- Burns wood cut 24" to 60" depending on model!



Shaker Grate with Exterior Shaker Handle makes ash removal easy.

LOOK TO MAHONING OUTDOOR FURNACE FOR EASY, WARM INEXPENSIVE LIVING!