

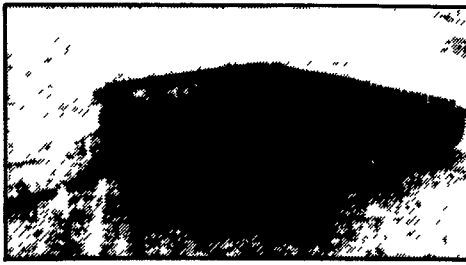
HOOBER SPECIALS FOR JUNE 12, 1993



DEMO...SHELBOURNE-REYNOLDS STRIPPER HEAD

Available 16', 18', 20'

We Are The Dealer In The East. We Sold 12 Last Year, So We Have The Experience!

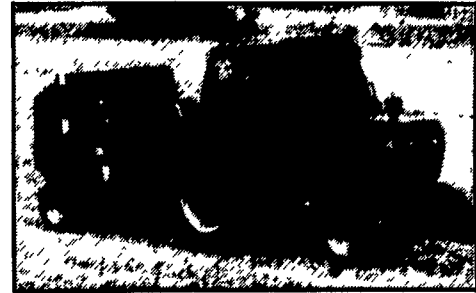


CASE IH, 415 - 12'2" PACKER MULCHER

NEW!

- 19" Notched Rollers
- Vibra-Tine-Teeth
- Cylinder, Jack
- Hydraulic Tooth Control

PRICE- \$5,675



CASE IH 8430 SMALL ROUND BALER

- Makes 900 Lb. Bales- 47" Wide
- Low-Profile Pickup Sweeps The Ground Clean, 52 1/2" Wide
- Hyd. Density Control Maintains Bale Density As You Vary Bale Diameter From 30" To 51"

CALL FOR PRICE!

All New & Used Products
Backed By
Hooper Parts & Service

(717) 768-8231

HOOBER

C.B. HOOBER & SON INC.
INTERCOURSE, PA

Best Buys in Used Equipment

USED TRACTORS & UNLOADERS

Over 200 HP

- Case 2670 - 3 Spd. Powershift, 3 Pt. Hitch, 1000 PTO, Cab w/AC & Heat Over 200 HP (W7620)
- CIH 9130, 4WD, 2540 Hrs., 3 Rem., Powershift, 1000 RPM PTO, 16.9x38 Duals, Cab w/AC & Heat (W7804)
- CIH 4894, 1985, 1700 Hrs., 1000 PTO, 3 Pt. Hitch, 20.8x38 & Duals, Cab w/AC, Heat, Radio (W7617)
- JD 8650, Dual New 20.8x38, 3 Pt., 1000 PTO, 3 Way JD Blade, Quad Range, 3 Rem., Cab, Air, Heat, 3200 HP, (W7671)
- Steiger ST225 Tractor, 4WD, 4 Hyd Valves, 10.8x34 Tires, Clamp-On Duals, Cab w/AC, Heat & Radio, Warranty, 270 HP, CAT Engine (W7109)
- Steiger PTA325 - Just Traded (W7840)
- Steiger ST251, 4 Hyd. Valves, 20.8x38, Cab w/AC, Heat, Radio, 20 Spd. Trans. (W7227)

130 to 200 HP

- AC 8030, 4WD, WFE, 540/1000 PTO, Powershift, 14.9x28 & 18.4x34 w/ Westendorf WL64 Loader & 72" Bucket w/Grapple (W7092)
- Case 2470 Tractor, Diesel, 4WD, 20.8x34 Tires, 1000 RPM PTO, 3 Pt. Hitch (W7837)
- Case 1370 Diesel, WFE, 2 Hyd. Valves, 1000 PTO, 3 Pt. Hitch, 11.00x16 & 20.8x38, ROPS (W7394)
- CIH 7110 MF Tractor, 1990, 3 Hyd. Valves, 540/1000 PTO, 14.9x30 and 18.4Rx42 Tires, Cab w/AC, Heat & Radio, Toolbox (W7342)
- CIH 7120, 2WD Tractor, 1989, 1300 Hrs., 4 Spd., Reverse, 14Lx16.1 and 20.8x38 Tires, 12 Wts., Deluxe Cab, Toolbox (W7547)
- IH 1466, 2WD, 3 Pt. Hitch, Dual PTO, 11.00x16 & 20.8x38, Cab w/Heat (W7824)

- IH 1086, 1977, 2 WD, WFE, 11.00x16 & 18.4x38, Cab w/AC, Heat & Radio, Dual PTO (W7309)
- IH 4366, Articulated, 3 Rem. Valves (W6683)
- JD 4640, 2WD, WFE, 1000 RPM PTO, 20.8x38 Duals, Cab w/AC, Heat, Radio, 20 Front Wts. (W7788)

80 to 130 HP

- CIH 5140, 2WD, Rated 94 HP, Dual PTO, 3 Pt. Hitch, 11.00x16 & 18.4x38, Cab (W7884)
- IH 1256 - Just Traded (W7814)
- IH 666, Hydro, 2 WD, 3 Pt. Hitch, 540 RPM PTO, 7.5Lx16 & 16.9x38 (W7765)
- IH 886, 2 WD, WFE, 3 Pt. Hitch, Dual PTO, 20.8x34 Rear Tires, Cab w/AC, Heat Radio (W7722)
- IH 856 Diesel, Dual PTO, 3 Pt. Hitch, 1 Rem., 10.00x16 & 18.4x38 (W7535)
- JD 2940 Tractor, 4 WD, Dual PTO, 2 Hyd. Valves, 3 Pt. Hitch, 13.6x24 & 18.4x38 Tires w/260 Loader (W7421)
- JD 4010, Dual Hyd. Valves, Dual PTO, 11Lx14 & 18.4x34, 3 Pt. Hitch (W7738)
- MF 2675, Dual Hyd., 540/1000 PTO, 11.00x16 & 20.8x38, Cab w/AC, Heat, Radio (W7833)

Under 80 HP

- Case 580C Backhoe, Diesel, 3725 Hrs., 17.5x24 Rear w/79" Bucket (W7815)
- IH 500C, Diesel, Rops, Rear Wts., Industrial Loader w/65" Deck Bucket (W4885)
- IH 240 Farmall Tractor, NFE, 7' Rear Blade (W7555)
- IH 656 Farmall, NFE, 3 Pt. Hitch, 6.00x16 & 15.5x38 (W7365)
- IH 400 Farmall 1 Rem., 540 PTO, 13.6x38 Rear Tires (W7615)
- IH 400 Farmall Tractor, Gas, 2WD, WFE, 540 RPM PTO, Fast Hitch (W7839)
- IH 706 Tractor, Gas, 3 Pt. Hitch, 18.4x38 Rear Tires (W7519)

USED DISCS

- IH 770 Disc, 12' Offset, Duals, 24" Blades (T7772)
- IH 510 Disc, 16'10" Spacing, 22" Blades (T7542)
- JD 220 Disc, Single-Fold, Flexwing, 18' Cat. 9" Spacing, Blades 20" FR & 21" RR, Scrapers (T6079)
- Krause 1966 Disc, 31' Cut, "Rockflex", New 22 1/2" Notched Blades (T7234)
- Krause 1577A Disc, 18'9" Spacing Front & Rear, 22" Blades Front & Rear, "Rockflex" (T7076)
- Krause 2440 "Rockflex" Disc, 30' Cut, 9" Ft. 10" Rr Spacing, Scrapers (T6170)
- Krause 2416 "Rockflex" Disc 23' Cut Blades Fr. 20", Rr, 22" (T5858)
- Krause 4924 Disc, 9 1/2" Spacing Front and 9 1/2" Rear, 19 1/2" Blades Front and 20 1/2" Rear w/Scrapers (T7661)
- Krause 1450 Disc 24" Blades, 10'8" Cut (T7719)
- Krause 2413 Disc, 13'9" Spacing Front, 10" Rear, 24" Blades (T6131)
- Krause 2416 Disc, 25" "Rockflex", 9" Spacing Front & 10" Rear, "C"-Type Shank (T6495)
- Krause 2416 Disc, 26", 20" Blades Front & 22" Rear (T6924)
- Krause 4921 Disc, 18" Blades Front & 19" Rear (T7564)
- Miller 28' Disc, "Rockflex" w/C-Arms, Hyd. Wings, 21" Blades Front & 22" Rear (T6160)

USED TILLAGE

- IH 55 Chisel, 27', Folding, 10" Spacing Front & Rear, Walking Tandems (T7228)
- IH 55 Chisel, 10 Tooth, 10'5" Spacing, C Shank, Spring Trip (T7329)
- Tailorway 10 Shank Chisel (T7170)
- Brillion 13' Cultimulcher, Duals, Crow-foot Front & Solid Rear, 13'8" (T7644)
- IH 315 Cultimulcher 14" (T7841)
- IH 315 Cultimulcher, 13'2", C-Shank, 14" Packer Wheels (T7330)
- AC 20' Field Cultivator, Folding (T6826)

- Heiniker 23' Field Cultivator, Hyd. Fold, 12' Transport, 6" Spacing, Cushioned C-Shanks (T7311)
- JD 12' Field Cultivator, With 2 Row Tine Harrow (T7825)
- Krause 4133 Field Cultivator, 37' K-Tines (T6863)
- Westgo Row Crop Cultivator, 8 Row, Hyd. Fold & Wings 11' (T6877)
- Wil-Rich Field Cultivator, 30' Swath (T6517)
- Brady Chisel Plow, 10' (T6483)
- Chem Farms CPK 180 Chisel Plow, 17', Folding Hi-Clearance Spring Cushion Shanks (T7134)
- Glenco Soilsaver Chisel Plow, 9 Shank (T7489)
- IH 710 Plow, 4-18" Semi-Mounted, Good Condition (T7512)
- IH 710 Plow, 6-18", Auto Reset, Semi-Mounted (T6813)
- JD 2500 Plow, 7x18" Bottoms, Auto Reset, Coulters (T6320)

USED MISC.

- Myers 6' Snow Blade, Rotating (V6942)
- Westendorf WL64 Loader, 72" Bucket w/Grapple (W7095)
- John Deere #37 Loader w/40" Bucket (W7532)
- Bull 120 Pt. Spreader, 540 RPM PTO (V7813)
- Ficklin Grain Wagon w/8 Ton Pequea Gear, New 12.5Lx15 Tires & Tubes (V7734)

USED HAY & FORAGE

- Hesston 4900 Baler, 4x4x8 Bales, Pickup Rebuilt Last Year, Very Good Condition (U7673)
- NH 269 Baler w/Wisconsin Engine (U7138)
- NH 273 Baler (U7000)
- NI 565 Baler w/Wisconsin Engine, Steel Whls., Engine Overhauled (U7141)
- Unverferth RA220 Bale Wrapper, 3 Pt. (U5605)
- NH 499 Haybine, 12' Cut, Hydro Swing, 3" Knife w/Guards (U7899)
- NH 499 Haybine w/New Rolls (U7310)
- Bush Hog 207 Mower, 3 Pt. (U7172)
- Woods 120 Mower, Pull Type (U7509)

- Woods C114 Mower, 9 1/2" Cut, Belt Drive, 540 PTO, Good Condition (U7529)
- Woods 120 Mower, 10' Offset (U6970)
- IH #60 Shredder, 6 Row (U7551)
- CIH 75 Windrower, 18' Pull Type (U6989)

USED PLANTERS AND DRILLS

- Great Plains 12' Drill, No-Till, 1985 Model, New Disk Openers in 1992 (V7685)
- Great Plains 15' Drill w/Pull Caddy, Needs Blades in Front, 4" Press Wheels (V6677)
- IH 5100 Drill, 20x6, 400 Acres, Press Wheels, Cylinders & Hoses, s.b. Special (V7799)
- JD 750 Drill, 15', No-Til, 7 1/2" Spacing, Plateless (V7640)
- JD 750 Drill, 7.5" Spacing, Hyd. Opener Lift Cylinder, Press Wheels (V7871)
- JD 530 Drill, 30', 2 Section Folding, 2x13 Press Wheels, Electric Clutch (V7892)
- Deutz Allis 325 Planter, 4 Row, New Paint, Dry Fert., 4" Ribbed Press Wheel (V7744)

USED COMBINES

- IH 205 Gas w/2 Row Cornhead, & Rigid Platform (U6749)
- JD 7720, 1981, Hydro, 4WD, 30.5x32 & 16.7x26 w/Chopper (U7154)
- JD 6620 Sidehill, 1984, 2365 Hours, (U7423) w/215 Flex Platform (U7424)
- JD 6600 Sidehill, Hydro, 28Lx26 w/215 Flex Platform & 643 Cornhead (U7474)
- JD 6620 Titan II Side Hill, 1988 2200 Hrs., 4WD w/Chopper, 915 Flex Platform (U6687)
- JD 6620, 1981 3180 Hrs., Hydro, 28Lx26 w/215 Platform (U7343)
- JD 6620 Sidehill, 2 WD, 28Lx26 & 11.00x15, AHHC, Cab w/AC & Radio (U7065)
- MF 860, 1981 w/18' Flex Platform, 2WD (U6668)

All New & Used Products
Backed By
Hooper Parts & Service

(717) 768-8231

HOOBER

C.B. HOOBER & SON INC.
INTERCOURSE, PA

case i

case i