

New Arrival

R62 Gleaner Combine
w/630 Cornhead & 15' Flexhead

NEW EQUIPMENT

Kuhn Hay Equip.
Agco-Allis 7600 4WD Cab
Agco-Allis 5670 4WD
Deutz Allis Disc 12'2" and 13'6"
500 gal. Cagle Field Sprayer
Kidd Bale Choppers
Deutz Allis 1500 Min-Till 9 Shank

USED EQUIPMENT

Marliss 10' no-till drill
(3) Used AC 6R no-till corn planter

Call For Demo
9650 Power Shift
Agco-Allis

510 MF Combine Diesel w/23.5 tires,
cab, AC, Model 1143 corn head,
13' grain head, \$8,000

Artsway Silamix Feed Wagon
In Stock Now.

COMPARE OUR PRICES
ON WOODS MOWERS

B. EQUIP. INC.

8422 Wayne Highway
Waynesboro, Pa. 17268
717-762-3193



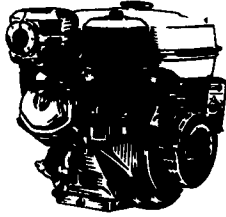
WANTED

Used 100 Gallon Fuel
Oil Tank, Must Be In
Good Condition.
717/786-2839

HONDA
Power
Equipment

Engines

Replacement Power You Can Trust



G100 2.2 HP	\$222.00
Gx120 4 HP	\$260.00
Gx160 5.5 HP	\$299.00
Gx270 9.0 HP	\$474.00
Gx390 13 HP	\$538.00
Gx610 18 HP	\$908.00
Gx620 20 HP	\$1020.00

Postpaid
Pa. Residents Add
6% Tax - Send Check
With Order To:

**Blue Mt. Small
Engine Serv.**

Three Sq. Hollow Rd.
Newburg, PA 17240
717-423-5358

Dealer Price Available

**FORRESTER FARM
EQUIPMENT LTD.**

1475 Orchard Rd. Chambersburg, PA 17201

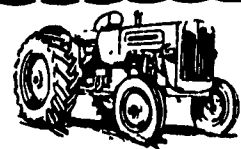
Phone: 717-263-0705
Sales - Parts - Service



BEST BUYS IN USED TRACTORS

- | | |
|---------------------|---------------------|
| Ford 8N | NH 775 Skid Loader |
| Ford 600, 5 Spd. | w/1,600 Hrs. |
| Ford 4000, 1964 | NI Spreader |
| Diesel | Ford 14' Disc, |
| Ford 4000 | Like New |
| Ford 4630 2WD | 10' Ford Field |
| Shuttle-Shift, Low | Cultivator |
| Hours | Ford 3 Btm. Plow |
| Ford 5610 w/Cab, | Ford 10' Disc |
| 4WD | 10' Brillion Culti- |
| Ford 7700, 2WD w/DP | mulcher |
| Ford 7910, 2WD | Grove 14' Forage |
| Ford 8210, 4WD | Wagon |
| w/Cab & Air | NH 495 Haybine, 12' |
| Ford TW30, 2WD, | NH 499 Swing |
| Cab & Air | Tongue Haybine |
| Ford 8730, Power | JD 24T Baler |
| Shift, 4WD | w/Kicker |
| w/Cab & Air, | NH 770 Chopper |
| 1,200 Hrs. | w/Hay Head & |
| Approx. | 2 Row Corn |
| JD 3350, 4WD | NH 770 Chopper & |
| w/Cab & Air, | Grass Head |
| 95 H.P. | NH 1499 Haybine, |
| JD 4430 | 450 Hrs. |
| New 6 Row White | Tye No-Till Drill, |
| Cultivator | Grass & Broom |
| NI Spreader | Century 45' Boom |
| IHC Grain Drill | Spray, 530 |
| JD 122 Forage Box | Gallon |

Hours: 8:30-5:00 Mon. Thru Fri.
8:30-12:00 Saturday



JD 4240, Power
Shift, 4 post roll
bar w/roof; JD 90
skid loader w/46"
bucket; Int. Cub
w/equip.; 540A Ford

w/full cab. Int. 444, Farmall Super C, 2000 &
8N & 9N Fords; Int. 606 Diesel Utility, Int.
140's, Super A, 140's w/Mid-Mount Mowers,
AC-B with Mid Mount Mower, AC CA w/plow
& cultivator; J.D.-AR, 3400 Ford w/Loader, MF
50C w/Loader, MF-20 w/Loader, 445 Ford w/
loader; New Arps 730 - 3 pt. Backhoe, Case 530
backhoe & loader; N.H. LB620 Backhoe &
Loader w/3 pt. Hitch Attachment, Maudlin
Blacktop Paver w/Deutz Diesel & 8' Sceded,
Huber F-1500 Grader, A.C. - 6G Crawler Load-
er, Cat 955H Crawler Loader, Cat 977 H Crawl-
er Loader, 1987 Superior 22 Ton Tag-A-Long
Trailer w/Air Brakes & Hyd. Ramps, 1981 Int.
Grain Truck Model S1800 w/DT 466 Diesel &
16' Body w/Metal Sides, New 3 pt. Fert.
Spreader, 3 pt. Stone Rakes, 3 Pt. Box Scrapers,
Regular & Heavy Duty 3 pt. Scraper Blades,
Heavy Front Blades, New Woods Rotary Mow-
ers 5' to 15' in Stock at Special Prices, Buy Now
& Save! Deutz Allis 7' Disc Haybine, NH 27
Silo Blower.
New 18' Bale Body & Gear, J.D. 410 Round
Baler, J.D. Model A2600 4 Bt. Semi Mt. Plow,
Ford 4 Bt. Auto Reset Semi Mt. Plow w/New
Bottoms, New Brillion 12' Cultipacker; Int. 370
Transport Disc 12'; New Yarnell 2 Axle -
10,000 GVW Tag-A-Long Trailer, New 16' 2
Axle Livestock Trailer - 7000 GVW, Large
Selection of New, Used, & Reconditioned
Equipment & Tractors.

**YORK COUNTY FARM &
INDUSTRIAL EQUIPMENT
CO., INC.**

Box 222 EMIGSVILLE, PA
(717) 764-6412 OR (717) 764-5115



**WISCONSIN HEAVY
DUTY ENGINES**

REPLACEMENT ENGINES
REPLACEMENT SHORT BLOCKS

Trade-In Available - Large Parts Inventory
Complete Rebuilding

JUNE DAIRY MONTH SPECIALS

WISCONSIN ENGINES & SHORT BLOCKS

VH4D 30 HP, Elect. Start	As Low As \$1595.00
TJD 18 2 HP Elect Start	As Low As \$1410.00
WI230 5.5 HP 6-1 Reduction	\$225.00

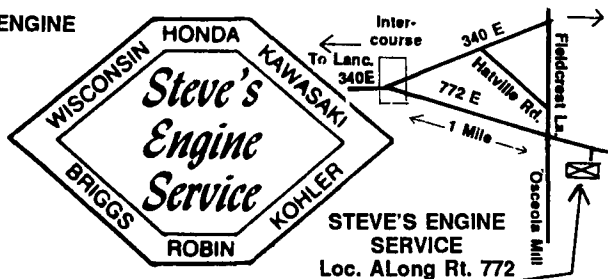
Rockford & Twin Disc Clutch Parts

Honda SPECIAL 2.2 HP to 13 HP Engines 2200 to 5000 Watt Generators	Kohler SPECIAL 8-23 HP Engines & Short Blocks, 20 HP As Low As \$895.00
---	--

Check Our Prices & Save Up To 40% Off

We Also Sell & Service The Following: Tecumseh - Honda
Briggs & Stratton - Kawasaki - Wisconsin Robin - Onan
Industrial: Ford & Continental Engines, Honda, Lincoln,
Hobart, Miller Welders - Parts & Service

FOR ALL YOUR ENGINE
NEEDS CALL:
717-768-7669
3918 E. Newport Rd.
Gordonville, PA 17529



U.P.S. Daily
Pick-up & Delivery
Available

**STEVE'S ENGINE
SERVICE**
Loc. A Long Rt. 772

Best Buys in Used Equipment

USED EQUIPMENT

IH 5288 w/cab, MFD, approx. 2,500
hrs., new rubber, both PTO
Case IH 2096, MFD tractor w/cab, 285
hrs., excellent condition

- Westfield 8"x25' utility auger
- Brillion 14' single roll packer w/
transport, excellent condition
- JD FB177 18x7 grain drill
- IH 110 Forage box w/triple beaters
- (2) Badger forage boxes on tandem
gear
- Farmall M

- JD 2840 tractor w/cab & 260 loader
- (2) NH 489 mower conditioners
- IH 19' 3 pt. vibra shank harrow
- Brillion 16' transport harrow

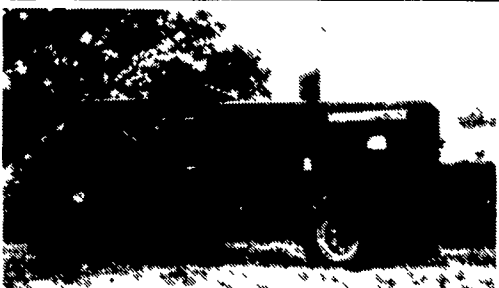
BANGOR IMPLEMENT

6 Flicksville Rd., Bangor, PA 18013

215-588-5922 or 215-588-5924



MID STATE TIRE CENTER



AC 185
80 HP, Runs Good
\$3,800

- Vicon 1211 4x5 round baler, like new\$6,000
- Tree Planter, old but works\$450
- JD 300 TLB, diesel\$4,000
- JD 2140 (same as 2750) cab, 4x4\$12,000
- Ford 7710, 4WD, 80 HP, rough\$7,800
- Woods B320 20' Batwing\$3,800

410-429-1927



FIRESTONE

19Lx16.1 10 ply	\$275
750x22	\$165
13.6x26 6 ply	\$235
18.4x30 6 ply	\$285
30 5Lx32 8 ply	\$890
18.4x34 6 ply	\$355
20 8x34 8 ply	\$545
18 4Rx34 8 ply	\$465
15 5x38 6 ply	\$275
20 8x38 8 ply	\$539
20 8Rx38 10 ply	\$765
20 8Rx38 8 ply	\$495



GOODYEAR

13 6x24 8 ply	\$290
16 9Rx28 10 ply	\$375
14.9x28 6 ply	\$195
16 9x30 6 ply	\$265
18 4x30 6 ply	\$300
18.4Rx38	\$490
20.8Rx38	\$685



ARMSTRONG

23.1x34 8 ply	\$690
24 5x32 10 ply	\$725
30 5Lx32 10 ply	\$950
28Lx26 10 ply	\$890
18 4x38 8 ply	\$425



ALLIANCE

14.9x24 6 ply	\$219
16.9x24 6 ply	\$239
18.4x34 R/C	\$495
20.8x34 R/C	\$690
14.9x38 6 ply	\$275
18.4x28 6 ply	\$350
(1)24.5x32 12 ply	\$725
30.5Lx32 12 ply	\$1,090
18.4Rx38	\$485
20.8Rx38 8 ply	\$665
20.8Rx42	\$765



WE MOUNT TIRES
IN N.Y. & PA
Duals, Wheels &
Rims for:
Manure Spreaders
Wagons
Tractors

WAGON GEARS
12 Ton \$1,290
10 Ton \$700
8 Ton \$625
6 Ton



Call For Sizes
Not Listed

1-800-548-1884 or 315-539-2764