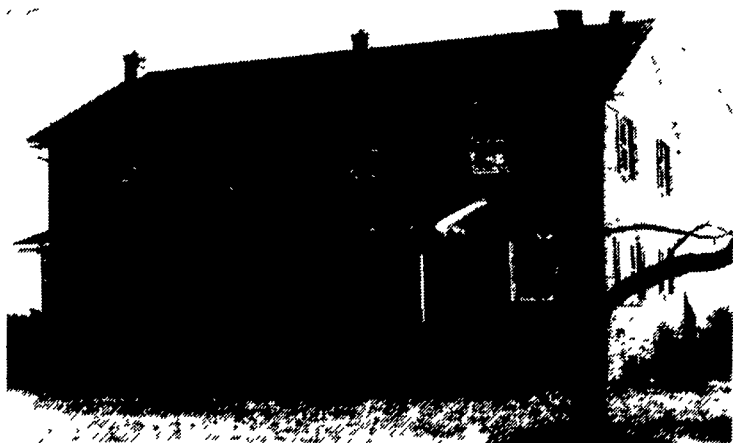


CUMBERLAND COUNTY 2 FARMS - PERFECT FOR HOG OR POULTRY CONFINEMENT



151 Acres- 130 T.A., 20 pasture, 1 wooded, high state of cultivation, gently rolling - shaly loam soils, 54x120 equip. shed, bank barn w/40 cow barn attached, 16x60 & 12x50 silos, 4000 bu. grain bin w/drying fan, stream & pond in pasture, 5 large BR dwelling, approx. 13 yrs. old - modern kitchen 2 baths.



152 Acres- 115 T.A., 25 pasture, 10 wooded, slightly rolling, dairy barn w/40 comfort stalls, 25 free stalls w/pipeline & barn cleaner. New equip. shed- 36x64, 16x60 & 12x40 silos, 2 1/2 story frame dwelling, 5 BR, 1 1/2 bath, modern kitchen & bath.

Negotiable Possession On Both Farms

MAHLON OBERHOLTZER AGENCY

Your Central PA Farm Broker
Smoketown, PA 17576 (Lanc. Co.)
717-392-1177



This is the farm you picture when you think of the enduring family farm. 100 tie stalls in 4 rows for easy conversion from the existing double-5 if you prefer. Two story country farmhouse w/four bedrooms; two silos; heifer barn; and 240 acres with approx. 200 gently rolling tillable acres plus fantastic views complete the package. All well kept on low-traffic road.



BEARD REAL ESTATE
403 E. Main St., Elkland, PA 16920
(814) 258-7117
Eric L. Beard, Broker
Mary C. Heltzenrater, Sales Associate

THE REAL ESTATERS OF MANSFIELD

1671 S. Main St., Mansfield, PA 16933
(717) 662-2138 - Evening (717) 662-2363

DAIRY FARM - IMMEDIATE POSSESSION

Bradford County dairy complex. Above average barn set up for 102 cows in tie stalls served by 2" S.S. pipeline. 1,250 gallon bulk tank. 2 silos and unloaders. 2 outbuildings. 123.74 acres w/more lease ground available. 8 rm., 4 bdrm home. \$199,500. M-154. Immediate possession, would consider lease at \$1,950 per month.

FIELDS, FOREST AND SCENERY!

This 2 story, 4 BR home is in a beautiful setting. Close to Elmira, Corning and Lawrenceville, and located in PA. Lots of room for the kids to roam on over 63 acres of fields and trees. Over 1000' frontage on both sides of the road. Price reduced to \$124,900 and the sellers have said they'll negotiate! M-205

AFFORDABLE MODERN DAIRY FARM

72 Holstein tie stalls on pipeline and 26 heifer tie stalls. Up to 120 head capacity under 1 roof w/young stock. 2 barn cleaners, feed 1 year manure pit. 20x60 silo. Approx. 111 acres all tillable or in intensive pasture program. Adjoining 120 acres for lease. 10 room, 4 bdrm farmhouse, \$100,000, 5% interest FmHA mortgage. Immediate possession. Tioga County near Mansfield, PA. Just \$159,900. M-121.

DAIRY/BEEF OPERATION

In Tioga County. Approx. 115 acres of river bottom ground included with tremendous set of buildings. 35x152 starter barn, 70x226 main barn set up for 400 head capacity. 30x120 feeder barn, 24x112 finishing barn, 50x150 shop/machine shed. 16,000 bushel grain storage. 2 silos, 950,000 gallon liquid manure storage tank, much more w/8 rm., 4 bdrm. house for \$195,000. Additional 105 acres and \$70,000 ranch home over finished bsmt...for package of \$299,900 M-224.

\$9,900 HUNTER'S PARADISE! \$9,900

10 surveyed acres on wooded mountaintop. Close to St. Forest. Nice frontage on two private association maintained roads. Flaming foliage abounds as property is covered with hardwoods. Tioga County, PA near Blossburg. M-976.

REDUCED/OWNER TERMS

Small dairy operation in Farmington Township, Tioga County. Approx. 100 acres of tillable, pasture, woods and pond w/long gravel road frontage set up to mile w/pipeline. Poor house w/well and septic. Was \$94,900, now \$74,900 w/\$14,900 down, balance of \$60,000, 10 years, 8% interest. M-153.

NORTH CENTRAL PA

Operating dairy farm, 150+ acres, nice 52 stall cow barn, 2 silos, good 2 sty 4 bdrm home, centrally located between Mansfield, Elmira, and Troy, asking \$185,000 #1237.

148.41 acres 40 ac. open land, bal. wooded, exc perc site, Jackson Twp., asking \$120,000 #1241.

Own your own business. Meat processing plant & equipment. All set up to go, 11+ acres w/home included, 3 bdrms, 2 baths, frmlly rm, Lr, Dr, Great setup. Only \$135,000 #1225.

Dairy Farm, 100 cow barn + 150 river bottom acres, barn, milking parlor, 5 silos, machine shed, hay storage, main house has 3 bdrms, 2 baths, garage, in-ground pool + more, tenant house 4 bdrms, 1 1/2 baths, etc. Much more on this once in a lifetime offering, asking \$340,000 #1215

Koch REAL ESTATE AND INSURANCE
9 Cone Street
Wellsboro, PA 16901
717-724-3500
REALTOR REAL ESTATE AND INSURANCE

CENTRAL VIRGINIA

GREAT LIVING! LOW TAXES.

"Merequeen Farm", 320 beautiful acres, great ranch home overlooking James River, guest cottage, pool, Mgr's home and much more \$695,000. Video upon request.

308 acre cattle farm, ranch home, 5 acre lake, 165 ~~UNDER CONTRACT~~ acres grass. Great buy \$335,000

Retirement - 59 Acres, 45 in pasture. Nice ranch home, good outbuildings, beautiful lake. Great Buy at \$197,000.00.

382 acres, 228 acres open, outbuildings, \$389,000.

Secluded 308 acres, 148 acres pasture. \$175,000.

36.5 acres retirement tract. \$29,200.
"ON GOLDEN POND"

Nice 7 room, 2 bath log home overlooking a 12 acre lake on 72.5 acres. \$185,000.00.

Many Other "GREAT BUYS" on Farms - Homes & Land.

"FREE Brochures upon request"
Contact "Mike" or "Kip" Lafoon

Coldwell Banker

Lafoon Realty, Inc.

720 Oak Street, Farmville, Virginia 23901
1-800-767-6191 or 804-392-6191
After 5, Mike 804-392-4375,
Kip 804-392-3002

**COLDWELL
BANKER**

LAFOON REALTY, INC.



OTHER FARMS AVAILABLE

Please Call and Tell Us Your Preference

PAUL M. LONGACRE

REAL ESTATE BROKER

Rt. 100 Hereford, PA 18056

Ph: 215-679-5919

Paul Zelsloft, R.E.S. (717) 437-2305

TOGA COUNTY

• 182 acres m/l dairy farm, 53 tie stalls with 2- 16x55 concrete stave silos, shop 30x30, horse barn 30x52, 2 1/2" S.S. pipeline milkers, 500 gal. bulk tank, bull pen, heifer barn. 2 story frame house with aluminum siding, "big" modern farm kitchen with solid oak cabinets, LR, DR, laundry, office, wall to wall carpet throughout, 3 BR, 2 full baths, plus attic, \$200,000. Cattle, Machinery At Extra Cost.

BRADFORD COUNTY

• 116 Acres Dairy Farm, Approx. 80 Tillable, Rest Pasture, Lg. 2 Story Frame House, Modern Family Kitchen, Lg. LR, Family Room, 2 Baths, 8 BR, Laundry, W/W Carpet, Lg. Dairy Barn With Double High Trashing Floor With 1 Story Addition, 70 Tie Stalls, Pipeline Milker With Lg. Bulk Tank, 3 Silos, Harvestore Grain Silo, Lg. 4 Bay Garage 36x60 Metal, \$225,000.

• 120 Acres, 65 Tillable M/L, Pasture 40 Acres, Remainder Wooded. Containing 3 Houses, (1) 2 Story, 8 Room, 1 1/2 Baths, w/Attached Garage, (1) 1 1/2 Story, 7 Room, 2 Car Detached Garage, (1) 1 Story, 3 Br., Bath, Detached Garage. 44 Stall Cow Barn, Milk House, Pipeline Milker. All Modern Conveniences. 2 Concrete Silos. Asking \$250,000. Can Be Subdivided.

UPPER MONTGOMERY COUNTY

• 80 Acre Mill/Farm w/Road Frontage, Features 76,000 Bushel Storage Grain Elevator, Dryer, Tractor And Trailer Scale, Mill And Large Heavy Storage Barns. Stone Double Farmhouse, \$625,000.

BERKS COUNTY

Bally, Commercial Property, 4 Apartments, Paved Lot, 12,000 Sq. Ft. Parking Space, 2 Story Block, Stucco And Frame Building, Video Store On 1st Floor. 1st Floor, 2BR, LR, Modern Kitchen Apartment. 2nd Floor, 2 Apartments, 1BR, LR, Modern Kitchen. Basement Houses Commercial Washer/Dryer, Plenty Of Storage Space. Very Good Income Producing Property For Only.....\$225,000 Or \$190,000 Without Video Equipment.

BEDFORD COUNTY

• 186 Acres M/L, 105 Tillable, 15 Acres Pastureland, 40 Acres Woodland, Gently Rolling Ground. 2 Houses, #1- 2-Story 4 Bedroom, Modern Eat-In Kitchen, Living Room, Dining Room, Full Basement; #2- 1-Story, Full Basement, Patwell House, 3 Bedrooms, Modern Kitchen, Dining Room, Living Room, Breezeway. 80 Cow Free Stall Barn, 120' Long x 45' Wide, 50x60 Barn w/28 Stanchion, Universal Pipeline w/6 Milkers, Automatic Washer, 1000 Gal. Mojonner Bulk Tank. 3 Silos: 20x68 Poured Concrete w/Jamesway Unloader, 16x50 Stave Silo w/Acorn Unloader, 12x40 Concrete Stave Silo. 14x20 Garage And Workshop, Grain Storage & Double Corn Crib, 2 Car Garage Below. Add'l. Oversize 2 Car Garage. \$255,000.

MONTOUR COUNTY (Between Washingtonville & Danville)

• 133A m/l a prestigious estate farm has everything to offer. Location, privacy, a lg. frame 4 br. house w/2 full baths, modern kitchen and dining combination, den, LR w/fireplace, picture window overlooking 3 acre pond, 100 tillable acres, large bank barn equipped for beef & hog, large pole shed for equipment, located in good farming area. Shown by appointment only. Contact Paul Zelsloft, 717-437-2305.