

WIMPLE ASSOCIATES

140 COW STONE BARN: 477 acres in prosperous dairy country near Richfield Springs, 300 acres tillable loam. Riico rafter pipeline barn with (2) 18x50 silos. Dry stock barn for 35 head. Good 12 room home could be used as two family; has 2 kitchens, 2 baths, hot water heat. \$320,000. Cattle & equipment available. **PRETTY HILL COUNTRY FARM** at super low price. 77 acres near the Pennsylvania border; about 30 acres woods with balance open. Large stream in rear. Nice 8 room home has 3 bedrooms, skylights, wide board floors, large maples in yard. Good 35x40 barn for stock. **REDUCED FROM \$87,000 to \$63,000.**

MORT WIMPLE ASSOCIATES
SLOANSVILLE, N.Y.
518-875-6355
FAX: 875-6749
FREE DAIRY CATALOGUES

Northumberland Co.

170 Acre, 90 tillable with brick house and barn, (White Deer Settlement) \$315,000 quick sale.

Lancaster Co.

Farmette in Canoy Twp. 1800 sq. ft, 4 br farmhouse, 35x60 2 story barn with 3.4 acres. \$134,900 poss. subdivision.

Juniata Co.

Two 19 acre m/l parcel, part wooded, \$45,000
Two 1 acre building lots, Richfield, Pa. \$17,500.

Northern Dauphin Co.

Very special gentleman farm. 3 Br, restored 1834 stone home and bank barn, very private setting with your own pond & trout stream on 82 acres, 55 open, bal. wooded.

I need farms in the Amish areas of Dauphin, Perry, Lycoming and Northumberland Counties.

Call Harry Zimmerman

Office: 717-299-4885
1-800-472-2641
Car: 717-575-2542
TOWN & COUNTRY REALTY

DOWNSTATE ADS

TIAGA COUNTY. Getaway Cabin on 10 wooded acres. Cool quiet area under hemlocks. Spring fed stream. Propane Appliances, gasoline generator and walk to state lands. Woodstove included. Some owner financing. Clymer Twp. \$30,000.

TIAGA COUNTY. Land. 19.29 acres. Cowanesque Lake Area. Borders New York. All wooded w/hardwood timber. Perked Outstanding hunting/fishing area. Lawrence Twp. \$31,350.

POTTER COUNTY. New home on 4.85 acres. Sets between Pine Creek and Hanky Panky Road. 5 BR, 2 baths, Large oak kitchen, att. 2 car garage w/workshop. Pike Twp. \$145,000.

POTTER COUNTY. 72.68 Wooded Acres. Borders 8000 acres of State Game Lands. Big Pine Creek close too. Includes forgotten A-frame that needs work. Pike Twp. Westfield, \$45,000.

TIAGA COUNTY. 181 acres. 50% wooded. Views. Good fields. 5 year old modular home. Let the timber cut the debt. Some owner financing. Chatham Twp. Asking \$155,000.

TIAGA COUNTY. 33.8 acres. Mostly wooded with some marketable timber. Secluded. Two trout streams and a golf course nearby. Deerfield Twp. \$37,000.

ENDLESS MOUNTAIN REAL ESTATE
P.O. Box 157, 107 E. Main Street,
Westfield, Pennsylvania 16950
(814) 367-5380 R.E.
Fax: (814) 367-5757

138 Acre Dairy Farm in Swengel, five miles west of Mifflinburg. Farm buildings include 32x78 free stall barn, 20x40 chicken house, 24x48 implement shed, 40x78 2-story barn, 13x22 milk house with pipeline milking in place, 500 gallon milk tank, 40x80 cow barn, bottom load silo, plus pig barn, corn sheds, etc. House is in excellent condition and features 4 bedrooms, 1 1/2 baths, living room, dining room, 2 car attached garage plus much more.

COLDWELL BANKER
PENN ONE REAL ESTATE
Lewisburg, PA
(717) 524-7500



YORK COUNTY - 93 acre dairy farm. Bulk milk tank, s.s. pipeline, 5 BR home with 2-car garage, excellent condition. Land in high state of fertility. A must see.

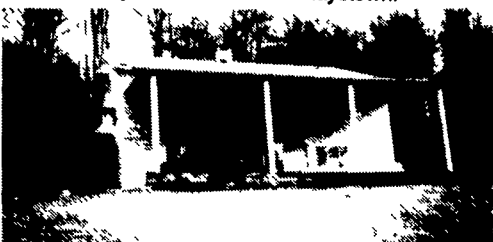
PERRY COUNTY - 212 acre general farm ideal for steer, chicken or hog farm.

CUMBERLAND CO. - 156 Acres dairy farm, double 6 parlor. 108 free stall barns, 4 stave silos w/unloaders. 5 BR farmhouse. Reasonable taxes and reasonably priced.

These farms are priced between \$250,000 & \$325,000. You must see them to appreciate.

RED ROSE REALTY
Call Dale Land's, Farm Specialist
717- 626-5875

Waterfall, Pa.-Fulton Co.-\$69,900
Two BR, large family room, joins Pa. Game Lands on 9 acres, only minutes to Lake Raystown.



Manns Choice, Pa. Bedford Co. - \$140,000
143 acre farm with old dwelling and barn with a panoramic view. Good hunting and retreat property.



Needmore, Pa.-Fulton Co. \$198,000
119 acres-Approx. 70 tillable, trout stream, good hunting, Downstairs newly renovated. At end of twp. road, private with nice views of mountains. Many outbuildings



Orblsonia, Pa.-Huntingdon Co. - \$159,000
Immaculate home on 15 acres, 5 BR, in-law qtrs., a second guest house, trout stream, good hunting-Great mountain retreat property. Very remote.



RE/MAX COUNTRY REALTY
203 L.W.E. McConnellsburg, Pa 17233
(717) 485-5911
Ronald L. Richards-CRS, GRI
(717) 485-4103

FOR GARAGES, HORSE BARN, GAZEBOS, STORAGE BARN, COMMERCIAL BUILDINGS, ETC.

Cupolas and Weather Vanes

REDWOOD BIRD FEEDERS

MANNIE'S WOOD SHOP

58 Queen Rd (1/4 mile S. of Intercourse)
Gordonville, PA 17529

Ventilate and Decorate
Cupolas Manufactured & Custom Built

COME & SEE OUR INVENTORY ON DISPLAY

HERITAGE REALTY GROUP INC. MLS

1525 Science St., State College, PA 16801

814-231-0101

"FULL TIME, FULL SERVICE, EXPERIENCED."

Contact: **DON C. MYERS**
Residence: (814) 422-8111
KENNETH L. HALL
Residence: (814) 387-6273
BONNIE DARLINGTON
Residence: (814) 364-9826

FARM & RURAL PROPERTY DIVISION

CENTRAL PENNSYLVANIA FARMS, FARMETTES AND LAND MONTOUR COUNTY

#6161FA DAIRY FARM LIMESTONEVILLE AREA, \$285,500 OPTION 1 (OPTION 2 \$349,500)\$425,000 OPTION 3

- 50 acres w/48 acres tillable, 2 acres site (Option 1)
- 97 +/- acres w/90 acres tillable, 5 acres woodland, 2 acres site. (Option 2)
- 124 acres w/117 acres tillable, 5 acres woodland, 2 acres site (Option 3)
- 2 story stone & frame home w/main living area and 2 apartments, 67 tie stall dairy barn, 35'x126' heifer barn, 20'x70' & 20'x72' silos, lagoon manure system, milk house outbuildings.
- Located in an excellent agricultural area, very well maintained, limestone soil

CENTRE COUNTY

#7303 FA 125 ACRE DAIRY FARM, MILLHEIM AREA, \$339,500

- Approximately 125 acres, with 116 tillable, 4.5 acres woodland, 5 acres site and miscellaneous.
- Buildings include a sound two story, 4 bedroom plank constructed home, a two story bank barn with a 28 stall flat parlor with a pipeline, a 72'x80' free stall barn, a 20'x80' concrete stave silo, a 20'x92' poured concrete silo, a frame implement shed, and a 1000 bushel corn crib.
- This farm has been well maintained and is presently in operation. The tillable land ranges from gently rolling to moderately steep. An additional adjacent 72 acre tract with 63 acres tillable is available.

#6168FB 6.5 ACRE FARMETTE, POTTERS MILLS AREA \$209,500.

- 8.5 acres, with 1 acre site, balance tillable.
- 1 story 28'x52' ranch home in immaculate condition, and a 30'x48' heated and insulated garage.
- This listing is well suited as a farmette for horses. It has nice views, quality landscaping, and subdivision potential. The house and garage are very well built and cared for. The garage has potential for use as an office or in-home business.

#6154FA 55+/- ACRE HORSE FARM, BELLEFONTE AREA, \$325,000.

- Approx. 55 acres, with 18 tillable, 20 pasture, 13 woods, 4 site and misc
- Sound buildings include a 2 story double house, two story bank barn, a 60'x120' clear span riding arena, a separate 28'x42' horse barn, a 20'x120' implement shed, and other outbuildings.
- There are a total of 24 box stalls for horses. The farm has an outdoor riding area, and a paved barnyard. It is in a desirable geographical location in Centre Co.

HUNTINGDON COUNTY

#7309FA 158 ACRE DAIRY FARM, TYRONE AREA, \$339,500

- Approximately 158 acres, with 119 acres tillable, 18 acres pasture, 18 acres woodland and 3 acres site area.
- Buildings include a two story brick home with stucco exterior, a two story bank barn with a 38'x110' one story attachment with 50 tie stalls, a 16'x70' pole building, 20'x60', 18'x50' and 10'x35' silos with unloaders, and a 12'x53' trailer.
- This farm has productive, Hagerstown soil, and a very private, but easily accessible location. The pipeline, bulk tank and associated dairy equipment have been sold.

#6225FA - GENERAL OR BEEF FARM - PETERSBURG AREA \$295,000

- Approx. 170 Acres w/125 tillable, 27 pasture, 15 woodland, 5 site & road frontage
- Sound 2 story brick home w/new 1-story addition, (2) 1 story pole barns, 1 Quonset Shed
- The buildings on this farm have a nice setting away from the road. There is significant public road frontage and a small year-around stream. The Majority of the land is gently to moderately rolling. 16 miles from State College.

#134 FA - RIVER BOTTOM AND - ALEXANDRIA AREA - \$99,500

- 55+ Acres (45.6 tillable, highly productive)
- Ideal for truck cropping and irrigation
- Situated in an excellent location for direct (roadside) marketing

MIFFLIN COUNTY

#7278FA 123 ACRE DAIRY FARM, McVEYTOWN AREA, \$424,000

- Approx. 123 acres, 81 tillable, 30 woodland, 12 acres site and pasture
- Remodeled stone house, 2 story, bank barn, implement shed, corn crbs, 2 car garage
- This farm has gently to moderately rolling land and active Conrail Railroad borders the North side of the farm

LYCOMING COUNTY:

#6026FA 197 ACRE GENERAL OR RECREATIONAL FARM - MUNCY AREA - \$224,500 WITH TIMBER \$187,500 WITHOUT TIMBER

- Approximately 197 acres, with 80 acres tillable, 113 acres pasture and woodland, 2 acres site, 2 acres roads.
- This farm has a small 2 story home that would be well suited for use as a cabin, and two concrete block silos.
- Approximately 50 to 60 acres of the woodland on this farm has not been timbered since 1920. There are four small streams, two with natural waterfalls, and several springs. It has a substantial gravel township road frontage. This property is ideal for hunting and recreational use.

DETAILED BROCHURES ARE AVAILABLE FOR EACH OF THE LISTINGS OVER 75 VACANT LAND PARCELS - 1 TO 400 ACRES AVAILABLE IDEAL FOR CABINS AND HUNTING - FREE LISTS.