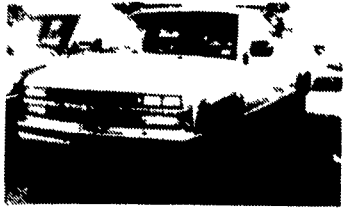


# USED TRUCKS



1989 Chevy Heavy Duty 2500, 4x4 Scottsdale, 350 FI, 4 Spd., PS, PB, AM & FM, Rear Sliding Window, 57,000 Miles

**\$10,800.00**



1990 Ford F-250 XLT Lariat, Heavy Duty, 351 FI, Auto With O/D, PS, PB, AC, Cruise, Tilt Wheel, AM&FM Stereo Cass., Two Tone Blue & Silver

**\$11,800.00**

## MARTIN'S AUTO SALES

1025 W. Main St., New Holland, PA 17557  
(717) 656-6621

Financing Available

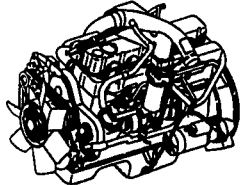
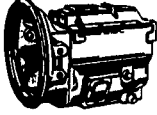


P.O. Box 148, Thomdale, PA 19372 USA  
Just off Exit 23 PA Turnpike • On Business Rt. 30

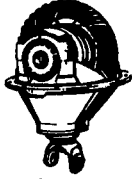
## WM. COHEN & SONS, INC.

TRUCK PARTS & RECONDITIONED PARTS  
TEL (215) 269-1298 • FAX (215) 269-0787

Open Mon.-Thurs. 7:00 AM-5:00 PM  
Friday 7:00 AM-4:30 PM  
Over 40 Years of Service



- Used & Rebuilt Engines
- New & Rebuilt Transmissions
- New & Rebuilt Rears
- Used & Rebuilt Steering Gears
- New & Used Hoods
- Used Trucks For Sale



# Royal Truck & Equipment Inc.

6910 Route 309 Coopersburg, PA 18036

(215) 282-4090  
(800) 283-4090

Just Off I-78, Between Allentown & Quakertown  
Financing Pre-Approved

1976 Ford LN7000 18' Stake Dump 3208  
Cat. DSL, 5/2 Spd., PS, AB, New PA Inspection, Ready To Go To Work.

1979 Int. \$1854 20' Kidron Polarized Reefer Body With Bifold Rear Swing Doors And A Curb Side Door, RD-1 Thermo King (Cycle Sentry) DT466, 210 HP Dsl, 5/2 Spd., PS, 28,000 GVW

1979 Int \$1800, 9' Stake Dump, V8, 4 Spd, PS, PB, 19,000 GVW, No CDL License Required, Parks Dept. Owned & Maintained Since New w/Only 21,000 Original Miles, Exceptional Must See To Appreciate.



81-85 IHC 1754 5 Spd Dsl., 14' Stk. or Cab & Chassis, 22,500 GVW, No CDL Required, Fleet Maintained, Starting At \$3900.00, Many To Choose From While They Last 215-282-4090.



1988 GMC 7000 12' Stake Dump w/Utility Boxes, 8.2L Diesel w/Only 56,000 Miles, 5/2 Spd., PS, 28,000 GVW, Bank Repo, Taking Offers.



1982-85 Ford E-350, Enclosed Utilities, 351 V8, AT, PS, PB, 7,000 Wat. Water Cooled Generator (Built In) Very Clean Tks. Owned & Maintained by Local Utility Co



Ford F350 Cab & Chassis 351, V8, 4 Spd., PS, PB, 11,000 GVW, Several To Choose From .....\$3,950 Ea.  
With New Stake Body .....\$4,950

**TWO ACRES OF ALL TYPES USED TRUCKS.**  
**"IF WE DON'T HAVE IT, WE'LL GET IT"**



**1984 Ford, F-800**  
**(Diesel) 5 & 2 Trans.,**  
**Aluminum Hay & Grain Body**  
**(by Hewey Welding)**  
**Very Nice, Clean Truck**  
**(717) 324-2168**

## 36 REAL ESTATE

12x60 mobile home, 2BR, must move, cheap!  
717-456-7372

150 tillable acre dairy/beef farm Prime river btm Pope soils. Good house and facilities. Growing Region II. Rail siding. Bradford Co., PA. \$239,000 terms. Other farms available. HOWARD M. KERR REALTY 717-265-8741. Frank Bertrand, Farm Agent. 717-265-6951.

2 story restored colonial, quiet rural village, double corner lot enclosed with-picket fence, 4 bedrooms, 2 1/2 baths, hardwood floors, oil hot water heat with woodburner, recent paint, roof. Approx 70 miles to Penn State, 45 min. from Harrisburg Market appraisal by 2 realtors, mid \$120,000 Call 717-539-8610.

50+A, Juniata Co., Farm/Hunting-Camp/Vacation/Residence, Woods, Fields, Stream, 3-Bdr. Home, Standard Septic, Barn, Privacy, Hunting, \$75,000 717-673-4507

ACREAGE. Dornsise, Northumberland Co., PA (3) separate parcels, each w/hard road frontage, approx 1000 +/- feet (A) 32 +/- A, 15 +/- A in some woods, small stream (B) 33 +/- A, wooded, excellent spring (C) 44 +/- A open and wooded, excellent spring Principals only, no brokers please. ... Might consider holding 70% mortgage at prevailing rates for qualified buyers Box R-12, %Lancaster Farming, POB 609, Ephrata, PA 17522

ASSOCIATES REAL ESTATE. Super home, 3-4BR, 1 1/2 baths, lg. formal DR, new cherry kitchen w/Jenn-Air range, microwave, DW, new ref. w/ice maker, new deck off breakfast room, private backyard w/shed, garage. Real must see at \$107,900. Lancaster Co, PA. Call Mary or Kurt 717-569-2222

Cape Cod home, 3/4BR, very large kitchen, DR, LR, 2 full baths, full basement, country location in Juniata County. (717)527-4694.

CLINTON COUNTY near Hanneyville 5 acre beautiful level wooded lot Perc /electric/driveway and adjacent public hunting land. Owner Financing \$18,900. 717-769-6445 Days 717-769-6035 Evenings.

CLINTON COUNTY 580 wooded acres surrounded by Sprout State Forest Paved township road runs through property w/EZ from Routes 120 or 44 Standing timber \$\$\$. Electric, trout stream, lots of potential. \$280,000 For more details and information 717-769-6445 Days 717-769-6035 Evenings Until 9PM BIG WOODS LAND CO.

CLINTON CO RETREAT-192 Wooded acres w/2 cabins adjacent Sprout State Forest, 2 trout streams in secluded/private setting at the end of forestry road, 15 miles from Lock Haven off Rt. 120, \$175,000 terms/ will divide (717)769-6445 days 769-6035 evenings BIG WOODS LAND CO

COUNTRY RETREAT, 145 acres, 2 acre pond house w/5BR, fireplace, satellite TV, adjacent 1600 acres PA Game Lands. Respond to: P.O. Box 301, Selinsgrove, PA 17870

Country Estate on 86 acres in Cumberland County. Restored 4BR farm house w/2 car garage, bank barn, 3/4 acres stocked pond, 2 streams, 15 acres woods 12 minutes from Carlisle \$245,000 (717)776-7882 (717)776-6980

DUNDEE, NY 30 acres w/ barn 4 miles from town, \$33,500 w/\$5,000 down (607)243-7285, or P O Box 8, Dundee, NY 14837

FARMS FOR SALE. CHRISTIAN COUNTY, KENTUCKY: 90 acres sowed in pasture, new fence, 4 ponds, combination barn and stable \*\*159A, 2 barns, good well, approx 8 miles North of Hopkinsville, KY For more information call STANLEY FRITZ REAL ESTATE & AUCTION 502-885-3117 mornings or night 6-8 CST Stanley Fritz 502-886-4216.

FARMS WANTED Are you planning on buying, relocating or selling your farm or land(s)? Give the experienced people at HEY-WORTH REALTY a call We are QUALIFIED AND EXPERIENCED in farm/land sales and have all types of farms for sale. For information Call or Write Lawrence Stouffer, HEY-WORTH REALTY, 1300B Dual Highway, Hagerstown, MD 21740. 301-733-3701 Office; 717-597-2584 Eves.

Farm: Evans Mills, NY, 200 acres, attractive 8RM house, 2 silos, approx. 72 tie stalls, \$125,000. Financing arranged, other farms available. Lois Lang, Broker, (315)649-2774.

FOR SALE: Bradford Co farm, 97 acres Ideal for horses or beef. Can be subdivided. House newly remodeled inside 717/297-3694.

GOVERNMENT HOMES for \$1 (U repair) Delinquent tax property Repossessions Your area (1) 805 962-8000 Ext GH-4156 for current repo list

S/York County Farm 160-A, 75 tillable, 4BR, 2BA, frame house, large barn w/horse stalls (717)927-6564.

Thousand Islands area, NY, 25 acre farmette w/two family farm house and garage, \$45,000. Price negotiable Call CT (203)485-9183

WANTED TO BUY. Dairy farm around 150 Acres, must be set up for dairy Write R-65, %Lancaster Farming, POB 609, Ephrata, PA 17522

## SCHUYLKILL COUNTY, PA

Approx. 170 Acre Nursery and Christmas Tree Farm. Turn-Key Operation-Complete. Since 1946. Quality known nationwide  
**717/345-4952**

## Thinking Of Selling Your Farm?

There are ways of selling your farm without paying excessive capital gains taxes. We can help you dramatically increase your annual income, continue to build equity and be relieved of the taxes, expenses and management of the farm. Call John Niesley for consultation (717) 531-2807  
**RE/MAX REALTY OF CENTRAL PA**  
Formerly Moyer Realty  
261 W. Chocolate Ave., Hershey, PA 17033  
(717) 534-1991

Lancaster Farming, Saturday, June 12, 1993-C35

COUNTRY PROPERTIES: 35 and 38 acre property w/ homes, barns, Franklin Co., PA Also, 100 acre farm located in Fulton Co, PA CALL DAVE McLU-CAS, J E KELSEY REAL ESTATE 717-328-9494, 717-328-5629 for further info on these and others!

WISCONSIN DAIRY FARMS, 30 cow to 150 cow, Up, Excellent Prices & Terms for Spring Possession. Call now! L L STEWART, Realtors, 2007 Hogeboom, Eau Claire, WI 54701, 715/834-6664

## Lebanon County Turkey Farm

Working turkey farm, 16,000 hens in two stage operation. Large home, plus barn on 20+ acres. Excellent income. Solid contract, and some financing available for right individuals.  
**(717) 865-6316**

## FOR SALE

Upper Pottsgrove, Montgomery County - 9+ acre farmette. 1859 brick 2 1/2 story, L.R., Kit., D.R., Den, 4 BRs, 40x50 post and beam barn, 32x32 pole barn, 5 Stoltzfus outbldgs., pond, springhouse, currently used as goat and sheep farm - \$142,900  
Call for details!  
**Herb & Doaty Realtors**  
**(215) 367-4000**

## Auction

Sat., June 26, 1993  
10 AM

Real Estate in the Heart of Big Game and Recreation Area of Mchenry Twp. Lycoming Co, PA. Route 44 North of Jersey Shore, PA.

Parcel 1: 53 A. Cleared + Wooded, w/1140 sq' Ranch House.

Parcel 2: 1.4 A. New 1 1/2 St. House 6 Rooms.

Antiques, Household, Tractor, Trucks, Tools, Equipment. For complete information and free brochure call 717-398-7316.

Open House for Real Estate Sunday, June 13 & 20, 12 to 3 PM.

**Rell Auction AU-1844L**

252 Allegheny St.  
Jersey Shore, PA 17740

**A. Clark Burkholder R.E.**  
P.O. Box 321  
Myerstown, PA 17067  
**717-866-5550**



Adam B. Helsey, Jr. Broker/Appr. Auctioneer



## Eastern Lebanon County

If you're looking for a "get-away" home with good seclusion, 4.5 acres of land, 3 car garage, lots of mature trees and over 3,000 sq. ft. of living space. "This is it!!" This 2 story home has 3 large bedrooms, 2 full baths, 17' carpeted Florida room, 25' family room with brick fireplace, and a 28' raised wood deck with a great view of the Blue Mountain. Truly a rare find! \$195,000.



## Eastern Lebanon County

Beautiful rancher with private setting on 3.3 acres. 3 bedrooms, double brick fireplace between living room and dining. 40' family room, central air conditioning, covered patio, 16'x32' in-ground pool with cement deck and cabana, 2 car attached garage plus a 4-car detached garage. Lots of fruit trees. Fantastic property for \$159,900.

