

REFRIGERATED TRUCKS FOR SALE



Can Be Used For Cold Storage Inside Or Outside 14'-22' Boxes Starting \$3500 And Up
201-663-0243

TRAILER HITCHES

Heavy Duty Truck Hitches, Vans, 4x4's, Motor Homes Most Class III Hitches \$59.95 Most Class IV Hitches \$87.00 Most Full Size Van Hitches \$73.00 Most Mini Van Hitches \$75.00

-Wholesale Outlet-

Weight Distributing Hitches Complete \$182.00 + Ball



Chrome Trailer Balls
1-7/8" Ball \$4.40
2" Ball \$5.00
2-5/16" Ball \$8.00

Pintle Mount
7" \$23.40
1" \$36.00

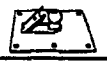
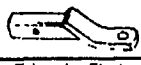
Universal Pintle Hitch
16,000# \$57.00



Ball Mounts 2" to 10" Drop \$12.00 & Up

Pintle Hook 7 Ton \$90.00

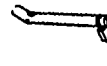
Goose Neck Hide-Away Box \$90.00



Tekonsha Electronic Brake Control \$58.20 & Up

Convert-A-Ball
2 Ball \$19.20
3 Ball \$28.99

Hitch Pin Lock & Key \$7.00



Thousands Of Parts In Stock - Buy Below Dealer Cost U.P.S. C.O.D. SHIPMENTS ONLY Call For Free "Full" Price List

GSI SERVICES

215-536-6333 FAX 215-536-8437

'89 Chevy 3500 w/12' Reading stake body, 350 FI, 4 spd., PS, PB, 10,500 GVW, 18,000 original miles, like new, red, \$13,500. 717-733-2873

'89 Ford F250, HD, 1/2 ton, 351 FI, auto, PB, PS, AM-FM, 8,600 GVW, 48,000 miles, dark brown, 1 owner, excellent condition, \$8,975 717-733-2873

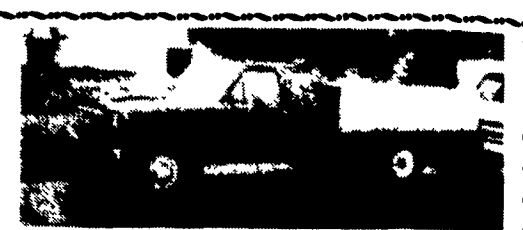
'90 Ford XLT F350 4x4 diesel P/U, auto, PS, PB, AC, AM/FM, garage kept, never driven in snow, 28,000 miles, like new condition, \$17,900 201/694-0834

'88 Ford Super duty truck, 460 engine, 5 speed, 41,000 miles, 12' bed w/40" sides, asking \$10,000. No Sunday calls. (814)766-2397.

'90 Ford XL F150, 300 EFI, 5 spd., PS, PB, AM-FM cassette, dual tanks, new radials, 45,000 miles, black, excellent condition, \$8,300. 717-733-2873

FOR SALE

1979 Chevrolet C60 truck with 2 speed rear end. 12' box, 63,000 miles, 350 engine
1985 Aluminum 12' step van, automatic, with 350 engine
1987 Econoline tandem dual wheel axle trailer, 27,000 lbs. gvw
For More Information, Please Call **(717) 265-2200**



1983 Ford F-250 Super Cab
With 9 Ft. Flat Bed, 460, Auto, PS, PB, AM-FM, 8,800 GVW, Class 3 Hitch
\$3,600
717-733-2873



1988 F-350 XLT Lariat
V8, 7.5, 4 Speed With Overdrive, Air, PS, PB, PW, PDL, CB, Tilt, Cruise, 4 Door, Dual Wheels, AM/FM Stereo Cass., Equipped With Chassy Chassis, 5th Wheel, White With Blue Stripes, Sharp Truck
Countyside Auto Sales
Manheim, PA
(717) 664-2170 Office
(717) 865-3488 Home

Anthony *Landis*

AUTO BODY & SALES

1701 B Division Hwy.
New Holland, PA • 717-355-0644

Specializing In Rebuilt Collision Damage Vehicles



'91 MERCURY SABLE GS
All Options, V6, AT, 39,992 Miles, Light Damage, Good Title
\$5,800

COMING IN: '87 FORD F-150 XL, 300 FI, 4 Speed, 59,000 Mi., 5450 GVW, 2-tone, Very Nice, Minor Damage \$3,000

C P MARTIN FORD
Presents the
NEW LOOK OF QUALITY

1993 FORD F-150 4x4

XLT, 5.0L, OD Trans., AC, AM/FM Cass., PW, PDL, Cruise, Tilt, Deluxe Two-Tone #3046



Was \$21,238
CP Martin Sale Price **\$17,699**

1993 FORD F-250 4x4

5.8L V-8, Auto OD, Argent Rear Bumper, All-Terrain Tires, 8 Ft. Bed, #3040



Was \$20,116
CP Martin Sale Price **\$17,900**

1993 FORD F-150 SUPERCAB 4x4

XLT Lariat, 5.0L V8, AT, AC, AM/FM Cass., PW, PDL, Deluxe Two Tone Paint, More #3064



Was \$24,696
CP Martin Sale Price **\$20,899**

1992 FORD E-350 SUPERWAGON

15 Passenger, 351 V8, Auto OD, XLT Trim, High Capacity Air, Completely Loaded!



SALE PRICE **\$19,795**

PUSH, PULL OR DRAG IT IN \$2500 MINIMUM TRADE

'89 FORD XLT CLUB WAGON V8 AT PS PB AC PW PDC Captain's Chairs Cassette \$12,885 -\$2,500 \$10,385	'91 C1500 SPORTSIDE Red/Silver PS PB AC Rally Wheels Sharp! \$12,795 -\$2,500 \$10,295	'88 BRONCO II XL AT V-6 PS PB Two-Tone Paint Nice \$11,250 -\$2,500 \$8,750	'87 FORD 4x4 P.U. Red AT PS PB, low low miles, one owner \$12,495 -\$2,500 \$9,995	'91 CHEVY 4x4 Z-71 Gorgeous Bright Blue AT PS PB 25,000 Miles \$17,495 -\$2,500 \$14,995	'90 FORD BRONCO FULL SZ. AT PS PB AC AM/FM CASS \$16,995 -\$3,000 \$13,995	'91 FORD F-150 LARIAT 5-Speed PS PB, AC, Loaded w/Equip., 22,000 Orig. Mi \$13,495 -\$2,500 \$10,995
'88 JEEP WRANGLER CONVERTIBLE Very Sharp & Clean! \$10,895 -\$2,500 \$8,395	'92 GEO TRACKER LSI CONVERTIBLE AT PS/PB AC AM/FM cass bright burgundy 8,000 miles \$14,195 -\$2,500 \$11,695	'88 FORD E-150 HI-TOP CONV VAN Loaded w/requp low low miles Must See! \$16,995 -\$3,000 \$13,995	'91 8-16 PICK-UP V-6 AT PS PB AC 10,000 Orig. Miles. Must See! \$11,395 -\$2,500 \$8,895	'92 FORD AEROSTAR V-6, AT, PS, PB TR. Cruise, AM/FM w/Cass \$13,795 -\$2,500 \$11,295	'88 CHEVY C-1500 W/Fiberglass cap 44,000 ong mi, V-8, AT PS PB TR \$11,895 -\$2,500 \$9,395	'92 RANGER XLT 60-40 Seats AC PS PB AM FM 18,000 Orig mi Like New \$13,090 -\$2,500 \$10,590

WHY?

...is Your Competition Driving Isuzu Trucks?

Less Down Time & Increased Profits!

Isn't It Time For An Isuzu For Your Business?

1993 ISUZU NPR WITH STAKE BODY

11,050 GVWR, 135 HP Intercooled Turbo Diesel Engine, 12 Foot Morgan Stake Body, 3 Year Unlimited Mileage Engine Warranty, More! #3118



\$18,992
Tax & tags additional.

717-354-4901
New Holland
FORD • ISUZU TRUCK
Rte 23, New Holland, PA



(717) 733-6644
CALL ON MY DIME
1-800-258-2677

Rt. 272,
North Reading Road, Ephrata
(Across From The Green Dragon Sign)

