

Penn State Educates Lawmakers On Benefits Of Ag

(Continued from Page C9)

by a maple tree, as well as its sugar content, according to regular analyses of sap taken from affected trees.

McCormick said the presence of the insects can have a long-term effect on maple trees through defoliation and loss of sugar production.

This serious problem is evident in that the sugar maple has had, in the last 10 years, the least growing stock caused by defoliation and death, according to McCormick. He warned that there is very little regeneration of this precious tree

in parts of the state. And federal funding for further thrips research has stopped.

McCormick said the research results will be spread through various journals, video conferences, and reports at meetings.

Dale Jeffrey, West Salisbury, operates Wagner's Sugar Camp. His great-grandfather started the camp which makes Jeffrey, through his mother, the fourth generation to run it.

In the early days, renowned artist Tom Shenk painted the Wagner Camp which for years has been reproduced on hundreds of thousands of maple syrup containers.

In the poignant scene his late Aunt Leona is pictured working.

The group, following the luncheon presentations, went to the Wagner Camp where on-site pear thrip research was documented.

Despite its tiny size, the damage inflicted to leaf buds by the pear thrip is highly visible in the opened leaves. They are full of holes. Sugar maple trees at the Wagner site confirmed the seriousness of the problem.

Jeffrey, who travels extensively in behalf of promoting the Somerset County and Pennsylvania maple industry, once expressed his concern about the lack of newcomers into the industry whose ages are 20 and higher. Coupled with the decreasing regeneration of sugar maples, and the advancing ages of the best county producers/promoters, he's looking at

all angles to improve the situation.

He said he urges youngsters to take responsibility for planting a sugar maple tree now so that before they die they will see it as a healthy, productive tree.

Additionally, the county maple industry has a very high impact on tourism, which ranks second — right behind agriculture as the leading county industries.

A sweet tree plantation at the Wagner site was also viewed by the group. Penn State is involved in monitoring the saplings that were produced by the USDA Forest Service project to develop a source of improved sugar maple seedlings.

Officials also observed how an underground water cooling system is used to divert stream water before it passes through the trout nursery. Penn State know-how

was involved in designing the project that is supposed to reduce production costs, disease problems, and fish mortality.

The final afternoon tour was to the Snyder potato chip operation located in Berlin. Eric Lowe, a project associate studying Penn State agricultural engineering, discussed utilization of waste potatoes and other food processing residuals.

He said that potato waste looks promising as animal feed and composting material, especially when dried.

Other persons attending the event were 59th District State Representative William R. Lloyd, Somerset County commissioners David Mankamyer and Robert Will, and Harold R. Ott, central region director of the cooperative extension.

Northeastern Farm Credit Reports Profitable Quarter

LEWISBURG (Union Co.) — Profitable operations and signs of a stabilizing regional agricultural economy appeared in first quarter financial results released by Northeastern Farm Credit, ACA.

First quarter 1993 net earnings of \$553,000 were consistent with the same period in 1992, with \$190 million in loans outstanding.

Robert T. Reich, president of Northeastern Farm Credit, ACA, said, "Most farmers in the region continue to exhibit financial stability and progress that began in mid-1992 after experiencing severe stress caused by the drought and weak milk prices of 1991."

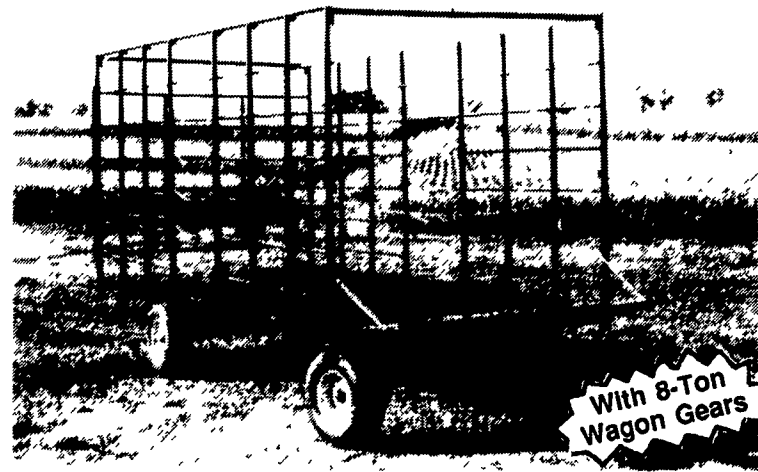
Farm Credit's loan portfolio has reflected the stability and progress experienced by borrowers with a decrease in adversely classified loans since the middle of last year, Reich explained. "For the first quarter 1993, our adversely classified loans as a percentage of total loans has decreased almost 13 percent compared to the same quarter of last year," Reich said.

Contributing to net earnings for the first quarter of 1993 was a reduction in the provision for losses. Northeastern posted a reversal of \$9,000 this year, down from a \$61,000 provision for the same quarter of 1992, reflecting a positive trend in the loan portfolio. Reich said that the \$70,000 reduction in provision for loan losses for the first quarter 1993, as compared to the same time last year, reflected the improvement in the local agricultural economy and the financial condition of its borrowers. He also noted that northeastern Pennsylvania's farmers continue to improve their farm management skills, thus developing more efficient operations.

Net interest income for the quarter was \$1,304,000, an increase of 79,000 from the first quarter of last year. The advance was primarily

attributed to the increase in total loans outstanding.

STEEL BALE BOXES



With 8-Ton Wagon Gears

3 Sizes Available... 16', 18', 20' with or without running gear

• Also will fit sides onto your flat wagon

Farm Gates Made To Your Specifications

MFD BY: GAP HILL FARM WAGONS

5549 Lincoln Hwy. - Gap, PA 17527 717-442-9489
Call Bet. 8:30 & 9:00 A.M.

FARM DRAINAGE and SOIL CONSERVATION

We Specialize In Soil Conservation And Land Improvement Work

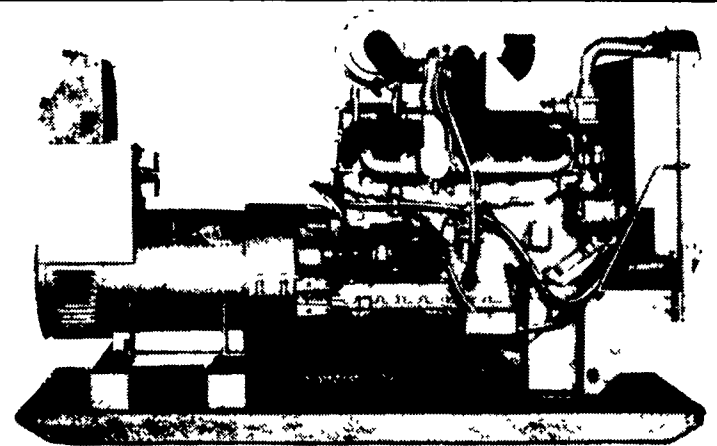


NOW AVAILABLE...

LARGE TRACK LOADER w/BUCKET CAPACITY OVER 3 YARDS

We're Equipped With: Dozers, Pans And Excavators to Handle Any Excavating Jobs, Such As Terraces, Waterways, Diversions, Ponds, Etc.

COCALICO EQUIPMENT CO.
Farm Drainage & Excavating
323 Reinholds Rd. Denver, PA 17517
(215) 267-3808 (717) 738-3794



Automatic Systems

NEW

USED

- | | | |
|------------------|------------------|------------------|
| 1 - 30 KW LP Gas | 1 - 10 KW Gas | 1 - 10 KW P.T.O. |
| 2 - 50 KW PTO | 1 - 15 KW P.T.O. | 1 - 85 KW LP Gas |
| 1 - 60 TW PTO | | |

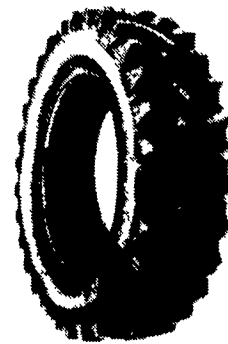
24 HR SERVICE

MAXI-POWER

RADIO DISPATCH

330 Fonderwhite Rd. Lebanon, PA 17042
717-273-4544 1-800-272-MAXI

COMPLETE FARM TIRE LINE

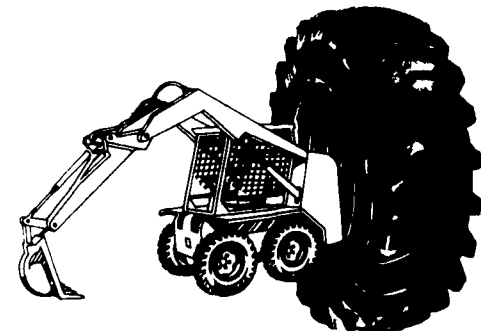


Rear Tractor Tires



Front Tractor Tires

All Sizes And Types Of Tires Available At Discount Prices



Skid Loader Tires

- Fast On-The-Farm Service
- Radio Dispatched Service

LEOLA TIRE SERVICE, INC.

717-656-2574 258 W. MAIN ST., LEOLA, PA

DUNLOP
The Tire Pros
World Leader in Radial Technology For Over 60 Years