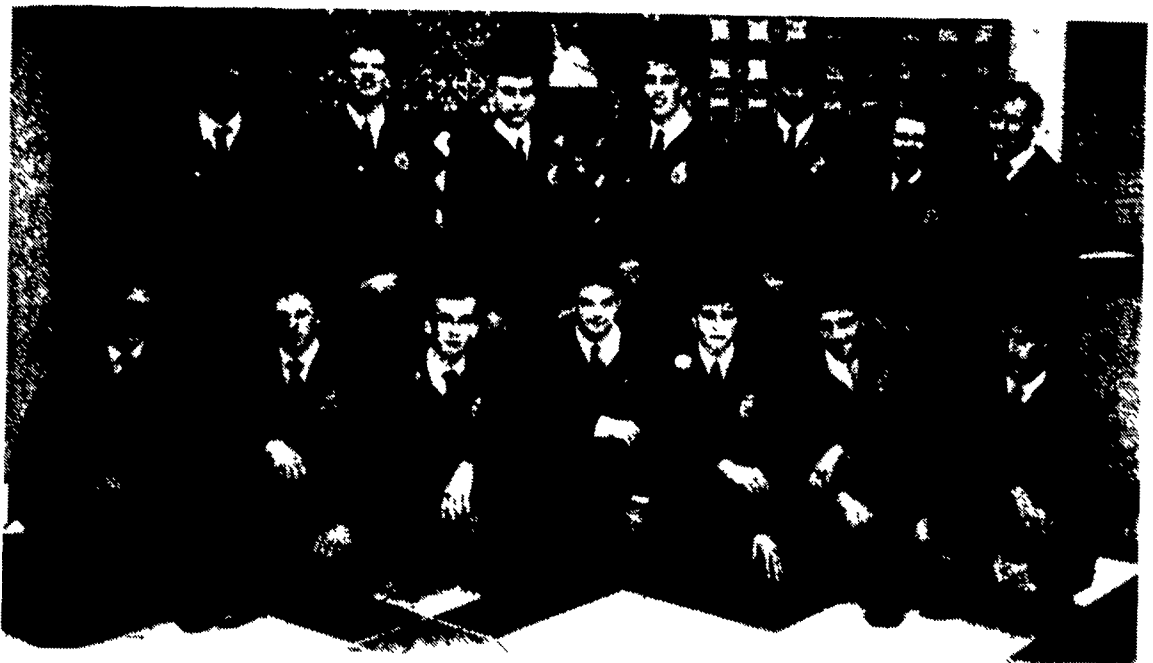




**HAPPENINGS**

(Continued from Page B36)

Lancaster County recently hosted the second annual Red Rose Leadership Conference at Lancaster Mennonite High School. The Lancaster County 1992-1993 Officer Team, front row, from left, Mark Fry, county chaplain, 1993; Jerry Bollinger, county reporter, 1992; Randy Sauder, county sentinel, 1992; John Klelboeker, national central region vice president; Daryl Weaver, county secretary, 1993; Brian Hornberger, county reporter, 1993; and Jason Reifsnnyder, county vice president, 1992. Back row, from left, Toni Miller, county secretary, 1993; John Huber, county vice president, 1993; Wendall Landis, county sentinel, 1993; Wade Esbenshade, county vice president, 1993; Chad Slusser, county treasurer, 1993; Marcl Harnish, county president, 1993; and Terry Worl, county treasurer, 1992.



**MILK.  
IT DOES A  
BODY GOOD.™**



**THE KUBOTA TRADITION**



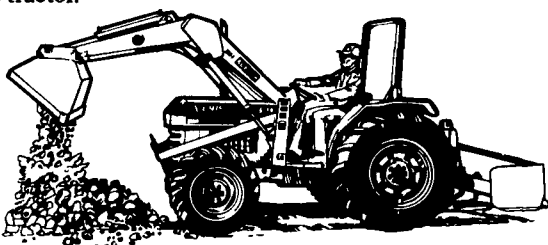
Kubota's L-Series tractors meet the demands of today's mid-size tractor users. Ranging from 20-40 PTO HP, they are ideal for small farming chores, weekend farming, light construction, commercial grass cutting, and a wide variety of maintenance and utility operations.

The Kubota tradition of quality performance, versatility, economy and durability can be found in each one. Quick-

attach implements transform your L-Series Kubota into a mower, scraper, tractor/loader/backhoe, and more.

Create your own traditions of comfort and ease of operation with exciting options, including: power steering, glide shift transmission, and more. A narrow version is less than 4.4 feet wide. Heavy duty models offer enhanced loader performance. All models have features to reduce operator fatigue and enhance safety.

For versatility and power, begin your Kubota tradition with an L-Series tractor.



**Kubota.**

Dairy Month is a natural time for a real "Thank you."



YOUR FULL LINE KUBOTA PRODUCT HEADQUARTERS  
• INVENTORY • PRICE • KNOWLEDGEABLE SALES STAFF  
• SERVICE EXPERIENCE

OVER 100 NEW KUBOTA TRACTORS IN STOCK!

**KELLER BROS.**  
**KUBOTA**

FINANCING OR CASH DISCOUNTS AVAILABLE



**TRACTORS & EQUIPMENT**  
Serving Central PA Since 1921

CALL FOR DETAILS ON LEASING

**LEBANON**

Rt. 47, Box 406, Lebanon, PA 17042  
Rt. 419 1 mile West of Schoeffersville  
**717-949-2000**

STORE HOURS  
MONDAY-FRIDAY 7:30-5:00  
SATURDAY 7:30-12:00

**2 Locations**

**LANCASTER**

1060 Fruitville Pike, Lancaster, PA 17601  
At Route 20 & Fruitville Pike  
**717-569-2500**

PENNSYLVANIA'S LARGEST KUBOTA DEALER

**B&B SPRAY PAINTING  
SANDBLASTING**

Quality That's Affordable



Spray Roll Brush

Specializing In Farm Buildings, Feed Mills - Roofs - Tanks - Etc., Aerial Ladder Equip. Stone - Brick - Restoration

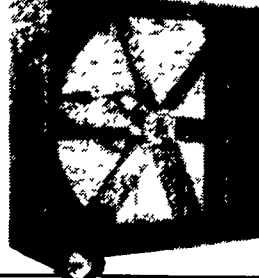
Gibbon's Rd. RD #1 Bird-in-Hand, Pa.

Answering Service (717) 354-5561

**ZIMMERMAN  
MFG. CORP.**

125 King Court/  
Hollander Rd.  
New Holland, PA 17557  
(717) 354-9611

Contact Us For Literature & Prices!

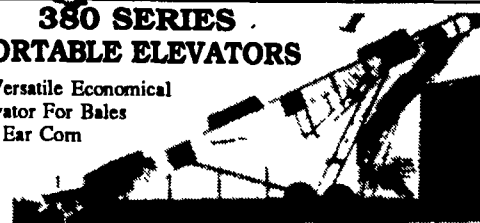


**36" or 48" PORTABLE FANS**

Excellent for cooling dairy barns, livestock buildings, garages, warehouses, plants or for emergency ventilation.

**380 SERIES PORTABLE ELEVATORS**

A Versatile Economical Elevator For Bales and Ear Corn



WELL BALANCED, RUGGEDLY BUILT FOR MANY YEARS OF TROUBLE FREE SERVICE

**390 Series ROLL-A-WAY CONVEYOR**



This is A Rugged High Speed Unit For Ear Corn, Silage, Bulk Feeds, Small Grains, Manure or Bales.

**A FULL LINE OF EXHAUST FANS**

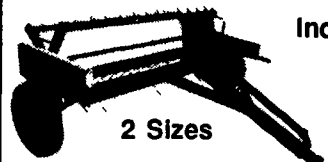


Including Efficient Belt Drive Units With Housing And Shutter  
24", 30", 36" And 48"

**880 SERIES PORTABLE BALE ELEVATOR & MOW CONVEYOR SYSTEM**



**ZIMMERMAN HEAVY DUTY HAY TEDDER - 790 SERIES**



Increase hay crop value with faster drying time...  
2 Sizes  
7' & 9' Raking Width PTO Drive

**UTILITY TRAILERS FRT SERIES**



Available In 5000 Thru 10,000 GVW. Other Models 3000 to 24,000 GVW Also Available.



We Salute The Dairy Farmers For A Job Well Done!