

4-H Driving Clinics Set

UNIVERSITY PARK (Centre Co.) — Well-known carriage driving clinician Lore Homer will conduct a series of 4-H regional driving clinics in June.

Registered judge for both the American Driving Society and the American Horse Shows Association, Homer has been successful in all phases of pleasure and combined driving. She has shown the Morgan Open Competition champion for several years and the 1989 world champion Morgan in carriage driving.

Clinics will be held on June 22 in the Western Region at the Westmoreland County Fairgrounds, June 23 in the Central Region at the Williamsport Riding Club in Lycoming County, and June 24 in the Eastern Region at the Montgomery County 4-H Cen-

ter. All clinics begin at 3 p.m. and are limited to 20 horses each.

Cost is \$5 for 4-H members and \$10 for nonmembers with horses or ponies and carts. Spectators will be admitted for \$2. There is no fee for the measurement training.

Clinic participants will learn correct procedures for training, harnessing, and driving horses and ponies, with emphasis on proper turnout and safety techniques for handling and driving. Beginning

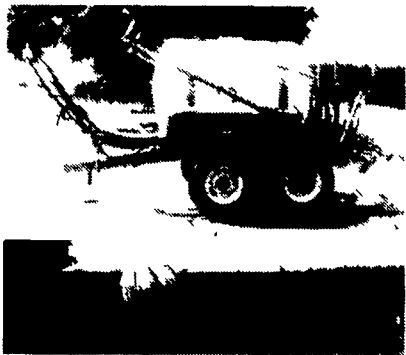
at 6 p.m., height measurement training to certify measurers also will be conducted.

Preregister before June 15 for the driving clinics and for the height measurement training. For more information or to register, contact Patty Kelly in the western region (412) 834-0180, Kathy Brown in the Central Region (814) 359-2547, or Lore Homer in the Eastern Region (215) 233-3657.



Your Complete Headquarters For Sprayers And Parts

HEAVY DUTY SPRAYERS BUILT STRONG TO PERFORM TOUGH



- 200, 300 & 500 Gal. Trailer Models
- 110, 150, 200 & 300 Gal. 3 Pt. Hitch Models

FEATURES AVAILABLE:

- 30', 35' and 40' Booms
- 30' & 45' All Hydraulic Folding Boom
- **Quick Tejet** No Drip Nozzles
- Independent Boom Suspension Eliminates All Boom Bouncing.

At Last! A Reliable, New Stainless Steel AG-CHEM FOAM MARKER

Each Foam Marker Contains:

- Mixing chamber for each boom.
- Drop hoses for each boom.
- Electric harness for in-cab controls (on-off/left-right).
- Hose for boom lengths up to 47'.

The Ag-Chem foam marker offers you efficient operation with a 12 volt compressor that draws only 9 amps. Independent left and right boom markers can be controlled from the cab for on-the-go operation. That lets you operate either boom marker for precise, economical foam placement. And best of all the Ag-Chem Foam Marker produces a dense foam within seconds of agitation, and has a dependable output that can be adjusted for volume.

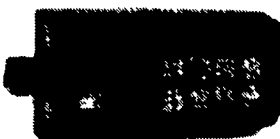
Use with the new 80-to-1™ high concentrate foam



TERRA-TRONICS I

Electronic Monitor Measures Working Acres And Ground Speed

- Easy-to-see digital readout
- Easy-to-operate touch sensitive keys
- Operates with any field implement requiring acre measurement - pulled, mounted, or self-propelled sprayers combines etc



Reg. \$212.00
SPECIAL \$188.00

Handy Half Gallon AG FOAM

Reg. \$10.20
SPECIAL \$9.25

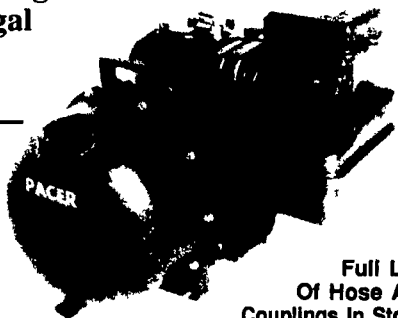
FOAM DYE For Higher Visibility Foam

SPECIAL \$12.00

Self-Priming Centrifugal PACER PUMPS

- 3 H.P. 'S' Series
- 1 1/2" Or 2" Ports

Reg. \$212.00
SPECIAL \$185.50



Full Line Of Hose And Couplings In Stock!

Features:

- Self-priming to 20 feet
- Total heads to 120 feet
- Capabilities to 200 U.S. GPM
- Built in check valve
- Equipped with 1 1/2" or 2" female threaded connections, NPT

• 5 H.P. 'S' Series
• 2" Ports
Reg. \$252.00
SPECIAL \$220.50

• 5 H.P. 'S' Series
• With I/C Briggs Engine
• 2" Ports
Reg. \$332.00
SPECIAL \$290.50

• 5 H.P. 'S' Series
• With Honda Engine,
• 2" Ports
Reg. \$482.00
SPECIAL \$421.75

• 'S' Series Pedestal Pump Only 1 1/2" or 2" - Reg. \$138.00.....**SPECIAL \$120.75**

Raven Tough Polyethylene Tanks



- SPRAYER TANKS - ALL SIZES AVAILABLE FROM 25 GAL. to 2500 GAL.
- STATIONARY TANKS - For Liquid Fertilizer Storage

We Also Stock A Complete Line Of:

Tejet
Sprayer Nozzles And Accessories

Hypro
Pumps And Accessories

PACER PUMPS
• Sprayer Hose
• Ball Valves
• Nylon Fittings
• Poly Tanks

PAUL B. ZIMMERMAN, INC.

50 Woodcorner Rd., Lititz, PA 17543
1 Mile West of Ephrata

(717) 738-7350

• HARDWARE • FARM SUPPLIES •

HOURS:
Mon., Thurs., Fri. 7-8:30
Tues., Wed. 7-5:30
Sat. 7-4:00

★ MID SPRING SALE ★

FREE REPLACEMENT & UNLIMITED MILEAGE

The **Jetzon**

Passenger Tire Warranty

A UNIQUE warranty concept, originated in 1984 and still unmatched by any other brand...

UNIQUE because it covers tires that are unserviceable for almost any reason, including road hazards such as unreparable punctures, cuts and breaks;

UNIQUE because replacement is made FREE during the first 50% of treadwear;

UNIQUE because there is no time or mileage limitation; UNIQUE because it is honored by Jetzon distributors throughout the country;

UNIQUE because there is no cumbersome record keeping required;

UNIQUE because it is not restricted to the original purchaser.

REVENGER RADIAL LT

- Polyester Cord
- 2 Steel Belts
- Radial Construction
- M&S Rated



Size	Ply	Price
215/85R16	D	\$ 87.00
235/85R16	E	\$ 98.00
8.00R16.5	D	\$ 87.00
8.75R16.5	D	\$ 95.00
9.50R16.5	D	\$108.00
7.50R16	D	\$ 95.00

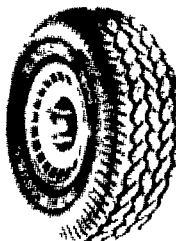
TRAIL CUTTER RADIAL A/P

- Polyester Cord
- 2 Steel Belts
- M&S Rated
- Tubeless
- UTQG Rating: P-Metric Sizes 300 AB



Size	Ply	Price
P205/75R15	SL	\$ 82.00
P215/75R15	SL	\$ 85.00
P225/75R15	SL	\$ 89.00
P235/75R15	SL	\$ 72.00
LT225/75R16	D	\$ 91.00
LT245/75R16	E	\$109.00
LT265/75R16	C	\$ 95.00
LT235/75R15	C	\$ 87.00

REVENGER RV RADIAL M&S



Size	Ply	Price
30x9.50R15	C	\$90.00
10R15	C	\$99.00
31x11.50R15	C	\$107.00
31x10.50R16.5	D	\$108.00
33x12.50R15	C	\$118.00
33x12.50R16.5	D	\$130.00

• Raised Outline White Letters

REVENGER II RADIAL A/S

2 Steel Belts Polyester Cord

Radial Construction M & S Rated



Size	Ply	Price
OUTLINE BLACK LETTERS		
LT225/75R16	D	\$79.50
LT245/75R16	E	\$99.00
LT215/85R16	D	\$77.00
LT235/85R16	E	\$90.00
8.75R16.5	D	\$84.00
9.50R16.5	D	\$94.00
OUTLINE WHITE LETTERS		
30x9.50R15	B	\$79.50
31x10.50R15	B	\$87.50

ULTRA QUAD + TOURING TIRE

JETZON ULTRA-PREMIUM WARRANTY

Radial Construction



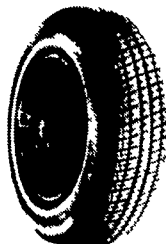
Polyester Cord
2 Steel Belts
65,000 Miles

Free Replacement: 100% for Materials and Workmanship 50% for Road Hazard

Size	PRICE
WHITEWALL	
P185/70R14	\$56.00
P205/70R14	\$62.00
P215/70R14	\$65.00
P215/70R15	\$67.00
P225/70R15	\$71.00
P235/70R15	\$72.00
P255/70R15	\$78.00
BLACKWALL	
P175/70R13	\$49.50
P185/70R13	\$51.00
P195/70R14	\$56.00

GRANDEUR PREMIUM ALL SEASON STEEL RADIAL

Radial Construction 60,000 Mile



Polyester Cord
2 Steel Belts

50% Free Replacement Warranty for Materials, Workmanship and Road hazard

SIZE	COST
P155/80R13	45.00
P165/80R13	48.00
P175/80R13	49.00
P185/80R13	50.00
P185/75R14	52.00
P195/75R14	53.00
P205/75R14	57.00
P205/75R15	59.00
P215/75R15	61.00
P225/75R15	64.00
P235/75R15	67.00

STEEL BELTED METRIC RADIAL

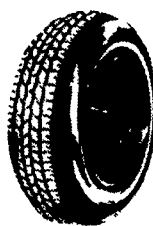
Polyester Cord 2 Steel Belts M&S Rated

45,000 Miles



DORAL ALL SEASON

35,000 Miles



Size	Price
155R12	\$32.00
145R13	\$34.00
155R13	\$35.00
165R13	\$36.00
175R14	\$41.00
185R14	\$43.00
165R15	\$40.00
175/70R13	\$39.00
185/70R13	\$40.00
185/70R14	\$43.00
185/70R14	\$45.00
205/70R14	\$47.00

Size	Price
P155/80R13	\$31.00
P175/80R13	\$34.00
P185/80R13	\$35.00
P185/75R14	\$36.00
P195/75R14	\$38.00
P205/75R14	\$39.50
P205/75R15	\$41.00
P215/75R15	\$43.50
P225/75R15	\$45.00
P235/75R15	\$48.00

ALL PRICES INCLUDE MOUNTING, BALANCING, NEW VALVES & TIRE DISPOSAL

HURST TIRE SERVICE

1 Mile West of Blue Ball on Route 322

(717) 354-4931

