

Farm Calendar

(Continued from Page A10)

Washington Co. Wool Pool, Washington County Fairgrounds, 6 p.m.-8 p.m., and June 22, 8 a.m.-3 p.m.
PennAg Industries Association annual Grain Meeting, Eden Resort Inn, Lancaster, 6 p.m.
National Dairy Summit, York Fairgrounds.

Tuesday, June 22
Schnecksville Community Fair, thru June 26.

Wednesday, June 23
Everyday Is Sundaes, Judge Lewis Quadrangle, Philadelphia Independence Mall, 11 a.m.-2 p.m.
Berks Co. 4-H Dairy Judging School, Younker's Farm, Kirbyville, 7:30 p.m.

Thursday, June 24
Centre Co. barbecue and twilight meeting, Stringer's Sand-Ridge Farm, Bellefonte, 6:30 p.m.
Southeast Pennsylvania Dairy Pasture Walk, Jessie Howe Farm, Bucks Co., 9:30

a.m.-11:30 a.m.

Saturday, June 26
Kutztown Folk Festival, Festival Grounds, June 26-July 5.

Bucks-Montgomery Dairy Princess Pageant, Delaware Valley College.

Sunday, June 27
National Holstein Convention, Rochester, N.Y., thru June 30.

Monday, June 28
Butler Fair, thru July 4.
Wolf's Corners Fair, Tionesta, thru July 4.

Tuesday, June 29
Grazing Tour, Somerset Co., bus departs from Logan Valley Mall, 8:15 a.m., returns to University Park, 6 p.m.

Wednesday, June 30
Centre Co. Conservation Field Demo, Kar-Mar (Mark Kauffman) Farm, Spring Mills, 10 a.m.-3 p.m.

Thursday, July 1
Somatic Cell Count drops to 750,000.

Management Controls Parasites

ELKTON, Md. — There are some good guidelines for using management to control parasite within a dairy herd, according to the University of Maryland Cooperative Extension Service.

The advice from extension specialists calls for adherence to a few rules of thumb.

- Treat all animals at the same time. Use the proper dose.
- Coordinate deworming with pasture rotation.
- Prevent manure contamination of feed and water. Do not feed your animals on the ground.
- Remove manure from stalls and paddocks frequently.
- Avoid overgrazing pastures.
- Do not spread manure on pastures where animals graze. Consider composting manure for one year to help destroy the live parasites and their eggs.
- Control flies and other insects.
- Monitor parasite infections by periodic examination of manure samples.

Lancaster Farming
OPINION

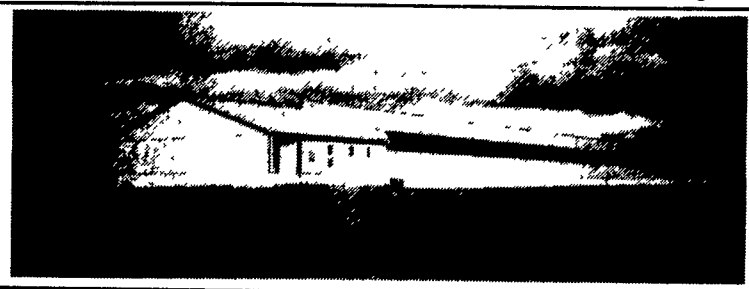
(Continued from Page A10)

could without sun block. Second, wear long sleeves, tightly woven cotton shirts, long pants, and a wide brimmed hat. Third, follow steps one and two year-round. The sun may cause as much damage in

the fall and winter as it can during hot summer months.

Feather Prof's Footnote: "Perfection is our goal. Excellence will be tolerated."

Needed immediately:



60' x 496' ASP breeder house

- Contract commercial breeder houses for American Selected Products, Milton, Pa.
- Preferable within 60 miles of Selinsgrove, Pa
- New housing
- Remodeled existing housing
- Single story, deep pit or high rise
- Automatic feeding, ventilation and egg gathering

Call: Tom Weidman
Northeast Agri Systems 1-800-673-2580

Call Northeast Agri Systems For information on new contracts being offered by other local feed and livestock companies

Contracts available for
• Tom & hen turkeys: 7,200-15,000 birds



Two 50'x620' tom turkey houses

Contracts available for
• Hog finishing: 1,000-3,000 head
• Sow units: 200-1,800 sows



101'x245' 3000 head tunnel ventilated hog finishing house

Contracts available for
• Layer houses: 90,000-126,000 birds



108,864 bird CHOR-TIME, layer house with ULTRAFLO® feeding



C • O • M • P • A • N • Y

COMMODITY MARKETING DIVISION
Buffalo, NY

It's Time To Think About New Crop Cottonseed

Competitive October-November-December Quotes Available Today

We Also Handle:

- | | |
|---------------------|---------------------|
| Dried Brewers Grain | Wet Gluten Feed |
| Corn Gluten Feed | Malt Sprout Pellets |
| | Bakery Feed |

Call Today and Ask For:
PETER SCHLEE OR PAT O'BRIEN
(800) 878-6521

GRAIN DIVISION

OPERATING ATLAS GRAIN FACILITY NORTHAMPTON, PA

BUYING AND SELLING WHEAT

Picked Up and Delivered Bids Available
Prices Quoted for Spot or Future Delivery
Prompt Payment

WE WANT TO BUY YOUR NEW CROP WHEAT

ASK FOR BILL KRUEGER (800) 487-1474



We salute the Dairy Producer for their hard work and dedication to the industry. Sire Power is ready to meet your genetic needs. Give "Your Partner in Genetic Progress" a call.

RR 2, Box 10, Tunkhannock, PA 18657
717-836-3168 FAX 836-1490



Northeast Agri Systems, Inc.

FLYWAY BUSINESS PARK
139 A West Airport Rd. Lititz, PA 17543
(717) 569-2702 1-800-673-2580

