

JUNE IS DAIRY MONTH



FACTORY TO FIELD

FARM TIRE VALUES

QUALITY • SERVICE • DEPENDABILITY • ECONOMY

THE HARD WORKING MULTI-ANGLE M/B

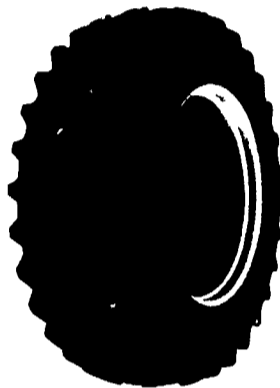
- Excellent drawbar pull with long-bar, short-bar lugs for improved traction
- Designed for improved stability and roadability, plus reduced vibration
- Strong angle-braced lugs have self-cleaning design
- High-strength polyester cord body, and heavy duty rim shield protects tire from damage



Size	Price
12.4-28 4 Ply	\$162.00
13.6-28 4 Ply	\$182.00
15.5-38 6 Ply	\$295.00
18.4-34 6 Ply	\$385.00
18.4-38 6 Ply	\$415.00
18.4-38 8 Ply	\$455.00
20.8-38 8 Ply	\$599.00

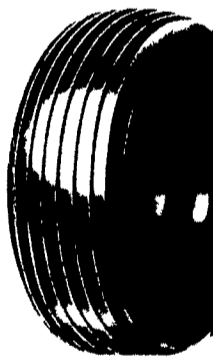
POWER MARK L/S RADIAL II Radial Rear Tractor Tire

- Radial performance at a significantly lower price
- New cavity shape for low carcass stress and long narrow footprint, improved durability
- Unique longbar/shortbar tread design with increased lug count for excellent roadability
- Continuous no splice tread improves tire uniformity and eliminates open tread splices
- Belt package gives excellent bruise and puncture resistance
- Engineered to full Tire and Rim dimensions
- Heavy duty trash shield for extra bead area protection with pry notch
- Size markings on lug face for easy identification in storage



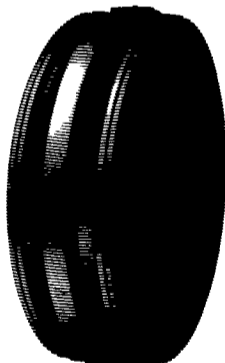
Size	PRICE
15.5R38 ★	\$349.00
18.4R34 ★	\$459.00
18.4R38 ★	\$499.00
20.8R38 ★	\$639.00

FARM UTILITY WAGON TIRES



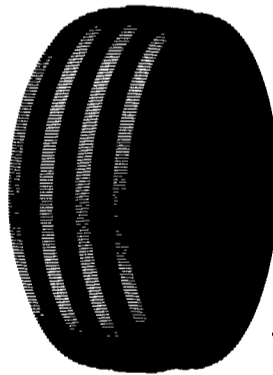
Size	Ply	Sale Price
9.5L-15	8 Ply	\$44.00
11L-15	8 Ply	\$45.00
11L-15	12 Ply	\$64.00
12.5L-15	10 Ply	\$72.00
12.5L-16	14 Ply	\$89.00

SAFEMARK PREMIUM 3 Rib



Size	Ply	Price
600-16	4 Ply	\$37.00
600-16	6 Ply	\$40.00
750-16	6 Ply	\$58.00
1000-16	8 Ply	\$83.00
1100-16	8 Ply	\$99.00

POWER GLIDE 4 Rib



Size	Ply	Price
9.5L-15	6 Ply	\$ 79.00
11L-15	8 Ply	\$ 99.00
750-16	6 Ply	\$ 71.00
1000-16	8 Ply	\$ 88.00
1100-16	8 Ply	\$115.00



BATTERY BARGAIN

\$47.00
5-26 515 AMPS

- Dependable performance in all weather conditions
- Unique billboard vent appearance

- Higher cranking than conventional batteries
- Sizes to fit most domestic and import cars and light trucks

FARM TRACTOR BATTERY

\$66.00

FC-30H 560 AMPS

- Rugged high impact case and cover for vibration resistance



- Increased starting power
- Built to last season after season
- Made in the USA

Participating SAFEMARK Dealers

- | | |
|---|--|
| Adams
Mar-Bar Tire Service
Hanover, PA 17331
(717) 633-6412 | Greene
Burns Tire Service
Waynesburg, PA 15370
412-627-8263 |
| Biglerville Tire & Auto
Biglerville, PA 17307
(717) 677-8338 | Lancaster
Leola Tire Service
Leola, PA 17540
(717) 656-2574 |
| Yinglings Implement
Gettysburg, PA 17325
(717) 359-4848 | Messick
Farm Equipment
Elizabethtown, PA
(717) 367-1319 |
| Blair
Ake's Mobile Service
Williamsburg, PA 16693
(814) 832-3251 | Rhoadstar Retreading
Quarryville, PA 17566
(717) 786-2178 |
| Rhode's Farm Supply
Williamsburg, PA 16693
(814) 832-2491 | Lebanon
Amtire Corp.
Palmyra, PA 17078
(717) 838-5491 |
| Bradford/Sullivan
Histand Farm & Home Service
Rome, PA 18837
(717) 744-2371 | Lebanon Valley Implement Co., Inc.
Richland, PA 17087
(717) 866-7518 |
| Bradford
Isaac's Tire Sales
Canton, PA 17724
(717) 673-8121 | Lehigh Co.
Kermit K. Kistler
Lynnport, PA 18066
(215) 298-2011 |
| Centre
Dunkle & Grieb
Centre Hall, PA 16828
(814) 364-1421 | Joe's Battery & Tire
Allentown, PA 18103
(215) 437-4961 |
| Chester/Delaware
J&L Tire Service
Chatham, PA 19318
(215) 869-0450 | Mifflin
Miller-Lake, Inc.
Belleville, PA 17004
(717) 935-2335 |
| S.G. Lewis & Sons
West Grove, PA 19390
(215) 869-2214 | Northampton/Monroe
Northampton Farm Bureau
Tatamy, PA 18085
(215) 759-3254 |
| Stoltzfus Farm Service
Cochranville, PA 19330
(215) 593-2407/2408 | Northumberland
Rovendale Supply
Watsonstown, PA 17777
717-538-5521
717-742-7521 |
| Clinton
Dotterer Equipment, Inc.
Mill Hall, PA 17751
(717) 726-3471 | Schuylkill
Charles Snyder, Inc.
Tamaqua, PA 18252
(717) 386-5945 |
| Columbia
Steve Shannon Tire Co., Inc.
Bloomsburg, PA 17815
(800) 343-TIRE | Somerset
Maple City Tire
Meyersdale, PA 15552
(814) 634-0545 |
| Yost Tire & Auto Center
Rte. 487, Benton, PA
(717) 925-2821 | Union
Mifflinburg Farm Supply, Inc.
Mifflinburg, PA 17844
(717) 966-3114/3115 |
| Cumberland
Barrick Tire Sales
Newville, PA 17241
(717) 776-5762 | Washington
Canonsburg Supply & Equipment Co., Inc.
Canonsburg, PA 15317
(412) 746-2500 |
| Erie
Mike's Auto Repair
North East, PA 16428
(814) 725-9091 | David Cowden
Avella, PA 15312
(412) 587-3225 |
| Franklin
Forrester Farm Equip., LTD
Chambersburg, PA 17201
717-263-0705 | Wayne
Pleasant Mt. Tire Supply
Pleasant Mt., Pa.
(717) 448-2054 |
| Stoneham's
Waynesboro, PA 17268
(717) 762-3614 | Wyoming Co.
J. Roberts & Son Tire Co.
Meshoppen, PA 18630
(717) 833-5582 |
| Bruce B. Gamble & Sons
Concord, PA 17217
(717) 349-2670 | York Co.
AI Tire Co., Inc.
York, PA 17454
(717) 792-0332 |
| Fulton
Clugston Farm Equipment
Needmore, PA 17238
(717) 573-2215 | Corn Hill Farm, Inc.
Eiters, PA 17319
(717) 938-2012 |



SAFEMARK

Division of Pennsylvania Farm Bureau

Camp Hill, PA 17011

CALL TOLL FREE

1-800-PFA-TIRE

For Dealer Nearest You

A Proud Tradition of Quality, Value and Service.

- QUALITY
- SERVICE

- DEPENDABILITY
- ECONOMY

NOW SERVING NEW YORK, NEW JERSEY & CONNECTICUT