

1971 Diamond Reo, tandem dump, double frame, 671 rebuilt engine, ready to work. 301-842-3543.

1973 Barber Greene SA-35, 10-14' screed w/ hyd. extensions, excellent condition. (215)723-3162.

1986 580E cab, extend-a-hoe; 1974 941 Cat, track loader; 1972 Reo tandem dump; 1984 20 ton trailer. Misc. construction equipment. Serious inquiries only. 609-447-4169 after 5PM.

1991 580C Case extend hoe back hoe, 1135 hours, like new! 717/875-4540.

843 Bobcat, low hrs., some attachments 410-329-6757.

89 Fiat Allis FR9B turbo, wheel loader w/ quick cuppler, forks, bucket, spare parts and filters, under 2000 hours, like new, \$50,000. (717)382-4113.

Bobcat T-116 walk behind trencher, 3 feet digging dept., excellent condition, low hours, \$3000. Phone 814/627-0158 or 814/696-4151.

CAT Motor Grader, Model 112, Pony Start, 12' Blade, Enclosed Cab, Scarisier, Good Mechanical Condition. \$2600. 304-876-6653 Evenings.

Hyster 2500 lb. forklift, LP, PS, working order but has engine blowby. \$2500. 717-943-7655.

John Deere 1010 bulldozer, diesel, breaking up for parts, low hrs. Delaware 215-494-4206

New Ford BSD 444T, turbo 268 cu.in. diesel engine with radiator, hydraulic pump, alternator, \$3000. Call 717-569-3359.

TD9-1948 dozer, runs good, with winch, gas diesel, \$3,000. Clinton. (717)923-0769.

Thin-line mortar pump for repointing bricks, used very little, must sell. \$3700 new, sell for \$2800 OBO. 215/593-1172.

WANTED: 18' Steel Dump Body, Must be Good. 215-663-9221.

WANTED: 955H 60A Pedal Steer, Must be in Good Condition. 215-663-9221 After 6PM.

WANT TO BUY all makes and models of construction equipment. (301)694-6148, (301)371-9299 fax.

WHEEL LOADER CASE W24, 4 in 1 bucket, rebuilt motor, forks, \$10,500. 410-833-9091

CAT 955K track loader, 1985, 80% U/C, very good condition, \$22,000. OBO 215-257-4666.

Case 455C loader, cab, 4-way bucket, 200 hrs. Priced to sell. Call 410-658-3457 Cecil, MD.

Coleman Generator, 7,000 watt, special price includes 35% discount, \$1,488. Other models available. Martin Hardware, Schaefersstown, Lebanon Co., PA (717)949-6817.

CRAWLER LOADER AC-HD-5G Loader, good engine, good U/C, rebuilt steering and master clutch, good condition throughout-\$3,500. BALANDA EQUIPMENT P.O. Box 407 RT 29 Palm, PA 18070. 1-800-322-8030

CRAWLER LOADER CAT 951B, good condition, ROPS, \$9,500. 410-833-9091

CRAWLER LOADER CAT 977K w/ROPS, \$13,000. 410-833-9091

DISMANTLING FOR PARTS: Just arrived for parts: Fiat Allis FL-10C, 2 good final drives, OROPS, many good parts available. BALANDA EQUIPMENT P.O. Box 407 RT 29 Palm, PA 18070. 1-800-322-8030

FORKLIFTS- gas and electric, all sizes, financing considered. 304/229-5811 or 703/888-4403 after hours.

Homelite Textron hi-cycle portable generator, model 190HY50-1, AC 5000, DC 2500, 180hz, 3ph, 3600 RPM, gas engine. 215-926-9147.

HIGH TENSILE FENCE SPECIAL: 1 slot crimping tool for 1/4 length sleeves, includes bolt cutter, \$25. No guarantee. KENCOVE FARM FENCE. 412-459-8991; 1-800-245-6902.

WINCO 12.5KW diesel gen. set, 425 actual hours, \$4,000. CATERPILLAR 941 CRAWLER LOADER, \$10,000. H.E.L.P. Inc. (717)469-0039 (800)446-0505.

FORKLIFTS
2,000 to 15,000 Lb.
\$1,000 to \$12,000
Gas/LP-Diesel-Electric
Cushion-Pneumatic-Rough Terrain
New Komatsu Forklifts Available
PA INDUSTRIAL EQUIPMENT
(215) 326-7090

Case 252, 602, 1102 Rollers Demonstrators
Call For Special Pricing

1988 Eager Beaver 9 ton triaxle.....\$2,850
1991 Case 590, cab, extend-a-hoe, 4WD, 1000 hours.....\$49,900
Case 1455B Loader w/clearing rake, excellent condition\$36,900
1985 Case 1080 excavator, approx. 2200 hrs\$37,500

Vernon E. Stup Co.
5859 Urbana Pike
Frederick, Md. 21701
301-663-3185

WENGBERS, INC.
251 South Race St., Myerstown, PA 17067
717-866-2130

NIGHTS, PHONE:
717-866-7147
717-273-9089

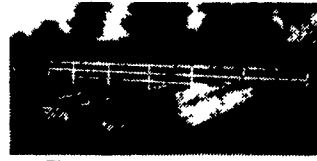
FAX
717-866-4300

HOURS: Mon.-Fri. 7:30 to 5:00; Sat. 7:30 To Noon



1979 General 3 Axle Tag-A-Long Trailer, 24,000 GVW, 15' Flat Ramps, 3' Beavertail.

\$1,850



25 Ton Hyster Lowboy, Will Take Tandem Tractor, 8.25x15 Tires, Beavertail, Good Condition.

\$4,900



Transport 35 Ton Detachable Trailer, Pony Motor, 15" Tires, Good Condition, Non-Ground Bearing.

\$9,900



1992 New 5 Ton Tag-A-Long, All Wheel Brakes, Adjustable Hitch, Adjustable Ramps, 16' Bed.

\$1,995



Gallon 503 Grader, Gas, Looks Good, Runs Nice.

\$4,900



Insley H1000 Excavator, Excellent Undercarriage, GM Diesel, Runs Good, Good Bucket, Reasonable.

\$13,500



1977 Versatile 150 Bi-Directional 4WD, 3 Pt., PTO, Cab, Perkins Diesel w/Loader.

\$9,500



Komatsu D65E Dozer, Good U/C, New Paint, Runs Good.

\$18,500

PARTS PRICED RIGHT
DISMANTLING MOST MAKES & MODELS
OF CONSTRUCTION EQUIPMENT

Cat IHC Gallon
Case Michigan Wabco
John Deere Michigan Dynahoe
Trojan Terex Koehring
Drott Hein Werner AC/Flat Allis & Others

Over 600 Machines Dismantled

NATIONWIDE PARTS LOCATING SERVICE
We have two Computer Parts Locator Networks. Nationwide & Canada, ready to serve you. In less than a minute over 400 Used & New Parts Dealers will receive your parts request. Parts are located easily & at substantial savings. Try Our Services.

Save \$\$\$ Parts Shipped Anywhere Direct To You. All Parts Guaranteed
"We Return All Phone Calls"

BALANDA EQUIPMENT CO., INC.

P.O. Box 407 • Route 29 • Palm, PA 18070
Phone: (215) 679-3900
• Fax: (215) 679-8727

TOLL FREE: 1-800-322-8030

FORKLIFTS

Baker	5000 lb. Solid Tire LP Gas
Massey Ferguson	6000 lb. Rough Terrain Diesel
Ross	15000 lb. Pneumatic Gasoline
Yale	8000 lb. Pneumatic Diesel
Hyster	4000 lb. Pneumatic Diesel
Hyster	2000 lb. Pneumatic LP Gas
Clark	4000 lb. Solid Tire Electric
Yale	6000 lb. Solid Tire Electric
Hyster	6000 lb. Solid Tire Electric
Yale	4000 lb. Solid Tire Electric
Yale	3000 lb. Solid Tire LP Gas
Pettibone	4000 lb. Solid Tire Electric
Clark	3000 lb. Solid Tire Gasoline
Baker	4000 lb. Solid Tire LP Gas

Other Lifts Available
Several Used Pallet Jacks
Financing Considered

SHADE
Lift Trucks
Dennis L. Shade
304/229-5811
703/888-4403

Volkswagon Jetta's

87 GL- 5 Speed- Sunroof
\$4,300

88 GL- 5 Speed- Sunroof
\$6,200



DOZERS

IH TD5 - Winch - No Blade\$2,200
MF 200 - 6 Way\$8,900
JD 450C - 6 Way - 1979\$11,500
JD 450B - 6 Way - ROPS - 1973\$12,500
IH TD7E - 6 Way - 1984\$16,500
Komatsu D65E - ROPS - 1976.....\$18,500

BACKHOES

Hoe AttachmentsFrom \$2,000
JD 300 Diesel - 1968\$7,900
JD 410 - ROPS - 1977\$8,500
IH 270A - 1979 - Diesel\$8,900
JD 310A - Cab - 1977.....\$10,900
JD 410 - Cab - 1978.....\$10,800
JD 500C - ROPS - 1979.....\$11,500
Dynahoe 200B - 4x4 - Big.....\$15,000
JD 310B - ROPS - 1985.....\$16,500
JD 510 - Cab - 79.....\$16,500
JD 410B - Cab - Ext - 1986.....\$21,500
Case 580K - Cab - Ext - 1987.....\$24,500

TRUCKS/CARS

1977 Ford F350 28' Bucket Truck.....\$3,900
1972 Ford F600 Dump - Gas.....\$3,900
1987 Volkswagon Jetta GL-5 Speed.....\$4,300
1988 Volkswagon Jetta GL-5 Speed.....\$6,200
1989 Acura Legend L Sedan-Auto.....\$15,700

LOG SKIDDERS

Clark 666B - Diesel - 1977\$8,900
JD 440A - Diesel - 1970.....\$8,900
JD 440C - Diesel - 1980.....\$22,500

TRACTORS WITH LOADERS

Versatile 150 - 4x4 - 3 Pt. - PTO - 1977\$9,500

FORKLIFTS

Baker 4000 Lb. - Gas - Air Tires.....\$3,900
TCM 3000 Lb. - Gas - Air Tires.....\$8,900

MISCELLANEOUS CONSTRUCTION

(50) New & Used Hoe Buckets.....COME SEE
(50) Loader Buckets.....COME SEE
(50) Set Forklift Forks.....COME SEE
(2) Tree Planter.....\$795-\$995
Giant Leaf Vacuum.....\$900
(2) Cinder Spreader - Each.....\$1,000
Ripper For Crawler.....\$1,000
Root Rake - 7' - New.....\$1,200
1 Ton Roller - Vib. - Gas.....\$1,350
Sweeper - Pull Type - Gas.....\$1,800
Case 1 Ton Roller.....\$2,300
Schramm 160 Air Comp.....\$3,000
Large Snowblower For Loader.....\$3,000
Vermeer Stump Grinder.....\$3,500
IH 140 w/Power Broom- 1972.....\$3,900
Sullair 185 Diesel Air Compressor.....\$8,900
JD 5010 Scraper.....\$3,900
(6) Sheeps Foot 2 Drum Roller.....\$2,500/\$4,500
Woodchuck 16" Chipper.....\$4,900
Gallon 503 Grader - Gas.....\$4,900
Advance Retriever 5600D Sweeper.....\$5,900
(2) 1R 185 Diesel Compressor - 1989.....\$6,500-\$7,500
Huber 1500 Grader - Diesel.....\$7,900
1R 160 Diesel Compressor - 1990.....\$8,500
Advance Retriever 6600G Sweeper.....\$8,900
IR 185 Diesel Air Compressor - 1992.....\$9,500
JD 760 Scraper.....\$9,900
Insley H1000 Excavator- 1974.....\$13,500
(2) Tampo RS28B 84" Vib. Roller.....\$15,500-\$17,500
JD 690B Excavator - 1977.....\$19,500

CRAWLER LOADERS

JD 450 - 1966 - Diesel.....\$5,000
JD 350 Diesel - ROPS - 1969.....\$6,500
JD 450B - ROPS - 1972.....\$8,900
Cat 977K - ROPS - 1970.....\$9,500
JD 350C - With Hoe - 1977.....\$11,500
Cat 941B - 1974 - 4 in 1 - ROPS.....\$15,500
Cat 951C - ROPS - 1974.....\$16,500
Case 1150C - ROPS - 1981.....\$18,500
Case 455C - ROPS - 1986.....\$21,500
Case 1155D - 4NI - 1983.....\$24,500
CAT 983 - Cab - 1969.....\$33,500
JD 755B - ROPS - 1986.....\$35,000

TRAILERS

1979 3 Axle Tag-A-Long - 12 Ton - 8x18.....\$1,850
(2) 1992 5 Ton Tag-A-Long - 6x16.....\$1,995
1993 5 Ton Tag-A-Long - 6x16.....\$2,095
(5) 1993 5 Ton Tag-A-Long - 6x18.....\$2,195
1977 2 Axle 7 Ton Tag-A-Long - 8x18.....\$2,400
1978 3 Axle 11 Ton Tag-A-Long - 8x18.....\$2,700
2 Axle 12 Ton Tag-A-Long - 8x17.....\$2,900
18 Ton Tag-A-Long - 8x21.....\$2,900
1993 5 Ton Tag-A-Long - 8x18.....\$3,250
13 Ton 3 Axle Tag-A-Long - 8x20.....\$3,400
1984 11 Ton Tag-A-Long - 8x20.....\$3,500
Rogers 35 Ton Lowboy - 8x27.....\$3,900
Hyster 25 Ton LowBoy - 8x27.....\$4,900
1992 9 Ton Tag-A-Long - 8x24.....\$5,850
1992 10 Ton Tag-A-Long - 8x24.....\$6,450
1973 Transport 35 Ton Detachable - 8x25.....\$9,900

SKID LOADERS

Toyota SGK6 - Gas - 1988.....\$6,500
Case 1835 - Diesel - 1982.....\$7,500
Gehl 4610 - Diesel.....\$7,500
Bobcat 743 Diesel - 1983.....\$7,900
Case 1818 Diesel - Demo.....\$7,900
JD 575 - Diesel - 1986.....\$7,900
Bobcat 743 Diesel - 1987.....\$8,900
Case 1835C - Diesel - 1991.....\$9,500

RUBBER TIRE LOADERS

Hough 90 Diesel - 1959 - 2.5 Yd.....\$2,000
Versatile 150 - Cab - 1977 - 1.25 Yd.....\$9,500
Cat 920 - Cab - 1972.....\$16,500
JD 544A - Cab - 2 Yd. - 1971.....\$17,500
Case W18 - Cab - 1978.....\$18,500
Case W20 - Cab - 1978 - 2 Yd.....\$18,500