

Keister's Middleburg Auction

Middleburg, Pa.

Tuesday, June 1, 1993

Report Supplied by PDA

CATTLE 283... PDA. Compared to last Tuesday's market: sl. steers steady to 1.50 lower; sl. cows mostly weak to 1.50 lower. **STEERS:** Choice 1100/1475 lbs. 76.00-80.75, one at 81.75, few Select 70.75-75.00. **HOLSTEINS:** few Choice 69.25-72.50, few Select 65.00-69.00. **HEIFERS:** Choice 75.00-80.00, couple Choice Holsteins 71.50 & 72.25, few Select 66.00-73.00. **COWS:** Breaking Utility and Commercial 49.50-54.50, couple to 56.00, Cutter & Bon. Utility 49.50-54.75, couple 56.50, Canner and Low Cutter 44.50-48.50. Shells down to 41.25. **BULLOCKS:** couple Choice 69.25 & 70.00. **BULLS:** few Yield Grade No. 1 1140/2165 lbs. 59.75-68.00, few No. 2 865/1035 lbs. 54.50-58.00. **FEEDER CATTLE:** few Medium Frame No. 1 490/680 lbs. heifers 70.00-84.00.

CALVES 205..VEALERS: few Standard and Good 80/95 lbs. 60.00-63.00. **RETURNED TO FARM:** No. 1 Holstein bulls 90/125 lbs. 155.00-190.00, No. 2 85/120 lbs. 100.00-150.00, few down to 80.00; No. 1 Holstein heifers 85/110 lbs. 175.00-207.50. Few Beef cross 75/150 lbs. bulls and heifers 115.00-160.00.

HOGS 474... (05/31 & 06/01/93)..Barrows and gilts .25 to 1.50 lower. **BARROWS AND GILTS:** US No. 1 225/250 lbs. 49.50-51.75, No. 1-2 220/250 lbs. 46.50-49.25, 1-3 210/300 lbs. 42.00-46.25, few lightweights 180/200 lbs. 38.00-41.50. **SOWS:** US 1-3 450/650 lbs. 36.00-40.50, 300/400 lbs. 30.00-35.75. **BOARS:** 32.00-34.00. **FEEDER PIGS** 233...US 1-3 25/55 lbs. 30.00-47.00. - all per head.

SHEEP 69...Choice 35/90 lbs. Spring sl. lambs 64.00-74.00, couple 25 lbs. 85.00 & 90.00. Slaughter sheep: 29.00-44.00. **GOATS** 29...Large 38.00-60.00, Kids 20.00-38.00.---- all per head.

Oklahoma City Feeder Cattle

Oklahoma City, Okla.
Tuesday, June 1, 1993

Oklahoma City Wednesday week. Demand good with active trade on better quality cattle, moderate demand for plainer end. Quality of supply plain to attractive with percentage of plain cattle greater than last week. Flesh condition slightly thin to average and more attractive to buyers. Weigh-ups improved for buyers and average. Bulk receipts 600-925 lb. steers. Weather remains clear and temperate to warm; ideal for upcoming wheat harvest. Slaughter cows and bulls steady with good demand. Receipts this holiday shortened week 6,550; last week 14,922; last year 7,533. Supply consisted of 79% feeders and stockers over 600 lbs.; 13% calves and light yearlings under 600 lbs.; 8% cows and bulls. Bulk price ranges follow with weighted averages in parenthesis.

Feeder Steers: Medium and Large Frame 1, 370-400 lbs. \$116.00-\$124.50; few 425-450 lbs. \$103.50-\$109.50; 500-550 lbs. \$98.50-\$105.50 (\$101.92); 550-600 lbs. \$95.00-\$99.50 (\$96.95); 600-650 lbs. \$93.00-\$101.75 (\$97.65); 650-700 lbs. \$88.50-\$93.25 (\$90.75); 700-800 lbs. \$84.75-\$88.50 (\$86.88); 800-900 lbs. \$82.50-\$86.75 (\$84.56); 900-975 lbs. \$80.25-\$82.25 (\$80.40).

Feeder Heifers: Medium and Large Frame 1, few 325-425 lbs. \$98.00-\$105.00; 450-500 lbs. \$89.50-\$93.75 (\$92.97); 500-550 lbs. \$88.00-\$94.75 (\$91.21); 550-600 lbs. \$85.00-\$88.50 (\$88.00); 600-700 lbs.

\$84.00-\$90.75 (\$86.34); 700-800 lbs. \$81.75-\$84.00 (\$83.25); 800-875 lbs. \$78.00-\$80.25.

Slaughter Cows: Cutter, Boning and Breaking Utility Y.G. 1-3 average dressing \$46.50-\$49.00; high dressing \$50.00-\$54.75.

Slaughter Bulls: Y.G. 1 1300-1800 lbs. average dressing \$58.00-\$60.50; high dressing \$62.00-\$62.50; high dressing and high boning absent.

Aberdeen Sales Company, Inc.

Complete Auction & Appraisal Service
Churchville, Md.

Wednesday, June 2, 1993

SLAUGHTER STEERS: MARKET 2.00 LOWER. CHOICE 2-4 1100-1400 LBS. 77.00-81.00; SELECT & LOW CHOICE 1000-1500 LBS. 69.00-76.00; HOL. STEERS HI CHOICE & PRIME 1250-1400 LBS. 69.00-72.00; CHOICE 1200-1500 LBS. 68.00-71.00; SELECT ALL WEIGHTS 59.00-65.00.

SLAUGHTER HEIFERS: MARKET 2.00 LOWER. CHOICE & PRIME 950-1300 LBS. 76.00-79.50; SELECT ALL WEIGHTS 900-1400 LBS. 65.00-73.00.

COWS: MARKET 1.00 LOWER. BRK. UT. & COMM. 2-4 BULK 49.00-52.00; HI DRESSING 52.00-56.00; CUTTER & BON. UT. 47.00-49.00; HI DRESSING 50.00-53.00; CANNER & CUTTERS 45.00-48.00; LOW DRESSING 44.00 DOWN.

BULLS: MARKET 2.00 LOWER. ALL WEIGHTS 1100-1900 LBS. 59.00-70.00.

VEAL CALVES: MARKET STEADY. CHOICE AND PRIME 200-400 LBS. 77.00-96.00; HI GOOD AND LOW CHOICE ALL WEIGHTS 63.00-82.00. **FARM CALVES:** MARKET STEADY.

HOL. BULLS 100-125 LBS. 140.00-185.00; HOL. BULLS 85-95 LBS. 135.00-155.00; HOL. HEIFER CALVES 100-120 LBS. 160.00-195.00; SMALL FRAME 70-105 LBS. 120.00-160.00; **SLAUGHTER CALVES** ALL WEIGHTS 47.00-59.00.

FEEDER CATTLE: MARKET STEADY. BULLS & STEERS 400-900 LBS. 68.00-93.00; HEIFERS 300-700 LBS. 62.00-87.00.

LAMBS: MARKET 4.10 LOWER. CHOICE & PRIME 90-110 LBS. 69.00-73.00; LIGHTER LAMBS 65.00-80.00; EWES - HEAVY 22.00-33.00; EWES - LIGHT 28.00-44.00. **GOATS:** MARKET STEADY. SMALL 15.00-30.00; MEDIUM 30.00-60.00; LARGE 60.00-100.00.

HOGS: MARKET STEADY. 210-250 LBS. 45.00-48.00; 255-300 LBS. 40.00-48.00; SOWS - HEAVY 39.00-43.00; SOWS - LIGHT 34.00-39.00; **BOARS** ALL WEIGHTS 30.00-32.00.

Shenandoah Valley Livestock

Harrisonburg, Va.

May 29, 1993

Report supplied by auction

STEERS: M&L-1 300-500 LBS. 95.00-121.00; 500-700 LBS. 90.00-94.50; 700-1000 LBS. 75.00-86.50; HOLSTEIN 300-500 LBS. 95.00 AND DOWN.

FEEDER BULLS: 300-500 LBS. 85.00-97.00; 500-700 LBS. 73.00-84.00; 700-800 LBS. 64.00-74.00.

HEIFERS: 300-500 LBS. 77.00-95.00; 500-700 LBS. 71.00-85.00; 700-1000 LBS. 62.00-84.00.

STOCK COWS: BEEF 950.00 AND DOWN; BABY CALVES, 140.00 AND DOWN.

Friend's Stockyard Inc.

Accident, Md. 21520

May 31, 1993

STOCK BULLS AND STEERS (200-500 LBS.) 70.00-110.00.

STOCK HEIFERS 65.00-95.00. **SLAUGHTER STEERS** GOOD TO CHOICE 75.00-79.75; MEDIUM TO GOOD 71.00-74.75; HEAVY CHOICE OVER 1450 LBS. 72.00-76.00.

HOLSTEIN STEERS HEAVY 60.00-65.00; LIGHT 56.00-63.50.

SLAUGHTER HEIFERS GOOD TO CHOICE 72.00-75.25; MEDIUM TO GOOD 65.00-71.50.

BULLS HEAVY 58.00-70.00, LIGHT 50.00-61.50.

COWS FEW HIGH DRESSING 54.00-60.00; UTILITY HOLSTEIN 48.50-56.00, CANNERS 44.00-52.00, COMMERCIAL TO GOOD 45.00-50.00, CULL COWS 44.00 AND DOWN.

VEALS GOOD TO CHOICE 72.00-120.00, MEDIUM TO GOOD 50.00-70.00.

BOB CALVES 40.00 AND DOWN.

HOLSTEIN BULL CALVES, RETURN TO FARM (90-120 LBS.) 120.00-180.00.

HOLSTEIN HEIFER CALVES, RETURN TO FARM (100-120 LBS.) 150.00-200.00.

BEEF X CALVES, RETURN TO FARM, UP TO 165.00.

HOGS: TOP QUALITY 48.60-49.60, HEAVY 47.50-48.25, LIGHT 37.00-45.00.

SOWS 30.00-34.50. **MALE HOGS:** 27.00-35.00. **LAMBS:** 72.00-80.00. **SHEEP:** 18.00-25.00.

LIVESTOCK PRICES ARE ALL GIVEN PER HUNDREDWEIGHT!



Let Your Crops Dine On Alpine

The Company That Offers You High Quality Plant Food At Competitive Prices

Talk To Us About Seed Banded Plant Food And Follar Feeding

Place Phosphorus Where It Does Most Good (Seed Banded)

6-24-6 9-18-9 3-18-18 5-15-15
Check Early Order & Quantity Price

Zimmerman Lime & Fertilizer, Inc.
(717) 733-7674

235 W. Burkholder Dr.

Lititz, PA 17543

DeMuth AGRI-PRODUCTS

"More than 70 years Service to the Dairy Industry"

Single Chain Conveyor



Also Available BELT CONVEYORS

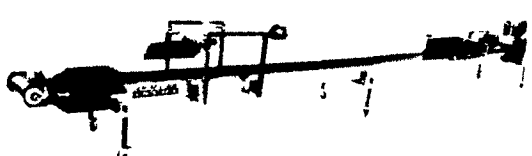
DEMUTH Single Chain Conveyors combine the best features of other conveyors on the market with the highest quality heavy-duty construction to ensure years of dependable service. Conveyors are all-bolted construction (not riveted) which means additional sections can be added or removed quickly and easily.

Belt Feeder

- 14" PVC Belt
- Heavy duty gear box type drive assembly
- Long-lasting polypropylene drive cable

- 14 gauge galvanized steel construction
- Plow carriage glides on UHMW polyethylene blocks

Also Available EXPRESS FEEDERS



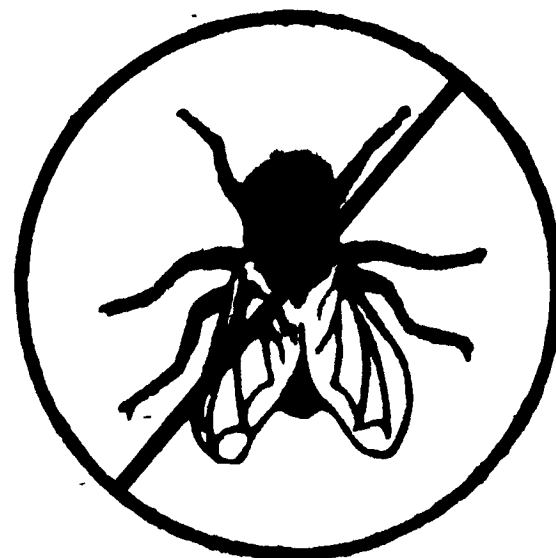
RECEIVE 10% OFF ON EITHER ITEM WITH THIS AD OFFER EXPIRES 9/1/93

DEALER INQUIRIES WELCOME

DeMuth AGRI-PRODUCTS

85 S. Groffdale Rd.
Leola, PA 17540
PHONE: (717) 656-4295
FAX: (717) 656-3289

HESMILLS



"STOP FLIES BEFORE THEY GET STARTED"

Call Hess Mills for all your Purina fly control products.

Big Discounts For Early Orders

Example: Easy Duster Dust Bags 18% Off Reg. Price

HESMILLS

PURINA CHOWS

6 S. Vintage Rd.
Paradise, PA 17562
(717) 442-4183
(717) 768-3301

Rt. 82
Unionville, PA 18375
(215) 347-2377

™ Trademark of Purina Mills

* Registered trademark of Ralston Purina Company