

**550 ACRE non-operating dairy/beef farm with approx. 300 tillable large barn, good 4 BR house.**  
Steal.....\$119,900

**155 ACRE DAIRY** 125 tillable, excellent barn, ready to milk, Nu-Pulse pipeline, 40 cow ties, beautiful 6BR house, asking .....\$139,000  
Owner financing w/40K down.

**210 ACRE DAIRY** It's a bit of a fixer upper but with a good barn and solid 3BR house it's still a good deal at.....\$79,000

**FINLEY REAL ESTATE**  
207 Montgomery St.  
Ogdensburg, NY 13669  
315-393-6325

**CENTRAL PENNSYLVANIA FARMS, FARMETTES, LAND AND CABINS**

Our Farm and Land Division currently has many farms, farmettes, land parcels, and cabins available in central Pennsylvania. We would be happy to send you a free farm and farmette list and/or rural land and cabin list.

See the May 29th or April 24th issues for a complete farm and farmette inventory.

Farm and Land Division

Fred Strouse (814) 364-1705  
Mel Rocky (814) 466-6688  
Terry Ginger (814) 364-1169



245 S. Allen St.,  
State College, PA 16801  
(814) 234-4000  
1-800-876-3395

**POTTER COUNTY**

**#24 PEACE AND QUIET** - Best describe the setting for this country property. Situated on a wooded, level, five acre parcel in Hebron Township, this quality house features low maintenance and comfortable living. The 1200 plus square foot house has a large living room, kitchen with oak cabinets, two large bedrooms and 1 1/2 baths. Built on a full basement. Call today to view this new listing. Asking \$77,900.

**#27 REDUCED! COZY CEDAR LOG CABIN** - Situate on 4.97 acres nice area, good access, nice front deck. 2 bedrooms, some furnishings stay. Asking - \$29,900.

**#34 MOUNTAIN GET-AWAY** - Cute restored log cabin on approximately 2 acres of hardwoods and pines. One room original concept - living, kitchen, and bedroom areas with attached bath, well, on-lot septic, hard surface road, furnishings included. Inexpensive to maintain.

**#46 QUIET COUNTRY SETTING** - Five wooded acres provide the private location for this three year old home or recreational cabin. Low maintenance and quality materials combine to create this haven for year round enjoyment. Reduced to \$62,500. Make arrangements for your personal inspection today.

**#7 SOUTHERN POTTER COUNTY LOG HOME BORDERING STATE FOREST** - Beautiful four year old log home on 9.69 acres. Secluded location with lots of fruit trees. 28'x40' log home with 8'x40' covered porch, on full basement. Two or three bedrooms - 1 1/2 baths, large living room with cathedral ceiling. Wall to wall carpet. Well insulated. Hard road access. Reduced to \$84,900.

**#80 BORDERING STATE LANDS** - This 57.6 acres in Central Potter County is all wooded; has a small brook meandering through the hemlocks; overlooks the Allegheny River; and, best of all, borders State Lands on two sides. Old mobile home with addition - fix it up or replace it - you decide. Spring water, septic system, electric, \$49,500.

**TRAIL'S END REALTY**  
Route 6 & Route 872  
Coudersport, Pennsylvania 16915  
Telephone: (814) 274-7701

**TO SELL FARMS IN EASTERN PENNSYLVANIA CALL**

**HERSHEY FARM AGENCY, INC.**  
Thomas L. Hershey, Realtor Associate  
Hiram Hershey, Realtor/Broker  
1-800-346-0505 (PA only)  
215-287-8888

**BEAUTIFUL FINGER LAKES AREA**

**BATH N.Y.** 19.6 acs. Cape Cod, 3-4 bdms, kitchen, living rm, (2) 2 story barns, river bottom \$84,900 #3362.

**TOWN OF HOWARD:** 2 Story House w/3-4 bdms, 3 buildings, 2 garages, view, 145 acres, level, \$149,500 #3235.

**BEEF FARM:** 200 acs, 5 bdrm house, new foundation on barn, creek, 8 acs pond, wooded, \$169,500 #3352.

**120 ACS TOWN OF COHOCTON:** Year round creek, wooded, level 4 bdrm farm house, main barn, 35 cow ties, water piped cups pipeline milkers, s.s. bulk tank 600 gal., machine barn \$120K #3343.

**REXVILLE N.Y.:** 216 acs. farmette, dairy barn 40x120 attach: 2 story original barn w/heifer shed, also 2 metal bldgs., charming 16 yr. old 4-5 bdrm house, \$195K #3344.

**TOWN OF AVOCA:** 240 acs. level, 175 ac. till, barns 1) 40x44 2) pole barn w/new metal roof 88x150 3) main barn 38x120 w/20 stalls, 5 bdrm house, \$325K #3345.

**TOWN OF DUNDEE:** 660 acs. 120 cows, 75 young stock, main barn 50x100, 14 rm. house, tenant house 3 bdrm, 376+ acs till, dairy farm. \$719K #3357.

**TOWN OF CAMERON:** 200 acs, beef farm, older farm house 5 bdms, 40 cows main barn 32x80 67A wooded, 8A pond stocked, \$169,500. #3352.

**MAKITRA REAL ESTATE INC. GALLERY OF HOMES**

National Advertising National Relocation Service  
4 West Steuben St. Bath, N.Y. 14810



(607) 776-6665  
FAX (607) 776-6301



Needmore, Penna. - \$94,900

Operating USDA butcher shop/slaughter house on 8 acres with large barn-Along Rt. 522, just a few minutes N of I70. Great location for a farmers market, meat market operation. Can buy butcher shop or barn and acreage separately.



Orbisonia, Penna. - \$159,000

119 ac., 50 tillable, very private and secluded. Great hunting area. Circa 1850's dwelling with five bedrooms. Spring water, great pond site and possible landing strip. A must see to appreciate.



Fulton Co. - Pa. \$325,000

91 acre operating dairy farm with double 4 herringbone parlor, auto weigh jars & feeders, treatment room 1000 gal. tank, 2-20x60 concrete stave silos, 2-smaller silos, 80 cow free stall barn (nearly new), new heifer barn, and many other outbuildings.

Leases 100 neighboring acres. Two drilled wells 4 bedroom home is immaculate with new oak kitchen, central air and oil heat - Additional land available.

This is an exceptionally nice property and financing to a qualified buyer will be processed very quickly.

This farm is located in beautiful Buck Valley-Off I70.

**RE/MAX COUNTRY REALTY**  
203 L.W.E. McConnellsburg, Pa. 17233  
717-485-5911  
Ronald L. Richards-CRS, GRI  
717-485-4103

**36 REAL ESTATE**

**DEMERE REALTY**

Rte. 3 Box 91H  
Little Falls, NY 13365  
Phone & Fax (315) 823-0288  
George Demere, Broker



**#112 - 66 A. HOBBY FARM** w/30 tillable, now working dairy farm - could raise horses, beef or sheep - 3 silos, garage w/shop, mach. shed & good 8 rm. home - \$135,000.

**#164 - 249 A. DAIRY FARM** w/140 tillable - 52 on pipeline & 32 heifer stalls, mach. shed, lg. silo w/unloader, lots of water, 11 rm. colonial w/pool - \$325,000 w/cows & mach. or \$240,000 bare.

**#101 - 445 A. DAIRY FARM**, 150 tillable w/76 on pipeline, lots of woods, ponds, creeks - 9000 ft. road frontage - \$285,000.

**#108 - 250 A. DAIRY FARM** w/200 tillable - 110 cow free stall, 100x30 ft. bunk silo - like new 3 B.R. ranch home - \$299,000.

**#230 - 60 A. HOBBY FARM** 36x40 ft. horse barn w/6 stalls, tack rm. & hay storage above, small cow barn, new mach. shed & V.G. 5 rm. home w/new windows, furnace & deck - 2 creeks on property - EX value at \$99,800.

**#312 - 125 A. DAIRY FARM** - w/100 tillable - 52 cow barn w/addition for 20 heifers, lots of mach. storage, 2 silos, 2 ponds. 11 rm. home - \$138,000.

**#320 - 300 A. DAIRY FARM** w/200 tillable - 52 cows, on pipeline, lg. heifer barn, mach. shed w/shop, 4 silos - V.G. 3 B.R. Colonial home - \$280,000

**#308A - 154 A. DAIRY FARM** w/122 tillable - 2 story barn for 100 milkers & 60 heifers - 3 lg. silos w/unloaders, TMR, 2 wells, 3 ponds & 2 homes - \$225,000 - more land available.

FREE FARM LISTS AVAILABLE

**WESTERN PA FARMS**

**\$165,000**-81 acres - all tillable; 3 yr. old bldgs., 44 x 66 main barn w/ addition, 22x68 double herringbone milking parlor; heifer barn, machine shed; calf barn; grain bins. 3 bedroom 2 story home. Kinsman Rd.

**\$225,000** - 125 acre farm with extra large 2 family home. Large barn, indoor riding arena, Atlantic area.

**\$98,000** - 65 acre dairy farm with 3 bedroom 2 story home. 50x60 barn with 31 stanchions. Machine shed, silo, outbuildings. City water, 2 septic. Fredonia.

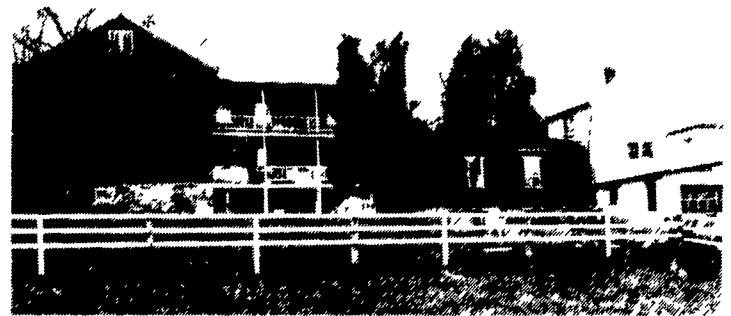


**\$95,000** - Dairy farm. 72x40 bank barn with attached milk house. 87 acres - 57 tillable, 27 pasture, 3 wooded. 2 silos, corn cribs, bulk tank. 4 bedroom 2 story frame home. Fredonia area. Reynolds schools.

**\$169,000** - Beef operation 183± acres. Land is mostly tillable, 30,000+ ft. field tile. 2 barns. Large 2 story farm house. Must see to appreciate this farm. Fredonia Area.

**LORENO REAL ESTATE (412) 588-2770**

**BEDFORD CO.**



• Near New Enterprise, Pa. 160+ Ac. Dairy Farm w/130 free stalls & milking parlor - 4 silos, very nice limestone soil - equip. shed & garage Dwelling = 13 rm brick - kit = 14'x27' & L.R. = 17'x33' - 2 baths & 2nd kit. 2nd Dwelling = 3 BR brck & frame Nice stream in pasture!! Call for fast personal service!!

Also:

• 178 Ac. dairy farm in S. Bedford w/100 free stall & 3 dwellings. Land lays nice - bldgs. need some repair. Priced to sell- Call today.

**LANCASTER CO.**

• 10 Ac. Horse Farm w/5 BR frame dwelling (new roof & vinyl siding), beaut oak kitchen - 2 horse barns.

**CUMBERLAND CO.**

• 151 Ac. w/huge 13 yr. old beauty brick 2 story & 54 x 120 equip shed & bank barn, grain bin, pond, etc. (Very nice setting).

• 152 Ac. - 65 cow dairy - equip. shed - 2 silos etc (Nice frame house)

Note: Possession Negotiable on all of these farms!

**MAHLON OBERHOLTZER AGENCY**

Your Central PA Farm Broker  
Smoketown, PA 17576 (Lanc Co.)

717-392-1177