

## Ebersole GMC Truck SELL-A-THON



**1992 GMC SIERRA TRUCK**  
AT, AC, V8, Tilt, Cruise, Pwr. Windows, Pwr. Locks, SLE Equip., 2-Tone Paint, Loaded  
MSRP - \$19,222.00  
Option Pak Discount - 1,575.00  
GMC Rebate - 500.00  
Ebersole Discount - 2,152.00  
Final Price **\$14,995**



**1993 GMC SIERRA 4x4**  
AT, AC, AM/FM Cass., Sliding Rear Window, Painted Rear Bumper, Bedliner, Full Size Spare #542449  
MSRP - \$18,372.00  
GMC Discount - 500.00  
GMC Rebate - 500.00  
Ebersole Discount - 840.00  
Final Price **\$16,532**

### Quality Preowned Trucks

\* Plus Many More Used Trucks To Choose From \*



**1991 GMC SEIRRA 4x4 TRUCK**  
AT, 350 V8, AC, Cruise, SLE Equip., AM/FM/Cass., 2 Tone Paint, Running Boards, Tilt, Towing Hitch, 8-Ft. Bed  
"EXCELLENT TOW VEHICLE"



**1992 GMC 3500 CUBE VAN**  
AT, AM/FM Radio, PS, 14 Ft. Box, AC  
"NICE TRUCK"

**Ebersole**

Pontiac - Oldsmobile - GMC Trucks

1900 Cumberland St.  
Lebanon, PA 17042

717-273-7611

'88 Chevy K30, 4x4, dually, 350 FI, auto, PB, PS, air, AM-FM, dual tanks, 10,000 GVW, 54,000 miles, 1 owner, \$10,900. 717-733-2873

'88 Ford F250 XLT Lariat, super cab w/8' fully enclosed Knapheide utility body, 351 EFI, auto, PB, PS, PW, PDL, cruise, tilt, air, 8,800 GVW, blue & silver, excellent condition, \$11,900. 717-733-2873

'89 Ford F250 HD, 3/4 ton, 4x4, 351 EFI, auto, PB, PS, AM-FM, dual tanks, 8,600 GVW, 48,000 miles, new radials, 1 owner, excellent condition, \$10,995. 717-733-2873

'90 Ford XL F150, 300 EFI, 5 spd., PS, PB, AM-FM cassette, dual tanks, new radials, 45,000 miles, black, excellent condition, \$8,300. 717-733-2873

'90 Ford XLT F350 4x4 diesel P/U, auto, PS, PB, AC, AM/FM, garage kept, never driven in snow, 28,000 miles, like new condition, \$17,900 201/694-0834.

### TRUCK BODIES & TRAILERS

- \* Dump Trailers
- \* 5 Different Types
- \* Flatbed Trailers 2000# to 20 Ton
- \* Livestock Trailers Steel & Aluminum
- \* Horse Trailers Bumper Pull & Gooseneck
- \* Flatbed Truck Bodies From 6' to 24' Long
- \* Dump Bodies Steel & Aluminum, Grain or Dirt
- \* Service Bodies Steel & Fiberglass
- \* Also Van Bodies, Hoists, Winches, Cranes, Tarps, Enclosed Trailers, Special Built Items



**Hostetler Truck Bodies & Trailers**  
Rt. 322 Millroy, PA 17063  
(717) 667-3921

Anthony Landis

AUTO BODY & SALES

1701 B Division Hwy.  
New Holland, PA • 717-355-0644

Specializing In Rebuilt Collision Damage Vehicles



'87 CELEBRITY SDN 2.5 AT, PS, PB, AC, TW, CC Cass. 64K, Needs Fender & Door, Runs & Drives \$1,500 w/Parts



'89 DAKOTA SE 4x4, 3.9 V6 5 Sp. Cass. 24K Only Needs Rear Axle, Fender Repaired Have Parts ..... \$5,200

**150**  
TRUCKS IN STOCK

# Overstocked With Trucks!

The Area's Best Selection Of Light & Heavy Duty Trucks On Sale Now!



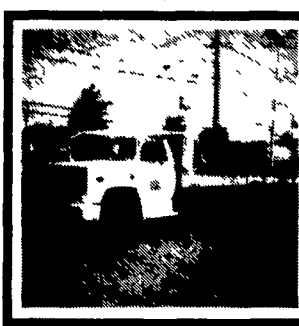
'69 GMC C-35 STAKE BODY  
V6 gas engine, 4 speed transmission, 4.10 rear, 10,000 GVW, flat bed / stake body #P8298

SALE PRICED **\$1,950**



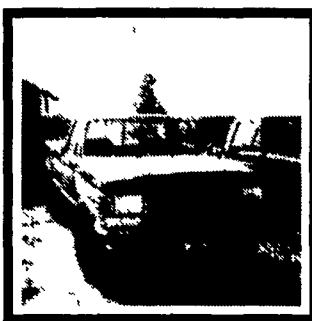
'84 IVECO 220 CHASSIS  
6 cylinder diesel engine, 5 speed transmission, pwr strg, pwr brks, AM/FM stereo, 14,800 GVW, runs good! #3126A

SALE PRICED **\$2,450**



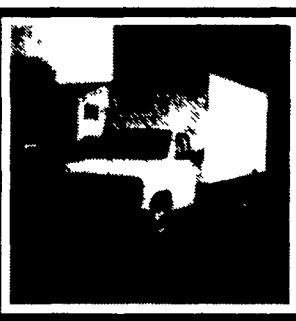
'73 CHEVY 65 SERIES FLATBED  
V8 gas engine, 5 speed transmission, pwr strg, air brakes, 2 speed rear, 30,000 GVW, 19ft alum flat bed/dump body, excellent all-purpose farm truck! #3115F

SALE PRICED **\$4,950**



'90 FORD F-250 HEAVY DUTY  
460 gas V8 engine, 5 speed trans, pwr strg & brks, pwr wind & lks, tilt strg whl, cruise, AM/FM stereo, 2-tone XLT trim, excellent for trailer towing, tarp, sharp! #F7709A

SALE PRICED **\$12,398**



'90 FORD E-350 PARCEL VAN  
351 V8 engine, auto W/ovdr trans, pwr strg, pwr brks, air conditioning, AM/FM stereo, 14ft box, only 29,000 miles! #P8303

SALE PRICED **\$13,992**



'90 FORD SUPER DUTY  
Diesel engine, auto W/ovdr trans, pwr strg, pwr brks, AM/FM stereo, contractor's dump body, Utility body sides w/ center dump, HD ladder racks, pinnel hook, more #F7526A

SALE PRICED **\$16,879**

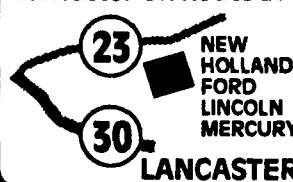
PRICES INCLUDE REBATES IF APPLICABLE TAX & TAGS ADDITIONAL

**New Holland FORD ISUZU**

**717-354-4901 • 800-642-8605**



Just 15 Minutes East Of Lancaster On Route 23



Route 23, New Holland, PA