

National Grain Market

St. Joseph, Mo.

Wednesday, May 26, 1993

WHEAT PRICES CONTINUED TO DECLINE, WEDNESDAY, ON IDEAS FOR BUMPER WINTER WHEAT YIELDS AND LET UP IN EXPORT PURCHASES; CORN PRICES INCHED HIGHER ON CONCERNS THAT CROP REDUCTION STILL POSSIBLE; SOYBEAN PRICES JUMPED MODERATELY ON REPORTS BRAZILIAN BEAN PRICES HIGHER, HARVEST DELAYS IN ARGENTINA AND EXPORT OPTIMISM. WHEAT 3 TO 6 CENTS LOWER. CORN UNCHANGED TO 1 CENT HIGHER. SORGHUM 1 TO 4 CENTS HIGHER. SOYBEANS 5 TO 6 CENTS HIGHER. WINTER WHEAT CROP LOOKING VERY GOOD AND POSSIBILITY FOR BUMPER YIELDS PRESSURED WHEAT PRICES. USDA REPORTS INDICATE WINTER WHEAT CONDITION RATED 58 PERCENT GOOD AND 17 PERCENT EXCELLENT. VERY LITTLE EXPORT ACTIVITY FOR WHEAT THIS WEEK, ADDED TO DECLINES. CORN PRICES TURNED SLIGHTLY HIGHER AS TRADERS WORRY THAT SWITCHING TO BEANS MAY STILL HAPPEN DUE TO THE LATE CORN PLANTING. USDA'S CROP PROGRESS REPORT SHOWED CORN PLANTED AS OF MAY 23, AT 71 PERCENT COMPLETE COMPARED TO 87 PERCENT THE NORM. LIGHT EXPORT DEMAND ALSO STRENGTHENED CORN PRICES. MODERATELY HIGHER SOYBEAN PRICES REFLECTED REPORTS OF HIGHER BEAN PRICES IN BRAZIL AND HARVEST DELAYS IN ARGENTINA. OPTIMISM FOR INCREASED EXPORT DEMAND FOR BEAN AND BEAN BY-PRODUCTS SUPPORTED PRICES.

EXPORT NEWS: SUB-SAHARAN AFRICAN NATIONS BOUGHT 25,000 TONNES U.S. HARD RED WINTER WHEAT, UNDER BEP, FOR JULY SHIPMENT. USDA, CCC, ANNOUNCED IT BOUGHT 60,000 TONNES U.S. NO. 2 YELLOW CORN FOR DONATION TO KAZAKHSTAN FOR JUNE SHIPMENT. USDA ACCEPTED TWO BIDS TO SELL 700 TONNES SUNOIL TO MEXICO, UNDER THE SUNFLOWERSEED OIL ASSISTANCE PROGRAM, FOR JULY/SEPTEMBER SHIPMENT.

DATE CHANGE YEAR AGO TRUCK BIDS: 05/26/93 05/25/93 05/27/92 WHEAT: KANSAS CITY 3.41-3.43 DN 3-6 3.76-3.78 MINNEAPOLIS TRUCK BID 3.78 1/4 UP 4 1/2 4.30 1/4 PORTLAND 3.47-3.50 NC 4.34-4.36 ST. LOUIS NEW CROP BID 2.88-2.91 NC 3.44-3.49.

CORN, U.S. NO. 2 YELLOW: KANSAS CITY 2.23-2.26 UP 1 2.66-2.67 MINNEAPOLIS 2.20 UP 1 1/4 2.54 SO. IOWA 2.22-2.28 DN 1-UP 1 2.59-2.62 OMAHA

2.13-2.15 NC-UP 1 N/A.

SOYBEANS, NO. 1 YELLOW: KANSAS CITY 6.05-6.08 UP 5-6 6.06-6.07 MINNEAPOLIS 6.01 3/4 UP 4 1/4 5.98 SO. IOWA 6.06-6.12 UP 4 6.04-6.07 C. ILL. PROCESSORS 6.12 3/4-6.20 3/4 UP 5 1/4 6.08-6.16.

*TRUCK BIDS FOR KANSAS CITY, US NO. 1 HARD RED WINTER WHEAT, ORDINARY PROTEIN. MINNEAPOLIS, US NO. 1 DARK NORTHERN SPRING WHEAT, 14% PROTEIN. PORTLAND, NO. 1 SOFT WHITE WHEAT, ST. LOUIS, NO. 2 SOFT RED WINTER WHEAT.

FUTURES CLOSE: KANSAS CITY (JULY) WHEAT 2.93 1/4 UP 2 1/4 3.57 1/2 MINNEAPOLIS (JULY) WHEAT 2.98 1/4 DN 1/2 3.70 1/4 CHICAGO (JULY) WHEAT 2.89 UP 1/4 3.51 1/2 (JULY) CORN 2.26 UP 1 1/4 2.59 (JULY) SOYBEANS 6.12 3/4 UP 5 1/4 6.05.

EXPORT: BARGE OR RAIL, PORT OF NEW ORLEANS OR NORTH TEXAS GULF. NO. 1 HARD RED WINTER WHEAT ORDINARY PROTEIN 3.53 1/4 DN 7 3/4 4.06-4.08 NO. 2 SOFT RED WINTER WHEAT 3.19-3.39 UP 1/4-NC 3.73-3.77 NO. 2 YELLOW CORN 2.46 1/2-2.47 UP 4 1/2-3 2.80-2.81 NO. 2 YELLOW SORGHUM RAIL 4.18 UP 2 BARGE 4.18 UP 1 4.84-5.38 NO. 2 YELLOW SOYBEANS 6.35-6.36 UP 6-5 1/2 6.29 BIRD.

THIS REPORT A SERVICE OF U.S. DEPARTMENT OF AGRICULTURE, LIVESTOCK AND GRAIN MARKET NEWS, ST. JOSEPH, MISSOURI.

Kutztown Produce Auction

Hay Auction

Saturday, May 20, 1993

TOTAL LOADS: 13.
MIXED HAY: \$5.00.
TIMOTHY: 65.00-70.00.
ALFALFA: 1.00 BALE.
WHEAT STRAW: .95 BALE, 69.00 TON.
OATS: 1.80 BU.

North Jersey Market

Hackettstown, N.J.

Tuesday, May 15, 1993

Hay-Straw & Grain Report

ALFALFA: 2 LOTS, 1.00 AND 1.35 BALE.
MIXED HAY: 8 LOTS, 1.50-2.30 BALE.
GRASS HAY: 10 LOTS, 1.00-2.40 BALE.
WHEAT STRAW: 1.40 BALE.
SHELLED CORN: 6.00 BAG.
GROUND CORN: 5.00 BAG.
OATS: 2 LOTS, 4.50 AND 5.00 BAG.
FENCE POTS: 1 LOT, 2.50.
TOTAL: 26 LOTS.

Dewart Hay

Dewart, Pa.

Monday, May 24, 1993

Report Supplied by Auction
16 LOADS OF HAY, 43.00-99.00.
CORN: 4 LOADS, 61.00-70.00.
OATS: 3 LOADS, 1.50-1.75 BU.

Leinbach's Hay

Shippensburg, PA

May 22 and 25

Report Supplied by Auction

39 LOADS.
ALFALFA: FAIR 50.00-85.00, GOOD 93.00-142.50.
MIXED HAY: 65.00-82.50.
TIMOTHY: 52.00-90.00.
CLOVER: 60.00-82.00.
BROME GRASS: 57.00-117.50.
ORCHARD GRASS: 50.00-60.00.
STRAW: 50.00-82.00.
MULCH: 17.00-42.00.

Northeast Chicken Parts

Wednesday, May 26, 1993

Trucklot buying interest for immediate needs was fair but below expectations. Supplies of boneless skinless breasts with tenders were in close balance with current needs and some buyer inquiry for next week needs went unfilled. The trade sentiment was fully steady. Heavier boneless skinless breasts without tenders were available, offered at competitive prices, and slow to clear. Line run breasts were irregularly distributed. Most buyers limited purchases to standing commitments. Trading was reported at unchanged to slightly higher prices. Yellow skin legs and leg quarters cleared to an active demand. Wings were available.

PRICES PAID PER POUND, ICE PACKED AND CO2 PACKED BROILER/FRYER PARTS, DELIVERED TO FIRST RECEIVERS IN POOL TRUCKLOT AND TRUCKLOT QUANTITIES.

ITEM CURRENT NEGOTIATED TRADING*

BREAST - B/S (W & W/O TENDERS) 205-210 BREAST - WITH RIBS 100-101 BREAST - LINE RUN 99-100 LEGS 32 LEG QUARTERS (BULK) 25-26 THIGHS 28-29 DRUMSTICKS 30-31 WINGS 37-38 BACKS AND NECKS (STRIPPED) 10-12 LIVERS (5 POUND TUBS) 25-30 GIZZARDS (HEARTS) 25 INCLUDES NEW YORK CITY METROPOLITAN AREA, NORTHERN NEW JERSEY, MASSACHUSETTS, CONNECTICUT, RHODE ISLAND, AND PENNSYLVANIA (NORTHEAST OF HARRISBURG). * TODAY'S NEGOTIATED SALES AS OF 11:30 A.M.

New York Egg Market

Wednesday, May 26, 1993

Prices on extra large and large eggs trended higher, mediums were unchanged. The trade sentiment continued fully steady. Movement into retail channels was fair. Supplies of larger sizes were adequate but held with confidence; mediums were also adequate.

PRICES TO RETAILERS, SALES TO VOLUME BUYERS, USDA GRADE A AND GRADE A, WHITE EGGS IN CARTONS, DELIVERED STORE DOOR, CENTS PER DOZEN RANGE EXTRA LARGE .73-.75, LARGE .70-.73, MEDIUM .58-.61.

Carlisle Livestock Market

Carlisle, Pa.

Tuesday, May 25, 1993

SLAUGHTER STEERS: CHOICE, NONE OFFERED; SELECT 875-1300 LBS. 70.75-75.50.

SLAUGHTER HOLSTEINS: STRONG DEMAND. CHOICE 70.25-74.50; SELECT 64.00-68.00; STANDARD 59.25-63.00.

SLAUGHTER COWS: ACTIVE! BREAKING UTILITY AND COMMERCIAL 51.00-53.00; HIGH YIELD TO 58.00; CUTTER AND BONING UTILITY 49.00-54.25; CANNER AND BONING UTILITY 44.00-48.00; BIG MIDDLE 46.00-50.25; SHELLY 43.00 AND DOWN.

SLAUGHTER FAT BULLS: YG#1 62.50; YG#2 53.75-57.00.

FEEDER CATTLE: GOOD DEMAND! FEEDER STEERS 300-400 LBS. MEDIUM #1 101.00-130.00; 500-750 LBS. MEDIUM AND LARGE #1 82.50-92.50; 350-750 LB. HOLSTEINS 72.50-89.00.

FEEDER HEIFERS: 450-750 LBS. MEDIUM #1 78.00-84.00; 700-950 LBS. MEDIUM AND LARGE #2 60.00-68.00.

FEEDER BULLS: 550-750 LBS. MEDIUM AND LARGE #1 77.00-88.00; HOLSTEINS AND DAIRY TYPE 57.00-75.00.

VEAL CALVES: STRONG DEMAND. CHOICE 100.00-110.00; GOOD 90.00-99.00; STANDARD 55.00-85.00; LIGHT/WEAK 50.00 AND DOWN.

HOLSTEIN FARM BULLS: OVER 95 LBS. TO 182.50; UNDER 95 LBS. TO 172.50.

HOLSTEIN FARM HEIFERS: ALL WEIGHTS 150.00-190.00.
HOGS: BARROWS AND GILTS

US#1-3 220-260 LBS. NONE OFFERED; OVER 300 LBS. 39.00-45.75; #2&4 41.00-46.00.

SOWS: 350-550 LBS. 40.00-44.00; #2&4 34.25-39.00.

BOARS: OVER 300 LBS. 28.00-32.00. FEEDER PIGS: BY THE HEAD, ACTIVE! 15-25 LBS. 17.00-35.00; 35-45 LBS. 27.00-36.00.

SHEEP: EWES 15.00-44.00.

LAMBS: CHOICE 45-60 LBS. 92.50-102.50; CHOICE 70-100 LBS. 80.00-87.50; GOOD 60-110 LBS. 70.00-87.00; MEDIUM, ALL WEIGHTS, 57.50-70.00.

GOATS: LARGE 55.00-61.00; SM/MED/KIDS 22.00-51.00.

SALE EVERY TUES. RECEIVING RABBITS, EGGS AND POULTRY 5 P.M., SALE TIME 6 P.M., LIVESTOCK SALE TIME 7 P.M.

STATE GRADED FEEDER PIG SALE FRIDAY, MAY 28, 1:30 P.M.

Dewart Livestock Auction

Dewart, Pa.

Monday, May 24, 1993

Report Supplied by PDA

CATTLE 102.. PDA ..sl. cows 2.00 to 3.00 lower. STEERS: few Choice 1150/1270 lbs. 76.25-79.00, few Select 71.00-73.75. HOLSTEINS: Choice 71.25-72.50. HEIFERS: few Select and Low Choice 66.00-74.50. COWS: few Commercial 45.00-50.00, Cutter and Boning Utility 49.00-53.00, couple 54.50, Canner and Low Cutter 42.00-48.00. Shells down to 35.00. BULLS: few Field Grade No. 1 1240/2090 lbs. 59.50-67.00. FEEDER CATTLE: few Large Frame No. 2 540/825 lbs. heifers 61.00-62.00.

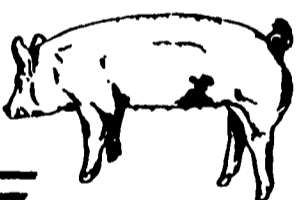
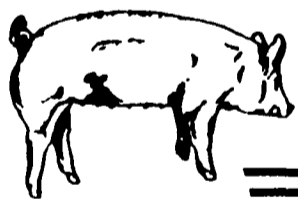
CALVES 131..VEALERS: few Standard and Good 75/90 lbs. 60.00-65.00. FARM CALVES: No. 1 90/130 lbs. Holstein bulls 150.00-180.00, couple 185.00, No. 2 80/120 lbs. 95.00-140.00; few No. 1 80/140 lbs. Holstein heifers 172.50-197.50. Few Beef Cross 70/100 lbs. bulls and heifers 80.00-150.00.

HOGS 120..Barrows and gilts .50 to 1.00 lower. BARROWS & GILTS: one US No. 1-2 265 lbs. 48.25, two head 50.00; few lots 1-3 225/255 lbs. 46.25-46.75, one 2-3 275 lbs. 42.00, couple 1-3 195 & 200 lbs. 42.00 & 42.75. SOWS: US 1-3 300/650 lbs. 35.75-41.75. BOARS: 31.00-34.75.

FEEDER PIGS 43...few US 1-3 25/40 lbs. 28.00-38.00... all per head.

SHEEP 21...Choice 30/85 lbs. spring sl. lambs 62.00-73.00, couple 83.00.

GOATS 0...No market test.



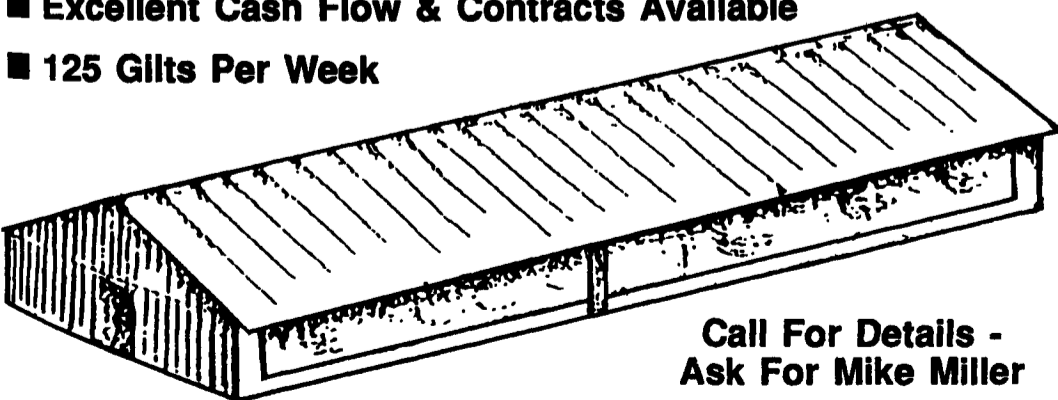
EXCELLENT FINISHING CONTRACT OPPORTUNITIES AVAILABLE

New 9 Room, 2250 Head Finishing Facility

For **PRO GENETICS** Gilts

■ Excellent Cash Flow & Contracts Available

■ 125 Gilts Per Week



Call For Details - Ask For Mike Miller

1-800-468-5524

(717) 367-1525

419 West High St., Elizabethtown, PA 17022



B&M FISHER'S PAINTING & FISHER'S PAINT OUTLET STORE

QUALITY PAINTS @ REASONABLE PRICES

- ALL TYPES OF INTERIOR & EXTERIOR PAINTING
- SANDBLASTING ■ ROOF COATING
- RESTORATION & WATERPROOFING ON STONE & BRICK BUILDINGS

HOUSES - BARNs - FENCES - FACTORIES - ETC.

Specialists in Sand Blasting/Spray Painting Farm Buildings, Feed Mills, Roofs, Tanks, Etc. With Aerial Equipment

4056A Newport Rd., Kinzers, PA 17535 717-768-3239
On Rt. 772 Across From Pequea Valley School

Brush, Roll Or Spray - We'll Do It Either Way
For Jobs Large Or Small - Our Men Will Do It All

BOYDELL FARMS

302 Iona Rd., Lebanon, PA 17042
Phone. 717-272-8943

DISTRIBUTORS FOR:
SILO QUEEN



NEW 2525 2329 BIRD FOOD

CHEMICALS

WHOLESALE & RETAIL

SOYBEANS



3090 E Resnick - Pella NC 354-284-Shore

ALFALFA
84 VWAP VERNAL WETFOOT
DISTRIBUTOR FOR
GREAT PLAIN VARIETIES
CIMARRON VR KEY
BELMONT BLENDS

BALER TWINE \$19.95 Bale

FERTILIZER