

HIRED-HAND

The name you trust -
The products you can depend on!

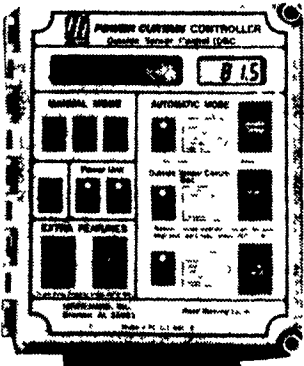


SUPER SAVER HEATER

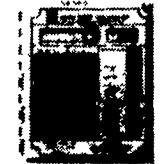
FUNNEL FLOW FAN



POWER CURTAIN



SYSTEM CONTROLLER
System 2000 is a new, eight-stage curtain and ventilation controller from Hired Hand. All system operations are menu-driven. It can adapt to any ventilation mode as it manages heaters, fans, foggers and curtains or doors. It can go from negative ventilation to natural to tunnel automatically.



AUTO TEMP 12-STAGE CONTROLLER SYSTEM



ALERT ALARM



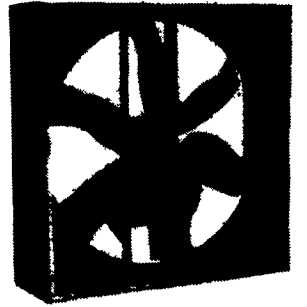
CURT-O-MATIC POWER FAILURE DROP

AUTHORIZED MASTER DISTRIBUTOR



High Efficiency Direct Drive Fan

AVAILABLE IN 36" OR 48"



Acme's precise engineering has matched a cambered twist propeller with continuous duty motors to form high air flow and low energy consumption fans. Combined with corrosion resistant galvanized orifice and frames, these fans offer the user maintenance free long lasting equipment suited for use in agricultural environments.

- Galvanized Construction — corrosion resistant, long lasting.
- Cambered Twist Propeller — High airflow, low energy cost, high CFM/watt.
- Totally Enclosed Motors — Gasketed and shielded against dust and moisture.
- Premounted in Particle Board Box — Easy handling and fast installation with wire screens both sides
- Vertical Support Frame — Maintains proper alignment.
- Motor wire leads for quick hook-up.
- Direct Drive — No drive losses, no belts to slip.
- Quiet Operation.
- Optional Discharge Diffuser Cone — Increases performance of fan without additional HP.



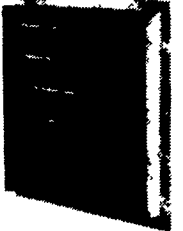
ENERGY EFFICIENT ENCLOSED MOTORS



- Heavy-duty totally enclosed motors with sealed ball bearings are designed for continuous work load.
- Available in two-speed.
- Built-in thermal overload for low line-voltage protection on all single phase motors.

ALUMINUM SHUTTERS:

- All Aluminum Construction
- Counter Balanced Blades
- Nylon Bearing
- Stainless Steel Hinge Pins
- Low Air Resistance *
- Reduces Sticking in Dusty and Moist Conditions *



SEE US FOR YOUR REMODELING NEEDS

CLEARANCE SALE!

- Galvanized Nursery Feeders
- Horizontal Finisher Fencing
- Farrowing Crates
- Ventilation Curtain Material
- Tenderfoot Flooring
- Stainless Steel Trough
- Grower Fencing
- Solenoid Valves
- Aluminum Shutters
- LB White Heaters

Save 30% On Your Electric Bill with our 175 Watt Heat Bulb



Phillips

Long Lasting 5,000 Hours
These 175 watt heat lamp bulbs put out as much heat as a 250 watt bulb but use 30% less electricity at \$.10 per K.W.H that's \$37.50 over the life of the lamp. Even better, if you run 40 lamps that's a savings of \$1,500.00

Bulbs are Heavy Duty Industrial type with high brass base and are resistant to urine and water splash damage, so you'll save even more on those costly breakage problems.
15 bulbs/case



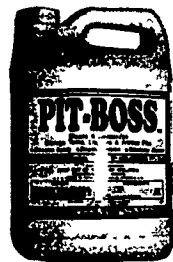
METER-MAN UNIVERSAL COOLING SYSTEM

Keeps Livestock And Poultry Cool!
Cooling Increases Profits!



QUANTEM SERIES 50

Temperature Modulating Fan Speed Control



PIT-BOSS™

Pit Additive To Reduce Pit Odor And Pit Solids

NEW



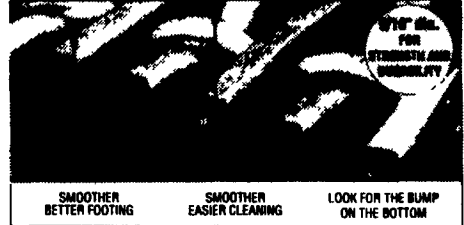
BOSS HOG FLOORING



SUNNE THERMOSTAT

HEAVIEST WIRE FLOORING MADE

Patented "Double Smooth" design — only from Boss Hog

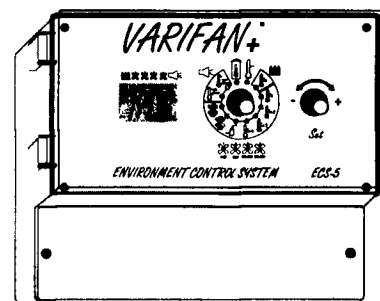


SMOOTHER BETTER FOOTING SMOOTHER EASIER CLEANING LOOK FOR THE BUMP ON THE BOTTOM

Boss Hog's patented "Double Smooth" design plus the strength and durability of its exclusive 5/16" diameter wire make this your best flooring buy! Insist on Boss Hog, the wire with the bump on the bottom. From the nation's largest manufacturer of animal flooring.

Multifan

VARIFAN+ ECS-5 TEMPERATURE CONTROL SYSTEM



- PROVIDES 5 POWER LEVEL OUTPUTS**
- ✳ PROPORTIONAL VENTILATION
 - ✳ PROPORTIONAL VENTILATION
 - ✳ ON/OFF VENTILATION
 - ✳ ON/OFF VENTILATION
 - ✳ ON/OFF HEATING UNIT
- 2 YEARS WARRANTY
 - EASY TO INSTALL
 - CAN BE CONNECTED TO A PC FOR CENTRAL OPERATION

MODEL	STAGES
ECS - 1	1 variable fan.
ECS - 2	1 variable fan, 1 on/off (fan or heater).
ECS - 3	2 variable fan, 1 on/off (fan or heater).
ECS - 4	2 variable fan, 1 on/off (fan or heater). 1 timed on/off stage.
ECS - 5	2 variable fan, 2 on/off, 1 heater.



Full Line Of Parts In Stock For Your Poultry And Hog Needs



FARMER BOY AG. INC.

410 E LINCOLN AVE MYERSTOWN, PA 17067

PH. 717-866-7565

Hours: M-F 7:00-5:00; Sat. 7:30-11:30

Check Our Warehouse Prices



WE SHIP UPS



5-29

A show for Northeast livestock, dairy and poultry producers

PENNSTATE



College of Agricultural Sciences Cooperative Extension

SEE JAY OR PAUL FOR YOUR



PARTS AND EQUIPMENT NEEDS



JAY ZIMMERMAN — Sales

PAUL HIGH — Sales