

**FARMS
CUMBERLAND COUNTY**

87 Acre Dairy, rolling limestone, wooded pasture and 70 acres cropland, springs and stream. Road frontage, 4 BR stone brick dwelling. Call for details.
95 Acres m/l some wooded, gently rolling, shale soil, bank barn, implement building, log & frame farmhouse. Call for details.

Land 47 Acres Limestone Soil, Zoned agricultural, several acres wooded, east of Carlisle, Frontage on two roads. Call Charles.

Charles Wenger, GRI, 263-0945
Wilbert Diehl 776-7707

**GEORGE L. EBENER &
ASSOCIATES REALTORS**

139 W. High St., Carlisle, Pa.
Ph. (717) 243-6195

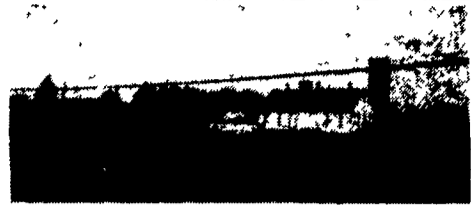
**LANCASTER CO.
FARMETTE** Brick farm-house close to Manheim, 13 acres, excellent cond. Priced...\$219,900

DAIRY FARM. Ideal dairy set up on Lanc. Co. Limestone farm. 108 acres. Call today! Lovely setting.

**DEVELOPMENT
GROUND - Farmersville.** Zoned R-2. 13.8 acres on top of hill. \$269,900.

**KINGSWAY
REALTY
(717) 569-8701**

**ACCORD
REALTY INC.
737-6333**



CUMBERLAND COUNTY

Dairy farm, limestone soil, pipeline, bulk tank, silos, lagoon, two houses.



For Details Ask
For Ed Meyer
717-737-6333 Office
717-243-1030 Home

Clip and Save This AD!



**Mt. Cabin
For Rent**

McClure, Pa.

Mifflin County On 315 Acres, Utilities.
One Hr. To Penn State. Hiking, Swimming,
Biking, Hunting, Fishing, Skiing.
OPEN ALL YEAR-WEEKLY & WEEKEND RATES 717-658-9555

NIAGARA COUNTY, N.Y. - Beef or horse farm, 81 acres, attractive 2+ bedroom home, two story barn 20x30, garage barn 34x30, barns 29x32, 35x70, metal pole barn 40x36, new 60x40 + 50x100 pole barns, 33 acres woods & owner financing \$225,000.

SENECA LAKE - 72 acres, barn, charming, original, 2 fireplaces, 4 bedroom home plus rustic tenant house, stone fireplace, \$151,000. May be divided. N.Y. Dairy.

NIAGARA COUNTY Majestic Cobblestone - Spacious elaborate 5+ bdrm mansion with 2.5 baths, white brick fireplace, family rm. large enough for a pool table, center entrance foyer with spiral cherry staircase built by a sea captain, high ceilings with 3+ acres. \$185,000. Owner relocating.

LODI - Rustic 3 plus bedroom raised ranch, stone fireplace, 1 1/2 acres, view of Seneca Lake \$35,000.

JIM NOONAN, Broker

**MCKNIGHT-HOGAN
& NOONAN REALTY
(716) 433-6788**



1525 Science St., State College, PA 16801

814-231-0101

"FULL TIME, FULL SERVICE,
EXPERIENCED."

Contact: DON C. MYERS
Residence: (814) 422-8111
KENNETH L. HALL
Residence: (814) 387-6273

FARM
&
RURAL

PROPERTY
DIVISION



**CENTRAL PENNSYLVANIA
FARMS, FARMETTES AND LAND
MONTOUR COUNTY**

**#6161FA DAIRY FARM LIMESTONEVILLE AREA. \$285,500 OPTION 1
(OPTION 2 \$349,500) \$425,000 OPTION 3**

- 50 acres w/48 acres tillable, 2 acres site (Option 1)
- 97 +/- acres w/90 acres tillable, 5 acres woodland, 2 acres site. (Option 2)
- 124 acres w/117 acres tillable, 5 acres woodland, 2 acres site (Option 3)
- 2 story stone & frame home w/main living area and 2 apartments, 67 tie stall dairy barn, 35'x126' heifer barn, 20'x70' & 20'x72' silos, lagoon manure system, milk house outbuildings.
- Located in an excellent agricultural area, very well maintained, limestone soil.

CENTRE COUNTY

#7303 FA 125 ACRE DAIRY FARM, MILLHEIM AREA. \$339,500

- Approximately 125 acres, with 116 tillable, 4.5 acres woodland, 5 acres site and miscellaneous.
- Buildings include a sound two story, 4 bedroom plank constructed home, a two story bank barn with a 28 stall flat parlor with a pipeline, a 72'x80' free stall barn, a 20'x80' concrete stave silo, a 20'x92' poured concrete silo, a frame implement shed, and a 1000 bushel corn crib.
- This farm has been well maintained and is presently in operation. The tillable land ranges from gently rolling to moderately steep. An additional adjacent 72 acre tract with 63 acres tillable is available.

#6169FB 8.5 ACRE FARMETTE, POTTERS MILLS AREA \$209,500.

- 8.5 acres, with 1 acre site, balance tillable.
- 1 story 28'x52' ranch home in immaculate condition, and a 30'x48' heated and insulated garage.
- This listing is well suited as a farmette for horses. It has nice views, quality landscaping, and subdivision potential. The house and garage are very well built and cared for. The garage has potential for use as an office or in-home business.

#6154FA 55+- ACRE HORSE FARM, BELLEFONTE AREA \$325,000.

- Approx. 55 acres, with 18 tillable, 20 pasture, 13 woods, 4 site and misc.
- Sound buildings include a 2 story double house, two story bank barn, a 60'x120' clear span riding arena, a separate 28'x42' horse barn, a 20'x120' implement shed, and other outbuildings.
- There are a total of 24 box stalls for horses. The farm has an outdoor riding area, and a paved barnyard. It is in a desirable geographical location in Centre Co.

HUNTINGDON COUNTY

#7309FA 158 ACRE DAIRY FARM, TYRONE AREA. \$339,500

- Approximately 158 acres, with 119 acres tillable, 18 acres pasture, 18 acres woodland and 3 acres site area.
- Buildings include a two story brick home with stucco exterior, a two story bank barn with a 38'x110' one story attachment with 50 tie stalls, a 16'x70' pole building, 20'x60', 18'x50' and 10'x35' silos with unloaders, and a 12'x53' trailer.
- This farm has productive, Hagerstown soil, and a very private, but easily accessible location. The pipeline, bulk tank and associated dairy equipment have been sold.

#6225FA - GENERAL OR BEEF FARM - PETERSBURG AREA \$295,000

- Approx. 170 Acres w/125 tillable, 27 pasture, 13 woodland, 5 site & road frontage
- Sound 2 story brick home w/new 1-story attachment, (2) 1 story pole barns, 1 Quonset Shed
- The buildings on this farm have a very nice setting away from the road. There is significant public road frontage and a small year-around stream. The Majority of the land is gently to moderately rolling. 16 miles from State College.

#134 FA - RIVER BOTTOM LAND - ALEXANDRIA AREA - \$99,500

- 55+ Acres (45.6 tillable, highly productive)
- Ideal for truck cropping and irrigation
- Situated in an excellent location for direct (roadside) marketing

MIFFLIN COUNTY

#7278FA 123 ACRE DAIRY FARM, McVEYTOWN AREA, \$424,000

- Approx. 123 acres, 81 tillable, 30 woodland, 12 acres site and pasture
- Remodeled stone house, 2 story, bank barn, implement shed, corn cribs, 2 car garage
- This farm has gently to moderately rolling land and active Conrail Railroad borders the North side of the farm

LYCOMING COUNTY:

#6028FA 187 ACRE GENERAL OR RECREATIONAL FARM - MUNCY AREA

\$224,500 WITH TIMBER \$187,500 WITHOUT TIMBER

- Approximately 197 acres, with 80 acres tillable, 113 acres pasture and woodland, 2 acres site, 2 acres roads.
- This farm has a small 2 story home that would be well suited for use as a cabin, and two concrete block silos.
- Approximately 50 to 60 acres of the woodland on this farm has not been timbered since 1920. There are four small streams, two with natural waterfalls, and several springs. It has a substantial gravel township road frontage. This property is ideal for hunting and recreational use.

**DETAILED BROCHURES ARE AVAILABLE FOR EACH OF THE LISTINGS
OVER 75 VACANT LAND PARCELS - 1 TO 400 ACRES AVAILABLE
IDEAL FOR CABINS AND HUNTING - FREE LISTS.**

WIMPLE ASSOCIATES

HOUSING FOR 3 FAMILIES: on this 233 acre Wyoming Co. farm with 140 acres tillable. Gambrel roof block barn has 70 tie stalls with 2" pipeline, 3 unloading silos with 1 Harvestore. New Morton 54x90 steel barn with 30x54 heated & insulated shop. Impressive 11 room home in very good condition plus tenant house and spacious 14x70 mobile home. \$250,000.

GREAT SPOT FOR FISHING PRESERVE or hatchery on this 187 acre farm near Cooperstown with 2 streams and 11 ponds, some 4-5 acres, 100 acres tillable. 4± acre mature orchard. 51 stall barn with 2" pipeline, 16x50 silo, hay drier, mow elevator. Quaint 4 bedroom home. Outstanding views, great hunting, \$160,000.

**MORT WIMPLE ASSOCIATES
SLOANSVILLE, N.Y.**

518-875-6355

FAX: 875-6749

FREE DAIRY CATALOGUES

LARGE NEW YORK FARMS

#2012 - Potato Farm - large storage, grading and packaging barns. Shop & machinery bldgs., large ranch home. This is a valley farm with beautiful setting. Land is flat, well drained. 440 acres in three fields. Lots of irrigation water. Owner wishes to retire. Asking \$950,000. Will consider financing with qualified buyer.

#941 - 500 acre valley crop farm. Flat land well drained. Best land in NYS. Irrigation water. Grain and potato storage barns, 12 room home. Great location. Owner is retiring. Asking \$850,000.

#1263 - 500 acres - 490 tillable all joining. Big fields, flat land, no stone, well drained, the best land. Large road frontage, 110 tie stall barn, pipeline, 2000 gal tank, two houses. \$650,000.

Selling farms for 25 years in 24 counties - Central New York. Free farm list available. Call or write.

Dick Posson, Broker

POSSON REALTY

R.D. #3, Norwich, N.Y. 13815

(607) 334-9727



MUST SEE

RESIDENCE - SHOP/OFFICE

Restored three story pre-civil war brick with 1800's general store on first level, all new wiring, plumbing, gas furnace, central vac etc. Detached summer kitchen & carriage house, lovely small village 7 mi. North of Gettysburg, PA Sale by owner - financing available

Adams Co. 717-677-4835 Walter Smith



YORK COUNTY - 93 acre dairy farm. Bulk milk tank, s.s. pipeline, 5 BR home with 2-car garage, excellent condition. Land in high state of fertility. A must see.

PERRY COUNTY - 212 acre general farm ideal for steer, chicken or hog farm.

CUMBERLAND CO. - 156 Acres dairy farm, double 6 parlor. 108 free stall barns, 4 stave silos w/unloaders. 5 BR farmhouse. Reasonable taxes and reasonably priced.

These farms are priced between \$250,000 & \$325,000. You must see them to appreciate.

RED ROSE REALTY

Call Dale Land's, Farm Specialist

717- 626-5875

Merlin H.

**Fields
Real Estate**

Regional Office
101 North Wayne Street
Lewistown, Pa. 17044

(717) 248-5451

(717) 248-3904 (FAX)

For More Info -

Call R. Baer (717) 248-2618

Call M. Fields (717) 248-5451

BRIAR HILL CAMP - located only 3 miles West of McVeytown off of Rte. 103. Nice "A" frame, sleeps 15 - 18. Ideal hunting camp and area. ASKING PRICE: \$125,000.00 80+ Acres.

SERVING THE FOLLOWING COUNTIES WITH BROKERAGE AND APPRAISALS
Mifflin, Centre, Huntingdon, Juniata, Perry, Snyder, Northumberland and Union.

MEMBER OF LOCAL MULTI-LISTS