

**32 MISCELLANEOUS**

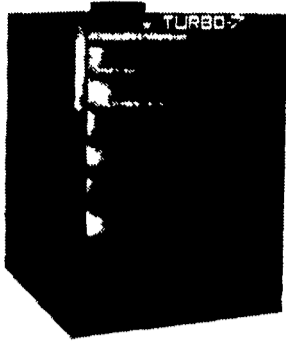
**PAINTED STEEL ROOFING & SIDING**

- Galvanized/Galvalume
- 29/26 Gauge
- 3 Major Brands Available
- Large Stock Trim & Sheet
- 5V Crimp Metal

**AS LOW AS \$32<sup>00</sup> per/sq.**

**Conestoga Building Supply**  
New Holland, PA 17557  
717-354-2613 or 1-800-544-9464

**Heat With Waste Oil Turbo Z Series Free Air Applications**



90,000 - 260,000 BTU Units  
10 years combustion warranty.  
A safe way to dispose your waste oil.  
Over 13 years experience.  
Electronic air, Fuel control modules give dependable performance.  
Prices starting at \$2,195.00

**Power Systems Electric, Inc.**  
(717) 933-5617

**33 RECREATIONAL VEHICLES**

19 1/2 Coachman, Omni Awning, Sway Bars, Disks, Utensils, Many Extras, Excellent Condition. Asking \$3000. 10AM to 4PM Mon. Thru Thurs. 717-759-9870.

1976 Ford Midas Camper, 19'. Good Condition, Sleeps 6. \$5000 OBO. 717-334-8203 or 717-334-6418.

**34 AUTOS**

Chevy 92 Astro Van Extended, Black, Loaded, 25,000 Miles, \$15,400  
91 Ford Aerostar Loaded, 58,000 Miles \$10,400  
**Twin Pine Auto Sales**  
717-733-6548

**34 AUTOS**

1978 Jeep Wagoneer, 4WD, AM/FM, automatic, good condition, \$2000 neg., 717/774-8353 after 5pm.

90 Olds Cutlase 4 Dr, Blue, Quad 4 Along with Wheels Loaded, 10,000 Miles \$7,995

89 Honda Accord, 4 Dr, LXI \$9,800

90 Pontiac Grand Prix, 3.1 V6, Automatic, Black \$8,500

91 Honda Civic DX, 4 Door, Automatic, A/C, 28,000 Miles \$8,400

**Burkholders Auto**  
Danville, PA  
717-437-3848

1986 Diamond T tractor, 220 Cummins, RT0918, 2 speed, new 923DB tractor \$8,000. 1981 IH L160 parts truck, \$100. 40' Westcoast fifth wheel trailer, tandem, \$100. (301)373-2190.

1967 Chevy 1/2 ton, 39,000 original miles, needs bed and body work, good restoration project. 215-582-0879 Evenings.

1970 C-60 Chevy truck, twin screw, 427 gas engine. Lebanon, (717)273-2910.

1970 Diamond-Rio cattle truck, 26,000 GVW, 20' bed, excellent rubber, inspected, \$2,500 OBO. (717)423-6758.

1972 Ford F-600 Truck w/10' Doyle fertilizer spreader body w/2 spinners, works good, \$2000. 908/359-5934.

1988 Liberty gooseneck flatbed trailer, 8'x24' with 8'x6' deck over neck, 4 ton winch and loading ramps, \$2200 or best offer. Union County 717/966-2803.

1979 Marmon Dump Truck, tri-axle, mtr.rebuilt, rear fact.rebuilt, new bed paint, just inspected, 72,500 GVW, \$19,500. 717/426-4421.

'87 Chevy C20 HD, 1/2 ton pickup, 350 FI, auto, PS, PB, air, AM-FM, dual tanks, 8,600 GVW, blue & white, \$7,400. 717-733-2873

'87 Chevy C30 Silverado, 3+3, crew cab, 454 auto, PS, PB, PW, PDL, cruise, tilt, air, AM-FM, towing package, high rise fiberglass cap, 37,000 miles, like new. 717-733-2873

'87 Chevy C20, HD w/wheel Reading utility body, 350 FI, auto, PB, PS, AM-FM, 8,600 GVW, 41,000 original miles, red, excellent condition, \$9,300. 717-733-2873

**LIVE GAME FISH** Fingerlings and Adults, Large and Small Mouth Bass, Spotted and Rock Bass, Bream Crappies, Trout, Channel Cats, Bullheads, Walleyes, Perch, Minnows, Northerns, Pickerel, Muskies, Red Gills, Mulletts, Carp, Eels, Turtles, Frogs, Israel Carp. Also Aquatic Plants and Water Lilies. COLORFUL CATALOG \$2.00.



Truck, Air and Parcel Post Delivery.  
**ZETTS FISH HATCHERIES**  
DRIFTING, PENNA. 16834  
Phone: 814-345-5357

**33 RECREATIONAL VEHICLES**



**Hunter Dream**  
17 Ft. Camper, Sleeps 6,  
Easy Tow  
**\$800**  
(301) 898-7426

**BULK SPRING WATER**

Available 24 hrs/day  
Pick-up only  
Hudson Farms

Call: **Hudson Farms, Inc.**  
PO Box 487, Avondale, PA 19311  
(215) 869-2408

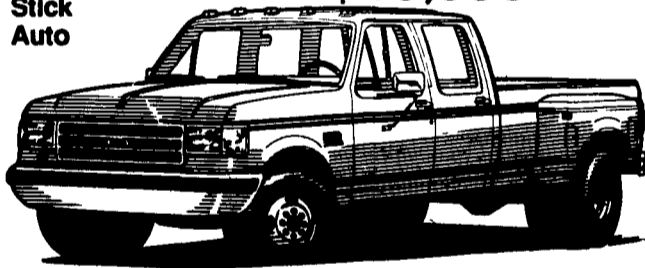
**35 TRUCKS & TRAILERS**

Mark VII - Pickups - Broncos - Bronco II - Stake Body - Crew Cab

**'93 FORD CREW CABS**

As Low As **\$20,995**

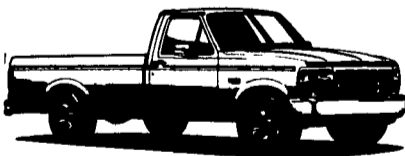
- In Stock**  
(4) '93 Diesel, Stick  
(1) '93 Diesel, Auto  
(4) '93 Centurions Diesel, Stick



**'93 FORD F-150**

#1442, 6 Cyl., 5 Spd, PS, PB, AM-FM St., Rear Step Bumper  
DELIVERED PRICE

**\$10,995\***



**'93 FORD F-250 SUPER CAB 4x4**

Diesel, Stick, PW, PL, More!  
2 In Stock!



From **\$24,390**

**'93 CONVERSION VANS**

6 To Choose From!

V8, AC, Automatic, PS, PB, TV, Loaded, HI-Tops & Low Tops



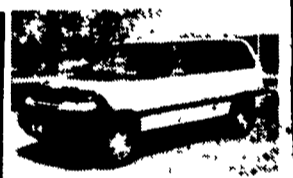
\* Prices include applicable rebates plus \$500 cash or trade. Tax, tags and doc fees additional. Payments at 10.9% APR for 60 Months.



'91 FORD F-350 XLT Dually, Crew Cab, 7.3 Diesel, AT, Loaded, 5th Wheel Hookup, 39,000 Mi., P1627  
..... Call For Details



'89 FORD RANGER STX Super Cab, 4x4, 6 Cyl., AT, Loaded #1663A.....\$13,997



'90 MAZDA 4x4 MINI VAN V6, AT, Loaded, Local Trade #P1625A.....On Sale \$15,500



'90 FORD RANGER XLT 4x4, 6 Cyl., AT, AC, 43,000 Mi., Super Clean, #1440A\$13,574



'87 FORD F-350 CREWCAB DUALY 460 V8, AT, Loaded, 59,000 Mi., One Owner, #1337A.....\$15,899



'90 FORD F-150 SUPERCAB 4x4 5.8L, AT, Loaded, Capt. Chairs, 32,000 Mi. #P1565  
.....On Sale For \$14,000



'88 FORD F-150 SUPERCAB 5.8L, AT, Loaded, 89,000 Mi., Extremely Clean, P1582  
..... On Sale \$9,999



'92 FORD CLUB WAGON XL, 15 Pass., 5.8L, AT, Loaded, Rear Air, One Owner #1583A.....\$17,999



'91 FORD BRONCO XLT AT, Loaded, 21,000 Mi., Super Clean P1609On Sale \$18,999

- '92 Aerostar Ext, XL, 22,000 Mi, P1588..... \$16,992
- '88 Toyota SR5 Extended Cab, 4x4, 5-Spd., AC, Sun Roof & More #1524A..... \$10,999
- '89 Dodge Dakota 4x4, V6, 5 Spd., AC, 50,000 Miles #3773A..... On Sale \$8,995
- '88 Bronco II XLT, V6, 4 Spd., AC, Local Trade, Super Clean #P1530B..... \$11,679
- '91 Chevy S10 Blazer, 4 Dr., V6, Loaded, Tahoe Pkg., Local Trade #1680A..... \$15,999
- '91 Aerostar, Eddie Bauer, 4WD, V6, AT, Loaded, P1598..... \$17,622
- '80 F-150, XLT, 5.0L, 5 Sp., 28,000 MI., 1477A..... \$13,332
- '90 Ranger XLT, 4 Cyl., 5 Spd., 48,000 MI., 1448A..... \$8,997
- '90 Ranger XLT, 4 Sp., One Owner, 60,000 MI., 1135A..... \$7,997
- '89 Dodge Dakota 4x4, V6, 5 Sp., AC, Light Bar, 3773A..... \$9,379
- '89 Ranger, 4 Cyl., 5 Sp., Local, 1096A..... \$5,998
- '89 F-150 Supercab, 4x4, XLT, 351 V8, Loaded, 1488A..... \$14,268

Unless This Emblem Is On Your Car Or Truck You Probably Paid Too Much

9-9 Daily  
9-5 Sat.  
717-272-7671



**SHEEHY LEBANON**  
**SHEEHY FORD LINCOLN MERCURY INC.**  
20th & Cumberland St., Lebanon

Parts Dept. Open  
Daily 8-5  
Sat. 8-12  
717-273-8168

Tempo - Cougar - Continental - Town Car - 4x4 - Box Van - Rangers

Custom Vans  
XLT  
Grand Marquis  
Marquis

LYN  
Popaz  
Diesel Pickups  
Mustang  
F Bird