

New Gate Hinge Bracket For Steel T-Posts

ROCHESTER, Minn. — Wouldn't it be nice to hang a gate from a steel T-post?

Now you can with American FarmWorks' new Wedge-Loc gate hinge. The all-aluminum hinge bolts securely to any size steel T-post and swings up to a 10 foot gate. For wider openings, up to 20 feet, you can swing gates from both sides.

The Wedge-Loc gate hinge eli-

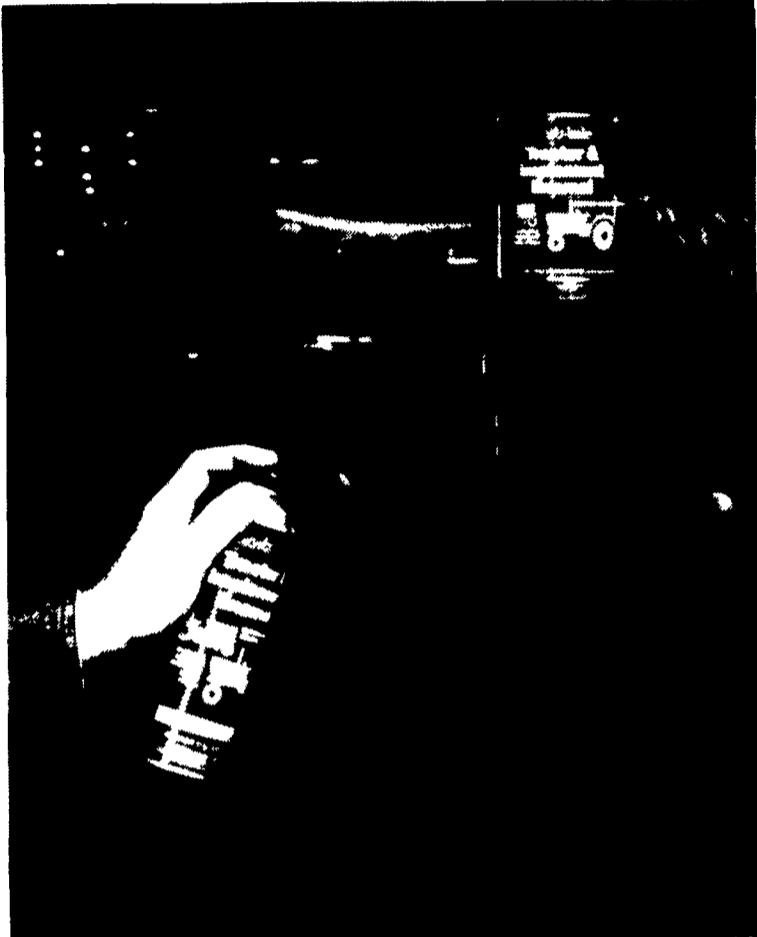
minates the need for wooden gate posts, digging post holes, or drilling holes for hinge pins. Simply drive a steel T-post wherever you need a gate and bolt on a Wedge-Loc gate hinge. The pin lock design prevents livestock or people from lifting the gate off its hinges. The Wedge-Loc gate hinge lets you easily move gates from one location to another.

American FarmWorks' Gate Hinge is part of the Wedge-Loc T-

post bracing system. Other Wedge-Loc hardware lets you build end and corner braces using only T-posts. There are also brackets that hold plywood and planks to T-posts for woodsheds, kennels, and other enclosures.

For more information on the Wedge-Loc Gate Hinge and other Wedge-Loc hardware, contact American FarmWorks, (800) 437-1839.

Introduces Tractor Enamel



MEDINA, Ohio — A new tractor and implement enamel from Plasti-Kote sprays on a durable, weather-resistant gloss finish.

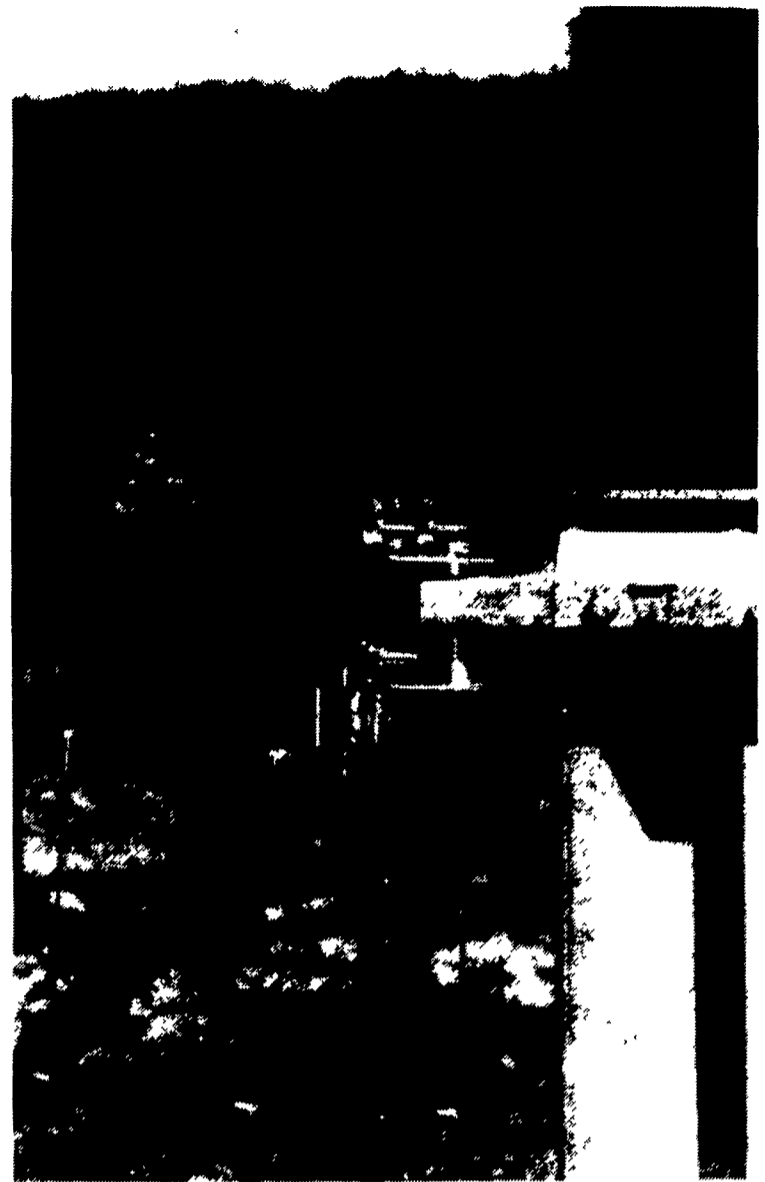
It will not crack or peel and offers exceptional adhesion. The brilliant hard finish withstands abrasion.

Tractor & Implement Enamel is specially formulated to resist rust and corrosion on exterior and interior metal surfaces. It won't fade. The gloss won't dull when exposed to wind, rain, and sun.

Tractor & Implement Enamel is ideal for tractors and farm implements. It's lead-free and nontoxic when dry. It may also be used on wood.

Tractor & Implement Enamel comes in quarts and in 12-ounce aerosols. It's available in 13 factory-matched colors: Deere Yellow, Harvester Red, Ford Gray, Deere Green, Oliver Green, Ford Blue, Case International Red, New Allis Chalmers Orange, New Caterpillar Yellow, Case International Silver, Case Flambeau Red, Caterpillar Yellow, and Case International Black.

Tractor & Implement Enamel is specially formulated to resist rust and corrosion on exterior and interior metal surfaces. It won't fade. The gloss won't dull when exposed to wind, rain, and sun. Tractor & Implement Enamel is ideal for tractors and farm implements. It's lead-free and nontoxic when dry. It may also be used on wood.



American FarmWorks' new Wedge-Loc gate hinge bolts securely to any size steel T-post and swings up to a 10 foot gate. The Wedge-Loc gate hinge eliminates the need for wooden gate posts, digging post holes, or drilling holes for hinge pins.

LOVE THEM WITH MILK

BOWMAN'S STOVE & PATIO INC.
Hearth Products • Gas Grills • Casual Furniture
906 E. Main St. (Rt. 322) Ephrata, PA
1 Block East of Rt. 222
(717) 733-4973
1-800-642-0310
Mon., Tues., Wed. 10 to 6
Thurs., Fri. 10 to 8; Sat. 10 to 4

DON'T LOOK ANY FURTHER!
YOU'LL FIND IT IN LANCASTER FARMING'S CLASSIFIEDS

CHORE-TIME. BINS AND AUGERS

We Stock Truckloads Of Chore-Time Bins & Miles Of Chore-Time FLEX-AUGER

Take 'em Down!

Put 'em Up!

Bins... Large Or Small

Authorized CHORE-TIME Master Distributor

Custom Applications

We Will Assemble & Deliver Bins To Your Farm

Northeast agri systems

Northeast Agri Systems, Inc.
FLYWAY BUSINESS PARK
139 A West Airport Rd.
Lititz, PA 17543
(717) 569-2702 1-800-673-2580

FOR FREE ESTIMATES CALL OUR TOLL-FREE CUSTOMER SERVICE NUMBER: 1-800-673-2580

STORE HOURS
Mon-Fri. 7:30-4:30
Sat. 8:00-Noon