


Virginia



Cattle & Hogs

Virginia Weekly
 Richmond, Va.
 Wednesday, May 19, 1993
 WEEKLY REVIEW IN VIRGINIA:
 REVIEW OF VIRGINIA DIRECT HOGS

FOR THE PERIOD MAY 12-18, 1993.
 RECEIPTS FOR COUNTRY BUYING
 STATIONS IN VIRGINIA FOR THE
 PERIOD TOTALED 1930 HEAD.
 RECEIPTS FOR DELIVERY TO THE
 PLANT (WITHIN A 30 MILE RADIUS)

FOR THE PERIOD TOTALED
 5114 HEAD. THE VIRGINIA DIRECT
 HOG MARKET FOR TUESDAY MAY
 18, CLOSED \$1.50 HIGHER COM-
 PARED TO LAST TUESDAY'S
 TRADING.

BARROWS AND GILTS: VIRGINIA
 COUNTRY POINTS U.S. 1-3 220-250
 LBS 44.50-47.50.

LOCAL PLANT DELIVERED (30
 MILE RADIUS).

US 1-2 220-250 LBS. 46.00-46.
 50 FEW 47.00 US 2-3 220-250 LBS.
 45.50-46.00 US 1-3 200-210 LBS.
 42.50-43.00 US 1-3 210-220 LBS.
 44.50-45.00 US 2-4 250-260 LBS.
 43.50-44.00 US 2-4 260-270 LBS.
 41.50-42.00.

SLAUGHTER STEERS AND HEIF-
 ERS 1%; SLAUGHTER COWS 16%
 SLAUGHTER BULLS 3%, SLAUGH-
 TER CALVES AND VEALERS 0%;
 FEEDER CATTLE UNDER 600 LBS

59%, OVER 600 LBS 21% PRICE
 RANGES FOR VIRGINIA WEEKLY
 AUCTIONS.

SLAUGHTER CATTLE: TOTAL
 HEAD COUNT 15 STEERS: CHOICE
 2-3 1000-1150 LBS ---- CHOICE 2-3
 1150-1300 LBS.

HEIFERS: STANDARD 1-2 850-1100
 LB 58.00-65.00 CHOICE 1-2 950-1100
 LBS ---- CHOICE 1-2 1100-1300 LBS.

SLAUGHTER COWS TOTAL HEAD
 COUNT 654 UTILITY & COMMER-
 CIAL COWS 41.00-56.50.

SLAUGHTER BULLS: HEAD
 COUNT 116 BULLS - 1-2 900-1300 LBS
 51.00-67.25 FEW 74.00 1-2 1300-1600
 LBS 55.00-72.50 1-2 1600 LBS & OVER
 55.00-66.25 FEW 70.50.

SLAUGHTER CALVES & VEALERS
 TOTAL HEAD COUNT 15 HEAD
 CALVES - GOOD AND CHOICE
 250-500 LBS 69.00-73.00 VEALERS -
 CHOICE & PRIME 200-350 LBS.

SLAUGHTER LAMBS TOTAL HEAD
 COUNT 392 (NEW CROP) CHOICE
 FEW PRIME 1-2 FEW 3 90-110 LBS
 67.00-72.50 GOOD & FEW CHOICE 1-2
 80-90 LBS 78.50 (OLD CROP) CHOICE
 & PRIME 3-4 140 LBS FEW 35.00
 CHOICE AND FEW PRIME 1-2 FEW 3
 108-109 LBS 55.00-60.25.

SLAUGHTER HOGS TOTAL HEAD
 COUNT 74 US 1-3 200-250 LBS
 39.50-42.00 SOWS US 1-3 300-500 LBS
 36.00-38.00 FEW 22.00 500 LBS &
 OVER 35.00-39.75.

FEEDER CATTLE TOTAL HEAD
 COUNT FOR ALL WIEGHTS 3219
 STEERS: MEDIUM 1 200-300
 106.00-128.00 FEW 98.50 300-400
 102.00-119.00 FEW 97.00 400-500
 98.00-112.00 FEW 91.00 500-600
 90.00-107.25 600-700 81.00- 97.00
 700-800 77.00- 88.50 800-900 75.00-
 85.00

HEIFERS: MEDIUM 1 300-400
 90.00-107.00 FEW 84.00-89.50 400-500
 87.00-104.00 500-600 80.00- 98.00
 600-700 73.50- 85.00 700-800 73.00-
 80.50 800-900 75.00.

SPECIAL GRADED SLAUGHTER
 CATTLE SALE HELD AT FREDER-
 ICKSBURG ON MAY 13, 1993. 246
 HEAD SOLD.

STEERS: CHOICE 2-3 1000-1150 LB
 81.50-83.25 CHOICE 2-3 1150-1300 LB
 79.10-83.60 CHOICE 2-3 1300-1450 LB
 77.00-80.00 SELECT 2-3 1000-1200 LB
 74.70-81.50 SELECT 2-3 1290-1425 LB
 75.50-78.00.

HEIFERS: CHOICE 2-3 950-1050 LB
 76.50-81.00 CHOICE 4 950-1050 LB
 68.50-74.50 CHOICE 2-3 1100-1300 LB
 77.00-82.00.

Southside (Blackstone), Va.
 Wednesday, May 19, 1993

PRICES BASED IN OUT WEIGHTS.
 SLAUGHTER CATTLE 49 HEAD.
 SLAUGHTER COWS 42 HEAD
 COWS CUTTER & BONING UT. 1-3
 47.00- 55.00 BREAKING UT. & COMM.
 2-4 45.00 - 53.75 CANNER AND LOW
 CUTTER 1-2 42.00 - 43.25.

SLAUGHTER BULLS 7 HEAD
 BULLS Y.G. 1-2, 900-1300 LB. 50.00 -
 62.00 Y.G. 1-2, 1300-1600 LB. 54.50 -
 60.50 Y.G. 1-2, 1600 LBS. & OVER
 65.50.

FEEDER CATTLE 240 HEAD
 STEERS MEDIUM 1 LARGE 1 SMALL
 1 MED & LARGE 2 200-300 - - -
 106.00-107.00 300-400 105.00-113.50
 105.00-113.50 85.00-105.00
 100.00-106.00 400-500 98.50-108.50
 98.50-108.50 - 100.00-105.00 500-600
 96.00-100.00 96.00-100.00 87.00- 97.00
 92.00- 98.50 600-700 87.50- 90.00 87.50-
 90.00 - - 700-800 85.00 85.00 - - 800-900
 78.00- 80.50 - - - HOLSTEIN STEER
 MED & LARGE 2 300- 500 78.50- 86.00.
 HEIFERS MEDIUM 1 LARGE 1

SMALL 1 MED & LARGE 2 200-300 - - -
 91.00-105.00 300-400 90.00-102.50
 90.00-102.50 87.00- 89.50 91.00- 94.50
 400-500 80.50- 91.00 80.50- 91.00 75.00-
 85.00 80.00- 89.00 500-600 75.00- 86.50
 75.00- 86.50- 78.00- 85.00 600-700 72.50-
 84.00 72.50- 84.00 - 71.00- 72.50 BULLS
 MEDIUM 1 LARGE 1 SMALL 1 MED &
 LARGE 2 200-300 - - - 105.00-118.00
 300-400 100.00-104.50 100.00-104.50 -
 88.00- 90.50 400-500 99.00-106.00
 99.00-106.00 78.50- 86.00 80.50- 94.00
 500-600 84.50- 89.00 84.50- 89.00 - 84.50
 600-700 - - - 68.50 BABY CALVES
 RETURNED TO FARMS 12 HEAD
 NEWBORN TO 4 WEEKS OLD
 \$52.50-110.00 PER HEAD. OVER 100
 LBS \$120.00-139.00 PER CWT.

Smithfield, Va.

Wednesday, May 19, 1993
 SLAUGHTER HOGS 108 HEAD
 BARROWS AND GILTS US 1-3,
 200-250 LB. 44.00 - 46.00 US 2-4,
 300-400 LB. 33.00 - 36.50 SOWS US 1-3,
 300-500 LB. 35.00 - 36.80 US 1-3, 500
 LBS. & OVER 39.25 - 41.00 BOARS
 300-600 LB. 35.00 - 39.00.

SLAUGHTER CATTLE 13 HEAD.
 SLAUGHTER STEERS & HEIFERS 5
 HEAD STEERS CHOICE 2-3, 800-1150
 LB. 72.00 - 75.50.

HOLSTEIN STEERS SELECT 1-2,
 1100-1600 LB. 62.00 - 65.00.
 HEIFERS CHOICE 2-3, 950-1100 LB.
 68.00 - 70.50.

SLAUGHTER COWS 8 HEAD COWS
 CUTTER & BONING UT. 1-3 42.00 -
 45.00 BREAKING UT. & COMM. 2-4
 48.50 - 50.50.

GOATS 16 HEAD BILLIES LARGE
 55.00 - 85.00 NANNIES MEDIUM 30.00
 - 43.00 SMALL 31.00 - 36.00 KIDS 16.00
 - 29.00 MUTTON 50.00 - 57.00.

FEEDER CATTLE 30 HEAD - TOO
 FEW TO QUOTE PRICES.

Shenandoah Valley Livestock

Harrisonburg, Va.
 May 15, 1993

Report supplied by auction

STEERS: M&L-1 300-500 LBS.
 107.00-118.50; 500-700 LBS.
 89.75-105.00; HOLSTEIN 300-500 LBS.
 67.00-90.50.

S-L&M&L-2: 300-500 LBS.
 99.50-108.00.

FEEDER BULLS: 300-500 LBS.
 104.00-105.00; 500-700 LBS. 79.00-89.50.

HEIFERS: 300-500 LBS. 89.00-93.50;
 500-700 LBS. 79.50-89.00; 700-1000 LBS.
 70.50-81.00.

S-L&M&L-2: 300-500 LBS.
 79.00-89.00.

STOCK COWS: BEEF MEDIUM
 FRAME WITH CALVES 550.00-775.00,
 LARGE FRAME WITH CALVES
 700.00-960.00; BABY CALVES
 80.00-130.00.

SLAUGHTER COWS TREND: UTILI-
 TY AND COMMERCIAL 2-4
 47.75-53.75; CANNER AND CUTTERS
 1-3 41.00-48.00.

SLAUGHTER BULLS: 55.00-62.00.

LAMBS: BLUE O HIGH CHOICE
 AND PRIME 67.00-70.00; RED O
 CHOICE 68.50; FEEDER LAMBS
 CHOICE 73.25-73.50; SLAUGHTER
 EWES 11.50-15.50.

HOGS: US#1-3 200-240 LBS. 41.00;
 SOWS 1-3 32.50; BOARS 24.25-25.50.

Milking cows, dry cows, helpers, calves,
 and beef cattle throughout
 Pennsylvania, Maryland, and
 Canada are experiencing
 the benefits of White
 Oak's newest
 product

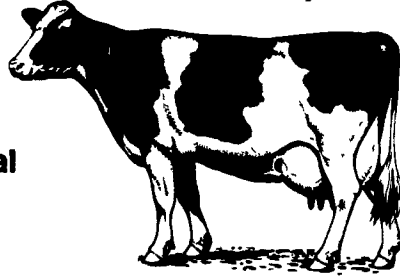
NUTRI-CATALYST

A Profitable Investment In The Future Of Your Herd

BST COMPANION PRODUCT

Nutri-Catalyst is a
 dietary ingredient that enhances
 the nutritional value of virtually
 all types of cattle rations and is designed

as a rumen modulator
 that improves fermentation and
 digestion. It increases the availability
 of protein, energy, minerals, and
 vitamins in practical forage and cereal
 grain diets.



FEED: 1 Ounce Per Head Per Day (TMR or Top Dress).

Can Be Used With Any Feeding Program To:

- Improve persistency of milk production
- Obtain higher peak milk yield
- Improve milk quality, protein and fat test
- Improve utilization of good and marginal quality forage
- Improve hoof health and immunity
- Re-establish intestinal microflora following digestive upsets



Quality People, Products & Service
 Working for YOU.

For more information on
 Nutri-Catalyst, contact
 your local White Oak
 representative or call
 our dairy nutritionist.

Dealer Inquiries Invited

PA, MD Toll Free
 1-800-468-5524

Elizabethtown
 (717) 367-1525

Pinola
 (717) 532-7845

HAY CHEMICALS AND APPLICATION EQUIPMENT

Swather's Choice
 Alfalfa Hay Drying Agent

available from



Baler's Choice
 Buffered Acid Preservative



Swather's Choice is a liquid hay drying agent that will reduce curing time by one-third, soften hay stems and help retain general hay quality.



Baler's Choice is a buffered propionic acid preservative that will allow for baling up to 30% moisture without corroding equipment.

Available from: • Hooper Mill 717-768-3431
 • David O. Fink 215-767-1408