

**Morrison Cove Livestock**

Martinsburg, Pa.  
May 17, 1993

Report supplied by auction

CATTLE 275. STEERS CHOICE 80.50-84.25; GOOD 77.00-79.75. HEIFERS: CHOICE 79.50-83.50; GOOD 76.50-78.75.

COWS: UTILITY & COMMERCIAL 48.50-56.75; CANNER & LOW CUTTER 39.50-53.75.

BULLOCKS: GOOD & CHOICE 63.50-70.50.

BULLS: YIELD GRADE NO. 1 59.50-68.75.

FEEDER CATTLE: STEERS 74.50-105.00; BULLS 70.50-94.50; HEIFERS 65.00-88.50.

CALVES 238. PRIME, NO MKT. TEST; CHOICE, 95.00-101.00; GOOD, 82.00-94.00; STANDARD 40.00-65.00; HOLSTEIN BULLS 90-130 LBS. 145.00-177.00; HOLSTEIN HEIFERS 90-130 LBS. 152.00-189.00.

HOGS: 196. US NO. 1-2 46.00-47.50; US NO. 1-3 44.50-45.75.

SOWS: US NO. 1-3 32.00-41.00 BOARS 32.00-34.50.

FEEDER PIGS: 19 HEAD. US#1-3 20-50 LBS. 21.00-32.00.

SHEEP: 39 HEAD. CHOICE LAMBS NO MKT. TEST; GOOD LAMBS 65.00-71.00; SLAUGHTER EWES 19.00-24.50.

GOATS: 12.00-66.00.

19 LOADS OF HAY. ALFALFA 101.00-118.00; TIMOTHY 65.00-83.00; 1 LOAD OF STRAW 81.00; 2 LOADS OF EAR CORN 70.00-82.00.

**North Jersey Livestock**

Hackettstown, NJ  
Tuesday, May 18, 1993

Report supplied by auction

CALVES 32-200

COWS 30-63

EASY COWS 10-41 1/2

HEIFERS 44-81 1/2

BULLS 51-69 1/2

STEERS 54-81

HOGS 28-41 1/2

ROASTING PIGS EACH 20.00-42.00

BOARS 30

SOWS 31 1/2 - 33 1/2

SHEEP 15-51

LAMBS EACH 15.00-69.00

LAMBS PER LB 36-1.08

GOATS EACH 27.00-142.50

KIDS EACH 10.00-71.00

TOTAL 1239

**Grantsville Livestock**

Grantsville, Maryland  
Sat., May 15, 1993

HOGS. TOP BARROWS & GILTS 45.00-47.20; HEAVY BUTCHER 45.00-46.50; LIGHT BUTCHER 44.50-45.50; BUTCHER SOWS 30.00-35.00, FEEDER SHOATS 20.00-40.00.

VEAL: GOOD 75.00-95.00; STANDARD 45.00-70.00; UTILITY 40.00 TO DOWN; BULL CALVES 100.00-135.00; BEEF CALVES UP TO 170.00.

SHEEP & LAMBS: GOOD 60.00-75.50; UTILITY 50.00-58.00; SLAUGHTER EWES 18.00-25.00.

SLAUGHTER CATTLE: STANDARD 70.00-74.00; UTILITY 62.00-68.00.

HEIFERS: GOOD 74.00-76.50; STANDARD 68.00-72.00; UTILITY 60.00-65.00.

COWS: HIGH DRESSING UP TO 57.00; COMMERCIAL 48.00-53.00; UTILITY 44.00-47.00; CANNER & CUTTER 42.00 TO DOWN.

BULLS: COMMERCIAL AND GOOD 65.00-72.50; CUTTER AND UTILITY 58.00-64.00.

STOCK-FEEDER BULLS: GOOD 70.00-80.00; MEDIUM 60.00-68.00.

STEER CALVES: MEDIUM 60.00-75.00.

HEIFER CALVES: GOOD 75.00-90.00; MEDIUM 60.00-70.00.

EGGS: LARGE .50-.55; MEDIUM .40-.50.

**Leola Produce Auction**

Leola, PA

May 18, 1993

Report Supplied by Auction

ASPARAGUS: 1.20-1.65 12 OZ. BUNCH, 1.00-1.20 PER LB. LOOSE.

LETTUCE: 8.00-10.00 16-18 CT. SPRING GARLIC, BUNCHED: 10.75-13.50 30-CT.

ONIONS: 12.75-17.50 35-40 CT. BUNCH.

POTATOES: 3.00-4.00 50 LBS. RADISHES: 10.50-15.00 40 CT. BUNCH.

RHUBARB: 7.50-13.00 15 LBS. SPINACH: 6.00-9.00 1 1/9 BU.

TOMATOES: HOTOHOUSE 12.00-16.00 10 LBS #1, 38.00-48.00 25 LB. HOTOHOUSE.

SHRUBBERY: AZALEAS 4.25-5.75 EACH; ARBORVITAE, PYRAMID AND GLOBE TYPE 8.50-10.00; BIRD'S NEST SPRUCE AND ALBERTA SPRUCE

13.50-15.50; BURNING BUSH 5.50-6.00; RHODODENDRON MIXED COLORS 9.50-11.75; UPRIGHT AND SPREADING YEW 4.75-6.50.

BEDDING PLANTS: ASSORTED VARIETY OF FLOWERS 5.00-9.50 FLAT; PANSIES 1.20-3.50 FLAT; GERANIUMS, DAHLIAS POTTED 1.25-3.75 EACH; GLOXINIA 1.25-3.75 EACH; ASSORTED HERBS AND PERENNIALS 7.50-11.50 FLAT; VINCA 8.25-12.00 FLAT; WINDOW BOXES 7.50-13.50 EACH; ASSORTED HANGING BASKETS 4.50-8.50 EACH; ASTERS AND ZINIAS: 11.50-14.00 FLAT; SWEET WILLIAM 6.25-9.25 FLAT.

VEGETABLE PLANTS: PATIO TOMATO PLANTS .85-1.75 EACH; TOMATOES, PEPPERS, EGGPLANT 5.00-8.50 FLAT; BROCCOLI, CABBAGE, CAULIFLOWER 2.75-4.75 FLAT; CUCUMBERS, ZUCCHINI, WATERMELON AND CANTALOUPE 4.00-6.00 FLAT; SNAP AND LIMA BEANS 4.75-5.50 FLAT.

BARK MULCH: 1.50 2 1/2 CU. FT. BAG.

NEXT WEEK'S SALE DAYS MONDAY, TUESDAY, THURSDAY, AND FRIDAY, 10 A.M.



**Pennsylvania Livestock Auction**

Waynesburg, Pa.

Thurs., May 20, 1993

Report Supplied by Auction

CATTLE: SL. COWS: UTILITY & COMMERCIAL 50.00-58.85; CUTTER & BONING UTILITY 47.00-55.00; CANNER & LOW CUTTER 42.00-51.00; SHELLS 42.00 & DOWN. BULLS: YIELD GRADE 1 1500#-1870# 58.50-74.25; YIELD GRADE 2 1000#-1400# 48.00-67.50.

FEEDER STEERS: M&L-1 300-500# 77.00-108.00; 250-280# 85.00-112.00, M 900-1000 60.00-76.00. HEIFERS M 1&L-1 300-500# 70.00-97.00; L-1 400-650# 55.00-92.00. BULLS M&L-1 300-620# 58.00-94.00.

CALVES: VEAL.. PRIME 95.00-115.00; CHOICE 74.00-100.00; GOOD 60.00-72.00.

FARM CALVES: #1 HOLSTEIN BULLS 90-120# FEW 80.00-150.00; #2 HOLSTEIN BULLS 80-100# FEW 75.00-95.00; BEEF X BULL&HFERS./HD 85.00-175.00.

HOGS: BARROWS & GILTS #1-2 210-255# 45.00-48.50; #2-3 255-280# 37.50-45.00; SOWS #1-3 300-500# 39.00-41.50.

FEEDER PIGS: 1-3 25-35# 15.00-30.00/HD.

LAMBS: HIGH CHOICE 55-75 LBS 50.00-80.00; CHOICE 90-105# 70.00-78.00. FEEDER LAMBS GOOD 55.00-70.00; EWES 15.00-27.00.

GOATS: LARGE 35.00-60.00/HD.; MEDIUM 25.00-45.00/HD.; SMALL 10.00-19.00/HD

HORSES. 45.00-74.50, PONIES 20.00-48.00.

**"BELT BUSTERS"**

Save on Flat Belts for Your Farm Machinery! We Will Make the Belt You Need and Ship Same Day by U.P.S. - We're Fast!

- ★ Bale Thrower Belts
- ★ Round Baler
- ★ Harvesting Machines Like Bean, Cherry, Grape, Etc.
- ★ Forage Box Belts for Gehl, Grove Kasten, New Idea, Etc.

Quality Belts at Farmer Prices

SORRY, NO V-BELTS

**Agricultural Belt Service**

10632 Rt. 75  
Eden, New York 14057

PHONE 716-337-BELT



**Water Quality An IMPORTANT Ingredient In Livestock Management**

It's a fact! Contaminated water can have a costly effect on your livestock and poultry performance. Our years of experience plus hundreds of farm related treatment systems has proven the validity and practicality of correcting contaminated water.



**Martin Water Conditioning Co.**  
SPECIALISTS IN FARM WATER TREATMENT

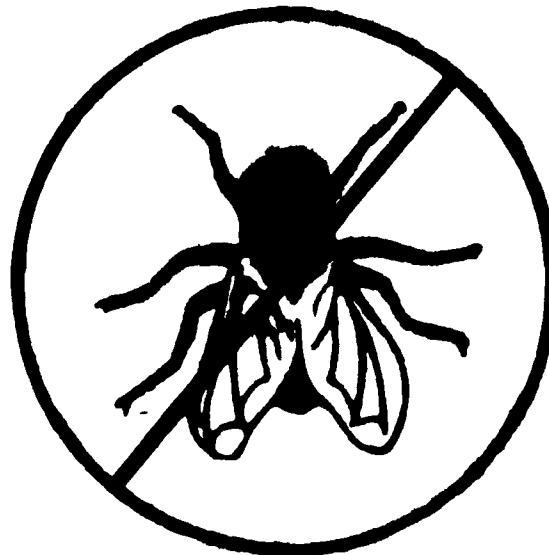
Call us today for treatment of:  
\*Nitrates \*Bacteria \*Iron \*Sulfates  
\*pH \*Acidity/Alkalinity

548 New Holland Ave.  
Lancaster, PA 17602  
(717) 393-3612  
Along Rte. 23

Willis Sharp  
Somerset, PA &  
Surrounding Counties  
(814)-893-5081

740 E. Lincoln Ave.  
Myerstown, PA 17067  
(717) 866-7555  
Along Rte. 422

**HESS MILLS**



**"STOP FLIES BEFORE THEY GET STARTED"**

**Call Hess Mills for all your Purina fly control products.**

**★ Big Discounts For Early Orders ★**

**Example: Easy Duster Dust Bags 18% Off Reg. Price**

**HESS MILLS**



6 S. Vintage Rd.  
Paradise, PA 17562  
(717) 442-4183  
(717) 768-3301

Rt. 82  
Unionville, PA 18375  
(215) 347-2377

\* Registered trademark of Raiston Purina Company

™ Trademark of Purina Mills