

Best Buys in Used Equipment



New Holland 1495 Haybine, Gas, Vari Drive, 12' Cut Runs Good, \$4,795.

TRACTORS

- IH 1086, cab, 2WD, rebuilt TA.....\$15,000
- Case 1410, cab, 80 H.P.....\$7,700
- Oliver 1550, gas, WFE.....\$ 3,300

SKID STEERS/BACKHOES

- Case 1835B, diesel - reduced.....\$ 6,500
- IH 3200B, gas.....\$ 3,300
- Skat Trak, 40 H.P. diesel.....\$ 7,900
- Case 580D, 2WD, ROPS.....\$13,000

HAY & FORAGE

- NH 479 Haybine.....\$2,000
- NH 488 Haybine.....\$1,500
- NH 489 Haybine.....\$1,500
- NH 489 Haybine.....\$2,000
- Gehl 1090 Haybine.....\$2,800
- JD 1327 Discbine.....\$5,500
- Hesston 1014 Haybine.....\$1,300

- NH 315 baler w/thrower
- New Holland 25 & 27 forage blowers
- New Holland 1495 self-propelled, gas
- Gehl HA900 hay head 9'
- Gehl TR680, 2RW row crop
- Gehl 1560 forage blower
- New Idea 456 round baler, 5x6
- New Idea 5407 disc mower, 3 pt. 7' cut

PLANTERS/MISCELLANEOUS

- MF 52, transport disk, 12'
- Brillion 9 tooth chisel plow, hi clearance
- New Idea 323 corn picker, 1 row
- JD 8350 grain drill, 18x7 w/grass seed and fertilizer
- IH 800 corn planter, 4 RN- reduced \$2,900
- Ag Tech 665 loader for small diesel tractor
- Kidd, small bale chopper, 3 pt.
- Dual wheels for IH 66 series, 18.4x34.....\$300
- GMC, V6, diesel engine, overhauled, \$1,995

MANURE SPREADERS

- Martin 1678 Scavenger, \$2,400
- NI 360, endgate, 150 bu.
- NI 3626 endgate, 260 bu.
- NI 3639, 10 ton, endgate

A.L. HERR & BRO.

Park Ave., Quarryville, PA 17566
(717) 786-3521
We Ship Parts U.P.S.



Clugston Ag & Turf, Inc.
Chambersburg, Pa.

JOHN DEERE JD 5440 w/new Power Mizer Cutter Head w/7' Pick-up & 3RN, (Sharp)

- | | |
|---------------------|-----------------------------|
| JOHN DEERE | Rotary Cutters |
| New Tractors | JD 717 |
| 6300 MFWD | JD 503 |
| 6200 MFWD, CG, Cab | Loaders & Blades |
| 5300 | JD 540 |
| 4255 PS, SG | JD 640 |
| | JD 65 Blade |

Compact Utility Tractors (New) **BOBCAT NEW**

- 770
- 753
- 642B

Spreaders JD 874

Misc. New Miller 5100 Forage Boxes

Tillage JD 875 4R Cult.

Farm Aid Mixer Wagons

Dion Forage Boxes

Kverneland Plows

Forage JD 5830

USED JD 3 Bottom 3 Pt Hitch Plow

JD 3950 Harvester

JD 216 Flex head

JD 3 Meter Hay Pickup

NH 850 Round Baler

JD 336 w/30 Ejector

JD 650 3 PTH Rake

JD 3970

JD 3960

JD 4RN Head

JD 1440 w/Dry Fert

JD 1209

NH 489 Haybine

NH 499 Haybine

JD 7000 6RN w/Dry Fertilizer

Planters JD 7200 6RN w/L fert.

JD 7200 6RN w/D fert.

Drills 450 10' & 12'

Balers JD 328

JD 335

JD 348

JD 375

JD 435

Mower Conditioners JD 1470

JD 1360

JD 1600, 14'

Used Lawn & Garden JD 318 w/46"

JD 420 w/60



3213 Black Gap Rd. Chambersburg, PA 17201

717-263-4103

1-800-377-3040

USED EQUIPMENT IN STOCK

- | | | |
|-----------------------|------------------------------|------------------------------------|
| TRACTORS | SKID LOADERS | BALERS & HAY TOOLS |
| Case 1690 (L) | Bobcat 642B | NH 855 Round Baler |
| Massey Harris 101 JR. | NH 425 | NH 275 Baler w/Thrower |
| | LAWN & GARDEN | NH 326 Baler w/Thrower |
| | Ford YT 12.5 | NH 1499 Haybine |
| | Simplicity 4211 Lawn Tractor | NH 1495 Self-Propelled Haybine (L) |
| | w/Mower | NH 411 Discbine (L) |
| SPREADERS | Cub Cadet 108 | NH 488 Haybine (L) |
| NH 813 Spreader | JD 111 w/bagger | |
| NH 819 Spreader | | |
| NI 354 w/Pan | | |

NORMAN D. CLARK & SON

Honey Grove, PA 17035
717-734-3682

We Ship Parts Daily U.P.S.



Located 14 Miles South of Port Royal on Rt. 75

2nd Location — Loysville, PA

717-789-3117

(L) Indicates equipment at Loysville location.

Best Buys in Used Equipment

TRACTORS

- | | | |
|-----------------|---------------|-----------------|
| IH 424 | Case 2670 | JD 4430 |
| IH 484 | Case 2870 | JD 2940 MFD |
| IH 656 | ST PT350 | Versatile 256 |
| IH 574 | ST 251 | White 2-155 |
| IH 886 | ST Panther II | MF 1155 |
| IH 574 w/Loader | JD 4630 | MF 699 w/Loader |
| Case 2290 | | |

DISCS

- | | | |
|--------------|-----------------|-----------------|
| AC 2600, 26' | KR 4926A, 22'6" | KR 1927, 25' |
| BH 16' | KR 4927A, 25' | JD 235, 18' |
| Case 18' | KR 2440 26' | JD 210, 15' |
| Case 30' | KR 4907 25' | JD 310, 16' |
| IH 470, 18' | KR 2410 | JD 630, 16' |
| IH 496 | KR 1966 31' | Sunflower H3-22 |
| IH 370, 13' | | |

FIELD CULTIVATORS

- | | |
|-------------------------------|------------------------------|
| KR 4129 42' Field Cultivator | IH 25' Field Cultivator |
| (3) KR 3131 Landsman | IH 45 Field Cultivator 16' |
| KR 4100 37' Field Cultivator | IH 4RN Field Cultivator |
| KR 3121 Landsman | JD 960, 21' Field Cultivator |
| KR 3122 Landsman | SF 25' Landsman |
| Case 26' Field Cultivator | WR 24' Field Cultivator |
| IH 4500 Field Cultivator, 27' | |

PLOWS

- | | |
|-------------------------|-----------------------------|
| CI 5600 Chisel Plow 11' | JD 2350-2450 8x18 Plow |
| CI 800 Plow, 9x18 | JD 2800 7 Bottom Vari Width |
| SF 2330 Chisel Plow | KR 2321 Chisel Plow, 24' |
| IH 700 Plow 8x16 OL | Oliver 568 Plow, 6x18 |
| IH 700 7x16 Plow | Taylorway 11 Chisel Plow |
| IH 55 Chisel Plow | White 6x16 Plow |
| BR 16' Chisel Plow | ST 2211 14' Chisel Plow |
| BR 12' Chisel Plow | |

MISC. TILLAGE

- | | |
|------------------------------------|-----------------------|
| UM 35' Dbl. Rolling Baskets | DL 14' Packer |
| UM 37' Dbl. Rolling Baskets | DL 34' CF Packer |
| UM 24' Dbl. Double Rolling Baskets | BR 25' Cultimulcher |
| DMI Tiger II Subsoiler 7 Shank | BR 12' N Cultimulcher |
| Tebbins 7 Shank Subsoiler | BR 14' CF Packer |
| KR 3613 Land King | BR 21' Packer |
| | BR 27' N Packer |
| | BR 28' N Packer |

MISCELLANEOUS

- | | |
|-------------------------------|-------------------------------|
| GP 24' Conventional Drill | (3) JD 8300 Drill, 18x7, 26x6 |
| CI 5100 Drill, 24x6 | JD 7100 12R Planter |
| CI 5100 Drill | IH 5100 Drill, 21x7 |
| CI 5300 Drill w/Culti-Planter | NH 352 Grinder Mixer |
| John Blue 500 Gal. Sprayer | RH FL 20' Mower |
| JD 27 Shredder 15' | |

HAY EQUIPMENT

- | | | |
|--------------------|--------------------|--------------------|
| CI 8580 Baler | NH 90 Bale Stacker | IH 990 Mower Cond. |
| Hesston 4900 Baler | MF 560 Round Baler | Badger Round Baler |

COMBINES

- | | | |
|------------------|------------------|----------|
| (2) Case IH 1680 | IH 1480 | MF 760 |
| Case IH 1460 | JD 4400 | MF 540 |
| Case IH 1480 | (3) JD 6620 | NH TR 85 |
| Case IH 1640 | JD 7720 4WD | NH TR 86 |
| IH 1440 | JD 7720 | |
| (2) IH 1460 | JD 8820 Titan II | |

Large Selection Of Cornheads And Platforms Available



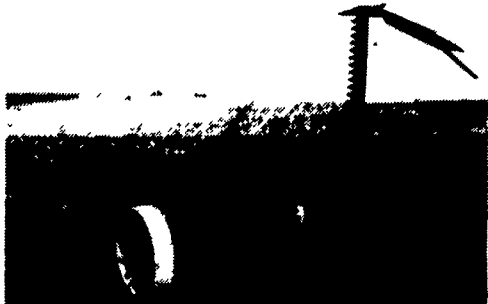
(302) 378-9555 1-800-341-4028



The I & J Cultivator

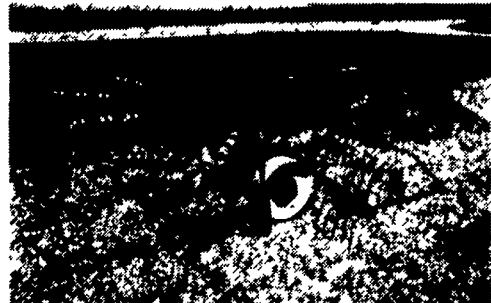


CULTIVATORS: 3 point or horse drawn available in 1-2-3- or 4 rows can be used as a field cultivator with a few attachments. Great for vegetables. We can custom build. Options: rolling shields, disc hillers, liquid side dressers, row tracking system.

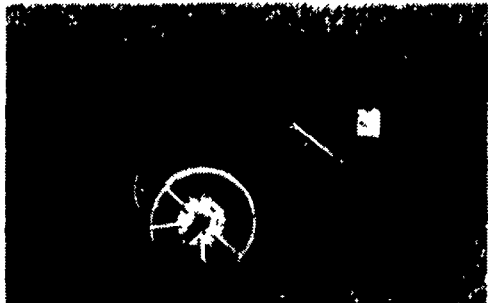


MOWERS: 3 point or trailing features: guards & blade, move back and forth cuts like a scissors, virtually no plugging.

2% OFF ALL CULTIVATORS BOUGHT UP TO 5-31-93



RAKES: available in ground drive or PTO steel wheels or rubber tires Features: forms a very fluffy windrow, can also be used as a windrow inverter. Does not rope hay. A real leaf saver.



DEEP TILL SLITTER: Available in 1 or 2 shanks, optional hydraulics.

Corn binders: get your orders in by June 1.

We Also Carry Flex Tine Harrows

I & J MANUFACTURING

Dept. LF, 5302 Amish Road • Gap, PA 17527

717-442-9451

(Call Between 8:45-9:00 A.M. Weekday Ask For Jake)