

JONES CENTER

IS YOUR

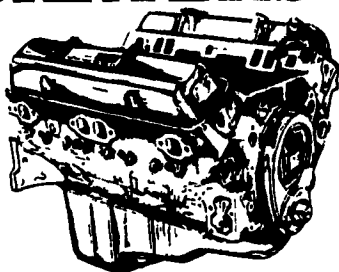
Goodwrench ENGINE HEADQUARTERS

GM GOODWRENCH 350 V8 1973-85
Part Number 10067353

New Engine - Not Rebuilt
36 Month or 50,000 Mile
Warranty

\$1199⁰⁰

New Engine - No Core Fee
Special Price



Call 394-0711 for prices on other New or Remanufactured
Goodwrench Engines. 2.5 Liter thru 454 cid. Gas and Diesel

Chevrolet - Pontiac - Olds - Buick - Cadillac - GMC

JONES GM PARTS CENTER

1335 Manheim Pike, Lancaster, PA 17604

Hours: Mon.-Fri. 7:30-5

(717) 394-0711



Mr. Goodwrench



1983 Ford F-250 Super Cab
With 9 Ft. Flat Bed, 460, Auto,
PS, PB, AM-FM, 8,800 GVW,
Class 3 Hitch
\$3,600
717-733-2873

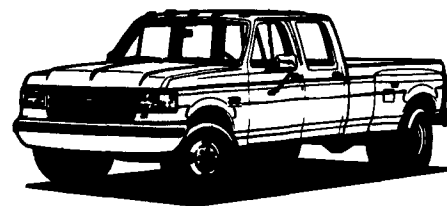
REFRIGERATED TRUCKS FOR SALE



Can Be Used For Cold Storage
Inside Or Outside 14'-22' Boxes
Starting \$3500 And Up
201-663-0243

35 TRUCKS & TRAILERS

'93 FORD CREW CABS



IN STOCK:

- (4) '93 Diesel, Stick
- (1) '93 Diesel, Auto
- (4) '93 Centurions, Diesel, Stick

SHEEHY LEBANON

FORD • MERCURY • LINCOLN

4-9 Daily 9-5 Saturday Sheehy Hotline (717) 272-7671 or 533-5293
20th & CUMBERLAND STS - RT 422 WEST

JONES

PONTIAC • HONDA
GMC TRUCK
1335 Manheim Pike, Lancaster
394-0711

JONES BEST BUY USED TRUCKS

 '89 CHEVY K BLAZER 350, Silverado, AT, AC, 30,000 Mi. #7521 Was \$14,900 NOW \$12,900	 '89 CHEVY EXT. CAB 4x4 350, AT, AC, Silverado #7491 140,000 Mi. Was \$12,900 NOW \$8,900	 DIESEL '90 CHEVY SUBURBAN 6.2 Diesel, AT, AC, Silverado, 9 Pass, #7450 Was \$19,900 NOW \$17,100	 DIESEL '85 CHEVY 1 TON DUALY 4x4 4 Spd., Silverado, AC, 57,000 Mi., #7518 Was \$10,995 NOW \$8,750
 '91 CHEVY EXT CAB 4x4 6 1/2 Ft. Bed, 350, AT, AC, Silverado #7436 Was \$19,900 NOW \$17,400	 '92 CHEVY CREW CAB 4x4 DUALY 3000 Mi., 454, Silverado, Factory Vehicle #7392 Was \$29,700 NOW \$25,900	 '88 CHEVY S-10 EXT. CAB 4x4 V6, AT, AC, Black, Clean, #7488 Was \$11,995 NOW \$9,900	 DIESEL '84 CHEVY SILVERADO 47,000 Mi., AT, AC, Clean #7513 Was \$8,495 NOW \$7,100
 '91 JEEP WRANGLER 18,000 Mi., 4 Cyl., 5 Spd., #7444 Was \$12,900 NOW \$10,300	 '89 CHEVY C-10 PICKUP V8, AT, PS, PB, #7458 Was \$7,995 NOW \$5,350	 '92 GMC 1 TON EXTENDED CARGO VAN 350, AT, AC, PL, Cruise, Tilt, #7108 Was \$19,300 NOW \$14,400	 6.5L TURBO DIESEL NEW '93 GMC 3/4 TON EXT CAB 4x4 SLE, AT, AC, Loaded #2310 Was \$27,327 NOW \$26,100
 '87 FORD BRONCO II V6, AT, AC, XL, #7517 Was \$7,995 NOW \$5,950	 '83 CHEVY SUBURBAN 4x4 AT, V8, AC, Silverado #7478 Was \$7,495 NOW \$4,975	 '87 DODGE CARAVAN 5 Pass., AT, AC, #7519 Was \$8,995 NOW \$6,100	 DIESEL '90 CHEVY 3/4 TON EXT. CAB Silverado, AT, AC, Loaded, #7302 Was \$16,995 NOW \$13,400
 '92 GMC EXT. CAB 1 TON DUALY 454, AT, AC, 18,000 Mi., #7475 New Was \$27,500 NOW \$19,400	 '88 CHEVY 3/4 TON 4x4 SUBURBAN AT, AC, 350, Silverado #7487 Was \$14,900 NOW \$11,900	 '85 FORD F-250 SUPERCAB 4x4 V8, AT, Runs Great #7429 Was \$8,995 NOW \$6,500	 DIESEL '91 GMC SUBURBAN AT, AC, 9 Pass., Sierra Classic, 6.2 Diesel, #7464 Was \$21,900 NOW \$19,100

Prices based on straight sale, Tax & Tags extra. Trades accepted at actual cash value
Must present this ad at time of purchase for sale price.

1985 Ford F350, XL 6.9 diesel, Eby 12' cattle bed, A-1 condition
410-374-6931

Trailer Hitches
Brake Controllers
Pintle Hooks
and Much More!
• Free Catalog •
Free UPS/Credit Cards
Weaver Distributing
1-800-Weaver-D

MOTORS
New & Rebuilt
350, 366, 427, 454
6.2 Diesels
Rebuilt & Used
Will Install
Roll Back Service
(at cost)
717-762-6415

Bittner Boys, Inc.
Quality Chevy V8
Motors for Cars,
Trucks and Boats.
We Install And
Deliver.
35 Years Of
Experience
717/762-7940

E-TOWN DODGE

1992 Ford XLT
Dual Wheel
Pickup, 17K
(6) 9 More Coming
In 1993 Diesels
In Stock Club
Cab, Dual
Wheels &
Regular Cab,
5 Speed.

CALL
MILTON HESS
Certified Truck Specialist
717-367-6644
717-653-6667
Ellizabethtown, PA