

1982 INTERNATIONAL 1700 SERIES

9 Litre Diesel, 5 & 2 Speed Rear, 21,500 GVW, New 14' Knapheide Wood Floor Platform and New 10 Ton Harsh Hoist, and Removable 40" High Grain Sides
\$10,900



Hostetler Truck Bodies & Trailers
Rt. 322 Milroy, PA 17063
(717) 667-3921

FOR SALE: 10' welding body with tool boxes, 1940, GMC 6x6 truck, good engine and trans., back rear does not work, \$500; also 1940 IH truck, does not run, B.O. 215/683-3827.

Hewey 11X7X6 1/2 ALUMINUM CATTLE BODY in excellent condition. Best offer. 717-653-9579.

IHC Loadstar 1800 hay and grain truck, 22' bed, 4' removable sides, 8' cabover rack, 345-5 speed, \$5000; 410-357-4073 Baltimore Co. Call after 7PM or leave message.

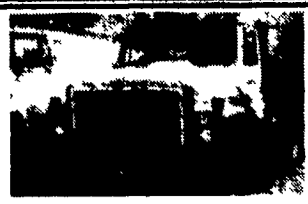
Int C/O, 1969, V-8, 5-speed, 2-speed rear, C&C, 1971 Int. V-8, 5-speed, 18' flatbed w/1500lb. hyd. lift gate. 717/875-3524.

WANTED: Chevy 454 truck engine and transmission. 301-475-2502 Evenings.

WANTED: Electric Lift Gate for Wide Body Pick-Up Truck. 717-872-5007.



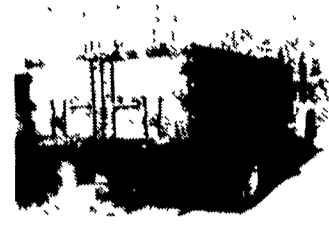
VAN BODIES Large Selection 11' to 24' Starting At \$300



1978 INTERNATIONAL SA, TT, 290 BC Cummins, RT910, RA57 Rear, 10.00 R 20 on Spokes, Very Low Mileage and Very Clean \$7,900



INTERNATIONAL, S Series Cabs, Air Brakes, Fits Most Models \$850



16' Metal Body With 40" Sides, Good Value At \$450



1986 IOWA MOLD TOOL CO. Hydraulic Swing Crane With Outriggers, 5000# Capacity \$2,500



(2) 1989 FORD E350, Econoline Vans, 460 V8, AT, PS, Dual Wheels, Good Condition \$7,900



1988 FORD F600 Cab & Chassis, 370, 5 Speed, 2 Speed, PS, 21,200 GVW, Good Value \$8,900



USED OIL TANKS, 2000, 2500, and 3000 Gallon Capacity, steel, Priced From \$500 to \$850



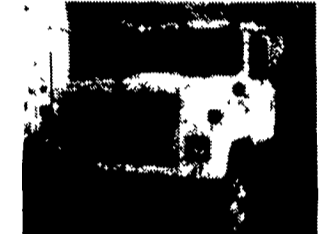
1985 FREIGHTLINER, TT, 300 Cummins, RT11609, DS381 Eaton in 3.70, PS, 22.5 Radials, Runs Well \$9,900



1979 INTERNATIONAL TT, 290 BC Cummins, 9 Speed, 38 Rears on 4 Spring, 22.5 Radials, PS, Lots of Miles Left \$5,900



1984 GMC 6000 Cab & Chassis, 8.2 Litre Detroit Diesel, 4 Speed, PS, 22,000 GVW, Very Low Miles \$5,750



1978 INTERNATIONAL 2575, TT, 318 Detroit, 13 Speed, 38 Rears, PS, 22.5 Radials, Good Runner \$5,500

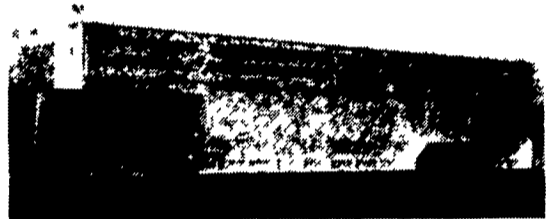
FIRESTONE MOTORS, INC.

330 S. THIRD ST. • LEMOYNE, PA 17043 • (717) 763-7721

S.D. TRAILER SALES

Leaders Of The Industry
Barrett Aluminum Stock Trailers

1993 Barrett
7 by 20 with Sliding Center Gate
List \$15,759
Our Price **\$9,500**



7 by 20 Shown
Steel Stock Trailers From \$2,700 and Up.

S.D. Trailer Sales
R.D. 2 Box 79A, Bedford, PA 15522
Phone 814-623-0311
One Mile North of The Turnpike Interchange
on Old Route 220

We've Now Moved To A Bigger & Better Location
Full Line Ford Cars,
Ford Trucks, Lincolns,
Mercurys, Jeeps, Eagles

YES!! ENGLE-RISSINGER AUTO GROUP DOES MAKE IT EASIER!!

- Over 300 New & Used Trucks, Vans & 4x4's
- 1991 E350 15 Passenger Van 7.3L Diesel, A/O/D, AC
- 1989 F250 4x2 XLT, 351, V8, Auto Trans, A/C, Heavy Hauler
- 1990 Chevy 3500 Cab & Chassis, DRW, 4x4, A/C, V8, 5 Spd
- 1988 Ranger XLT, Super Cab, 4x4, V6, A/C, 5 Spd
- 1989 Ford Conversion Vans, Quad Chassis w/Rear Seat Bed, I&R A/C & Heat, V8, AT, 3 to Choose
- 1987 F350 Crew Cab, XLT, AC, AT, Power Equipment
- 1990 F250 4x4 V8, AC, Auto Trans, Work Ready, 19,000 Miles
- 1989 Ranger XLT, AC, 5 Spd, 2.3L 30,000 Miles, Blue & Silver
- 1992 Ranger XLT, V6, A/O/D, AC, Fiberglass Cap, 13,000 Miles
- 1991 Ranger XLT, 4x4, 4.0L V6, A/O/D, AC
- 1991 F150 4x4 XLT, A/O/D, AC, 3.1 V6, 2 Tone
- 1992 Jeep Cherokee, AC, Laredo Pkg, A/O/D, Only 11,000 Miles
- 1991 Explorer, XLT, AC, A/O/D, 2 Tone, Power Equipment

ENGLE-RISSINGER AUTO GROUP
Rt 147 Just North of Halifax
Halifax, PA 17032
The Call's On Us 1-800-242-8075
1-717-896-3421

JONES BEST BUY USED CARS

JONES
PONTIAC • HONDA
GMC TRUCK
1335 Manheim Pike, Lancaster
394-0711

#8823 '92 PONTIAC GRAND AM 4 Dr., AT, AC, Fact. Warr. Orig. List \$14,657 NOW \$10,995	Choice of 2 '92 PONTIAC SUNBIRD 4 Dr., AT, Nicely Equipped Orig. List \$12,475 AS LOW AS \$8,650	#8856 '92 ACURA VIGOR GS 4 Dr., AT, Most Factory Power Options Was \$21,900 NOW \$19,900	#8824 '91 PONTIAC SUNBIRD LE 4 Dr., AT, Fact. Warr. Was \$9,500 NOW \$8,350
Choice of 2 '90 HONDA ACCORD LX 4 Dr., AT, or 5 Sp., Most Factory Power Options As Low As \$11,500	#8793 '90 FORD PROBE GL Coupe, AT, PS, AC, Stereo w/Cass., Fact. Warr. Was \$9,900 NOW \$7,995	#8864 '91 CHEVY CROSCICA LT 4 Dr., AT, PS, AC, Stereo, Fact. Warr. Was \$9,995 NOW \$8,950	#8854 '90 PONTIAC TRANSPORT AT, Most Factory Power Options, (File Photo) Was \$12,900 NOW \$11,500
#8867 '91 CHEVY CAMARO RS AT, Most Factory Power Options, Only 24,000 Mi. Was \$11,500 NOW \$9,995	#4935 '87 OLDS NINETY-EIGHT REGENCY AT, Most Factory Power Options SPECIAL \$6,995	#4972 '88 CHRYSLER NEW YORKER Mark Cross Edition, AT, Most Factory Power Options NOW \$7,995	#4975 '87 PONTIAC GRAND AM SE Coupe, 6 Cyl., AT, Most Factory Power Options Black SPECIAL \$5,500
#4953 '90 OLDS CUTLASS SUPREME SL, 4 Dr., AT, Most Factory Power Options SPECIAL \$7,500	#8850 '90 PONTIAC GRAND AM LE 4 Dr., AT, PS, AC, (File Photo) Was \$8,995 NOW \$7,850	#4912 '87 OLDS NINETY-EIGHT REGENCY AT, Most Factory Power Options SPECIAL \$6,995	#4995 '86 CHEVY CAMARO IROC Z-28 AT, Most Factory Power Options, T-Tops, Black Only 31,000 Was \$8,995 NOW \$7,995

Prices Based on Straight Sale. Tax & Tax Extra
This Ad Must Be Presented At Time Of Deal For Sale Price