

KEENS

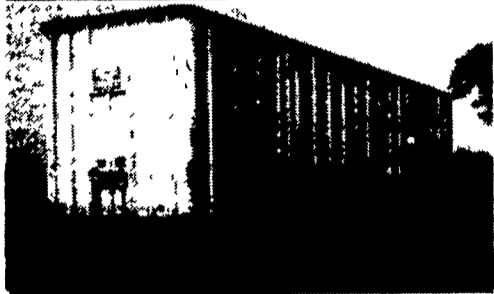
SERVICES INC.

Trailers

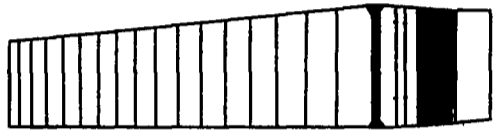
- Sales
 - Service
 - Rentals
 - New & Used Parts
- Lritz, PA
(717) 626-5420
"Since 1963"

1 Mile East Of The Lancaster Airport

Storage Trailers For Rent



Also Available For Rent



CONTAINER BOXES

(40' x 8')

Safe and Secure • Ground Level • Forklift Accessible • Cost Effective Storage

CALL US TODAY!

81 Int 2600 tdm axle, 22' flat dump, w/grain sides, 56 GVW, 80 Int. 1800, 20 ft flat, w/grain sides, 27 GVW; 78 Ford P600 step van, 15 GVW; 74 Ford 750 Cab/chassis 27GVW, 65 GMC 5000, 22 ft. van body, 27 GVW. (609)358-0831

'84 Ford truck LN8000 diesel, air bakes, air cond., power steering, 33,000 GVW, 24' Eby aluminum body with 9' deck over cab. Used as hay truck. Excellent condition. Contact Bob Pequinot (800)326-9744

'85 Chevy Sport Van, 12 passenger, 350 auto, PB, PS, AM-FM cassette, mechanically good, needs paint, \$2,900 717-733-2873

'87 Chevy C20 HD, 3/4 ton pickup, 350 FI, auto, PS, PB, air, AM-FM, dual tanks, 8,600 GVW, blue & white, \$7,400 717-733-2873

'87 Chevy C30 Silverado, 3+3, crew cab, 454 auto, PS, PB, PW, PDL, cruise, tilt, air, AM-FM, towing package, high rise fiberglass cap, 37,000 miles, like new 717-733-2873

'87 Chevy C20, HD w/new Reading utility body, 350 FI, auto, PB, PS, AM-FM, 8,600 GVW, 41,000 original miles, red, excellent condition, \$9,300 717-733-2873

'87 Ford XL F250, 4x4 w/8' stake body, 351 auto, PB, PS, AM-FM, dual tanks, 8,600 GVW, 41,000 miles, excellent condition, \$8,900 717-733-2873

'88 Chevy K30, 4x4, dually, 350 FI, auto, PB, PS, air, AM-FM, dual tanks, 10,000 GVW, 54,000 miles, 1 owner, \$10,900 717-733-2873

'88 Ford F250 XLT Lariat, super cab w/8' fully enclosed Knapheide utility body, 351 EFI, auto, PB, PS, PW, PDL, cruise, tilt, air, 8,800 GVW, blue & silver, excellent condition, \$11,900. 717-733-2873

'89 Chevy G20 Cargo Van, 305 FI, auto, PB, PS, air, AM-FM stereo, 6,600 GVW, 47,000 miles, new radials, 1 owner, maroon & silver, excellent condition, \$8,975. 717-733-2873

EBY USED EQUIPMENT SALE

POSSUM BELLY TRAILERS

- New Eby 1993
48"x102"x13'6" Cattle-Pot Jailhouse
1984 Chamberlain 47"x96"x13'2" Cattle-Hog Combo
1984 Barrett 46"x96"x13'6" Cattle Trailer Jailhouse
1983 Barrett 46"x96"x13'6" Cattle Trailer
1983 Wilson 45"x96"x13'4" Cattle/Hog Combo
1982 Wilson 45"x96"x13'2" Cattle Trailer
1982 Wilson 45"x96"x13'6" Cattle-Pot

STOCK TRAILERS

- 1989 Barrett 32"x102"x17' Featherlite 20'x7'x6'6"
1987 26' Eby Gooseneck
1986 Barrett 22'x7'x6'6"
1986 Featherlite 20'x7'x6'6"
1986 20'x8' Aluminum Walinga
1985 Moritz 20'x6'x6'10"
1985 Eby 45'x8'x6'8"
1983 Eby 18'x7'6"x6'6" Gooseneck

BODIES

NEW

- 1993 21'x6'6"x96" Double-Decker

Call For Special Pricing

- Omaha Steel Cattle/Grain Body, 14'x42" Sides
(3) 12' Eby Aluminum Cattle Body
17' Eby Cattle Body
21' Eby Aluminum-Double Deck
8 1/2' Eby Aluminum-Chicken Body
20' Fruhauf - Deck-Rail & Decking
12'x8' Reading Flatbed Body
12'x7' Steel Flatbed Body

M.H. Eby, Inc.

1194 Main Street (Route 23)
Blue Ball, PA 17506
(717) 354-4971 (800) 292-4752
FAX: (717) 355-2114
4435 State Route 29
West Jefferson, OH 43182
(614) 879-8001 (800) 752-0507
FAX: (614) 879-8004

- 1992 Ford Aerostar XL, Ext., 7 Pass., V6, AT, Loaded, Green, 62,800 Mi.....\$12,800
1991 Dodge Dynasty, 4 Cyl., AT, AC, CR, Tilt, AM-FM, Black, 71,800 Mi.....\$6,600
1990 Mitsubishi Eclipse 4 Cyl., AT, Loaded, Maroon, 64,700 Mi.....\$7,600
1989 Pontiac Grand Prix V6, 5 Spd., Loaded, Maroon/Gray, 60,400 Mi.....\$7,400
1989 Chevy Beretta GT, V6, 5 Spd. AC, CR, Tilt, AM-FM Cass., Black, 63,500 Mi.....\$6,800
1989 Ford Mustang GT, V8, 5 Spd., Loaded, Sunroof, Black, 59,900 Mi.....\$8,600
1989 Geo Spectrum 4 Dr., 4 Cyl., AT, AC, AM-FM Cass., Red, 65,500 Mi.....\$3,800
1988 Ford Aerostar XL 7 Pass., V6, AT, AC, CR, Tilt, AM-FM Cass., Blue/Silver, 49,000 Mi.....\$7,600
1988 VW Jetta GL 4 Cyl., 5 Spd., AC, CR, PW, Sunroof, AM-FM Cass., Black, 53,200 Mi.....\$6,800
1987 Chrysler Lebaron GTS Turbo, AT, Loaded, Black, 61,900 Mi.....\$4,900
1986 Ford Ranger V6, 5 Spd., AM, White, 63,700 Mi.....\$3,900

Brubaker's Auto Sales
Myerstown, PA
717-866-5237

Our 52nd Year
INTERNATIONAL TRUCKS

Sales • Service • Parts

IVECO
Parts, Service & Warranty

SALES - LEASING
STATE INSPECTION
ASE Certified Mechanical

CENTRAL GARAGE INC.

8. 2nd St., Womelsdorf, Pa. 19667

215-589-4581

REPAIRS - All Make Trucks And Cars

NEW TRUCKS

- 1993 International 4700.....25,500 GVW
1993 International 4900.....32,900 GVW
1993 Nissan UD 2600.....26,000 GVW
1993 Nissan UD 1800.....17,000 GVW
1992 Nissan UD 1300, 5 Speed.....13,000 GVW

USED TRUCKS

- 1977 International 1854.....30,000 GVW
1976 International Fleetstar, Automatic.....35,000 GVW
1978 International.....19,200 GVW
1988 International Model 1954.....32,800 GVW
1989 International Model 1954.....32,800 GVW
1985 Ford F350 w/Dump.....10,000 GVW
1984 Iveco.....14,800 GVW
1986 Iveco Z340.....18,900 GVW
1988 Iveco Z340.....18,900 GVW

PRE-OWNED CARS & TRUCKS

- 1991 Dodge Caravan - \$14,500 1986 Olds Firenza Sta. Wgn. - \$2,395
1979 Jeep - Mechanic's Special!

ASSORTED NEW AND USED TRUCK BODIES FOR SALE!

- Heavy Duty Winch •
- Grain Bodies, Stake Bodies & Van Bodies, 14 Ft. To 22 Ft.

EBY AGRI-DUMP BODIES

Rugged...built like a heavy dump truck



Eby Aluminum Agri-Dump Bodies pay off in dependable long-term service.

Their all-aluminum construction means:

- Greater payload efficiency
- Maintenance-free service
- Substantially higher resale value.

Eby's time-tested design is available in lengths to 24' for grain bodies and 10 1/2' for general purpose dump bodies. A long list of standard features such as tarp rail, built-in steps, aerodynamic uprights and Harsh hoist is complemented by a full range of custom options, including tailgates, Wahpeton tarps and grain chute.

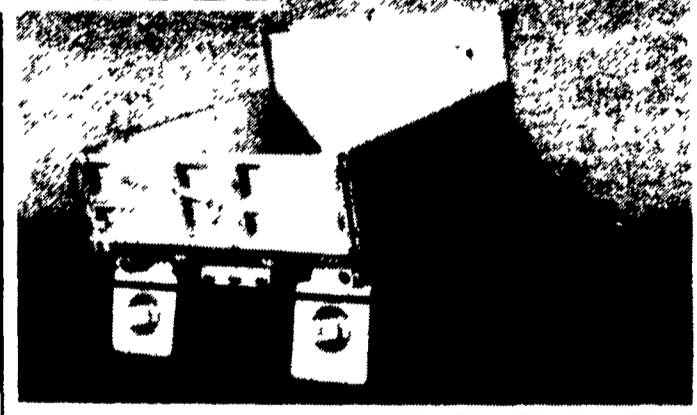
When you select your next grain body or general purpose dump body, consider the value that aluminum offers. It's a worry-free investment in your future.

CHECK OUT THESE FEATURES/BENEFITS

- Up to 40% lighter than steel, for greater payload
- Designed for long life
- Resale value
- Corrosion resistant, never needs painting
- Appearance to complement any truck
- Complete list of popular options, including tailgates, tarps and sides

STANDARD SPECIFICATIONS

- 6" heavy-duty extruded longitudinal sills
- 3" crossmembers on 12" centers on body lengths to 14'; 4" crossmembers on 12" centers on lengths over 14'
- 5"x1 1/4" extruded side posts, slanted for improved aerodynamics; 3"x2" heavy wall top rail
- .125" thick side sheets; .188" thick floor sheet (.250" thickness optional)
- Single acting tailgate with center flow chute, hinged top
- Rear ladder rung with step mounted on mud-flap bracket
- Includes mudflaps, aluminum splash shield, ICC-approved bumper and lights.



GRAIN BODIES

STANDARD LENGTHS: 12'; 14'; 15'; 16'; 17'; 18'; 20'; 22'; 24'

OVERALL WIDTHS: 96" standard, 102" optional

SIDE HEIGHTS: 48" standard, 54", 60" or 72" optional (other heights available on request)

GENERAL PURPOSE DUMP BODIES

—Ideal for landscaping work, construction, and hauling of loose aggregate or bulk commodities

STANDARD LENGTHS: 8'; 8 1/2'; 9'; 10'; 10 1/2'

OVERALL WIDTHS: 92" or 96" standard

SIDE HEIGHTS: 24" standard, 30" and 36" optional



M.H. Eby, Inc.

1194 Main Street (Route 23)
Blue Ball, PA 17506
(717) 354-4971 (800) 292-4752
FAX: (717) 355-2114

Call Kevin Seibert
Your Agri-Body Specialist

Committed to the Agri Transportation Business