

Public Auction Register

Closing Date Monday 5:00 P.M.
of each week's publication

SAT. JUN. 5 - 9AM, Real Estate, H.H. Goods, Antiques, Tools, Farmall H Tractors & 12'x14' Wooden Utility Shed. Located Along Milton Grove Rd., Mt. Joy, Pa. Mt. Joy & Manheim Rd. At Staufferstown Turn N. At Hollisier's Garage. Stanley Shearer Estate. Harold (Abe) Shaffner & Mark Diefenderfer, Aucts.

SAT. JUN. 5 - 9AM, Trucks, Vans, Large Amount New & Used Waco 6 1/2 Ft. Scaffolding, Large Amount Masonary Equipment- Mixers, Tampers, Saws, Etc. Located 7 Miles South Of Gettysburg, PA Or At North Edge Of Littlestown, Pa. Along Route 97 - Sale Sign Posted. Owner, Thomas Lawler. C. David Redding, Auct.

SAT. JUN. 5 - 9:30AM Salem Christian School Auction, Milford Park, Lehig Co., Rt. 100 Zionville. Homing Farm Agency, Inc.

SAT. JUN. 5 - 9:30AM Consignment Sale of Antique tractors, equipment, steam and gas engines, tools, parts and misc. At the Penns Cave grounds, Rt. 192 E. Centre Hall, Pa. To consign 814-692-8738, 237-3141. Nittany Antique Machinery Assn. Gilligan & Esh, aucts.

SAT. JUN. 5 - 10AM Valuable real estate, antiques, household goods, furniture, tools, self-propelled mower. 13 Queen Rd., Inter-

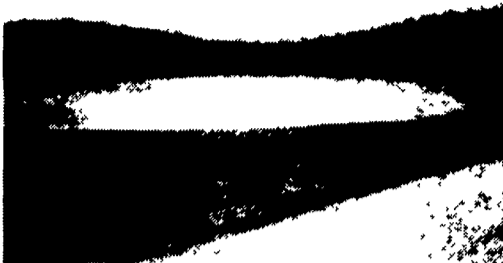
course, Leacock Twp., Pa. By Fannie Buckwalter. Miller & Siegrist, aucts.

SAT. JUN. 5 - 10AM Coins, jewelry, collectibles. Location: Brickerville Fire Co.

just off Rt. 322 West of Ephrata in the village of Brickerville, Pa. Lanc. Co. Terms by Alrene H. Minnich Estate. Aaron E. Martin, auct.

PUBLIC AUCTION OF

42 acres of land Tuesday, May 25, 1993 at 7 P.M.



Located along Bollinger Rd., West Nantmeal Twp., Chester County. From Elverson take Rt. 82 South turn right on Bollinger Rd., go approximately one mile to property on left.

PROPERTY CONSISTS OF: 42 acres of land, 1/2 wooded, 1/2 open land. Large 6 acre stocked lake. Terrain is sloping. One of the most beautiful home sites in rural Chester County.

INSPECTION: Saturday, May 8th from 1 - 4 P.M.

TERMS: 10% day of sale; settlement on or before July 15, 1993.

TERMS BY:
Ruth Houck
HORNING & MILLER AUCTION CO.
Affiliated with
Horning Farm Agency, Inc.
Alvin Horning, AU-0433-L
George Miller, IV
Main Street, Morgantown
(215) 286-5183

PUBLIC AUCTION Saturday, May 29, 1993 9 A.M.

Location: From Cresson go to Loretto turn right at Loretto watch for sale signs.

Listing: 806 IH diesel tractor wide front end and torque, 8100 Ford diesel tractor wide front end 2665 hrs., 3600 Ford diesel tractor wide front end and 2444 hrs., Ford Jubilee Back-Hoe w/loader and wide front end, 371 Bobcat skidsteer w/dirt bucket, fork bucket and blade, IH dump truck, J.D. 9 ft. transport disk, J.D. 112 chuck wagon box, Kilbros gravity wagon, IH gravity wagon, J.D. 4-14" trailer plows, IH 5-14" semi-mount plows, IH 3-14" quick hitch plows, 16 ft. transport harrow, (2) 8-10 ton hay wagon, 6 ton hay wagon, N.H. 275 baler w/thrower, 28 ft. elevator, Hesston PT 10 haybine, Ford hay rake, IH 56 2 row corn planter, Iron-age 2 row potato planter, 780 Allis-Chalmers 2 row wide row harvester w/pick up head, JD 1 row harvester w/ grass head, N.H. #7 forage wagon, N.H. 330 manure spreader, Star-line tank spreader, N.I. #7 one row corn picker, tractor chains 16.9x24, N.I. spreader for parts, Ford 3 pt. cultivator, 5 ft. utility blade.

Terms: Cash or Good Check. NO OUT OF STATE
Not Responsible for Accidents
Seller:
Patrick Lee
Phone 814-886-8914
Auctioneer: "Col" Brian W. Figard
AU-1855-L 814-766-2574
Food Served

PUBLIC AUCTION

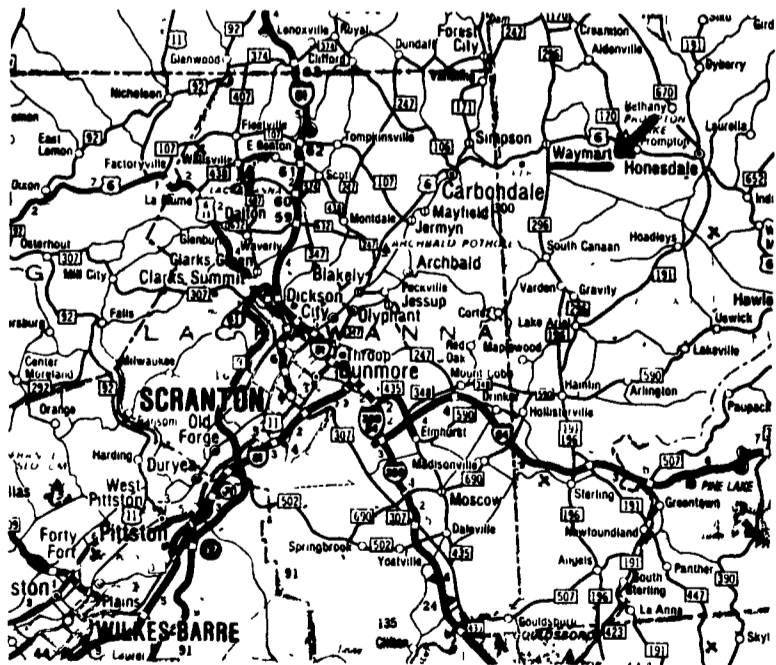
SATURDAY, MAY 22, 1993 STARTING 10:00 A.M.

Farm Real Estate May Be Seen By Appointment Only. Call Toll Free 1-800-582-9923. Located Off Rt. 6 On To Rt. 296 North 2.3 Miles. This is One Of The Nicest Farms In Wayne County. The Equipment is In Excellent Condition. The House is Top Condition, I, Am Sure You Will Love The Whole Package. For Appointment Call Toll Free 1-800-582-9923.

FARM MACHINERY INCLUDES: John Deere 4430 w/20 8-38 tires diesel tractor two Hyd. remotes, two PTO's 2598 original HRS. good rubber REAL NICE! Ford 5610 w/18 4-30 tires diesel tractor 1391 original HRS, good rubber, Farmall Super M w/12 4-38 tires w/8' belly mower good rubber real nice! 1956 F-900 Heavy Duty Ford dump truck 1000-20 tires NO RUST! Ready to Work! Antique Fordson steel wheel tractor 4 cylinder, John Deere 4400 gas combine w/282 chevy engine w/18 4-26 tires w/444 4 row corn head, New Holland 855 round baler like new!, 84 16' Valley Cattle trailer w/700-151 tires, New Holland 519 manure spreader BRAND NEW!, New Holland 32' skeleton elevator w/1 HP, motor 240 hookup, NH 9' 488 haybine & cylinder, NH 311 square baler w/belt thrower, NH 256 rolabar hay rake, steel kicker bale wagon on 10 ton NH running gear, JD 5 bottom 16" mold board plow w/side hill hitch, JD 210 14' transport disc, Bush hog 12' transport disc w/dual wheels, Ford 150 3 pt. hitch 3 bottom 16" mold board plow w/auto spring reset, JD 7000 plateless corn planter w/insecticide boxes & fertilizer auger, Century Crop spray w/40' boom 1 1/2 yrs. old, International Machinery Corp. model 1010 3 pt. hitch fertilizer spreader, NH 818 forage harvester w/1 row corn head, NI 310 1 row corn picker, model 200 Killbros gravity wagon on Knowles running gear, model 220 Flow-EZ gravity wagon on model 6872 Kory running gear, Portable 52' grain auger, NH 357 grinder mixer, Ford 3 pt. hitch post hole digger, 6' woods rotary mower 3 pt. hitch, 16' grooming drag, Pequea 520 feeder set up for 38 head, flat bed wagon on knowles running gear 700-15 tires, Small quantity of lumber (PINE). (7) 12' ft sections head gates, 550 gallon gas tank w/electric pump. Ford 555 TLB 1715 hrs., excellent shape, Gehl 6625 Bobcat heavy duty commercial w/bucket and round bale fork, Cat D6H bulldozer w/all 3 reserved.

60+ Hereford Feeder Cattle 60+

60+ head of heifer & steers. A real nice group of feeder cattle w/30 day T.B. and shipping fever shots. These cattle have been on grain since last November. Average weight between 400 - 600 lbs. Auctioneers Note: Machinery always kept inside under roof all in good shape. A real nice group of feeder cattle. Don't miss this sale!!!



BILL'S AUCTION SERVICE

WE ARE A FULL SERVICE COMPANY. CALL TOLL FREE 1-800-582-9923 (AU-3030-L)



VILSMEIHER ABSOLUTE auction

93C042

COMPLETE LIQUIDATION

CONSTRUCTION & EXCAVATING EQUIPMENT - 1988 HYSTER COMPACTOR, TRACK DRILL, COMPRESSORS, (2) 1989 FREIGHTLINER TRI AXLE DUMP TRUCKS, 1989 IHC FUEL TRUCK, TRUCK TRACTOR, 40 TON LOWBOY PICKUPS, 1991 ESTIMATING COMPUTER SYSTEM & CONTRACTORS TOOLS

TUESDAY, MAY 25 - 10:00 A.M.
READING, PA

D.B. Diefenderfer & Bro., Inc.

NOTICE: After 60 years in the construction and excavating business, D.B. Diefenderfer & Bro., Inc. has decided to liquidate and sell out completely. Everything in the sale belongs to D.B. Diefenderfer & Bro., Inc. and all items will absolutely sell to the highest bidder regardless of price.

LOCATION: The sale will be held at the D.B. Diefenderfer & Bro., Inc. office and yard facility, 117 Prospect Street, in Reading, PA.



HYDRAULIC EXCAVATORS

JOHN DEERE 890, s/n 890B006033T, ds'l., JOHN DEERE 790D, s/n CK790DL007721 (1988 - Purchased NEW 1989), ds'l.; JOHN DEERE 690B, s/n DW690BA502574 (1984), ds'l.; JOHN DEERE 690B, s/n DW690BA401822 (1981), ds'l.; GRADALL G660 Track Mt'd., s/n NP266802, ds'l.; INSLEY H1560C, s/n H7111C, ds'l., hyd. drive; INSLEY HC560, s/n H5474C, ds'l., chain drve.

CRAWLER LOADERS & TRACTORS

CAT 963 C. Loader s/n 21Z01016 (1987), ds'l.; CAT 963 C. Loader, s/n 11Z00321 (1984), ds'l.; CAT 953 C. Loader s/n 20Z01225 (1987), ds'l.; CAT 953 C. Loader, s/n 20Z01042 (1987), ds'l.; CAT 977L C. Loader, s/n 14X2009 (1980), ds'l.; CAT 955L C. Loader, s/n 13X2590 (1980), ds'l.; (2) CAT 955L C. Loader, s/n 85J10842 & 85J5332, ds'l.; CAT 955K C. Loader, s/n 61H546, ds'l.; CAT D811 C. Tractor, s/n 46A31289, ds'l.; (2) CAT D811 C. Tractor, s/n 46A27837 & 47A14300, ds'l.; CAT D5 C. Tractor, s/n 96J2327, ds'l.; CAT D4, s/n 7U33403, ds'l.

MOTOR SCRAPERS & GRADERS, PULL PANS & END DUMPS

TEREX TS14B Tandem, s/n S21265 (1988), (2) Det. ds'l.; CAT 613C Elevating, s/n 92X01003 (1986), ds'l.; CAT 621A, s/n 23H583, ds'l.; CAT 621A, s/n 23H561, ds'l.; CAT 621A, s/n 23H560, ds'l.; CAT 12 Grader, s/n 8T29795, ds'l. w/pony start; CAT 212 Grader, s/n 9T4913, ds'l. w/pony start; (2) CAT #435 & #60 Pull Pans, s/n 45D511 & 1D1481; (2) EUCLID R-10 IUD 10 Ton End Dumps, s/n IU18350 & IU12923, ds'l.

RUBBER TIRED LOADERS, TRACTOR LOADER BACKHOES

CAT 930 Art. R.T.L., s/n 41K2896, ds'l.; CAT 922 R.T.L., s/n 94A3263, ds'l.; MICHIGAN 75A R.T.L. s/n 9149, ds'l.; (3) FORD 555B T.L.B., s/n C766370 (1987), C760878 (1986), & C711650 (1983), ds'l.; (2) DYNAHOE 160 Series III T.L.B., s/n 40168F & 40084E (1980 & 1979), ds'l.; (3) DYNAHOE 160 T.L.B., s/n 22071E, 21611 & 21421, ds'l.

TRACK DRILL, AIR COMPRESSORS & TRENCHER

I-R ECM350 Track Drill, s/n 242860 (1985); I-R 750 cfm Port. Compr., s/n 158572 (1986), ds'l.; QUINCY 125 cfm Port. Compr., s/n 40217 (1984), ds'l.; CLEVELAND JS-36 Crawler Wheel Trencher, s/n 304994, ds'l.

1988 HYSTER COMPACTOR & ROLLERS

HYSTER C850B Art. Vib Compactor, s/n B188C1620J (1988), ds'l.; I-R SP-54 Art Vib Compactor, s/n 218, ds'l., PAC 2100E Pavemaster Tandem Roller, s/n 82372, gas

TRUCK TRACTOR & 40 TON LOWBOY

1983 FREIGHTLINER 12064 T/A Truck Tractor, ds'l., 10 spd., 1973 ROGERS 40 Ton T/A Detach. Lowboy, s/n 16425, w/pony motor & 20' level deck

1989 IHC FUEL TRUCK

1989 INTERNATIONAL 1700 1,800 gal., ds'l., 10 spd., w/2-compartment tank, meters, pumps & hose reels

(2) 1989 FREIGHTLINER TRI AXLE DUMP TRUCKS

(2) 1989 FREIGHTLINER 11264, ds'l., 10 spd., w/16' steel rock bodies, 44,000# rear

TANDEM & SINGLE AXLE DUMP TRUCKS

(2) 1979 INTERNATIONAL S2654 Tandem Axle, ds'l., 13 spd., 1974 INTERNATIONAL 2010 Tandem Axle, ds'l., 13 spd.; 1968 INTERNATIONAL 1900 Tandem Axle, (Bad Trans), 1970 CHEVY C60 Single Axle, (2) 1965 INTERNATIONAL 1890 Single Axle, (4) 1962 INTERNATIONAL 1800 Single Axle.

PLUS: SERVICE TRUCKS • PICKUPS • COMPRESSOR TRUCK • FUEL, WATER & FLATBED TRUCKS • STEP VANS • CHIPPER • BRUSH CUTTER ATTACHMENT • 1991 ESTIMATING COMPUTER SYSTEM • TRENCH & MANHOLE BOXES • PULL PANS • ATTACHMENTS • BUCKETS & TOOLS.

ABSOLUTE AUCTION - EVERYTHING SELLS AS-IS WHERE-IS TO THE HIGHEST BIDDER REGARDLESS OF PRICE. TERMS: COMPLETE PAYMENT SALE DAY IN CASH OR GUARANTEED FUNDS ONLY.

INSPECTION: One week prior to the sale date, from 8:00 a.m. to 4:30 p.m., and sale day starting at 7:30 a.m.

FINANCING: Servlease Corp. specializes in leasing all types of construction equipment and trucks for most industries. Bidders must be prequalified at least 5 days in advance. For complete leasing information, call James M. Maiorino (215) 538-1753; Glenn Burton (717) 346-7708, or 1-800-848-7624.

Site Phone: (215) 779-3440 (As of May 18th)

PA Auction Lic: RH-000021-L

VILSMEIHER AUCTION CO., INC.

1-800-BID-N-BUY
Rt. 309 Montgomeryville
Pa. 18936/215-899-5833