

**Delmarva  
Broiler-Fryer Market**  
Wednesday, May 12, 1993

Movement of ready-to-cook whole birds slowed, but remained fair to good and best on 3 pound and lighter sizes. Heavier weights were adequate to fully adequate. Live supplies were moderate; weights were desirable to heavy. Processing schedules continued very heavy. Less than trucklot asking prices were unchanged to 5 cents lower at 62 to 67 cents. Trade sentiment was no better than steady. Breast items were irregularly balanced; however, supplies were available and slow to clear. Leg items and wings were fully adequate to ample with wings held with the better confidence.

ESTIMATED SLAUGHTER OF BROILER/FRYERS IN DELMARVA (000)

ESTIMATED ACTUAL AVG. WEIGHT ACTUAL AVG. WEIGHT 05/12 05/10 05/10 05/05 05/03 2,331 2,355 4.85 2,362 4.83.

\*BROILER/FRYER CURRENT NEGOTIATED PRICES FOR IMMEDIATE DELIVERY INCLUDES MOSTLY MULTIPLE-DROP SHIPMENTS OF BRANDED AND WING TAGGED TO NEW YORK CITY FROM DELMARVA BRANDED U.S. GRADE A RANGE 53-75 WEIGHTED AVERAGE 62.97 NO. OF BOXES 9,710.

\*7 of 9 plants reporting.

**New York  
Egg Market**  
Wednesday, May 12, 1993

Prices were unchanged. The trade sentiment was about steady. Retail demand was fair to instances fairly good. Supplies were adequate.

PRICES TO RETAILERS, SALES TO VOLUME BUYERS, USDA GRADE A AND GRADE A, WHITE EGGS IN CARTONS, DELIVERED STORE DOOR, CENTS PER DOZEN.

RANGE EXTRA LARGE .67-.69, LARGE .64-.67, MEDIUM .60-.63.

**New York &  
Phila. Frozen Egg  
Report**  
May 7, 1993

The market tone was generally weak on yolks, steady on whole eggs, and fully steady to instances firm on whites. Trading activity was moderate with buyers selective and shopping around more than usual. Raw materials were irregularly available but generally at least adequate for further processors needs. Floor stocks were in good balance for current trade requirements.

WHOLESALE SELLING PRICES (CENTS PER POUND IN 30 LB. CONTAINERS) TRUCKLOTS LTL (MIN. 25 CONT.) RANGE MOSTLY RANGE WHOLE 48-51 49-50 52-58 BLEND (/) - -

61-70 WHITES 52-55 52-53 55-62 SUGARED YOLKS (MIN 43% SOLIDS) 54-58 55-56 59-68 SALTED YOLKS (MIN 43% SOLIDS) 50-54 51-52 55-64 (/) - WHOLE PLUS YOLK PLUS SWEETENER, GENERALLY 28-32% EGG SOLIDS.

**Eastern PA &  
NJ Poultry Report**  
Atlanta, Ga.

Tuesday, May 11, 1993

Early week pricing levels on light type fowl are trending close to unchanged but sales are too few to report on heavy hens. Offerings are irregularly available from area to area but overall noted about adequate to adequate for desired needs. Demand moderate. Trade sentiment generally steady.

CENTS PER LB., GENERALLY FOR SLAUGHTER THE FOLLOWING WEEK.  
HEAVY TYPE (7 POUNDS AND UP)  
\* AT FARM BUYER LOADING TOO FEW TO REPORT FOB PLANT TOO FEW TO REPORT LIGHT TYPE AT FARM BUYER LOADING 3-4 CENTS/LB. FOB PLANT TOO FEW TO REPORT.

\* WEIGHTS UNDER 7 LBS. SUBJECT TO DISCOUNT.

**National  
Grain Market**  
St. Joseph, Mo.

Wednesday, May 12, 1993

USDA DAILY NATIONAL GRAIN SUMMARY WEATHER AND HARD RED WINTER WHEAT HEADLINING GRAIN MARKETS. WHEAT SHARPLY HIGHER FOR THE MOST PART WITH MINNEAPOLIS UP 12 1/4 AND KANSAS CITY UP 15-18 CENTS. CORN 1 TO 4 CENTS HIGHER. SORGHUM 4 TO 7 CENTS HIGHER BUT SOYBEANS 3 TO 5 CENTS LOWER. AFTER A SERIES OF LOWER TRENDS WHEAT PRICES COMING BACK LIKE GANG BUSTERS THIS WEEK WITH HARD RED WINTER WHEAT GRABBING THE HEADLINES. SPOT CASH BASED ON JULY FUTURES HAVE JUMPED 20-25 BASIS POINTS AND FUTURES UP 4 CENTS THE FIRST THREE DAYS OF THIS WEEK. MAY DELIVERY TIME. LATE DEVELOPING AND HARVEST OF NEW CROP WHEAT. HARD RED WINTER WHEAT PRICES 10 CENTS BELOW SOFT WHEAT. AROUND 35 CENTS PRICE SPREAD BETWEEN OLD CROP AND NEW CROP FUTURES. NEW CROP WHEAT LOOKING GOOD BUT NEEDS SUNSHINE AND DRY WEATHER FOR HEADS TO FILL OUT, LOWER MOISTURE CONTENT FOR HARVESTING AND DRY FIELDS SO COMBINES CAN ROLL. SOME FIELDS IN OKLAHOMA, KANSAS, MISSOURI AND NEBRASKA FLOODED OUT. NEW CROP WHEAT PRODUCTION ESTIMATED AT 1.8 BILLION BUSHEL, UP 13 PERCENT FROM A YEAR AGO. PICKING UP FEW EXPORT ORDERS AT MIDWEEK AFTER SLOW START. CORN PLANTING ABOUT TWO WEEKS BEHIND NORMAL BUT MANY PLACES, ESPECIALLY WESTERN CORNBELT, NEED WEEK OF DRY WEATHER TO GET IN FIELDS. SCATTERED THUNDERSHOWERS CURRENTLY ROLLING ACROSS THE AREA. A LITTLE BETTER PROGRESS MADE IN EASTERN CORNBELT AND SOUTHEAST PLANTING BUT SCATTERED RAINS CONTINUE TO PLAGUE FARMERS. SORGHUM RIDING ON CORN COATTAILS AND POSTING SUBSTANTIAL PRICE GAINS BUT THIS COULD BE A SECOND CHOICE PLANTING COMMODITY. SOYBEAN PREDICTED CARRYOVER STOCKS MORE THAN SOME THOUGHT BUT 45 MILLION BUSHEL BELOW A YEAR AGO. SOUTH AMERICA PRODUCTION FIGURES BETTER THAN EARLIER ESTIMATES.

FUTURES CLOSE: KANSAS CITY (JULY) WHEAT 2.96 1/2 UP 3 3.63 3/4 MINNEAPOLIS (JULY) WHEAT 3.06 1/2 UP 4 1/4 3.79 CHICAGO (JULY) WHEAT 2.97 1/2 UP 4 3.62 3/4 (JULY) CORN 2.32 3/4 UP 3 3/4 2.61 (JULY) SOYBEANS 6.00 1/2 DN 4 6.19 1/2.  
EXPORT: BARGE OR RAIL, PORT OF NEW ORLEANS OR NORTH TEXAS GULF. NO. 1 HARD RED WINTER WHEAT ORDINARY PROTEIN 3.86 1/2 UP 18 4.07-4.09 NO. 2 SOFT RED WINTER WHEAT 3.97 1/2-4.13 UP 4-9 3.85-3.86 NO. 2 YELLOW CORN 2.54-2.55 ANS 6.23 1/2 DN 3-4 6.41-6.42 RF THIS REPORT A SERVICE OF U.S. DEPARTMENT OF AGRICULTURE, LIVESTOCK AND GRAIN MARKET NEWS, ST. JOSEPH, MO. PHIL MCFALL, IN CHARGE.

EXPORT NEWS: JAPAN BOUGHT A TOTAL OF 170,423 TONNES OF WHEAT INCLUDING 75,188 TONNES FROM THE U.S., THE BALANCE FROM CANADA AND AUSTRALIA FOR JULY DEL. YEMEN PURCHASED 700 TONNES OF U.S. WHEAT UNDER EEP FOR MAY SHIPMENT. U.S.D.A. WILL DONATE 106,000 TONNES OF FEED WHEAT TO ARMENIA. U.S.D.A. ACCEPTED A BID TO SELL 900 TONNES OF SUNOIL TO MEXICO UNDER THE SUNFLOWERSEED OIL ASSISTANCE PROGRAM FOR JUNE/JULY SHIPMENT.

DATE CHANGE YEAR AGO 5/12/93 5/11/93 5/13/92 WHEAT: KANSAS CITY 3.57-3.62 UP 15-18 3.82-3.84 MINNEAPOLIS TRUCK BID 3.76 1/2 UP 12 1/4 4.36 PORTLAND 3.50-3.53 NC-UP 1 4.42-4.44 ST. LOUIS 2.95-2.98 UP 4 3.55-3.60.

CORN, U.S. NO. 2 YELLOW: KANSAS CITY 2.30-2.32 UP 4 2.64-2.66 MINNEAPOLIS 2.23 3/4 UP 3/4 2.54 SO. IOWA 2.30-2.32 UP 3-2 2.58-2.61 1/2 OMAHA 2.20-2.21 UP 2 2.48.

SOYBEANS, NO. 1 YELLOW: KANSAS CITY 5.93-5.94 DN 4-5 6.21-6.23 MINNEAPOLIS 5.84 1/2 DN 5 6.10 1/2 SO. IOWA 5.94-5.99 DN 3 6.12-6.17 C. ILL. PROCESSORS 5.99 1/2-6.09 1/2 DN 4 6.17 1/2-6.29 1/2 KANSAS CITY, US NO. 1 HARD RED WINTER WHEAT, ORDINARY PROTEIN. MINNEAPOLIS, US NO. 1 DARK NORTHERN SPRING WHEAT, 14% PROTEIN. PORTLAND, NO. 1 SOFT WHITE WHEAT, ST. LOUIS, NO. 2 SOFT RED WINTER WHEAT.

FUTURES CLOSE: KANSAS CITY (JULY) WHEAT 2.96 1/2 UP 3 3.63 3/4 MINNEAPOLIS (JULY) WHEAT 3.06 1/2 UP 4 1/4 3.79 CHICAGO (JULY) WHEAT 2.97 1/2 UP 4 3.62 3/4 (JULY) CORN 2.32 3/4 UP 3 3/4 2.61 (JULY) SOYBEANS 6.00 1/2 DN 4 6.19 1/2.

EXPORT: BARGE OR RAIL, PORT OF NEW ORLEANS OR NORTH TEXAS GULF. NO. 1 HARD RED WINTER WHEAT ORDINARY PROTEIN 3.86 1/2 UP 18 4.07-4.09 NO. 2 SOFT RED WINTER WHEAT 3.97 1/2-4.13 UP 4-9 3.85-3.86 NO. 2 YELLOW CORN 2.54-2.55 ANS 6.23 1/2 DN 3-4 6.41-6.42 RF THIS REPORT A SERVICE OF U.S. DEPARTMENT OF AGRICULTURE, LIVESTOCK AND GRAIN MARKET NEWS, ST. JOSEPH, MO. PHIL MCFALL, IN CHARGE.

**Belleville Hay**

Wednesday, May 12  
Belleville, PA

Report Supplied by Auction  
30 LOADS OF HAY.  
ALFALFA: 65.00-82.50  
MIXED HAY: 50.00-90.00  
EAR CORN: 1 LOAD, 52.50.

**TOWN AND COUNTRY  
POURED WALLS**

- Manure Pits
- Retaining Walls
- House Basements
- Trench Silo Walls



(215) 593-5794  
Ask For Ike



- Market Hogs
- Sows • Boars
- Cull Pigs

NOW RECEIVING:  
Mon. 6:30-11 a.m.  
Fri. 6:30-10 a.m.

All market hogs received at receiving station must be scheduled one week in advance



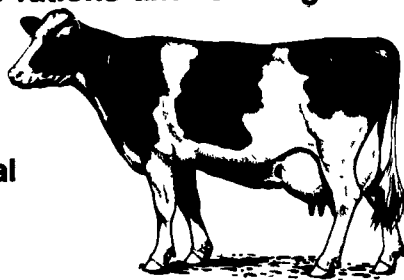
Rt. 897 - 1 mile North of Fivepointville  
(215) 445-5776 • FAX (215) 445-6099

Milking cows, dry cows, heifers, calves, and beef cattle throughout Pennsylvania, Maryland, and Canada are experiencing the benefits of White Oak's newest product...

**NUTRI-CATALYST**  
A Profitable Investment In The Future Of Your Herd

Nutri-Catalyst is a dietary ingredient that enhances the nutritional value of virtually all types of cattle rations and is designed

as a rumen modulator that improves fermentation and digestion. It increases the availability of protein, energy, minerals, and vitamins in practical forage and cereal grain diets.



FEED: 1 Ounce Per Head Per Day (TMR or Top Dress).

**Can Be Used With Any Feeding Program To:**

- Improve persistency of milk production
- Obtain higher peak milk yield
- Improve milk quality, protein and fat test
- Improve utilization of good and marginal quality forage
- Improve hoof health and immunity
- Re-establish intestinal microflora following digestive upsets



Quality People, Products & Service Working for YOU.

PA, MD Toll Free  
1-800-468-5524

Elizabethtown  
(717) 367-1525

Dealer Inquiries Invited

Pinola  
(717) 532-7845



100 West Jackson Street • Box 186 • New Holland, Pennsylvania 17557  
Office: (717) 355-7253 • FAX: (717) 355-9547

**HAY & GRAIN SALE EVERY MONDAY - 10:00 A.M.**

|       |        |  |           |
|-------|--------|--|-----------|
| TUES. | MAY 25 | QUILT, CRAFT & BUGGIES   | 9:00 A.M. |
| WED.  | MAY 26 | QUILT & CRAFT  | 9:00 A.M. |
| FRI.  | MAY 28 | PAUL'S WELDING SHOP, HELD AT 1248 GEORGETOWN RD. CHRISTIANA, PA. | 9:00 A.M. |

EQUIPPED FOR AN AUCTION AT YOUR PLACE OR OURS  
ALAN DIFFENBACH AUCT. - AU2258-L

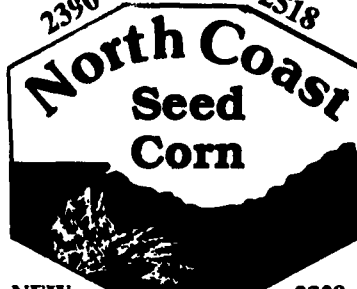
**BOYDELL FARMS**

302 Iona Rd., Lebanon, PA 17042  
Phone 717-272-8943

**DISTRIBUTORS FOR:**

SILO QUEEN

2390-2402-2517-2518



NEW 2525 BIRD FOOD 2329

CHEMICALS

**SOYBEANS**



3090 E Resnick - Pella NC 354-284-Shore

**ALFALFA**

84 VWAP VERNAL WETFOOT DISTRIBUTOR FOR GREAT PLAIN VARIETIES CIMARRON VR KEY BELMONT BLENDS

BALER TWINE \$18.95 Bale

FERTILIZER

WHOLESALE & RETAIL