

Lancaster Co. Livestock Market Auctions

Lancaster Livestock Auction

Lancaster, Pa.
Monday, May 10, 1993
Correction on Spring Lambs Quote
Cattle Calves Hogs Sheep Goats
Monday's Auction
1044 55 69 1083 581
Last Monday
:: ERR- INVALID COMMAND ;
Last Year
1274 47 144 1160 337

CATTLE: Slaughter steers uneven, average Choice to Prime fully steady, Select to average Choice steady to 50 lower, with some early sales 1.00 lower; slaughter heifers weak to 50 lower; cows fully steady; bullocks 50-1.00 lower; bulls steady, instances 1.00 lower. Supply included 61% slaughter steers, 11% slaughter heifers, 15% cows, with the balance bulls.

SLAUGHTER STEERS: High Choice and Prime 2-4 1200-1425 lb 80.25-82.85; few Choice and Prime 2-3 Choice 1200-1375 lb 82.00-84.25; Choice 2-3, few 4 1100-1550 lb 78.50-81.25, one lot mostly 3 1650 lb 76.75; Select and low Choice 2-3 1050-1450 lb 74.75-78.85; Select 2-3 1050-1250 lb 73.00-75.00.

HOLSTEINS: High Choice and Prime 2-3 1250-1450 lb 70.00-73.25, couple 74.00-74.75; Choice 2-3 1200-1500 lb 67.00-70.10; few Select 1-3 1200-1475 lb 60.50-65.00.

SLAUGHTER HEIFERS: Few mixed Choice and Prime 2-4 1100-1280 lb 79.00-79.85; Choice 2-3 950-1300 lb 74.50-78.50; Select 2-3 885-1125 lb 70.00-74.50.

COWS: LO DRESSING BULK HI DRESSING Breaking Utility & Commercial 2-3 51.00-53.50 53.50-55.00, 12 head 1500-2100 lb 57.00-62.00 Commercial 3-4 47.00-49.50 Cutter & Boning Utility 1-2 49.50-53.00 53.00-54.50 Canner and low Cutter 43.00-45.00 45.00-49.00.

BULLOCKS: Choice 2-3 950-1300 lb 66.00-69.50, few 69.50-70.25; Select 1-3 975-1300 lb 61.75-66.00.

BULLS: Yield grade 1 1250-2200 lb 62.00-67.50, several 67.50-70.25, eight head 72.00-76.75; Yield grade 2 1000-1600 lb 57.50-62.00.

CALVES: Vealers and slaughter calves steady. Demand good for Holstein bulls and heifers to return to farm.

VEALERS: Few high Good and low Choice 180-300 lb 85.00-100.00.

SLAUGHTER CALVES: Good and Choice 300-550 lb 70.00-90.00.

RETURNED TO FARM: Few 90-120 lb Holstein bulls 140.00-175.00; few 85-115 lb Holstein heifers 165.00-185.00

HOGS: Barrows and gilts not fully tested; sows fully steady, instances 1.00 higher on weights over 475 lb.

BARROWS AND GILTS: US 1-3 One lot 245 lb 42.25. US 2-3 One lot 255 lb 40.75.

SOWS: US 1-3 380-400 lb 33.00-35.00. 400-470 lb 37.50-39.25. 480-600 lb 40.00-42.75.

BOARS: Few All Weights 34.00-34.25.
SHEEP: Spring lambs steady 12-35.00

Vintage Livestock Auction

Paradise, Pa.
Tuesday, May 11, 1993
Cattle Calves Sheep Goats
Today
547 646 6 2
Last Tuesday
773 632 41 4
Last Year
868 708 15 4

CATTLE..USDA... Supply included

40% slaughter steers and 51% cows ...Compared with Monday's market: sl. steers .50 to 1.00 higher; sl. heifers not tested; cows fully steady; bulls and bullocks scarce. STEERS: few High Choice and Prime 2-4 1200/1350 lbs. 82.00-82.75, Choice and Prime 2-3 1080/1350 lbs. 81.00-83.50, six head 83.75-85.35, Choice 2-4 1075/1400 lbs. 79.75-81.85, Select and Low Choice 2-3 1050/1400 lbs. 76.75-80.00, few Select 203 1050/1325 lbs. 73.00-76.00. HOLSTEINS: Choice and Prime 2-3 1345/1690 lbs. 69.60-72.00, one lot Choice 2-3 1115 lbs. 69.00. COWS: Breaking Utility and Commercial 2-3 bulk 49.50-52.50, high dressing 53.00-55.50, Cutter and Boning Utility 1-2 bulk 48.00-52.00, high dressing 52.00-55.00, Canner and Low Cutter low dressing 42.00-45.50, bulk 46.00-49.75. BULLS: one Yield Grade No. 1 1860 lbs. 66.00, Yield Grade No. 2 1250/1600 lbs. 57.00-59.50.

CALVES...Vealers not tested, only 9 head sold for slaughter. Supply included 566 in graded sale. VEALERS: one Choice 315 lbs. 97.00, one Good 415 lbs. 72.00, few High Good and Low Choice 80/115 lbs. 45.00-50.00. RETURNED TO FARM: 25 head Holstein bulls 120/125 lbs. 174.00, 175 head 100/115 lbs. 180.00-188.00, and 65 head 80/95 lbs. 165.00-178.00 150 head small frame 80/115 lbs. 149.00-158.00. 10 head 115/120 lbs. Holstein heifers 218.00, 11 head 100/105 lbs. 267.00 and 35 head 80/95 lbs. 200.00-201.00, 20 head small frame 80/105 lbs. 190.00-217.00 and 15 head 70/75 lbs. 130.00-145.00.

SHEEP...Insufficient volume for a market test. Few Choice 45/50 lbs. Spring lambs 85.00-95.00.

lower; Woolled lambs 5.00-8.00 lower; slaughter ewes steady. Supply included 60% Spring lambs, 20% woolled lambs, with the balance slaughter ewes.

SPRING LAMBS: Choice 2-3 80-110 lb *85.00-93.00*, 60-80 lb 78.00-85.00, 40-55 lb 80.00-100.00.

WOOLED LAMBS: Choice 2-3 70-110 lb 60.00-68.00; few Good to low Choice 1-3 60-90 lb 50.00-55.00.

SLAUGHTER EWES: Utility and Good 22.00-35.00; Yearlings and two-year olds, 32.00-45.00.

GOATS: All goats sold by the head. Large 60.00-100.00, several Billies 110.00-160.00; few Thin 50.00-60.00. Medium 45.00-55.00; few Thin 35.00-45.00. Small, mainly kids, 30.00-40.00; few Thin 20.00-30.00.

Lancaster Livestock Auction

Wednesday's market report has been discontinued until further notice because of insubstantial receipts.

Eighty-Four Livestock

Eighty-Four, Pa.
Monday, May 10, 1993

Report Supplied by Auction

CATTLE 250. STEERS, SELECT 74.00-80.00; STANDARD 62.00-73.00; UTILITIES 60.50 AND DOWN.

HEIFERS: STANDARD 62.00-73.00; UTILITIES 60.00 AND DOWN.

COWS: UTILITY AND COMMERCIAL 48.50-55.50, 2 HEAD AT 60.00 EACH; CUTTERS, BONERS AND UTILITIES 44.00-49.00; CANNERS AND LOW CUTTERS 39.00-44.50; SHELLS 38.00 AND DOWN.

BULLS: #1 61.50-75.00; #2 53.00-63.50.

FEEDER STEERS: 200-300 LBS. 78.00-100.00; 300-500 LBS. 70.00-103.00; 500-800 LBS. 54.00-99.50.

HEIFERS: 200-300 LBS. 75.00-99.50; 300-500 LBS. 72.00-95.00; 500-800 LBS. 50.00-84.00.

BULLS: 200-300 LBS. 77.50-107.50; 300-500 LBS. 70.00-102.50; 500-800 LBS. 52.00-86.00.

CALVES: 165 HEAD. VEALERS CHOICE 90.00-118.00, GOOD 81.00-89.00; STANDARD AND GOOD 70.00-80.00; UTILITIES 62.00 AND DOWN.

FARM CALVES, HOLSTEIN BULLS #1 137.50-185.50; HOLSTEIN HEIFERS 102.50-182.50; HOLSTEIN BULLS #2 110.00-135.00; BEEF BULLS 95.00-200.00; BEEF HEIFERS 95.00-195.00.

HOGS: 93 HEAD. #1&2 150-200 LBS. 36.00-47.00; #1&2 220-260 LBS. 43.00-45.75.

SOWS: UNDER 500 LBS. 33.25-38.00; OVER 500 LBS. 34.25-35.25.

BOARS: 31.00-33.75.

FEEDER PIGS: 20-40 LBS. 20.00-36.00.

SHEEP AND LAMBS: 196 HEAD. HIGH CHOICE AND PRIME 25-50 LBS. 69.00-90.00; 50-75 LBS. 70.00-83.00; CHOICE 75-100 LBS. 69.00-75.00; FEEDER LAMBS GOOD AND CHOICE 68.00-76.00; UTILITIES 68.50 AND DOWN; EWES 19.50-27.75.

GOATS: 16 HEAD. LARGE 39.00-68.00; MEDIUM 29.00-40.00; SMALL 20.00-32.00.

New Holland Livestock Auction

Lancaster, Pa.
Thursday, May 13, 1993
Cattle Calves Sheep Goats
Today
1348 457 117 67
Last Thursday
1287 451 225 278
Last Year
1256 584 256 304

CATTLE: Slaughter steers steady to 50 higher; slaughter heifers scarce; cows fully steady; bullocks steady; bulls steady, although yield grade 1 not fully tested. Supply included 61% slaughter steers and 27% cows.

SLAUGHTER STEERS: Choice 2-3 few 4 1100-1425 lb 79.85-82.25; mixed Choice and Prime 2-4 1200-1375 lb 81.85-83.75; few Choice 2-3 1150-1325 lb 82.00-83.75, couple lots 1020-1040 lb 78.75-80.75; Select and low Choice 2-3 1050-1425 lb 77.00-80.00; few Select 1-3 1100-1325 lb 74.00-77.00.

HOLSTEINS: Choice 2-3 1200-1475 lb 69.00-71.00; few High Choice and Prime 2-3 1200-1550 lb 71.00-74.85; one lot Select and low Choice 2-3 1400 lb 67.85; Select 1-3 1060-1300 lb 66.00-67.75.

SLAUGHTER HEIFERS: Choice 2-3 1000-1260 lb 74.00-79.00, couple Choice 21150 1260 lb 79.25-80.00; few Select 2-3 930-1200 lb 72.00-74.50.

COWS: LOW DRESSING BULK HIGH DRESSING Breaking Utility & Commercial 2-3 52.00-54.75 few 55.00-58.00. Commercial 3-4 47.50-50.50. Cutter & Boning Utility 1-2 48.75-52.00 52.00-55.25. Canner and low Cutter 42.50-45.00 45.00-50.00.

BULLOCKS: Choice 2-3 1150-1450 lb 66.50-69.50; Select 1-3 1050-1350 lb 61.00-64.50.

BULLS: Yield grade 2 1100-1500 lb 58.75-61.75; few Yield grade 1 1450-2315 lb 63.00-67.50.

CALVES: Vealers steady firm to 5.00 higher. Bulk of supply sold to return to farm.

VEALERS: Few Choice 170-310 lb 108.00-120.00; few high Good and low Choice 215-375 lb 85.00-98.00, couple 470-495 lb 70.00-73.00, 80-110 lb 45.00-59.00.

RETURNED TO FARM: Bulk 90-125 lb Holstein Bulls 140.00-180.00, few 180.00-190.00; small frame 80-120 lb 115.00-145.00; few 90-115 lb Holstein Heifers 175.00-195.00, couple 202.00-222.00; small frame 85-110 lb 130.00-170.00.

SHEEP: Slaughter lambs and slaughter ewes steady. Supply included 60% Spring lambs, 15% Woolled Lambs, with the balance slaughter ewes.

SPRING LAMBS: Choice 60-90 lb 74.00-81.00, 35-60 lb 81.00-86.00, few 30-35 lb 90.00-97.00.

WOOLED LAMBS: Choice 2-3 60-100 lb 64.00-74.00.

SLAUGHTER EWES: Utility and Good 17.00-30.00; Yearlings and two-year olds 30.00-42.00.

GOATS: All goats sold by the head. Large 63.00-80.00, couple 120.00-135.00; Medium 36.00-52.00; Small, mainly kids, 17.00-36.00.

Lancaster County Weekly

Lancaster, Pa.
Friday, May 14, 1993
Cattle Calves
This Week
3200 1160
Last Week
3518 1154
Last Year
3607 1339

CATTLE: Slaughter steers 50 to mostly 1.00 higher; slaughter heifers weak to 50 lower; cows 50-1.00 higher; bullocks 50-1.00 lower; bulls steady, instances 1.00 lower. Supply included 52% slaughter steers, 6% slaughter heifers, 25% cows, 6% bulls, with the balance feeders.

SLAUGHTER STEERS: High Choice and Prime 2-4 1200-1425 lb 81.50-83.75; Choice and Prime 2-3 1080-1350 lb 81.75-84.25, couple 84.25-85.35; Choice 2-4 1100-1450 lb 79.75-82.25, few 1020-1050 lb 78.75-80.75; Select and low Choice 2-3 1050-1450 lb 75.50-80.00; few Select 2-3 1050-1325 lb 73.00-77.00.

HOLSTEINS: High Choice and Prime 2-3 1200-1690 lb 70.00-74.75; Choice 2-3 1200-1550 lb 67.00-71.00; Select 1-3 1060-1475 lb 63.00-67.75.

SLAUGHTER HEIFERS: Few mixed Choice and Prime 2-4 1100-1280 lb 79.00-79.85; Choice 2-3 950-1300 lb 74.00-79.00; Select 2-3 885-1200 lb 70.00-74.50.

COWS: LOW DRESSING BULK HIGH DRESSING Breaking Utility & Commercial 2-3 49.50-54.50 54.50-58.00. Commercial 3-4 47.00-50.50. Cutter & Boning Utility 1-2 47.00-50.00 50.00-54.00 54.00-55.25. Canner and low Cutter 42.50-45.00 45.00-50.00.

BULLOCKS: Choice 2-3 950-1300 lb 66.75-69.50, few 69.50-70.25; Select 1-3 975-1300 lb 61.00-66.00.

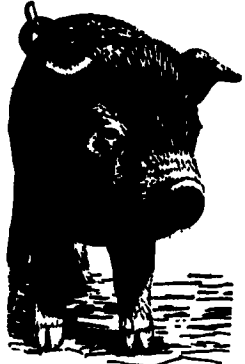
BULLS: Yield grade 1 1250-2315 lb 62.00-67.50, several 67.50-70.25, with eight head 72.00-76.75; yield grade 2 1000-1600 lb 57.50-62.00.

CALVES: Vealers steady to 5.00 higher, although bulk of supply sold to return to farm; slaughter calves steady.

VEALERS: Choice 170-310 lb 108.00-120.00; high Good and low Choice 180-375 lb 85.00-100.00, 80-110 lb 45.00-59.00.

SLAUGHTER CALVES: Good and Choice 300-550 lb 70.00-90.00.

RETURNED TO FARM: Bulk 90-125 lb Holstein bulls 150.00-190.00; small frame 80-120 lb 115.00-158.00; few 80-115 lb Holstein heifers 175.00-222.00, with one small lot 100-105 lb 267.00; small frame 80-105 lb 140.00-217.00, with few 70-75 lb 130.00-145.00.



LEBANON VALLEY LIVESTOCK MARKET, INC.

1 mile East of Fredericksburg along Rt. 22
PHONE
JONESTOWN
865-2881
Flea Market Auction every Tuesday at 12:30, Tools, Eggs, Produce, etc.
Buyers & Sellers Welcome

B&R CATTLE CO.
RD 1, Marietta, PA 17547
Office Phone: (717) 653-8164
Specializing in Stockers & Feeders
JOHN BOWMAN
Ph. (717) 653-5728
RON RANCK
Ph. (717) 656-9849

HAY, STRAW & CORN — SALE —
Please Note New Sale Time!
Starting Jan. 3
Sale Starts 10 AM
Every Friday At 10 AM

GREEN DRAGON MARKET & AUCTION
RD No. 4 Ephrata, Pa. 717-738-1117
1 mile North of Ephrata on N. State St.
Out of State Buyers - Cash or Certified Check Only

LANCASTER STOCK YARDS Open 24 hours a day
365 days a year
(717) 394-2611

AUCTIONS
MONDAY
9:00 A.M. - Slaughter Bulls, Heifers, Steers, Cows
10:00 A.M. - Goats, Veal Calves, Lambs
12:00 Noon - Slaughter Hogs
WEDNESDAY
8:00 A.M. - Slaughter Hogs
10:00 A.M. - Slaughter Bulls, Heifers, Steers, Cows
11:00 A.M. - Veal Calves, Lambs
11:00 A.M. - Steers, Bulls, Cows, Heifers
FRIDAY
11:00 A.M. - Stocker and Feeder Cattle
SATURDAY
8:00 A.M. - Slaughter Hogs
Next Feeder Cattle Sale
Friday, May 21 - 11:00 A.M.
No Hog Sale Sat., May 29th

LANCASTER STOCKYARDS, INC.
1147 Lititz Pike, Lancaster, PA 17601
Incorporated in 1895 - Serving The Community for 98 Years

VINTAGE SALES STABLES, INC.

SALE TUESDAYS
10:30 A.M. SLAUGHTER CATTLE AUCTION — STEERS, BULLS, HEIFERS, COWS, FEEDER CATTLE
7:30 P.M. CALVES, SHEEP, GOATS *GET CALVES IN EARLY — OUR STATE GRADER STARTS AT 1:00 P.M.

Selling Feeders Every Tuesday
At Approx. 2 PM

L. ROBERT FRAME, SR., PRESIDENT
GLENN S. FRAME, MGR.
BUS (717) 442-4181 BUS (717) 768-8204
HOME (215) 458-8518
IRWIN MARTIN, FIELD REP. (717) 733-7434
KENNETH E. HERSHEY, FIELD REP. (717) 442-4874



TRUCKING SERVICE
AVAIL-LOCAL & LONG DISTANCE
(RT. 30, 10 MILES EAST OF LANCASTER IN PARADISE, PA)