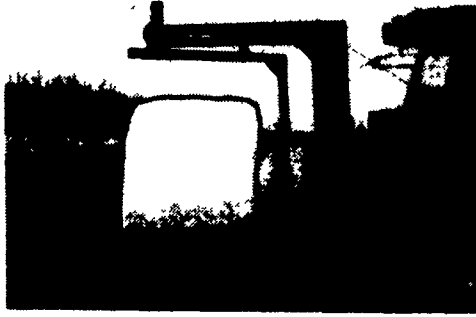




**NEW IDEA 702
UNI-SYSTEM**
GMC Diesel 110 HP, New Paint,
Runs Great
\$2,650 Or Best Offer
(717) 687-8724

**FARMLUND INC.
ROUND BALE WRAPPERS**

Christiana, PA 17509



A very simple well built 3 pt. hydraulic machine that will pick up heavy round bales, wrap them and set them where you want all for a price you can afford. A one man operation! Made in PA. Film wrap available.

Howard Cox
(410) 658-6319
(717) 940-4465

USED EQUIPMENT IN STOCK

TRACTORS

Case 1690 (L)
Massey Harris 101 JR.

SKID LOADERS

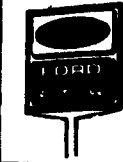
Bobcat 642B
NH 425
LAWN & GARDEN
Ferd YT 12.8
Simplicity 4211 Lawn Tractor
w/Mower
Cub Cadet 106
JD 111 w/bagger

BALERS & HAY TOOLS

NH 855 Round Baler
NH 275 Baler w/Thrower
NH 326 Baler w/Thrower
NH 1499 Haybine
NH 1495 Self-Propelled Hay-
bine (L)
NH 411 Discbine (L)
NH 488 Haybine (L)

SPREADERS

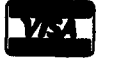
NH 513 Spreader
NH 519 Spreader
NI 384 w/Pan



NORMAN D. CLARK & SON

Honey Grove, PA 17035
717-734-3682

We Ship Parts Daily U.P.S.

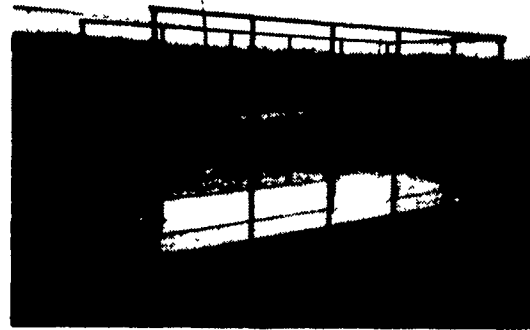


Located 14 Miles
South of Port Royal
on Rt. 75

2nd Location — Loysville, PA
717-789-3117
(L) indicates equipment at Loysville location.

DILLER EQUIPMENT

Call Anytime, Except Sunday
Call or Write For Free Literature **(717) 369-2691** **(800) 523-8002**
Chambersburg, PA 17201



**A WAGON BUILT TO LAST-
ASK OUR CUSTOMERS**

- All steel bed frame - scheduled #40 pipe side racks
- Sides easily removed - Side gates open under pressure
- Treated lumber flooring - screwed down
- Formed steel side rails - steel bumper
- Rear gate swings 270° either way
- Standard size: 8x16, 8x18, 8x20, 9x18, 9x20, 9x24
- Also just side racks available



DEALERS

- | | | |
|--|---|---|
| Binkley & Hurst
Llitz, PA
(717) 626-4705 | Chambersburg Farm Service
Chambersburg, PA
(800) 447-8830 | Snyder's
Watson, PA
(717) 536-5555 |
| Barndt Tractor Farm
Ottsville, PA
(215) 795-2281 | D.J. Implement
Dayton, VA
(703) 879-9926 | Charles S. Snyder
Tamaqua, PA
(717) 386-5945 |
| Harry L. Calabine, Jr.
Beavertown, PA
(717) 658-8007 | R & W Equipment
Carlisle, PA
(717) 243-2686 | Wineland Equipment
Martinsburg, PA
(814) 793-2109 |

Hotline The Better ELECTRIC FENCING

Quietly Professional **NOW IMPROVED** Better Lightning Resistance **Miles Of Shock**

- NEW LESS EXPENSIVE MODEL
- HIGH POWERED WALL MODELS
- 3 MODELS OPERATED FROM A RECHARGEABLE BATTERY
- 3 MODELS OPERATED FROM 110-120V PLUG IN
- COMPETITIVELY PRICED
- LOCAL SERVICE
- POWER OUTLET — OPENLINE 8500V
- TESTED TO 500 ohm LOAD (HEAVY LEAKAGE) OUTPUT STILL OVER 4800v
- ALL-WEATHER (NON-RUST) VERY STRONG POLYCARBONATE CASE
- COVERED BY GUARANTEE
- REPLACEABLE PRINTED CIRCUIT
- CONSTANT PULSE RATE
- OVER VOLTAGE INPUT PROTECTION
- NO MOVING PARTS (Solid State)

Over a QUARTER OF A CENTURY of manufacturing Electric Fencers

DEALER INQUIRIES INVITED

BUCK HILL FENCER SHOP

Benj. S. Miller
2019 Smyrna Rd., Paradise, PA 17562
Authorized Hotline Sales & Service Dealers

Samuel S. King, 501 Coopers Drive, Kirkwood, Pa. 17536
Stoltzfus Harness Shop, RD 4, Box 13, Honeybrook, PA 19344
Barlow Engine Repair, 11738 Weaver Rd., Orrstown, Pa. 17244
Black Rock Repair, 858 Pumping Station Rd., Kirkwood, Pa. 17536
White Horse Machine, 5566 Old Phila. Pike, Gap, Pa. 17527
Winter Rd Diesel Service, RD 1 Box 14, Loganton, Pa. 17747
Esh Farm Supply, 68 Clearview Rd., Ronks, Pa. 17572
Aaron K. Beiler, 135 Monterey Rd., Bird In Hand, Pa. 17505
Beiler's Repair, RD 2 Box 54, Watson, PA 17777
Valley Hardware, 958 Vintage Rd., Christiana, PA 17509
Beiler Engine Service, 280 Pennsy Rd., New Providence, PA 17560
Lancaster Lanterns, 323 E. White Oak Rd., Paradise, PA 17562
Elmsport Harness Shop, Rt. 1 Box 217, Allenwood, PA 17810
Jessie E. King, ICR 57A, Spring Glen, PA 17978

Sales, Service & Parts For
AGCO Allis, Kubota, Long, Belarus
New Idea, Hesston,
Bush Hog And Bandit Chippers

MARSHALL MACHINERY, INC.
Rt 652, Midway Between Indian Orchard and Beach Lake.
Honesdale, PA 18431 **(717) 729-7117**

WE SHIP PARTS DAILY BY UPS.
Hours: 8-5 Mon.-Sat.

PARTIAL LISTING

TRACTORS

AC: 7010 w/Cab, PS; 6080 w/Cab; 6080 w/ROPS & Sunroof; 6060; 5040 w/Ldr.; 200 Cab; 190XT Diesel; 185 Diesel; 180 Diesel; 170G; D12; D10 w/Woods L159 Mower.
BOLENS: 224 4WD Tractor w/Ldr.
DEUTZ: 7085 w/Cab 2WD; DX90 4WD.
CASE: 385 Utility Tractor w/Hyd. Drive Sickle Bar Mower.
FORD: 6700; 5000 w/Ldr.; 4000 w/Ldr.; 3000 w/Ldr. IHC: 140 w/ Cultivator; Super H. JD: 3020 w/Side Console. MASSEY: 135 w/Ldr. KUBOTA: M8950DT 4WD w/Cab; 2850 w/Ldr.
HI CLEARANCE: Ford 2000; Farnall Super A.

HAY AND FORAGE

RAKES: NH 254 Tedder Rake; NH 56, 256 & 258 Side Rakes; JD 660 w/Dolly Wheels. NI Rakes; Fahr Four Star Centepede Tedders; New Deutz Fahr KS2.60 Dual Rotary Rake w/Hyd. Fold For Easy Transport- 19 1/2 Ft. Working Width; Vicon 3 Pt. Tedder Rake. NI 406 9 1/2 Ft. w/Dolly Wheels; NH 162 4 Star Tedder.
HAYBINES: NEW IDEA: 270, 272 Cut/Ditioners.
NH: 469, 472, 477, 489. HESSTON: 1070, 1071, 1090, 1014 Hyd. Swing.
BALERS: NI: 483, 484 Round Baler, Demo; NH: 269, 273 w/ Kicker, 320.
FORAGE HARVESTORS: HESSTON: 2000-100, 2000-150, 7020 w/Your Choice Of Heads, 7140.
LARGE SELECTION OF PICK UP AND CORN HEADS - CALL FOR YOUR NEEDS.
GRINDERS/MIXERS: Bearcat 1250A; Gehl 65MX; Artsway 425A; Gehl 100 Hyd. Drive w/Scale; NH 353 Mixer Mill.
CHOPPERS: NH S717 w/IR Corn Head. **FORAGE BLOWERS:** NI: 620, 622. GEHL Blower w/Re-Cutter; 1580 Blower; NH 28 Whirl-A-Feed Blower.
10'x24' Tandem Axle Hyd. Dumping Round Bale Hauling Trailer.
WHITE TOP HARVESTOR SILO, 20x32 w/Unloader, Torn Down Ready To Load, Delivery Available.
Bale King Bale Rack & Running Gear

TILLAGE EQUIPMENT

Tandem Discs: IHC: 350 Smoothing 14 Ft.; 37 Smoothing 14 Ft. WHITE: 13 Ft. BUSH HOG: 12 Ft.; 14 Ft. Plowing; 13 Ft. Smoothing. MASSEY FERGUSON: 10 Ft. Leveling; 12 Ft. Smoothing. KEWANEE: 800 Super Flex 14 Ft.; 13 Ft. Rock Flex. JD: RWA 13 Ft. Smoothing; BWA 12 Ft. Smoothing.
OFFSET PLOWING DISCS:
BUSH HOG: 12 Ft. Reconditioned; 9 1/2 Ft. Heavy Duty. MILLER: 11 Ft. 3 Bar; 14 Ft. KEWANEE: 12 Ft. Demo. ATHENS: 11 Ft. Tandem.
PLOWS:
JD 3 PTH Chisel Plows; JD 2600 Auto Reset; IHC: On-Land Hitch 710 6X; 720 8X; 735 Variable 5X. 7-14 Shank 3 Pt. Chisel Plows. WHITE: 548 5X Spring Reset Semi Mt.
BRILLION: 16 Ft. And 18 Ft. (Danish Tine) Spring Tooth Harrows.

INDUSTRIAL

TRACTOR/LOADER/BACKHOES: Case 480, 580. AC 715C. York Grader (Towable). Kubota L4150 w/Cab 200 Hrs. ARPS 728 3 pth Backhoe.
DOZERS: JD 450C w/6 Way Blade; AC 653 w/6 Way Blade; AC H3; Case 450 Crawler w/4&1 Bucket.
LOADERS: AC 640; AC 615; Massey 2135; JD 440B Log Skidder; Pettibone B66 4WD Forklift; Ford Lane Paver Model A-2; AC 600 Forklift; AC 345 Payloader w/Log Fork And Bucket.
SKID STEERS: NH L775; NH L553; JD 375.

SPECIAL
JD 7000 4 Row Narrow Planter,
Dry Fertilizer, Nice
Call For Price!

TINKERER'S ROW: AC D15; AC B; AC 175; Ferguson 20; Farnall H; Lond 610 4WD w/Front End Ldr.; JD 3020 WFE; Haybuster No-Till Drill; AC D15 3 Pt. Cultivator & Side Dresser.

PLANTING EQUIPMENT

JD 8250 Disc Grain Drill, Like New; AC 2-4-6- Row Corn Planter; JD 2 Row 3 PTH Corn Planter; Int. 258 Trailer Corn Planter; Lilliston No-Till Seeder; Brillion 21 Ft. Ex-Fold Cultipacker-Like New; Brillion 10 Ft. Cultimulcher; JD 2 Row Tool Bar Corn Planter 3 Pt.; Cole Powell Multiplex Planters.

MISCELLANEOUS EQUIPMENT

SPRAYERS: Myers 100 Gal. 3 Pth. JD 535 Trailer Sprayer. Assorted Trailer And 3 Pth. Sprayers. BCI 300 Gal. Sprayer Tank On Trailer Century 300 Gal. Sprayer On Trailer. FMC 3 Pt. Sprayer Hard; Air Blast Sprayer.
FEEDER WAGONS: Knoedler Feeder Wagon; Knoedler Dial-A-Mix Wagon; E-Z Flow 220 w/Grain Wagon; Kilbros 250 Grain Wagon.
TMR MIXER WAGON: Schwartz.
Pronovost Tandem Dump Trailer, 48 Ft. Move All Tandem Axle Hyd. Equipment Trailer; York Heavy Duty Pull Type Road Rake; Case/IH 8610 Bale Processor; Hesston #10 Stack Hand And #10 Stack Processor; Westfield 8x51 Ft. Grain Auger; Shaver 3 Pth. Post Pounder; JD 30 2 Row Potato Digger; JD 2 Row Potato Planter; MC 3 Pth. Lawn Genie Pick Up Mower; Jobber Rock Windrower; Vermeer Trencher; Agri-Metal Bedding Chopper; A&W 250 Hp. Dynamometer. Used Cab For 190 Or 200. **LARGE SUPPLY OF FRONT END LOADERS AND CABS FOR VARIOUS MAKES OF TRACTORS;** Belsh Dual Axle Trailer.

MANURE EQUIPMENT

LIQUID: 3000 Gal. VanDale Vacuum Pressure Liquid Spreader For Truck Mounting; Hawkbit 3220 Gal.; Hedlund Martin 2900 Gal. And 2400 Gal.; Betterbilt 1500 Gal.; Clay Honey Wagon-Vacuum; Leftover Wic 2100 Gal Tandem Axle Liquid Spreader. Discount Price
New Ford NH 306 Side Slinger Manure Spreader, Tandem Axle; NI 3632 Tandem Spreader- Sharp; Knight 716 Side Spreader
Several NI And NH Box Spreader, Various Sizes. **BARREL SPREADERS:** NH 668.