

sml-med 5.00-7.00 mostly 5.00-6.00 fr cond 3.00-4.00 med fr appear 3.00-4.00 Yellow Straightneck sml-med 8.00 fr cond 4.00-6.00 med 5.00-6.00 GA Zucchini med 5.00-5.50 Yellow Straightneck sml-med fr appear 5.00-6.00 med 5.00-6.00.

---SWRET POTATOES: MARKET STEADY CURED 40 lb ctns NC U.S. One Jewels med 8.00-8.50 ---TOMATOES: MARKET SLIGHTLY LOWER 25 lb ctns FL U.S. Comb or Better pink to light red xlge 20.00-22.00 mostly 20.00 red 18.00 fr qual 18.00 lge 18.00 few 20.00 fr qual 16.00 Local Repack 85% U.S. One or Better xlge 26.50 lge 24.50 med 20.50 10 lb ctns PA Vine Ripes Greenhouse xlge 13.50-14.00 lge 12.00 7 kg flts BL Vine Ripes lge 20.00 NL Vine Ripes lge 20.00 ---TOMATOES, CHERRY: OFFERINGS LIGHT flts 12 1-pt bkts MX 11.00-12.00 ---TOMATOES, PLUM TYPE: OFFERINGS LIGHT 25 lb ctns FL light red to red 14.00-15.00 ---TURNIPS: OFFERINGS INSUFFICIENT TO QUOTE ---VEGETABLES OTHER: MARKET ABOUT STEADY 3 kg ctns GU Radicchio 10.00 IT Radicchio 11.00.

Leinbach's Shippensburg Produce Auction

(717)532-5511
Shippensburg, PA
Average Prices Of #1 Produce
May 6, 8, and 11
Open 10 a.m. Tues., Thurs. & Sat.
Report Supplied by Auction
APPLES: 1.50-3.50 1/2 BU.
ASPARAGUS: 8.00-11.00 12 LBS.
POTATOES: 3.00-4.00 50 LB. #1, 2.50-3.50 UNCLASSIFIED; 2.50-3.00 1/2 BU. #1.
SMALL POTTED PLANTS: ALL VARIETIES .25-1.50 EACH.
GERANIUMS: SMALL TO MEDIUM POTS .35-1.50.

MIXED SMALL TO LARGE PLANTERS: 2.50-8.00.
HANGING BASKETS: MIXED VARIETY 3.50-7.50 EACH.
AZALEAS: MEDIUM 2.50-5.50 EACH.
BEDDING PLANT FLOWERS: ALL VARIETIES 4.00-12.00 FLAT.
VEGETABLE PLANTS: ALL VARIETIES 3.50-7.50 FLAT.
RHODODENDRONS: SMALL TO LARGE 16.50-14.00 EACH.
SHRUBS: ARBORVITAE 5.00-12.00, MISC. SPRUCE SMALL TO LARGE 7.00-12.00 EACH; YEW 4.00-9.00 EACH; JUNIPERS 1.75-3.50 EACH.
SHRUBS: BURING BUSH, HOLLY 2.00-8.00 EACH.
FLOWERING TREES: JAPANESE RED MAPLE, DOGWOOD, CHERRY SMALL TO LARGE 6.00-16.00 EACH.
JAPONICA: 4.00-7.50 EACH.
SMALL HARDY MUMS: 1.75-4.00 EACH.
POTATO AND TOMATO PLANTS: .50-1.50 EACH.
POTTING SOIL: 1.50-4.00 BAG.
CHRISTMAS TREE SEEDLINGS: 2.50-30.00 PER HUNDRED.
GREENHOUSE TOMATOES: 8.75-9.50 10 LB. BOX.

Philadelphia Potato & Onion

Philadelphia, Pa.
Wednesday, May 12, 1993
ONIONS AND POTATOES
---ONIONS DRY: MARKET ABOUT STEADY US#1 OR GENERALLY GOOD QUAL AND COND UNLESS OTHERWISE STATED. NEW CROP Yellow Granex GA 50 lb sbs jbo few 26.00 med 20.00 50 lb ctns med 22.00-23.00 25 lb sbs jbo few 14.00 med few 12.00 mstr ctnr 10 5-lb mshaks med 24.00 mctr ctnr 5

10-lb mshaks jbo 28.00 Grano CA 50 lb sbs col fr cond 16.00-18.00 jbo 20.00 oec 21.00 fair qual 18.00 TX 50 lb sbs col 22.00-25.00 jbo 20.00 few 22.00 rpk sz 15.00 50 lb ctns jbo 23.00-25.00 White MX 50 lb sbs jbo fr cond 16.00-18.00 Red CA 25 lb sbs med 8.00-9.00 few 10.00 MX 25 lb sbs jbo 11.00-13.00 mostly 12.00 TX 25 lb sbs med 8.00-9.00 few 10.00 ---POTATOES: MARKET ABOUT STEADY US#1 SZ A WASHED OR BRUSHED UNLESS OTHERWISE STATED NEW CROP Round Red AZ 50 lb ctns 15.00-16.00 50 lb sbs sz B 18.00-20.00 CA 50 lb ctns 14.00-15.00 few 12.00 sz B 20.00-21.00 FL 50 lb sbs few 16.00 fair qual 7.50-8.50 sz B 18.00 Long White CA 50 lb ctns 13.00-14.00 50 lb sbs sz B 11.00-12.00 OLD CROP Russet Burbank ID bld 10 5-lb flmbgs non sz A 8.00-8.50 50 lb ctns 70s 15.00-17.00 mostly 16.00-16.50 80s 15.50-17.50 mostly 16.00-17.00 fair cond 14.50 90s 12.00-14.00 mostly 12.00-12.50 some 11.00 100s 9.00-11.00 mostly 9.50-10.50 few 11.50 Frontiers CD Prince Edward Island CDOne 50 lb ctns 70s 10.00-10.50 80s 10.00-10.50 90s 9.00 100s 8.00 Norkotah CD Prince Edward Island CDOne 50 lb ctns 70s 10.00 80s 10.00 90s 9.00 100s 7.50-8.00 WA 50 lb ctns 70s 10.00-10.50 80s 10.00-10.50 90s 9.00 100s 8.00 WI 50 lb ctns 70s 11.50-12.00 80s 11.50-12.00 90s 9.00 Round White CD Prince Edward Island 50 lb sbs 4.50-5.00 lge 5.50-6.00 mostly 6.00 MB 50 lb sbs 4.00-4.25 NY 50 lb sbs 5.25-5.50 lge 6.50.

Southern Maryland Regional Farmers' Market

P.O. Box 144, Cheltenham, Md. 20623
May 7, 1993
ANNUALS: 5-6" POTS 3.50 FLAT.
ANNUALS: 3.50-8.50 FLAT.

VEGETABLE PLANTS: 3.00-8.00 FLAT.
BEDDING AND POTTED PLANTS: 1.50-13.00.
HANGING BASKETS: 10" 5.50.

Leola Produce Auction

Leola, PA
May 11, 1993
Report Supplied by Auction
ASPARAGUS: .80-1.20 12 OZ. BUNCH, .80-1.10 PER LB. LOOSE.
ONIONS: 12.00-17.00 35-40 CT. BUNCH.
POTATOES: 1.75-2.25 50 LBS.
RADISHES: 12.00-16.00 40 CT. BUNCH.
RHUBARB: 5.50-9.00 15 LBS.
SPINACH: 5.00-14.00 1 1/9 BU.
TOMATOES: HOTHOUSE 14.00-15.00 10 LBS #1, 35.00-44.00 25 LB. HOTHOUSE.
SHRUBBERY: AZALEAS 4.75-5.75; ARBORVITAE, PYRAMID AND GLOBE TYPE 5.00-11.00; BOXWOOD 12.00-14.00; BIRD'S NEST SPRUCE AND ALBERTA SPRUCE 9.00-12.00; BURNING BUSH 5.00-6.00; FLOWERING TREES 12.00-14.00; NORWAY MAPLES 14.00-16.00 EACH; RHODODENDRON MIXED COLORS 6.00-9.00; UPRIGHT AND SPREADING YEW 4.00-5.50; WHITE PINE 5.75-6.50 EACH.
BEDDING PLANTS: ASSORTED VARIETY OF FLOWERS 6.50-9.50 FLAT; PANSIES 3.50-5.75 FLAT; DAHLIAS AND GERANIUMS 13.00-16.00 12-15 CT.; GERANIUMS POTTED,

3.25-4.25 EACH; GLOXINIA 2.75-3.75 EACH; ASSORTED HERBS AND PERENNIALS 10.50-15.00 FLAT; VINCA 8.00-11.75 FLAT; WINDOW BOXES 6.00-7.50 EACH; ASSORTED HANGING BASKETS 4.50-7.50 EACH; PHLOX 5.50-7.50 FLAT; SWEET WILLIAM 5.25-7.50 12-14 CT..
VEGETABLE PLANTS: PATIO TOMATO PLANTS .65-.95 EACH; TOMATOES, PEPPERS, EGGPLANT 5.00-9.50 FLAT; BROCCOLI, CABBAGE, CAULIFLOWER 3.50-5.50 FLAT; CUCUMBERS, ZUCCHINI, WATERMELON AND CANTALOUPE 4.00-8.00 FLAT; SNAP AND LIMA BEANS 3.25-4.50 FLAT.

BARK MULCH: 1.50-1.60 2 1/2 CU. FT. BAG.
NEXT WEEK'S SALE DAYS MONDAY, TUESDAY, AND FRIDAY, 10 A.M.

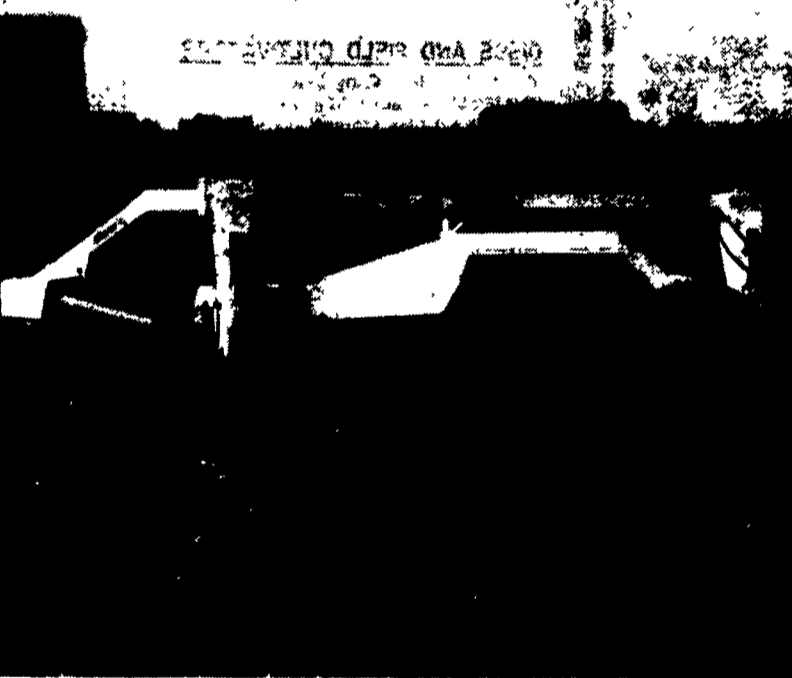
North Jersey Livestock

Hackettstown, NJ
Tuesday, May 11, 1993
Report supplied by auction
CALVES 33-2.05.
COWS .36%-.56% .
EASY COWS .06-.44% .
HEIFERS .34-.80.
BULLS .51-.74.
STEERS .54%-.85.
HOGS .28-.38% .
ROASTING PIGS EACH 15.00-67.00.
SOWS .36.
SHEEP .20-.55.
LAMBS EACH 15.00-64.00.
LAMBS PER LB. .31-1.08.
GOATS EACH 20.00-145.00.
KIDS EACH 16.00-77.00.
TOTAL 1246.

See Your White-New Idea Dealer Listed Below.

- | | |
|--|---|
| New Jersey
Bridgeton
Leslie G. Fogg Inc.
Columbus
Reed Brothers
Equipment
Shiloh
Farm Rite Inc. | Mercer
Ralph W Kyle Inc.
Oakland Mills
Peoples Sales &
Service Inc.
Quakertown
C. J. Wonsidler Bros.
Quarryville
A.L. Herr & Brother
Somerset
Lincoln Supply &
Equipment Co.
Tunkhannock
Ace Jurista Inc. |
| Pennsylvania
Airville
Farmers Equip. &
Supply Co. Inc.
Bechtelsville
Miller Equip. Co.
Bethel
Zimmerman Farm
Service
Bloomsburg
William F. Welliver
Chambersburg
Chambersburg Farm
Service Inc.
Cochranville
Stoltzfus Farm
Service Inc.
Dover
George N Gross Inc.
Everett
Sollenbergers
Equipment Inc.
Gettysburg
Yingling's
Implement Inc.
Honesdale
Marshall Machinery
Klingerstown
Stanleys Farm
Service
Lebanon
Umbergers Of
Fontana
Mahaffey
Hutton Farm
Equipment | |

*Cuts more than hay.
Cuts time.*

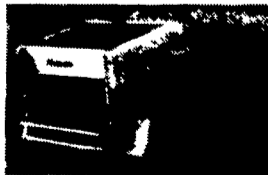


New Idea 5212 Disc Mower Conditioners cut a big 11'9" swath and condition with 96" intermeshing rolls. It's a wider version of our well-known 5209. With it, you cut and condition lots of hay...every trip. And that means you cut time.

Because the New Idea modular disc cutterbar design makes routine maintenance simple and, although unlikely,

repairs a breeze; there's less downtime, too.

Best of all, you'll find our disc mower conditioners are just one segment of our hay equipment line. Others include round balers, disc mowers, Model 484 with optional bale slicer sickle mowers and mower conditioners, rakes and hay handling equipment.



Free Twine with every Baler Purchased

NEW IDEA
BY WHITE-NEW IDEA

CHORE-TIME

POULTRY PARTS IN STOCK

See Us For Your Parts And Repair Needs.



- Augers
- PVC Tubing
- Boots
- Hopper Switches
- Bins
- Fill Pipe
- Fill Elbows
- MOTORS**
Direct Drive
Belt Drive

We Ship UPS

Check Our Warehouse Prices 24 Hour Service

Swine & Poultry Systems Specialists
FARMER BOY AG.
410 E. LINCOLN AVE. MYERSTOWN, PA 17067

Hours: Mon.-Fri. 7:00 to 5:00; Saturday 7:30 to 11:30

PH 717-866-7565

MEAT MATTERS MOST



HOME BRED lambs like these have been winning for me and my buyers in the Mid-Atlantic area. They LOOK GOOD. They HANDLE GOOD. They CUT GOOD.

1993 Models Arriving Now!

1993 Crop Looks Better Than Ever... Yearly Ewes, Ewe Lambs And Wether Lambs Available For Selecting Now!

Contact me for meaty rams, and club lambs

Robert Dinsmore

5842 Broad Run Rd. Jefferson, MD 21755

1-800-331-9122

Evenings 301-371-4483

HAMPSHIRE SHROPSHIRE CLUB LAMBS