

Top Pennsylvania DHIA Herds By County For April

(Continued from Page D4)

JOE MC COY	27.9	14517	605	4.2	485	3.3
WARREN THOMAS	34.1	14506	552	3.8	457	3.1
HAROLD V RIDDLE	39.3	11469	543	4.7	416	3.6
ELAINE H KIDMILLER	11.4	2090	69	3.3	61	2.9

JOHN H SCOTT	81.0	18780	690	3.7	607	3.2
POLLY HOLLOW FM INC	103.8	19626	700	3.6	606	3.1
BEDNARSKI FARMS	69.8	19504	717	3.7	606	3.1

WYOMING

DA VUE HOLSTEINS	43.6	24771	911	3.7	798	3.2
WAYNE-ROGER SHERWOOD	64.9	23018	868	3.8	749	3.3
RICHARD PLACE	62.1	20593	791	3.8	672	3.3
R + W KUZMA FARM	53.9	20543	745	3.6	649	3.2
ROGER S WILLIAMS	62.2	18653	779	4.2	644	3.5
INSINGA HOLSTEINS	72.0	18850	677	3.6	629	3.3
TOM SANDS	59.8	19732	733	3.7	623	3.2
SHUPPS FARM	51.4	18793	730	3.9	621	3.3
JOHN CHRIST	33.7	18978	780	4.1	618	3.3
ARROWHEAD FARM	28.7	18303	676	3.7	591	3.2
DOOLITTLE HILL FARMS	64.7	18468	680	3.7	587	3.2
WILLYE HOLSTEINS	59.7	17837	643	3.6	578	3.2
TWOGETHER FARM	55.2	17029	633	3.7	564	3.3
JOHN + PAH ATKINSON	43.7	17882	625	3.5	550	3.1
BROWN FARM ENTERPRIS	55.3	16746	630	3.8	537	3.2

WAYNE

JAMES SLOCUM	23.3	21666	819	3.8	721	3.3
KEVIN BURLICH	44.4	21462	815	3.8	710	3.3
GARY FIELDING	38.1	22597	813	3.6	709	3.1
RICHFIELD FARMS	84.4	22688	761	3.4	703	3.1
RONALD J HAYESKI	24.5	20473	606	3.0	675	3.3
HIGHLAND FARMS	68.8	20759	742	3.6	657	3.2
SUNRISE+AVE FARM	44.8	19562	746	3.8	651	3.3
ALLAN SCHWABENBERG	60.8	19661	735	3.7	649	3.3
AL WAR FARM	39.0	19841	745	3.8	641	3.2
TRI J HOLSTEINS	53.0	19664	698	3.5	630	3.2
CARL SHEPSTONE	63.5	19473	710	3.6	629	3.2
ROWE BROS	95.2	19930	871	4.4	629	3.2
DALE WOROBY	40.7	18199	722	4.0	626	3.4
GARY+JEAN EISENHauer	33.7	19864	658	3.3	624	3.1

WARREN

FOGGY MEADOWS FARM	67.0	23717	817	3.4	745	3.1
MAPLE PLACE FARM	50.0	22138	821	3.7	694	3.1
TWIN STATES FARM INC	222.2	21502	776	3.6	670	3.1
FLOYD BRADSLY	42.1	21087	811	3.8	656	3.1
DOUG+DIANE HASTINGS	32.1	20754	792	3.8	655	3.2
BRUCE & SUZIE LINDELL	84.1	20579	761	3.7	654	3.2
RONALD HUNTER	21.6	21070	734	3.5	646	3.1
DENNIS LINDELL	64.2	20494	709	3.5	643	3.1
JEFF LINDELL	78.6	20583	742	3.6	642	3.1
GLA DON FARMS	51.5	19987	710	3.6	629	3.1
HAZELTINE VALLY FARM	46.5	19536	699	3.6	622	3.2
PINESHADE DAIRY	27.0	19532	743	3.8	618	3.2
RAYMOND LANSOW	121.2	20159	671	3.3	617	3.1
BARRY VAN ORD	37.1	19549	707	3.6	614	3.1
MARK LANSOW	33.0	19312	613	3.2	613	3.2

WASHINGTON

RANKIN FARM	19.6	25838	933	3.6	843	3.3
HAMILTON BROS	110.7	22514	791	3.5	710	3.2
CAPEN BROS	95.3	21477	739	3.4	684	3.2
RANKIN FARM	35.4	17864	878	4.9	676	3.8
MORGAN GLO FARM	55.8	20620	715	3.5	661	3.2
OBRIEN FARM	40.1	21228	719	3.4	657	3.1
HILLERVALE FARM	61.1	21187	807	3.8	651	3.1
TURNER FARMS INC	28.6	20552	888	4.3	649	3.2
JOHN & J E MARCHESIAK	85.0	20236	754	3.7	630	3.1
CO-HILL FARMS	54.4	19530	750	3.8	629	3.2
W KENN & W REX SMITH	51.8	19106	727	3.8	616	3.2
AIRYHURST FARM	48.0	19239	750	3.9	614	3.2

WESTMORELAND

HARRY R MARKER	74.5	23076	801	3.5	745	3.2
ADAM S & JANICE DEER	74.0	22251	809	3.6	705	3.2
JAMES E MC QUALDE	63.5	21542	872	4.0	689	3.2
CATALINA DAIRY	159.7	21592	791	3.7	683	3.2
JOHN & ROBERT GRAHAM	53.5	21161	728	3.4	664	3.1
OVERLEA FARMS	122.6	19819	674	3.4	648	3.3
WILLIAM BUTTERNORE	43.8	21039	710	3.4	646	3.1
KEITH C WALTERS	47.7	21025	819	3.9	644	3.1
KATHY&SALVIN VANCE JR	27.1	19742	773	3.9	640	3.2
RICHARD G STONER	55.7	19681	674	3.4	621	3.2
JAMES D RUGH	67.9	18457	675	3.7	604	3.3
ROBERT N FINK JR	42.3	18988	705	3.7	602	3.2
BILL & RICK EBERT	69.6	18520	714	3.9	593	3.2
WARYANKA BROTHERS	51.0	18479	737	4.0	576	3.1
ROSTRAVER DAIRY FARM	31.2	18496	579	3.1	565	3.1

YORK

SHYSERS RICHLAWN FMS	76.3	25513	869	3.4	789	3.1
BLUE KNOLL FARMS	90.4	24519	775	3.2	788	3.2
LYNN WOLF	86.0	24441	774	3.2	784	3.2
THOMAS A BOYER	41.2	23219	849	3.7	747	3.2
BESHORE FARMS	44.1	23539	895	3.8	743	3.2
LEONARD GREEK	46.9	22598	842	3.7	724	3.2
R R & N R STEWART	61.6	23544	674	2.9	719	3.1
RAMSEY S COOPER JR	73.3	23586	854	3.6	715	3.0
WALK LE HOLSTEINS	79.6	22907	740	3.2	713	3.1
FURNACE CREEK FARM	136.0	22562	787	3.5	713	3.2
SINKING SPRING PRINC	63.0	22766	835	3.7	705	3.1
RUTTERS	41.0	21953	858	3.9	699	3.2
MELVIN R LEHR	56.8	22369	755	3.4	692	3.1
EDWIN L CALHOUN	57.3	21689	833	3.8	691	3.2
DALE E RANCK	47.8	21164	760	3.6	677	3.2

AGRICULTURE'S LEADING EDGE
FFA

LOVE THEM WITH MILK

DAIRY - HEIFER/BEEF - STORAGE, HORSE BARN
Built By
KING CONSTRUCTION CO.

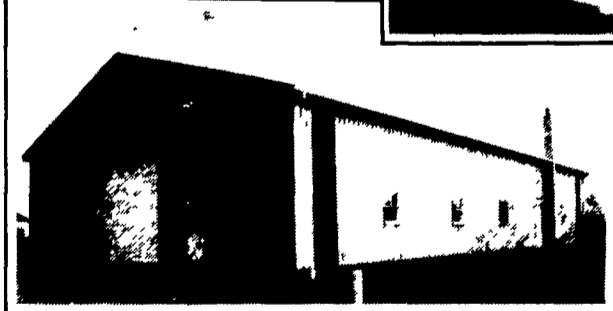


Free Stall Barn & Milking Parlor With Slatted Floors And Cow Mattresses

Heifer & Beef Barn Featuring Ventilated Curtains



Pole Building For Machinery Storage



Restored And New Horse Barns



AUTHORIZED DEALER FOR:

■ KEYSTONE WAFFLE SLATS

■ COW MATTRESSES - Heavy Nylon/Poloyester, Rubber Tire Filling

KING CONSTRUCTION CO.

601 Overly Grove Rd., New Holland, PA 17557 (717) 354-4740

STIR DRYING SAVES MONEY

Design III Stir-Ator Is Engineered To Do Just That — Save Money



A Design III Stir-Ator turns any drying bin into a self contained drying system. Get the drying capacity of a large continuous flow system at less cost—with storage as a bonus. A Stir-Ator gives you wet holding, drying, and storage, all in the same drying bin. It also loosens, mixes, and circulates grain so it dries faster. Save money this harvest season with a Design III Stir-Ator from DMC.

For further information, contact:

DMC



automatic farm systems

508 Evergreen Rd. Lebanon, PA 17042 (717) 274-5333