

Greencastle Livestock

Greencastle, Pa.
May 10, 1993

SLAUGHTER CATTLE RECEIPTS: 520 HEAD. 184 SLAUGHTER STEERS. TREND STEADY TO STRONGER. HIGH CHOICE AND PRIME 2-4, 81.50-86.00; CHOICE 2-3 950-1075 LBS. 74.00-79.50; CHOICE 2-3 1075-1375 LBS. 75.00-81.25; CHOICE 2-3 OVER 1375 LBS. 72.00-80.00; CHOICE 4 ALL WEIGHTS 70.00-74.00; SELECT & CHOICE 1-2 950-1100 LBS. 68.00-76.00; SELECT & CHOICE 1-2 1100-1375 LBS. 66.00-74.00; SELECT & CHOICE 1-2 OVER 1375 LBS. 64.00-73.00. HOLSTEINS: CHOICE 2-3 1050-1450 LBS. 66.50-72.75; SELECT 1-2 1050-1450 LBS. 61.00-66.00. SLAUGHTER HEIFERS: 79 HD. TREND: STEADY TO STRONGER. CHOICE 2-3 850-1000 LBS. 69.00-79.00; CHOICE 2-3 1000-1250 LBS. 73.50-84.00; SELECT & CHOICE 1-2 850-1000 LBS. 67.00-76.00; SELECT & CHOICE 1-2 1000-1250 LBS. 66.00-72.75. SELECT AND CHOICE 1-2, 1000-1250 LBS. 66.00-74.00. HOLSTEINS: CHOICE 2-3 1000-1350 LBS. 64.50-69.75; SELECT & CHOICE 1-2 1000-1350 LBS. 57.00-64.00. SLAUGHTER BULLS: 40 HD. TREND: STEADY. YIELD GRADE 1 ALL WEIGHTS 64.00-74.75; YIELD GRADE 2 ALL WEIGHTS 57.00-63.00. BULLOCKS: 8 HEAD. CHOICE 1-3 950-1150 LBS., 63.00-67.00; CHOICE 1-3 1150-1375 LBS. 65.00-68.00; SELECT 1-2 950-1250 LBS. 67.00-74.00. COWS: 209 HD. TREND: STEADY TO STRONGER. BREAKING UTILITY &

COMMERCIAL 47.00-52.50; CUTTER & BONING UTILITY 48.00-55.75; CANNER & LOW CUTTER 47.50 & DOWN. STOCKER & FEEDER CATTLE RECEIPTS: 1140 HD., TREND: 5.00-10.00 HIGHER. BEEF TYPES: 200-400 LBS. STEERS 85.00-118.00, BULLS 85.00-109.00, HEIFERS 80.00-104.00; 400-600 LBS. STEERS 80.00-109.00, BULLS 75.00-98.00, HEIFERS 80.00-97.00; 600-800 LBS. STEERS 75.00-93.00, BULLS 70.00-80.00; HEIFERS 70.00-80.00; 800-975 LBS. STEERS 70.00-79.00, BULLS 60.00-69.00; HEIFERS, 66.00-76.00. HOLSTEIN AND DAIRY CROSS: 200-400 LB. STEERS 75.00-90.00, BULLS 75.00-85.00, HEIFERS 80.00-120.00; 400-600 LB. STEERS 75.00-87.00, BULLS 65.00-72.00, HEIFERS 75.00-84.00; 600-800 LB. STEERS 70.00-79.00, BULLS 58.00-64.00, HEIFERS 70.00-75.00; 800-975 LB. STEERS 60.00-66.00, BULLS 52.00-60.00, HEIFERS 60.00-66.00. CALVES: 431 HD. VEAL CALVES. TREND: STRONGER. CHOICE 150-300 LBS. 90.00-120.00; GOOD 150-300 LBS. 80.00-105.00; GOOD 100-150 LBS. 70.00-90.00; GOOD 80-100 LBS. 60.00-80.00; STANDARD 80-100 LBS. 50.00-70.00; STANDARD 80 LBS. & DOWN 50.00 AND DOWN. CALVES RETURNING TO THE FARM: TREND: STRONGER. HOLSTEIN BULLS OVER 100 LBS. UP TO 207.00; UNDER 100 LBS. UP TO 195.00; HOLSTEIN HEIFERS OVER 100 LBS. UP TO 205.00; UNDER 100 LBS. UP TO 195.00; BEEF TYPE BULLS OVER 90 LBS. UP TO 202.50; BEEF TYPE HEIFERS OVER 90 LBS. 170.00. SHEEP & LAMBS: 209 HD. LAMBS:

TREND: STEADY; CHOICE 80-100 LBS. 74.00-84.00; 100-120 LBS. 70.00-80.00; 120 AND OVER, 60.00-69.00; MEDIUM AND GOOD, ALL WEIGHTS, 60.00-70.00; LIGHT LAMBS 80.00-105.00. SHEEP: EWES LEAN 20.00-30.00; EWES FAT 18.00-26.00; YEARLINGS 31.00-42.00; BUCKS 16.00-24.00. GOATS: 101 HD., SMALL 12.00-29.00; MEDIUM 30.00-60.00; LARGE 61.00-140.00. HOGS, SOWS & BOARS: 184 HD. TREND: 1.00 HIGHER. HOGS, BAR-

ROWS & GILTS: 210-250 LBS. 42.00-44.00; 250-260 LBS. 41.00-42.50; 260-270 LBS. 40.00-41.00; 270-300 LBS. 36.00-39.00. LIGHT HOGS: 140-180 LBS. 31.00-34.00; 180-210 LBS. 35.00-39.00. SOWS: TREND: 1.00 LOWER. GOOD SOWS UNDER 400 LBS. 32.00-35.50; GOOD SOWS OVER 400 LBS. 35.50-41.00; CULL SOWS ALL WEIGHTS 30.00 & DOWN. BOARS: TREND: STEADY. 180-210

LBS. 32.00-33.00; 210-260 LBS. 33.00-35.00; 260-300 LBS. 33.00-34.00; 300 LBS. & OVER 30.00-32.25. SALE EVERY MONDAY AT 2:00 P.M. & EVERY THURSDAY AT 1:00 P.M. HAY & STRAW SALE EVERY MONDAY & THURSDAY AT 11:30 A.M. SPECIAL FEEDER CATTLE SALE: FRIDAY, JUNE 4, 1993, AT 7:15 P.M. SPECIAL FEEDER PIG SALE: SATURDAY, MAY 22, AT 1:00 P.M.

KEYSTONE CONCRETE PRODUCTS INC.

477 East Farmersville Rd.
New Holland, PA 17557

"WAFFLE SLAT"

Syrri Con Corporation



SLATTED FREE STALL BARN

Slatted Beef Barn



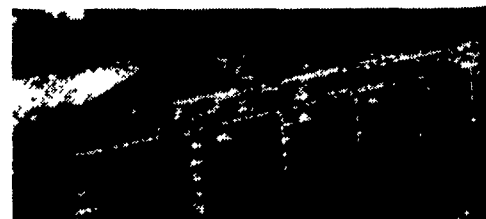
Slatted Heifer Barn



Slatted Hog Barn



Bunker Silos



Precast Concrete Bunker Silos. Available In T-Wall Or A-Frame Panels

Other Products:

- H&J Bunks • Hog & Cattle Slats
- Concrete Hog Penning • Concrete Post & Beam • Bunker Silo

Give us a call for more information on hog, beef, dairy and heifer barns

FPPF Polar Power

Keeps Your Diesel Running In The Worst Winter Cold!

Fuel filters, separators do nothing to keep diesel fuel from the waxing or gelling that blocks up and clogs fuel lines and filters. FPPF Polar Power contains FPPF's Fuel Power and FPPF's Polarized Diesel Fuel Flow Improver, the industry's leaders. It will keep your diesel running in the worst winter cold: lowering the pour-point, totally dispersing water, eliminating gum/varnish...outperforming all other additives and at lower cost.

For further information, write/call:

MILLER DIESEL INC.
DIESEL FUEL INJECTION & TURBO CHARGER SPECIALIST
6030 Jonestown Rd., Harrisburg, Pa. 17112
717-545-5931 Interstate 81 Exit 26



NORSE Fransgård

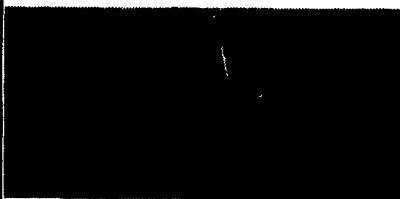
AUTO-WRAP 600



- ★ Linkage mounted and suitable for any tractor of 45 H.P. or more
- ★ Weight 1,200 lbs.
- ★ Powered by the tractor's own hydraulics, and operated by the levers mounted on the tractor.
- ★ Required hydraulics: Minimum 4 G.P.M.
- ★ No electrical supply needed.
- ★ Wraps bales up to 5'x5'
- ★ Max. bale weight 2,500 lbs.
- ★ Capacity approx. 25 bales per hour.
- ★ Manufactured in Norway by Tellefsdal a.s. manufacturer of balewrappers for the world-market since 1986.

T.I. 4000

The Combi Rake of the future



Combination 10' Rake/ 14' Tedders

- ★ With all working functions: tedding and raking.
- ★ For the tedding operations the rake arms are locked and the machine is tilted forwards, thus obtaining uniform spreading of the material.
- ★ During the raking function the rake tines are controlled in a cam track allowing the rake tines to be tilted upwards. This ensures very gentle treatment of the material.
- ★ Wide flotation tires ensure stable operation.

- distributed by -

J.S. WOODHOUSE CO., INC.

572 Industrial Ave.
Lewisberry, Pa. 17339
(717) 938-5100