

# POLE BUILDINGS, TRUSSES

GARAGES - COMMERCIAL BUILDINGS - HORSE BARNs - STORAGE BUILDINGS

For FREE ESTIMATES Call

MUSSER & ASSOCIATES, INC.

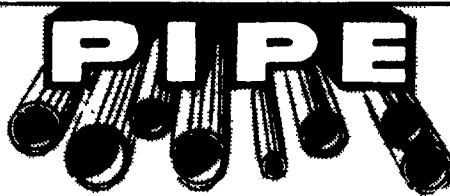


245 Fetterville Rd.  
East Earl, PA  
17519

1-800-331-1875 717-354-7561

H. SCHWARTZ & SONS, INC.

# STEEL PIPE



STALLS, PENS, FEEDERS, FENCING,  
BUILD YOUR OWN AND SAVE  
BEST PRICES ON NEW AND USED PIPE  
302-656-0276 or 215-331-4240

## CRAMER'S DISCOUNT ROOFING

Home of Perry County Recycling Corporation  
Regular Hours 9-5  
Other hours by appointment  
Newport, PA  
(717) 567-6782

All 3 tab roofing shingles from \$5-\$16 per sq.  
All architectural effect 25 year shingle \$25 per sq.  
Mineral surface full and 1/2 lap stone \$6 per roll  
Felt paper \$5 per roll  
Tar, nails and other roofing supplies available  
Look for our monthly special  
With This Coupon Get 1 Roll Of Felt FREE  
With Any Order of Shingles

## Centurydrain™

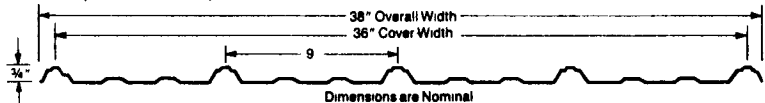
A country slicker with an in-town attitude.

Tough Centurydrain is a slick looking roofing and siding that'll do a job for you in rural applications, and one that you can use for in-town or suburban structures without apology.

Centurydrain is packed with quality features. 100% American-made high tensile steel, full 36" cover, an unbeatable

drain channel, and snug side laps. Your building stays tight, dry, and lasts through years of punishing wind and weather.

Centurydrain is an economical, thoroughly practical building material, a slick choice for rural, suburban, and commercial applications.



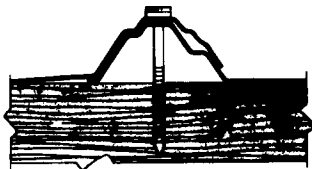
Dimensions are Nominal

### Centurydrain quick specs

- Full-hard 90,000 psi galvanized steel construction
- Popular 36" width (36" cover)
- Available in galvanized G-90 and in ten rich, 20-year warranted baked-on silicon polyester enamel colors.
- Three quarter inch major ribs on 9" centers along with prominent intermediate ribs to provide strength, snug fit and clean lines
- 29 gauge
- Also available 28 gauge, 2 oz galvanized Wheeling Seal of Quality—heavier, galvanized coated sheet for extra wear and long life. We're so confident of its durability that we offer this product a special 20-year limited warranty.

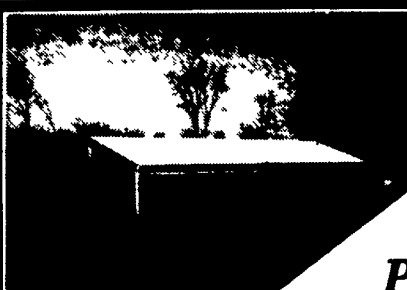
### Drain Channel

The exclusive leakproof drain channel adds strength at each joint; prevents capillary action; stays weather tight, interiors stay dry, snug.

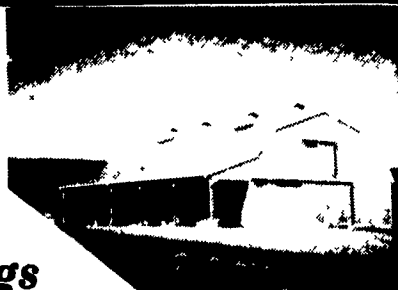


## A.B. MARTIN ROOFING

Roofing • Siding & Supplies  
150 Slate Road Ephrata, PA 17522  
(215)-445-6885 (717)-354-5076



We Specialize In Pole Buildings



Equipment Sheds



Horse Barns



Garages



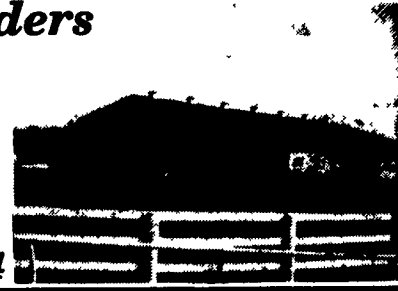
Arenas



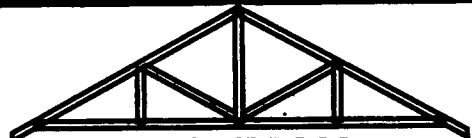
## Stoltzfus Builders

50 North View Rd.  
Lititz, PA 17543  
Free Estimates  
Call Anytime

717-664-3540  
1-800-551-7724



## ROOF TRUSSES



### ECKMAN

ENGINEERED PRODUCTS  
FAMILY OWNED SINCE 1935

- ✓ ROOF & FLOOR TRUSSES
- ✓ WOOD "I" JOISTS
- ✓ PARALLAM® BEAMS
- ✓ HANGERS

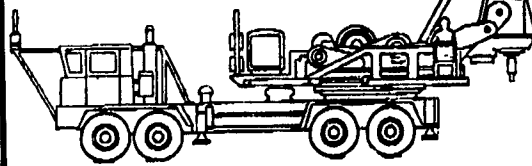
FREE ESTIMATES  
CALL (215) 377-2460  
TOLL FREE 800-296-4460  
FAX # 215-377-3929  
1280 MAIN RD - LEHIGHTON

## PRECISION DRILLING, INC.

273 KINGWOOD STOCKTON ROAD  
STOCKTON, NEW JERSEY 08559  
(908) 996-2200 • FAX (908) 996-7211

- Pole Barn Drilling
- Vertical Caisson Drilling
- Rock Drilling To 30" Diameter
- Truck or Track Mounted Equipment

Serving The Entire East Coast Since 1977



## MADE IN THE U.S.A.



FINK TRUSS Top Chord Overhang



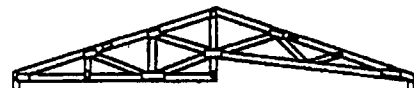
S66 - DOUBLE HOWE SCISSORS



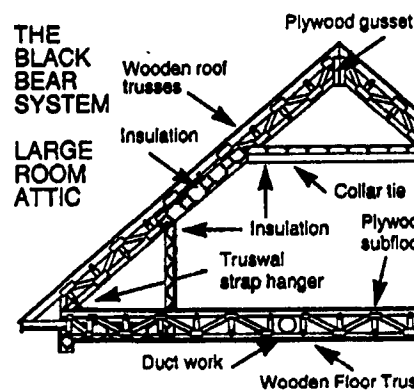
DOUBLE CANTILEVER Bottom Chord Overhang



VAULT Slope Slope



STUDIO WITH TWO BEARING POINTS



THE BLACK BEAR SYSTEM

LARGE ROOM ATTIC

## BLACK BEAR TRUSS CORP.

"OUR TRUSSES BEAR UP"

Contact your nearest dealer or call  
1-800-326-9689

- ✓ On-Site in Ten Days
- ✓ Crane Optional with Delivery
- ✓ Custom Built with MSR Lumber
- ✓ First Quality
- ✓ Reliable Schedule
- ✓ Competitive Prices
- ✓ Personal Service

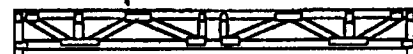


MACHINE STRESS RATED  
MSR  
2250 f 1.9E

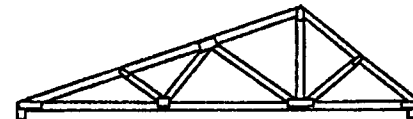
It Pays To Use MSR Lumber



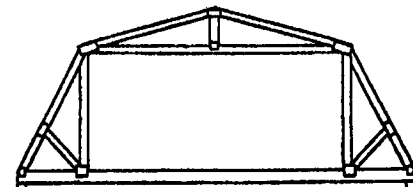
MONO



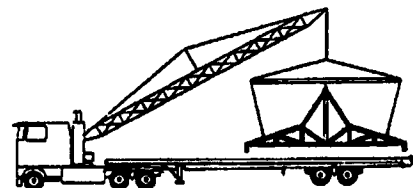
FLOOR TRUSSES



DUAL SLOPE (DOUBLE PITCH)



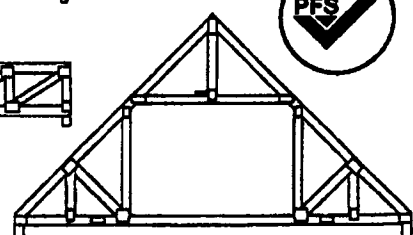
GAMBREL-IN-ATTIC



3 PIECE RAISED CENTER BAY



FLAT (PRATT)



ROOM-IN-ATTIC

